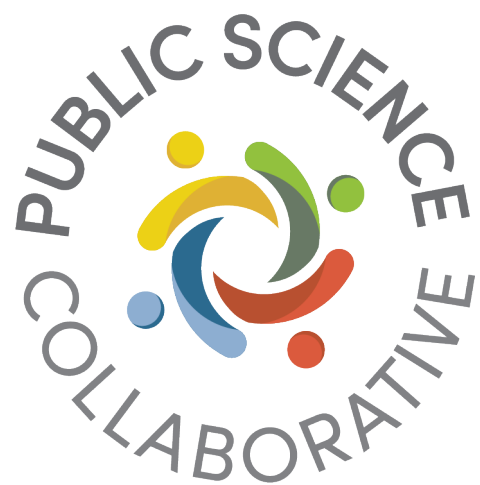




Recovery Readiness Assessment: Urbandale

September, 2024



Report provided to the Iowa Department of Health and Human Services

This project is supported by State Opioid Response funds through the Iowa Department of Health and Human Services, Bureau of Substance Use (IowaHHS) via a subaward from the Substance Abuse and Mental Health Services Administration (SAMHSA) of the U.S. Department of Health and Human Services (HHS). The contents are those of the author(s) and do not necessarily represent the official views of, nor an endorsement by, IowaHHS, SAMHSA/HHS, or the U.S. Government.

Table of contents

Overview	2
What is a Recovery-Ready Community?	2
What is Recovery?	2
What is Recovery Readiness?	3
What is a Recovery Community Organization?	3
Is Your Community Recovery Ready?	4
What Are the Resources in Your Community?	5
SAMHSA Dimensions of Recovery Resources	6
Social Determinants of Health Recovery Resources	9
Which Neighborhoods in Your Community Need Additional Health Resources and Support?	12
Substance Use Vulnerability	12
Social Determinants of Health	17
Appendix 1: Data Used in this Report	18
Appendix 2: Mutual Aid Meetings Near Urbandale	19
Appendix 3: Resources Near Urbandale	20

Overview

At the request of the Iowa Department of Health and Human Services, Bureau of Substance Use, the Public Science Collaborative (PSC) developed community-specific reports to support recovery efforts in Iowa. Recognizing the need to strengthen substance use recovery efforts throughout the state, we identified a large number of existing recovery-oriented resources in Urbandale, which we describe and map in the following pages. We developed additional maps to identify at-risk neighborhoods that will benefit from targeted health interventions and additional community resources. For additional questions or information about this report, the data tools described, or the Public Science Collaborative, please reach out to the principal investigators of this study, Dr. Shawn Dorius at sdorius@iastate.edu, or Dr. Cassandra Dorius at cdorius@iastate.edu.

In this report, we define recovery and recovery-ready communities and describe some of the recovery organizations that are emerging across Iowa. We then describe the recovery resources that we collected for your community, providing summary information about where your community has strength and where its resource base can look to grow in the future. We then show you how your community recovery services and resources align with the Substance Abuse and Mental Health Administration (SAMHSA) categories of recovery and where those resources are in your community. We also classified your community assets according to the Centers for Disease Control's social determinants of health framework, which can be useful as you think holistically about the health and well-being of people living there.

We have added two other sets of data and maps in this report that might be helpful in your recovery readiness planning. The first is a set of maps that identify substance use vulnerability for census tracts in your community. These can be helpful in knowing what kinds of substances people are most likely to be recovering from in your community, where to marshal resources and efforts to support at-risk neighborhoods, and where to plan events that meet people where they are. A second set of data and maps project neighborhood-level scores for a community health index that measures the social determinants of health problems. This index is designed to help practitioners and local community groups better understand neighborhoods that could use extra support, resources, and investments to improve the health and well-being of individuals and families.

What is a Recovery-Ready Community?

What is Recovery?

The Iowa Department of Health and Human Services and the Substance Abuse and Mental Health Services Administration (SAMHSA) use the following working definition:

"A process of change through which individuals improve their health and wellness, live a self-directed life, and strive to reach their full potential."

A second useful definition of recovery that has influenced the PSC approach to recovery community readiness was developed by Bill White:

"Recovery is the experience through which individuals, families, and communities impacted by severe alcohol and other drug (AOD) problems utilize internal and external resources to voluntarily resolve these problems, heal the wounds inflicted by AOD-related problems, actively manage their continued vulnerability to such problems, and develop a healthy, productive, and meaningful life."

Common to both definitions is that recovery is not a state or moment in life, but a process of moving toward better health in an actively managed and self-directed way. Recovery takes time and often involves not just the individual, but family and community. For this reason, the external resources noted in the White definition are what motivate our emphasis on recovery-ready communities. Resources outside of the individual, including housing, transportation, recreation, alcohol advertising, and schools, can lead to an early onset of recovery, longer recovery, and more stable recovery. One way these external resources contribute to recovery is through their impact on individual recovery capital. If we knew which resources were most helpful to long-run recovery, we could target towns and cities with large stocks of 'recovery resources' to grow Recovery Community Centers.

What is Recovery Readiness?

A recovery-ready community provides a comprehensive and supportive environment for individuals recovering from substance use disorders (SUD). This includes a continuum of care that spans prevention, treatment, and long-term recovery support. Key elements include accessible healthcare, peer support networks, educational and employment opportunities, harm reduction services, anti-stigma initiatives, and a sense of purpose. By fostering collaboration among community members, institutions, and policymakers, a recovery-ready community aims to create a nurturing ecosystem that promotes sustained recovery and overall well-being.

In Iowa, a recovery-ready community supports multiple recovery pathways, meets the needs of its recovery population, is integrated and coordinated across the formal and informal recovery-oriented system of care, and has a vibrant recovery culture.

What is a Recovery Community Organization?

Recovery organizations are groups or institutions that support individuals recovering from substance use disorders. While recovery organizations come in many forms, they share a common commitment to providing a range of services and resources to help people sustain their recovery, improve their health and well-being, and reintegrate into society. Most community-based recovery organizations will offer some form of peer support, either in the form of peer support specialists, recovery coaches, or mutual aid meetings, and a range of activities and services to grow community and connection among people in recovery. These organizations also offer a substance-free environment where all are welcome and people in recovery can receive guidance in daily living activities such as finding stable housing, a job, volunteer opportunities, recreation and social groups, and linkages to legal support, for example. A few of the most well-known recovery organizations include:

- **Recovery Houses:** These are safe, substance-free living environments that support people in recovery from substance use disorders. Most recovery houses provide a structured and supportive community where residents can focus on their recovery journey and live among other people in recovery. Oxford Houses are among the most well-known recovery residences.
- **Recovery Community Centers:** These centers are free, universal access physical spaces that offer a variety of services to support individuals in recovery. A typical recovery community center will host mutual aid meetings, maintain a network of local recovery coaches, engage in community advocacy for people in recovery, and coordinate life-skills training, social activities, employment assistance, housing assistance, and linkages to educational resources. They will also coordinate with first responders, parole officers, and emergency departments to support people with substance use disorders.
- **Recovery Cafes:** These community spaces bring people in recovery together, providing a space to socialize with other people in recovery, support one another, and engage in service. Cafés often provide free hot meals, beverages, and other basic needs to support people in recovery. They might also offer peer support and other activities in a welcoming, substance-free environment. The [Recovery Café Network](https://recoverycafenetwork.org/)¹ is a good starting place to learn more.
- **Recovery High Schools and Collegiate Recovery Programs:** These educational institutions provide a supportive environment for students in recovery, helping them achieve academic success while maintaining their sobriety. They do this in much the same way as community centers and cafes, by offering peer support, community, and recovery-focused activities. Iowa currently has three collegiate recovery programs.

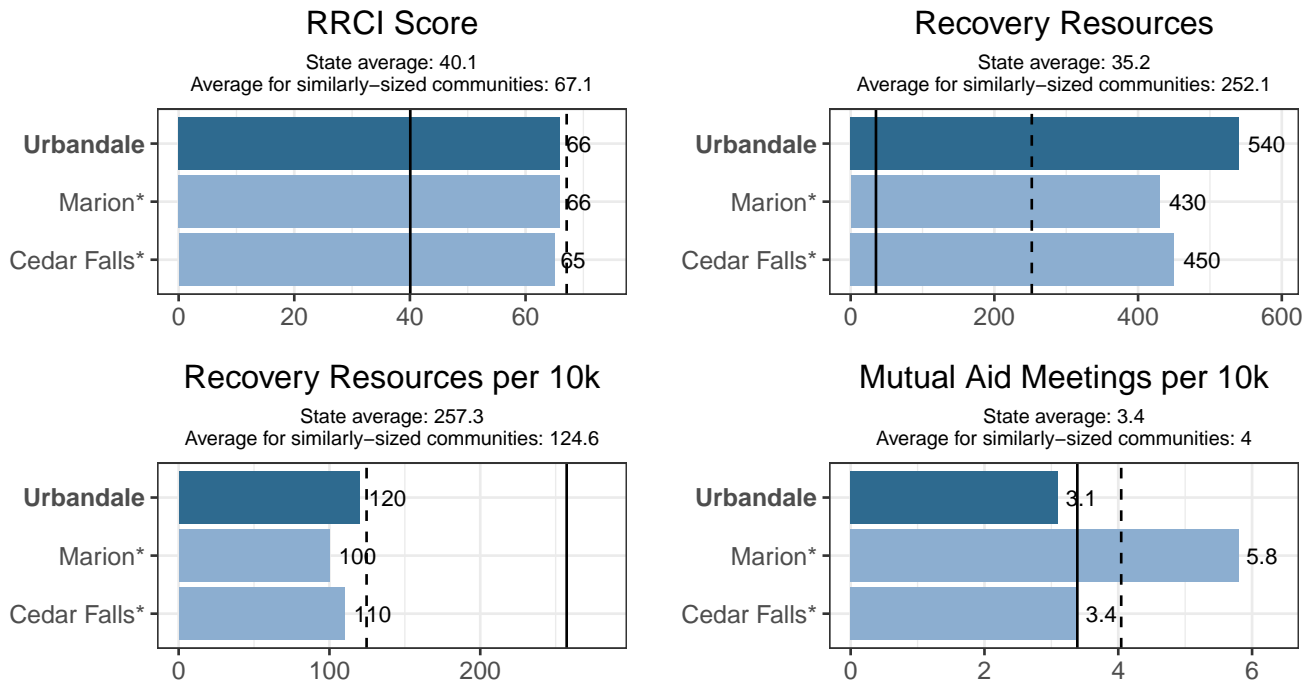
¹<https://recoverycafenetwork.org/>

Is Your Community Recovery Ready?

We consulted scientific literature on substance use recovery and engaged key stakeholders, including people in recovery and individuals from around the country and in Iowa who work directly with recoverees. From these efforts, we identify 24 categories of community-based recovery resources and services. Collecting all of that data for each of Iowa’s cities and towns yielded a total of nearly 40,000 community resources that support recovery. We mapped and analyzed these resources to identify a short list of ‘Recovery Ready’ communities across the state, culminating in the first-of-its-kind index: The Recovery Ready Community Index (RRCI).

The RRCI is comprised of three sub-indices: total number of resources, total resources per 10,000 population, and total mutual aid meetings per 10,000 population (the first two categories include all resources except mutual aid meetings). A community’s score is calculated by its percentile rank among all Iowa communities. For instance, the community with the most resources has a total resources percentile score of 99, while the one with the fewest has a score of 0. A community’s overall recovery readiness score is the average of its percentile ranking across each of the three sub-indices. The Public Science Collaborative designed and created a public-facing, [interactive dashboard](#)² that allows people to further explore the RRCI, compare recovery readiness scores, and evaluate communities.

Figure 1 below displays recovery resources in Urbandale compared to the two Iowa cities most similar in population, Marion and Cedar Falls, as well as the state average and average for cities in a similar population group (10,000 - 49,999).



* The Iowa cities most comparable to Urbandale by population are Marion and Cedar Falls.
 ** The solid vertical line represents the average for all 944 communities in Iowa and the dashed vertical line represents the average for Iowa communities with populations of 10,000 – 49,999 people.

Figure 1: Recovery Resources in Urbandale

Urbandale ranks 16th of 31 on the RRCI in its size category (10,000 - 49,999). In the same population group, Urbandale ranks 1st in total resources, 17th in resources per 10,000 people, and 17th in mutual aid meetings per 10,000 people.

In addition to the RRCI, a community might also consider resource diversity. That is, whether Urbandale has a wide range of types of resources to support multiple pathways to recovery. On this measure, Urbandale has 10 types of non-meeting resources, compared to the average of 13.7 for cities with a population of 10,000 - 49,999.

²<https://publicsciencecollaborative.shinyapps.io/RRCI/>

What Are the Resources in Your Community?

Overall, Urbandale has 18 mutual aid meetings and 244 non-meeting recovery resources non-meeting recovery resources. The tables below include data about the specific kinds of mutual aid meetings and other recovery resources available in your community. Appendices 2 and 3 have a full list of these resources. Following the tables, we have prepared maps that break up the data into categories of similar types of resources and show where resources are located in Urbandale. These maps can be used to help identify areas that already have plentiful recovery resources and those that have limited resources and may need additional support.

Table 1: Types of Mutual Aid Meetings in Urbandale

Meeting Type	Total Meeting Locations	Total Meetings
Alcoholics Anonymous	10	14
Al-Anon	2	2
Narcotics Anonymous	2	2

Table 2: Types of Recovery Resources in Urbandale

Resource Type	Total Resources
Playground	47
Public Park	40
Childcare Provider	38
Baseball/Softball Diamond	26
Place of Worship	25
Tennis Court	18
Outdoor Basketball Court	15
School	11
Soccer Field	11
Other Sports Facilities	3
SUD or Gambling Treatment Center	3
Drug Drop-off Site	2
Football Field	2
MAT Site	2
Library	1

SAMHSA Dimensions of Recovery Resources

As defined by SAMHSA, recovery is "A process of change through which individuals improve their health and wellness, live self-directed lives, and strive to reach their full potential." Because recovery is holistic and can look different for everybody, the SAMHSA Dimensions of Recovery listed below help identify the different parts of life and the different resources that are useful in supporting recovery. The following maps identify resources in Urbandale that fit into each of those dimensions of recovery.

The SAMHSA Dimensions of Recovery include ([Click here for more information³](#)):

- **Community** (Peer Support–Specialists and Coaches, Recovery Organizations–Community and Collegiate, Mutual Aid Meetings, Libraries, Parks and Playgrounds, Lakes and Beaches, Trails, Sports Facilities)
- **Health** (Access Centers, Drug Drop Off Sites, Hospitals and Clinics, MAT Sites, Mental & Behavioral Health Centers, SUD and Gambling Treatment Centers, YMCA Gyms)
- **Home** (Childcare Providers, Recovery Housing, Section Eight Housing, Shelters, Intimate Partner Violence Programs)
- **Purpose** (Workforce Development Offices, Colleges and Universities, K-12 Schools, Places of Worship)

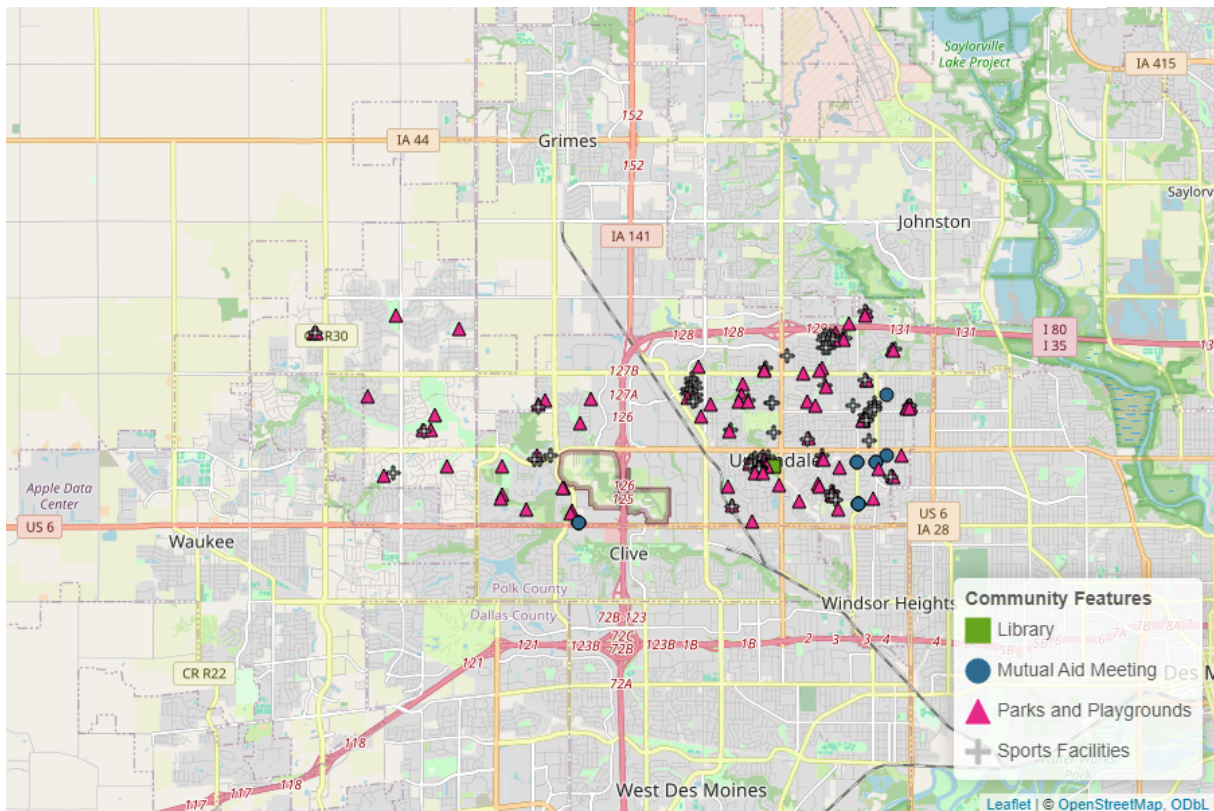


Figure 2: Community Resources in Urbandale

³<https://www.samhsa.gov/find-help/recovery>

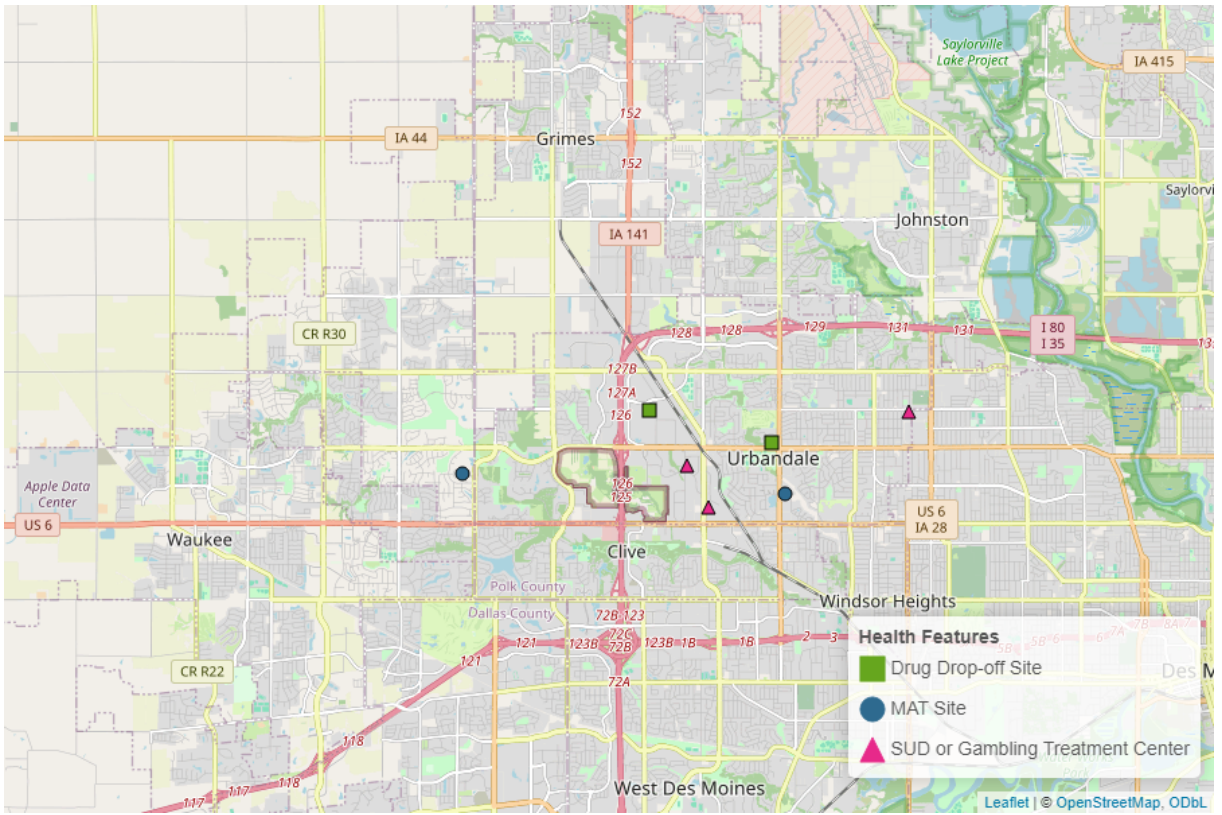


Figure 3: Health Resources in Urbandale

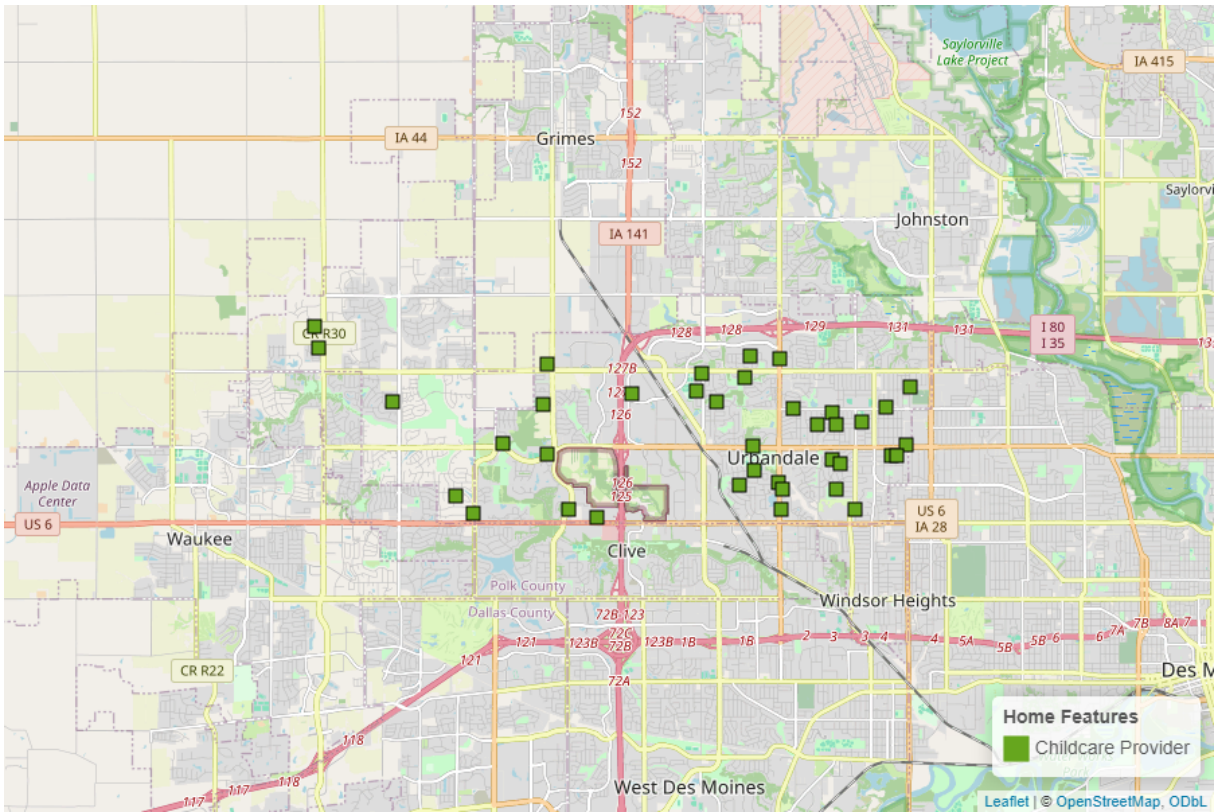


Figure 4: Home Resources in Urbandale

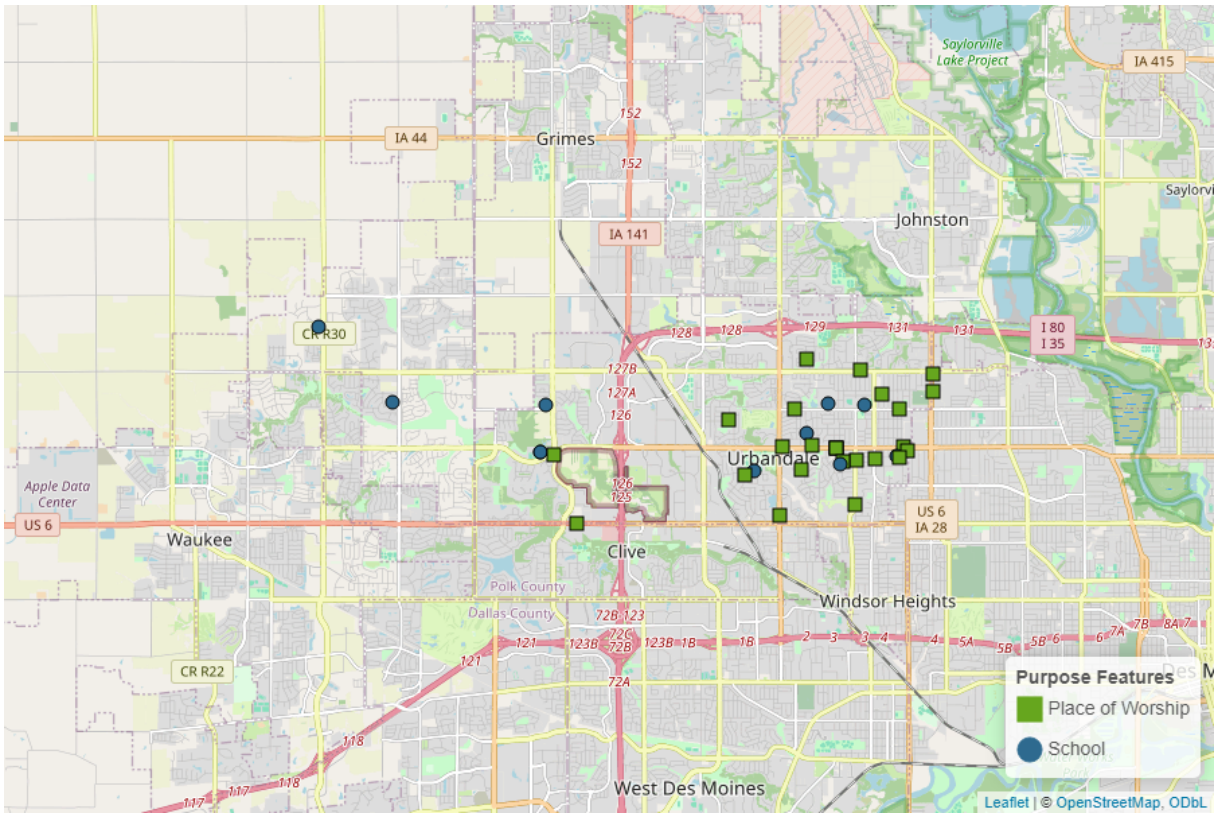


Figure 5: Purpose Resources in Urbandale

Social Determinants of Health Recovery Resources

The Social Determinants of Health is an established framework for thinking about the conditions of a person's life that contribute to their overall well-being. For example, a family that living in an area with limited resources supporting families and children (such as childcare providers and parks or playgrounds) may experience other struggles as a result, like increased transportation costs that place stressors on a family's finances. These maps can also be used in conjunction with the population data in the next section to help identify vulnerable populations and neighborhoods. Neighborhoods with health and substance use vulnerabilities may need greater access to specific supporting resources.

The SDOH categories include ([Click here for more information⁴](#)):

- **Health Care Access and Quality** (Access Centers, Drug Drop Off Sites, Hospitals and Clinics, MAT Sites, Mental & Behavioral Health Centers, SUD and Gambling Treatment Centers)
- **Social and Community Context** (Peer Support–Specialists and Coaches, Recovery Organizations–Community and Collegiate, Intimate Partner Violence Programs, Mutual Aid Meetings, Places of Worship)
- **Neighborhood and Built Environment** (Libraries, Parks and Playgrounds, YMCA Gyms, Lakes and Beaches, Trails, Sports Facilities)
- **Education Access and Quality** (Colleges and Universities, K-12 Schools)
- **Economic Stability** (Childcare Providers, Recovery Housing, Section Eight Housing, Shelters, Workforce Development Offices)

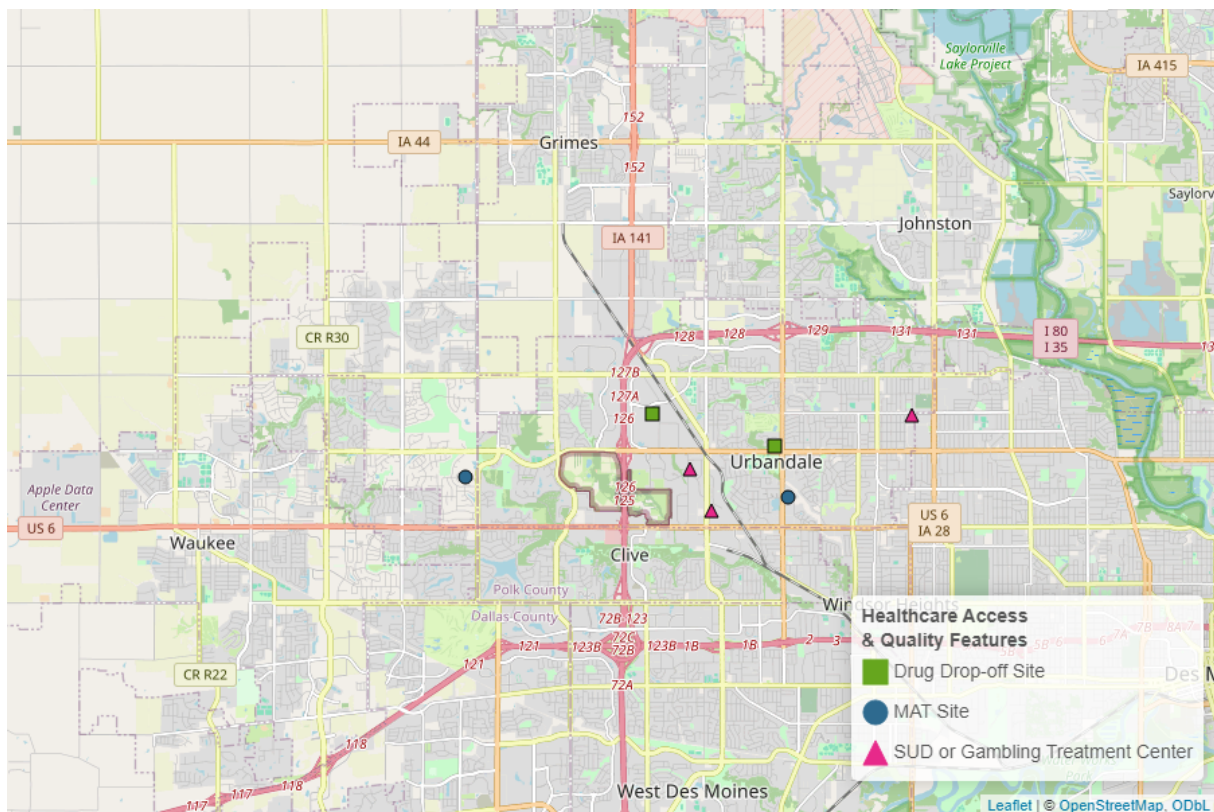


Figure 6: Health Care Access and Quality Resources in Urbandale

⁴<https://health.gov/healthypeople/priority-areas/social-determinants-health>

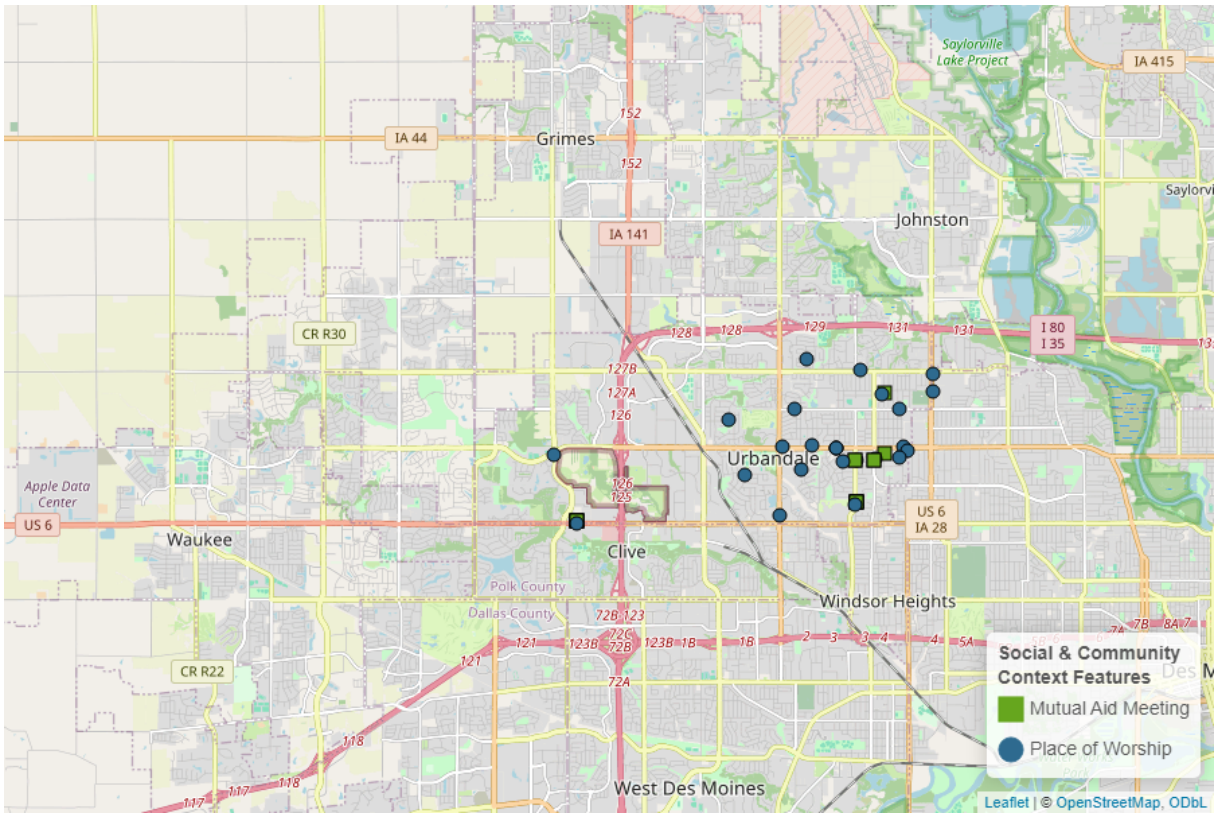


Figure 7: Social and Community Context Resources in Urbandale

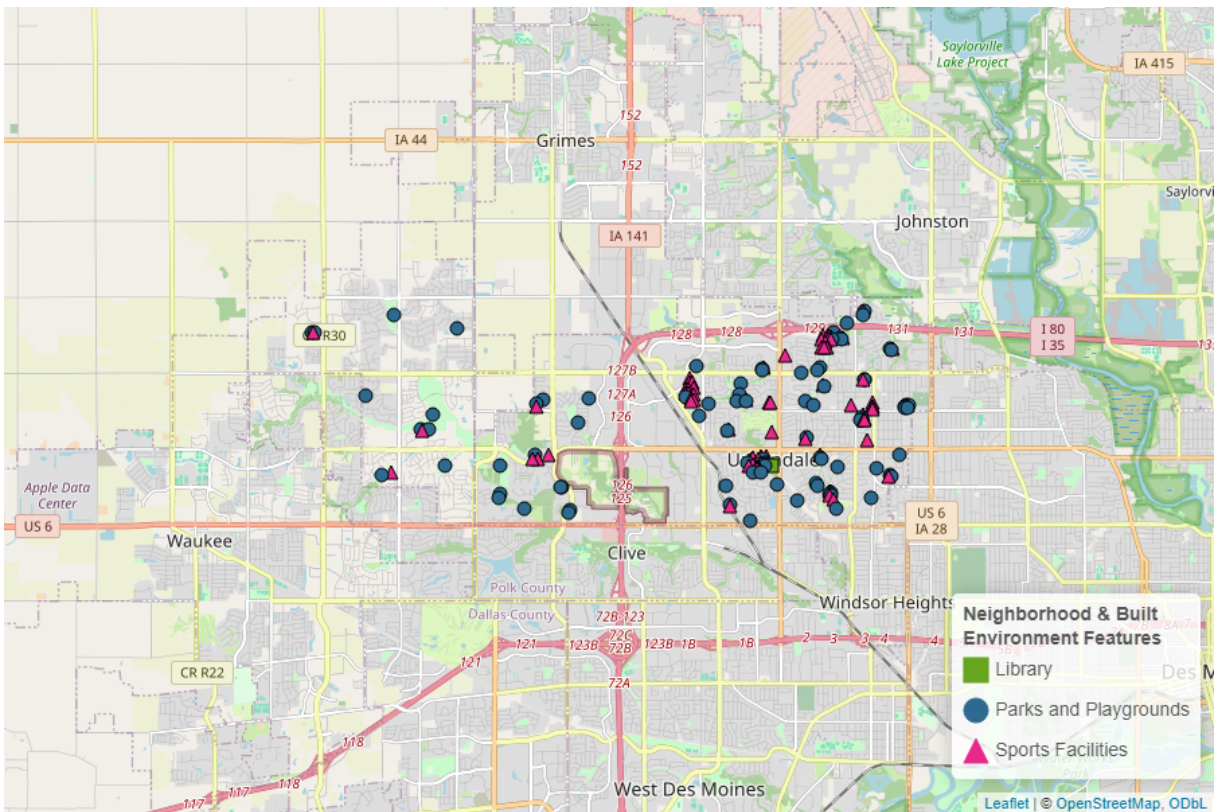


Figure 8: Neighborhood and Built Environment Resources in Urbandale

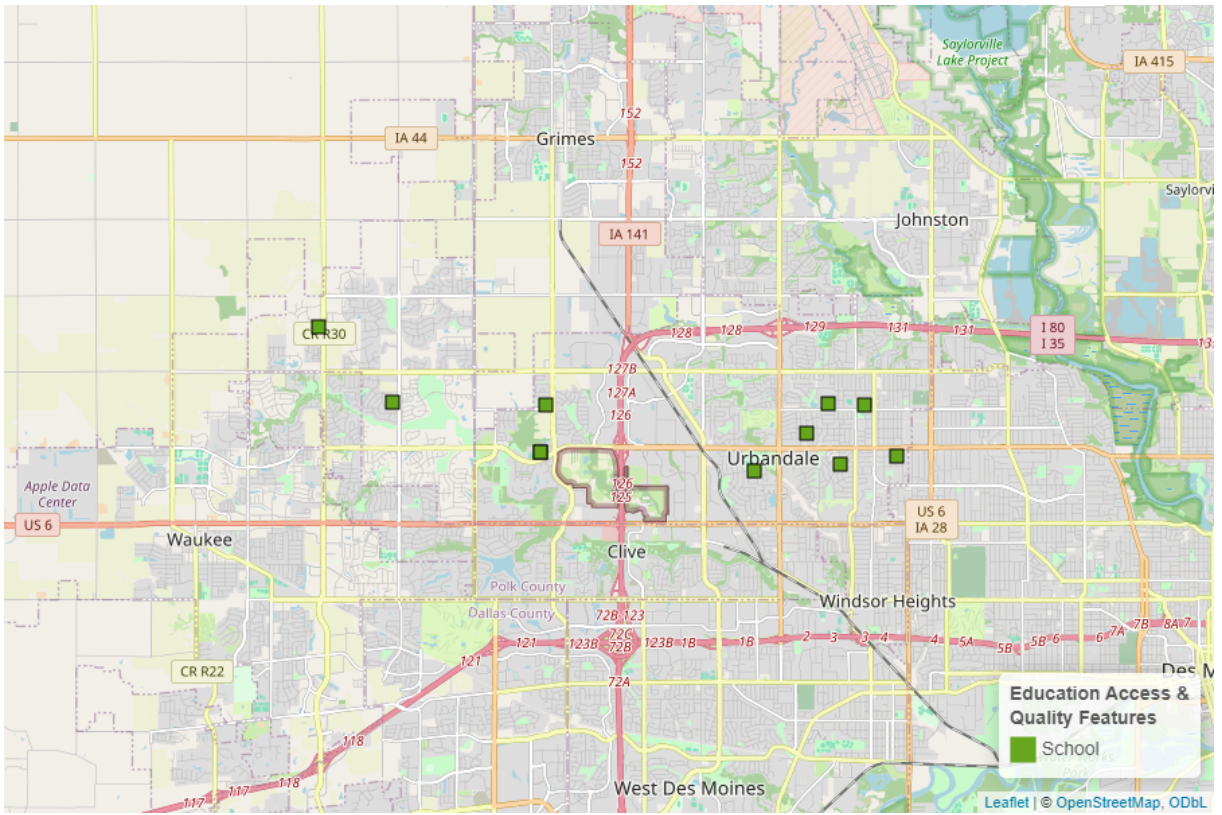


Figure 9: Education Access and Quality Resources in Urbandale

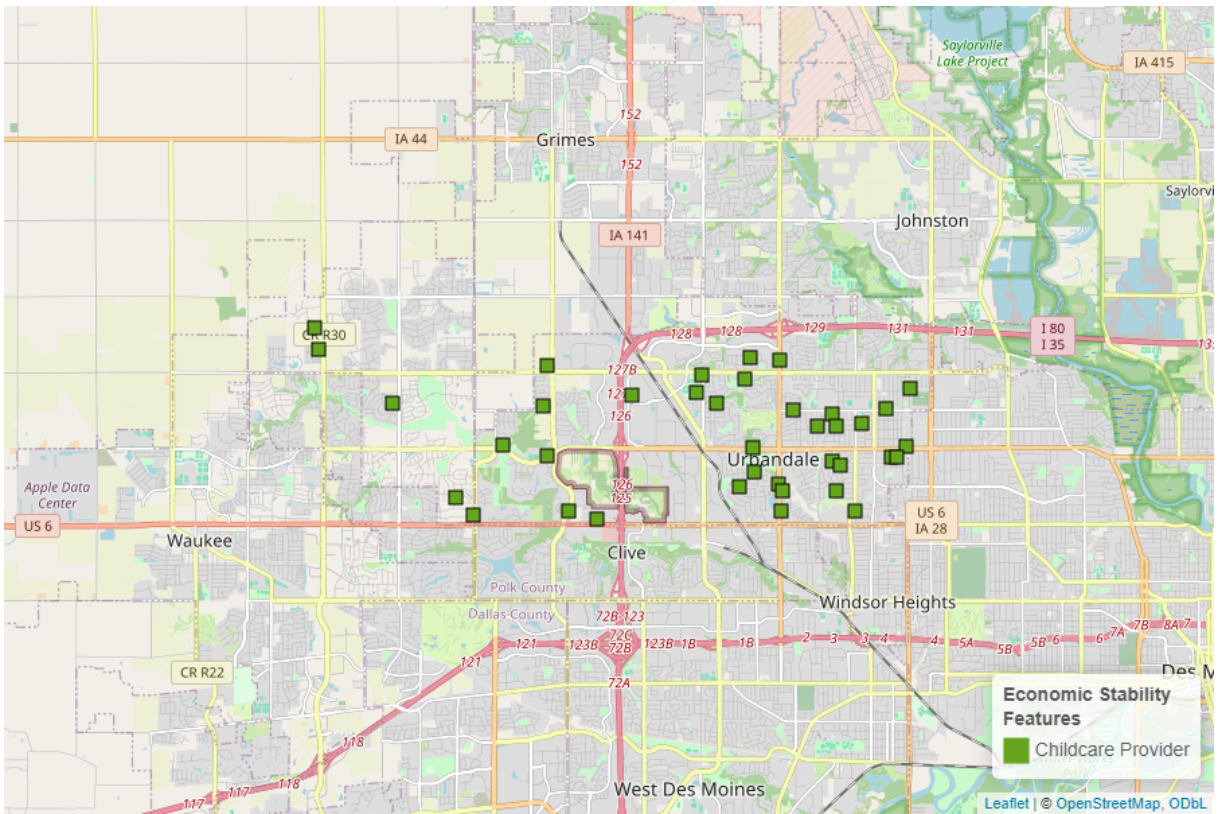


Figure 10: Economic Stability Resources in Urbandale

Which Neighborhoods in Your Community Need Additional Health Resources and Support?

Substance Use Vulnerability

The Public Science Collaborative has developed data resources to help community organizations, local governments, and public health practitioners resources more effectively target substance use prevention, treatment, and recovery interventions to the places in greatest need. Geographic ‘hot spots’ identify places where local residents are at exceptionally high risk for substance use disorder. We estimated statistical models using administrative data from the Treatment Episode Admissions Dataset (TEDS-A) and the National Survey of Drug Use and Health (NSDUH) to measure significant relationships between substances of misuse and socio-demographic characteristics known to affect health equity and substance use vulnerability. These maps use Census Bureau estimates of these same neighborhood characteristics, by census tract, to create indexes for each substance. Once mapped, these data help us to identify places with especially high concentrations of at-risk characteristics that need targeted resources to reduce health inequities. You can explore the maps interactively and learn more about the underlying models on PSC’s [dashboard for substance use vulnerability](#).⁵

Identification of towns and neighborhoods with exceptionally high (or low) risk of harmful use of a specific substance can guide public health outreach efforts and enable more targeted, substance-specific interventions based on known neighborhood risk factors. To assist in this work, the following pages include substance use vulnerability maps for overall substance use, opioids, methamphetamine, heroin, alcohol, cannabis, cocaine, and benzodiazepines.

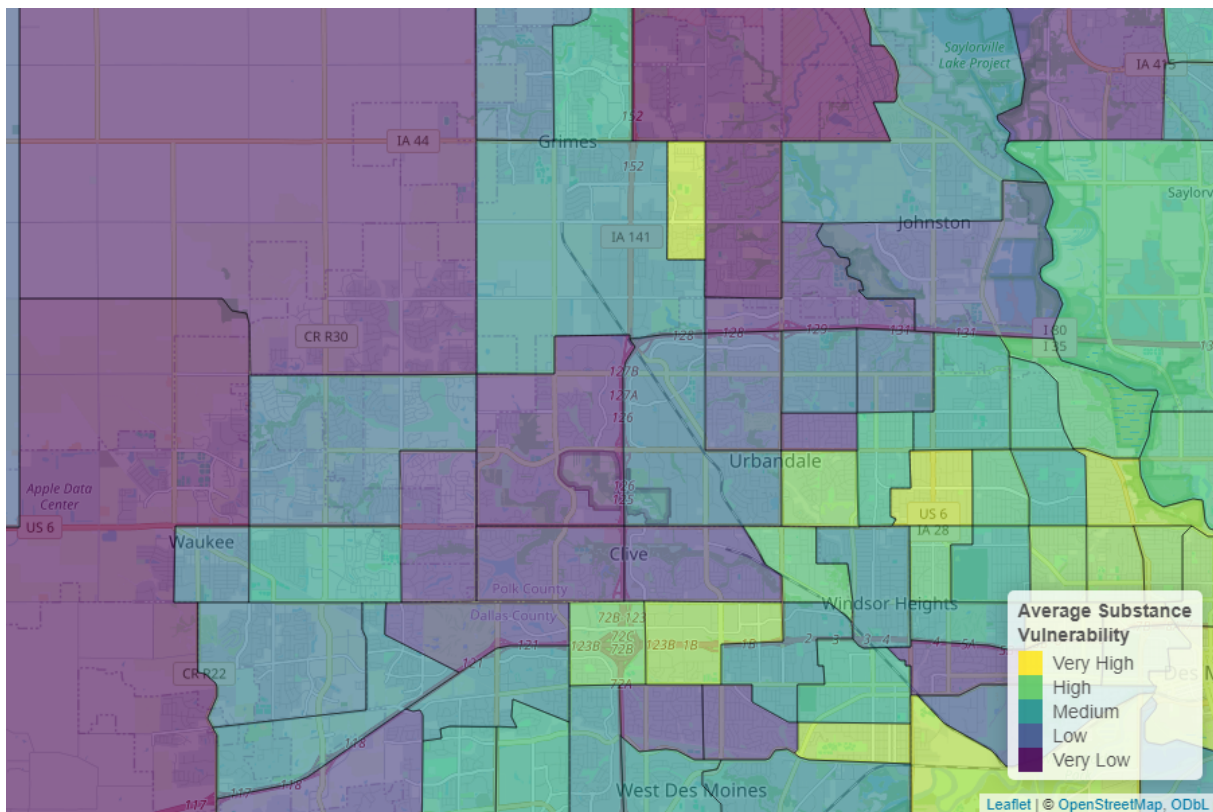


Figure 11: Overall Substance Use Vulnerability in Urbandale

Overall substance use vulnerability varies by neighborhood in Urbandale, but is generally about equal to other communities in Iowa. Due to neighborhood vulnerability, specific neighborhoods may benefit from a targeted approach rather than community-wide efforts. Community-wide vulnerability was highest for alcohol, and a breakdown for each substance is shown in the figures below.

⁵https://publicsciencecollaborative.shinyapps.io/substance_use_vulnerability/

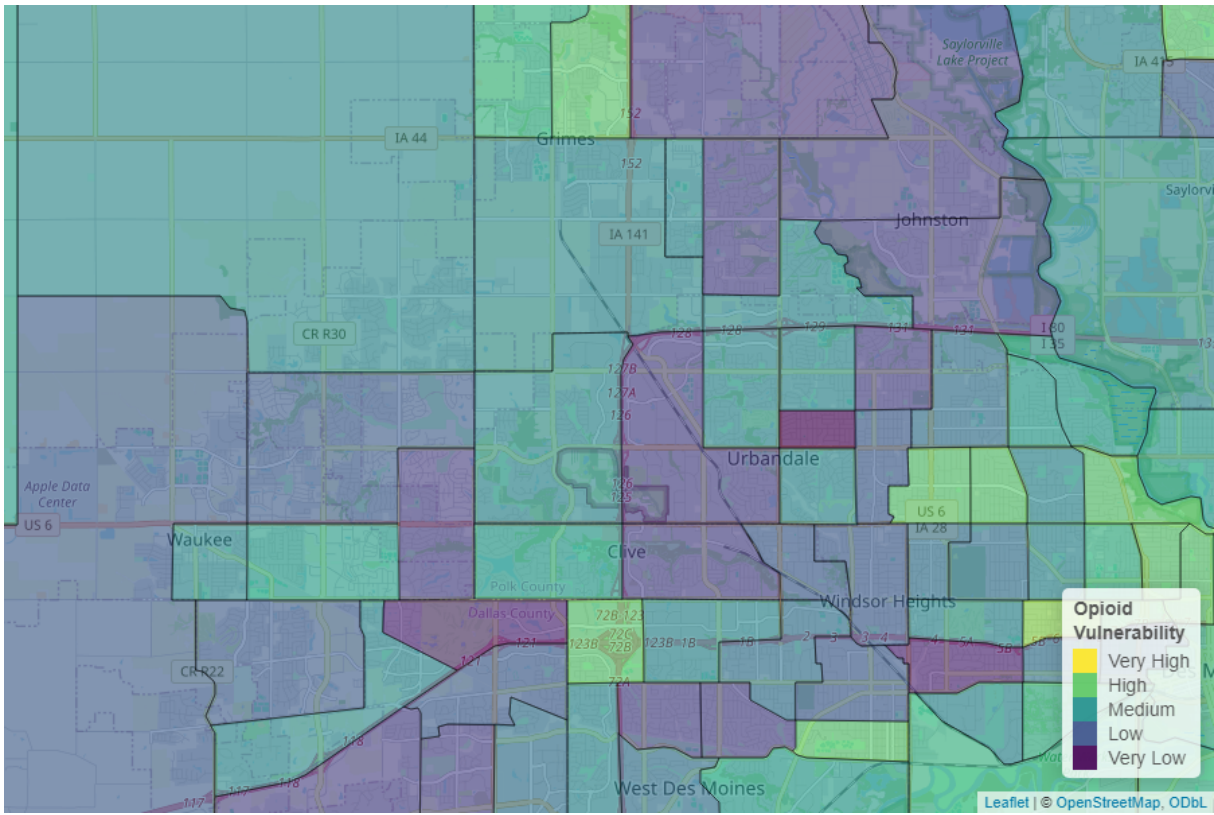


Figure 12: Opioid Vulnerability in Urbandale

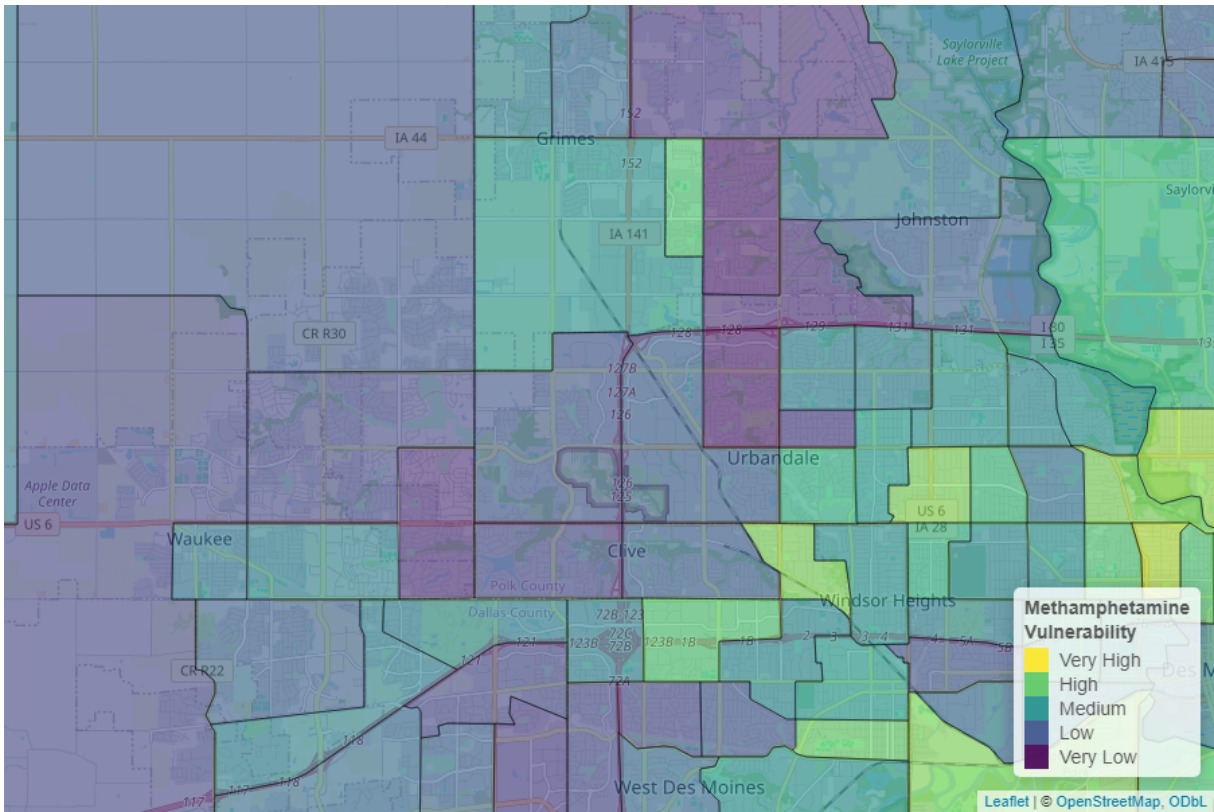


Figure 13: Methamphetamine Vulnerability in Urbandale

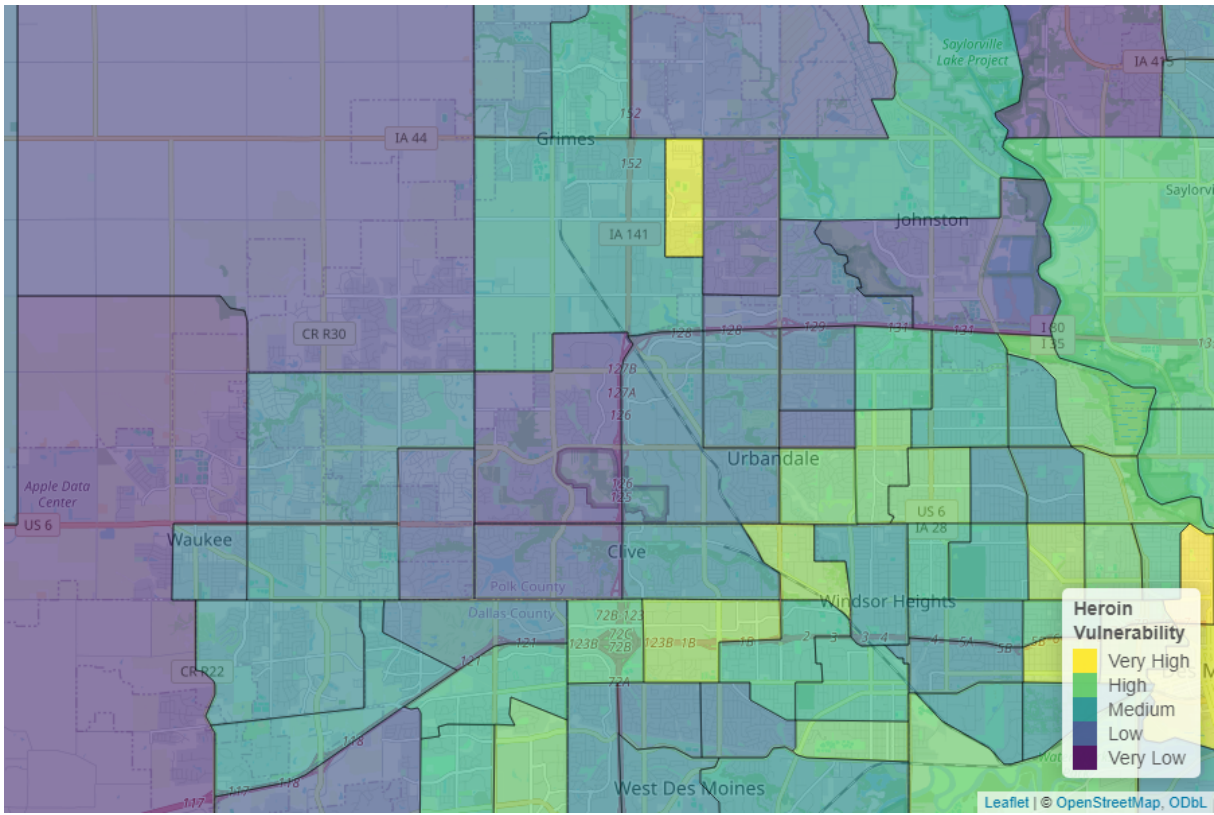


Figure 14: Heroin Vulnerability in Urbandale

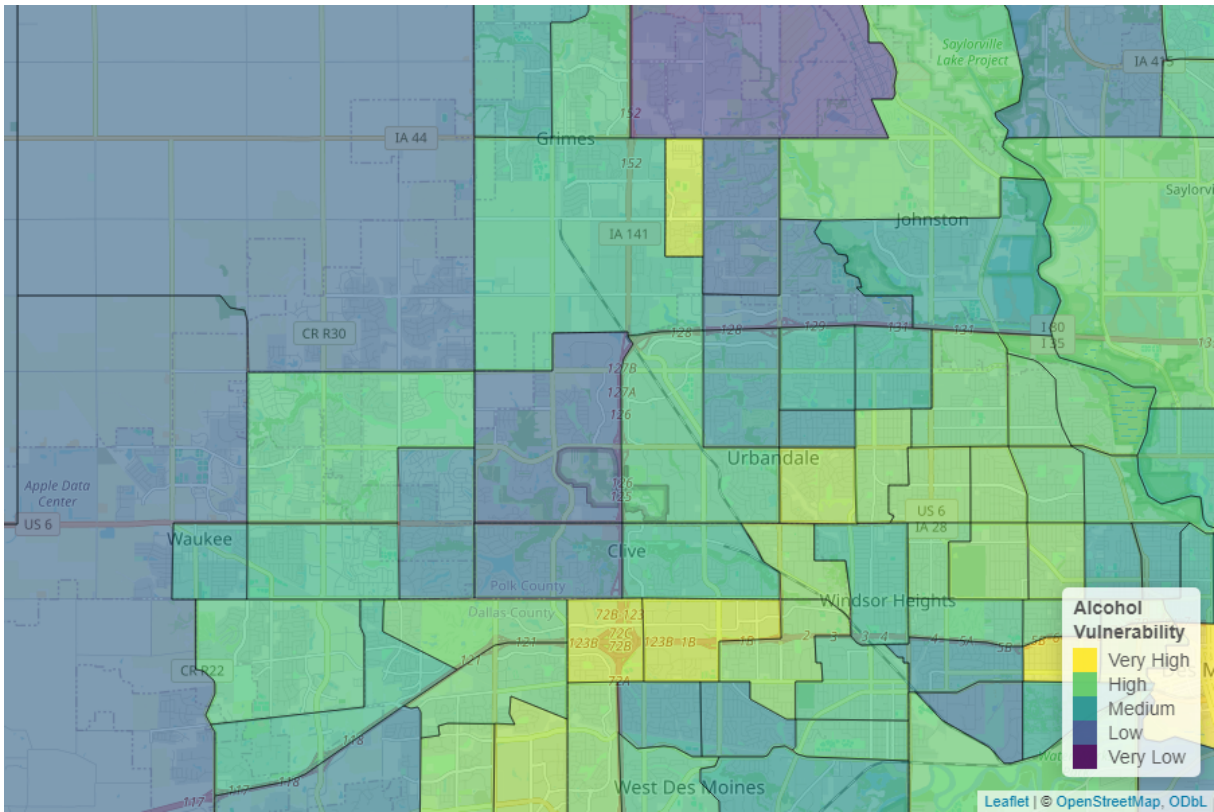


Figure 15: Alcohol Vulnerability in Urbandale

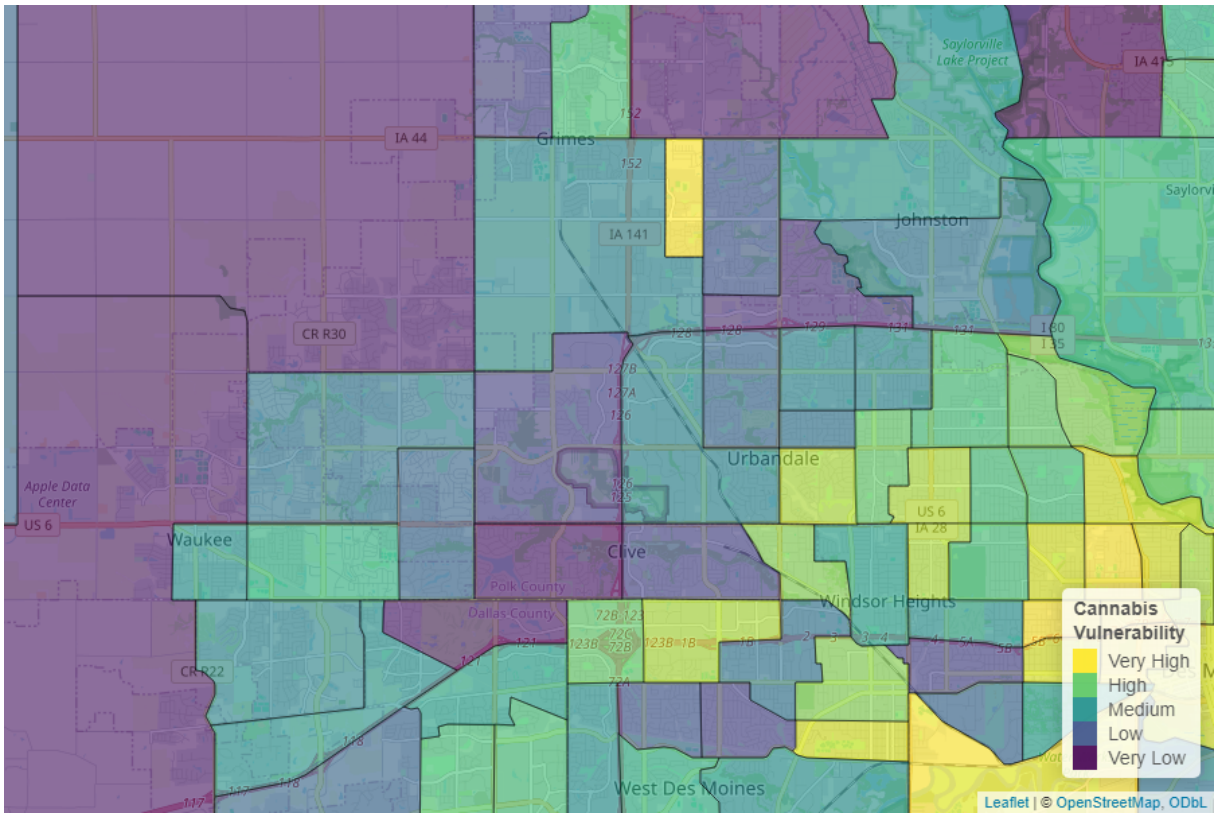


Figure 16: Cannabis Vulnerability in Urbandale

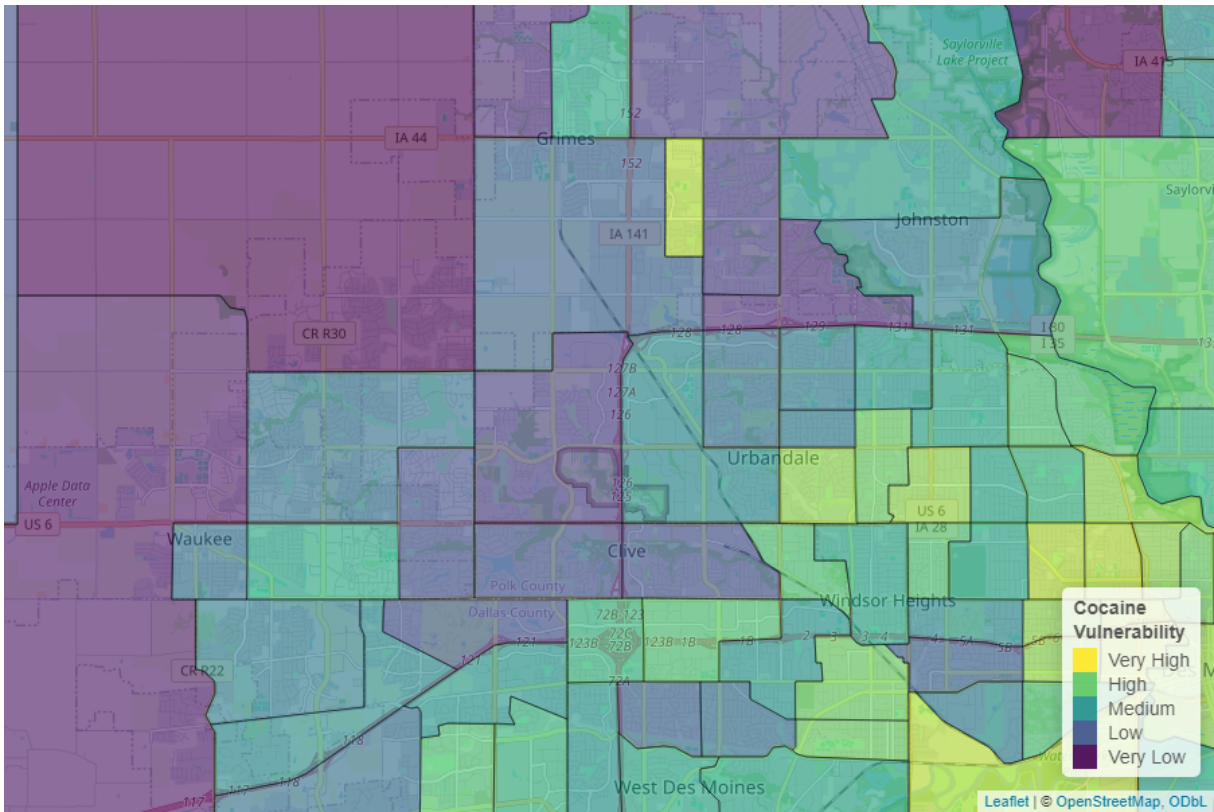


Figure 17: Cocaine Vulnerability in Urbandale

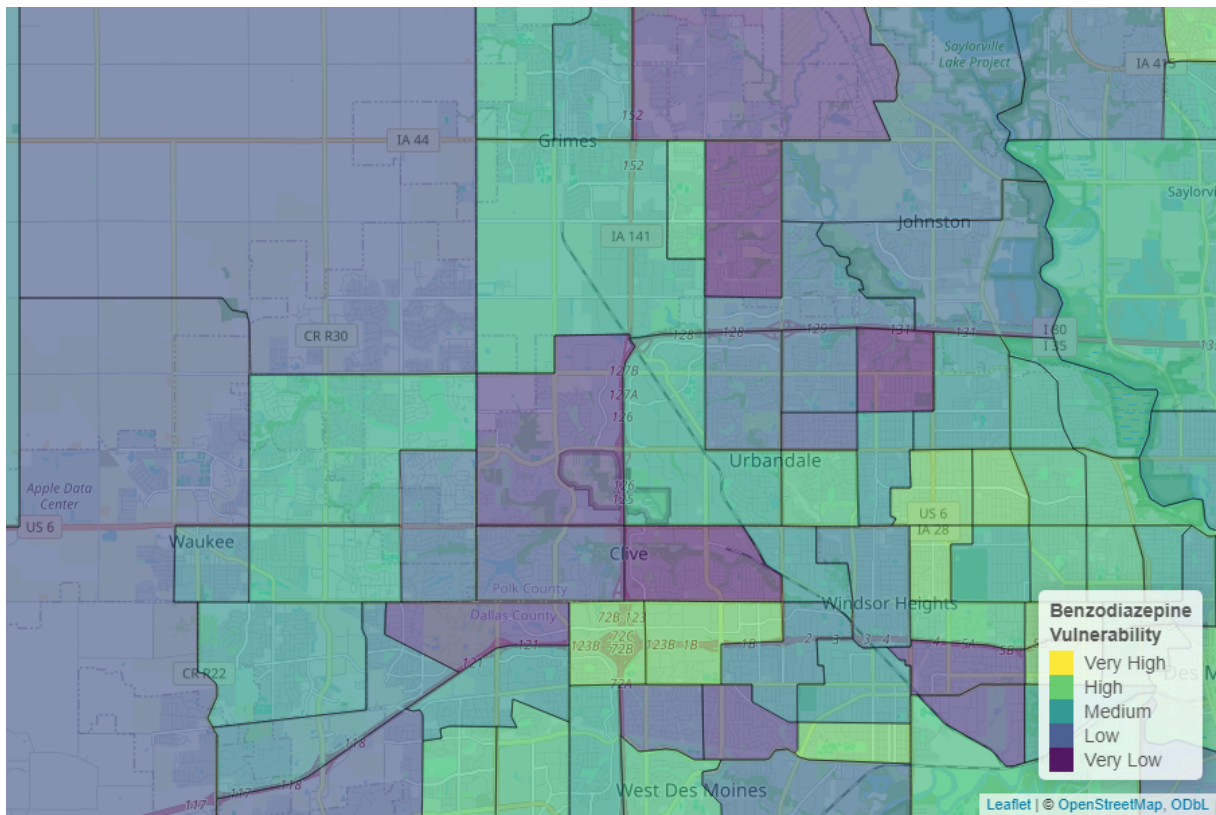


Figure 18: Benzodiazepine Vulnerability in Urbandale

Social Determinants of Health

In addition to the neighborhood vulnerability maps above, the Public Science Collaborative created a neighborhood map to understand health disparities in Urbandale that draws on well-established social determinants of health. By social determinants, we refer to social and environmental risks that can affect someone's overall health and well-being. For example, in places with high average levels of education and low unemployment rates, residents tend also to have better overall health (e.g. longer life span and more healthy years of living). In places where average incomes are low and the rates of single parenting are high, people often have worse health, including higher death rates due to overdose and fewer healthy days. Knowing something about where the social determinants of health support well-being and where their scarcity decreases well-being can help local community organizations and governments to target better investments to reduce health disparities between neighborhoods. You can interactively explore social determinants of health across the state and look at individual components on [PSC's SDOH Dashboard](#).⁶

Our index of social determinants of health looks at overall health vulnerability, education, health insurance coverage, English proficiency, unemployment, and poverty. According to the social determinants we considered, lack of English is the biggest risk factor for poor health in Urbandale. Overall, health risks in Urbandale are about equal to the average for communities in Iowa.

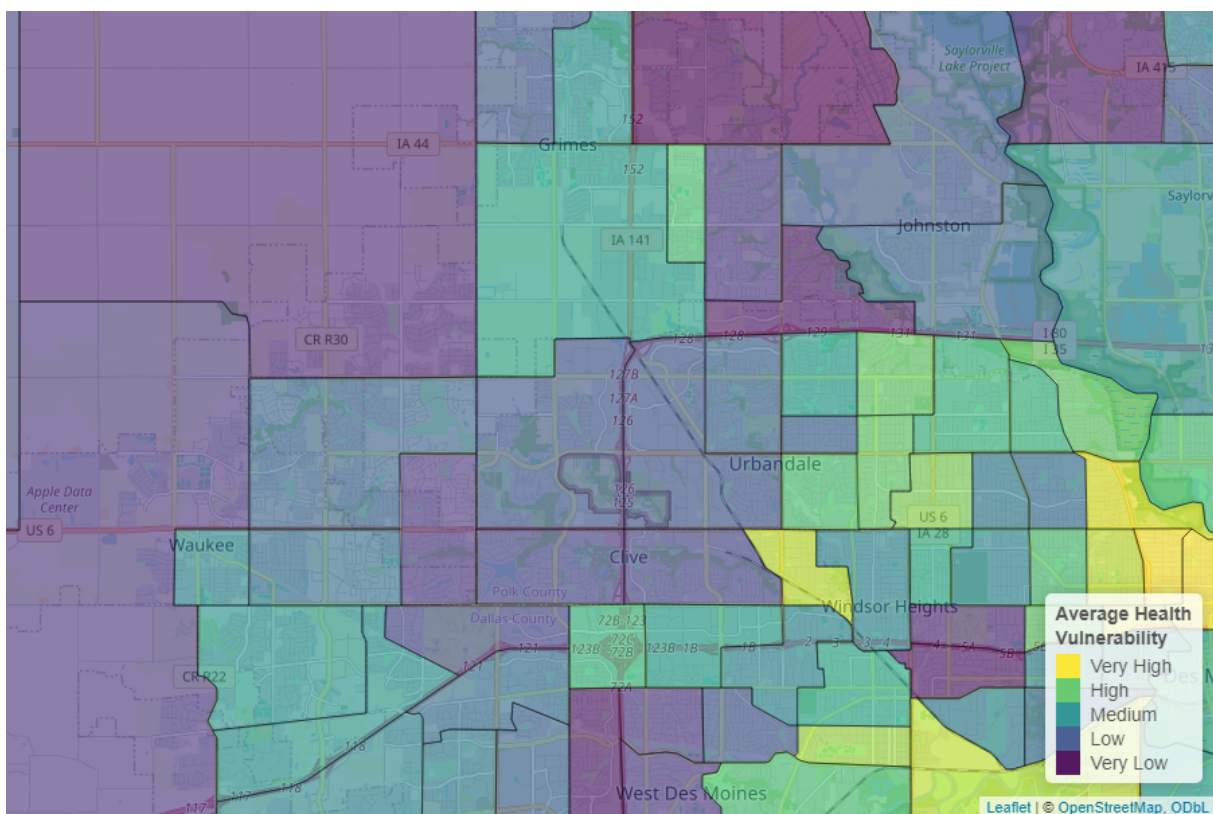


Figure 19: Overall Health Vulnerability in Urbandale

⁶<https://publicsciencecollaborative.shinyapps.io/sdoh/>

Appendix 1: Data Used in this Report

The data used in this report is a variety of recovery, community, and well-being resources that can be useful to individuals in recovery. To collect this data, we used various public resources, including government agencies and recovery websites. The data sources can be found in the table below. Our collection of data may not cover every single resource in Iowa, but it represents the primarily publicly available data found through our research and following the advice of substance use experts and researchers. This data was acquired through several means, including simple downloads, manual data entry, computer reading of PDF files, scraping websites, and utilization of APIs. There are also several resource finder tools to help find a specific resource in an area, including the [Recovery Resource Finder](#),⁷ [Well-Being Resource Finder](#),⁸ and [Physical Activity Resource Finder](#).⁹

Table 3: Recovery Data Sources

Resource Type	Source
Beach	Iowa DNR
Library	Institute of Museum and Library Services
Playground	OpenStreetMap
Public Park	OpenStreetMap
Trail	OpenStreetMap
Outdoor Basketball Court	OpenStreetMap
Football Field	OpenStreetMap
Soccer Field	OpenStreetMap
Baseball/Softball Diamond	OpenStreetMap
Tennis Court	OpenStreetMap
Pickleball Court	OpenStreetMap
Outdoor Volleyball Court	OpenStreetMap
Other Sports Facilities	OpenStreetMap
Family Support Specialist	Wellpoint Peer Support Inventory
Mutual Aid Meeting	Various Websites
Peer Support Provider	Wellpoint Peer Support Inventory
Recovery Organizations (Community and Collegiate)	Manual Addition
SUD Recovery Coach	Wellpoint Peer Support Inventory
Lake	Iowa DNR
Access Center	Manual Addition
Drug Drop-off Site	Iowa Geodata
Hospital	Iowa Medicaid Provider Search
MAT Site	SAMHSA
Mental & Behavioral Health Center	Iowa DHHS
Rural Health Clinic	Iowa Association of Rural Health Clinics
SUD or Gambling Treatment Center	Iowa DHHS
VA Hospital or Clinic	U.S. Department of Veterans Affairs
YMCA	Heartland YMCA Alliance
Childcare Provider	Iowa DHHS
Recovery Housing	Iowa DHHS
Section 8 Housing	U.S. Department of Housing and Urban Development
Shelter	Homeless Shelters Directory
Intimate Partner Violence Program	Iowa Coalition Against Domestic Violence
Workforce Development Office	Iowa Workforce Development
College or University	Wikipedia
School	Iowa Department of Education
Place of Worship	ExpertGPS.com
State Park	Iowa DNR

⁷<http://public-science.org/recoveryresources>

⁸<http://public-science.org/communityresources>

⁹<http://public-science.org/physicalactivity>

Appendix 2: Mutual Aid Meetings Near Urbandale

Table 4: Mutual Aid Meetings in Urbandale

Meeting Type	Group	Address	Weekly Meeting #
Alcoholics Anonymous	Grupo Un Nuevo Despertar	3650 68th St, Urbandale, IA 50322, USA	5
Alcoholics Anonymous	Keep It Simply Spiritual-	2700 72nd St, Urbandale, IA 50322, USA	1
Alcoholics Anonymous	Monday Big Book	2700 72nd St, Urbandale, IA 50322, USA	1
Alcoholics Anonymous	Monday Big Book Study Group	2700 72nd St, Urbandale, IA 50322, USA	1
Alcoholics Anonymous	Step Study Group	12321 Hickman Rd, Urbandale, IA 50323, USA	1
Alcoholics Anonymous	Subtle Foes Group	3510 72nd St, Urbandale, IA 50322, USA	1
Alcoholics Anonymous	Subtle Foes- No MEETING 7/4/24-will resume 7/11	3510 72nd St, Urbandale, IA 50322, USA	1
Alcoholics Anonymous	Urbandale 70th St Group	3530 70th St, Urbandale, IA 50322, USA	1
Alcoholics Anonymous	Urbandale Group	3530 70th St, Urbandale, IA 50322, USA	1
Alcoholics Anonymous	Walnut Hills Step Study	12321 Hickman Rd, Urbandale, IA 50323, USA	1
Al-Anon	Cause For Hope AFG	6800 Townsend Ave, Urbandale, IA, 50322, USA	1
Al-Anon	K I S S AFG	2700 72nd St, Urbandale, IA, 50322, USA	1
Narcotics Anonymous	Recovery at Work (R.A.W.)	12321 Hickman Rd, Urbandale, IA 50323, USA	1
Narcotics Anonymous	Westside Recovery	12321 Hickman Rd, Urbandale, IA 50323, USA	1

Appendix 3: Resources Near Urbandale

Table 5: Recovery Resources in Urbandale

Resource Type	Name	Address
Baseball/Softball Diamond	Gary Page Field	Urbandale, Polk County, Iowa, 50322, United States
Baseball/Softball Diamond	1 Baseball/Softball Diamond	Urbandale, Dallas County, Iowa, 50325, United States
Baseball/Softball Diamond	22 Baseball/Softball Diamonds	Urbandale, Polk County, Iowa, 50322, United States
Baseball/Softball Diamond	2 Baseball/Softball Diamonds	Urbandale, Polk County, Iowa, 50323, United States
Outdoor Basketball Court	1 Outdoor Basketball Court	Urbandale, Dallas County, Iowa, 50263, United States
Outdoor Basketball Court	1 Outdoor Basketball Court	Urbandale, Dallas County, Iowa, 50323, United States
Outdoor Basketball Court	1 Outdoor Basketball Court	Urbandale, Polk County, Iowa, 50111, United States
Outdoor Basketball Court	12 Outdoor Basketball Courts	Urbandale, Polk County, Iowa, 50322, United States
Childcare Provider	Annie Weah	4117 77th ST CIR, Urbandale, IA, 50322
Childcare Provider	Beuline Bucumi	2727 145th ST, Urbandale, IA, 50323
Childcare Provider	Beyond the Bell - Radiant Elementary	5050 170th ST, Urbandale, IA, 50323
Childcare Provider	Beyond the Bell-Walnut Hills Elementary	4240 NW 156th ST, Urbandale, IA, 50323
Childcare Provider	Brookelynn Roberts	4727 92nd CT, Urbandale, IA, 50322
Childcare Provider	Cadence Academy Preschool - Urbandale	3054 NW 86th St, Urbandale, IA, 50322
Childcare Provider	Cheryl Trogdon	3645 67th ST, Urbandale, IA, 50322
Childcare Provider	Christine McCorker	6313 Douglas AVE APT 206, Urbandale, IA, 50322
Childcare Provider	DeAnna Ferguson	4013 76th ST, Urbandale, IA, 50322
Childcare Provider	Des Moines Christian Early Education	13007 Douglas Pkwy Ste 400, Urbandale, IA, 50323
Childcare Provider	Dorothy Mae Kids Academy	2506 142nd ST, Urbandale, IA, 50323
Childcare Provider	Dukan Diew	2905 Ashwood DR, Urbandale, IA, 50322
Childcare Provider	Edith Davis	3007 Mary Lynn DR, Urbandale, IA, 50322
Childcare Provider	Eileen Hodgson	4509 93rd ST, Urbandale, IA, 50322
Childcare Provider	Fille Nyiratimiriza	9708 Aurora AVE, Urbandale, IA, 50322
Childcare Provider	Generation Next-ABP	4401 114th St, Urbandale, IA, 50322
Childcare Provider	Growing Tree Early Learning Center	10000 Meredith DR, Urbandale, IA, 50322
Childcare Provider	Khairia Yagoub	4406 62nd ST, Urbandale, IA, 50322
Childcare Provider	Kiddie Academy of Urbandale	14101 Douglas PKWY, Urbandale, IA, 50323
Childcare Provider	Kidz Corner	2957 86th Street, Urbandale, IA, 50322
Childcare Provider	Koalaty Time Encore	2500 NW 128th St, Urbandale, IA, 50323
Childcare Provider	LaVonne Leibow	4209 68th St, Urbandale, IA, 50322
Childcare Provider	Louise Chulu	4805 86th ST UNIT 29, Urbandale, IA, 50322
Childcare Provider	New Horizon Academy - Urbandale	12900 Hickory Drive, Urbandale, IA, 50323
Childcare Provider	Paige Brooks	4330 101st ST, Urbandale, IA, 50322
Childcare Provider	Pius Pals Before and After School Program	3601 66th St, Urbandale, IA, 50322
Childcare Provider	Primrose School of Urbandale	12001 Hickman Rd, Urbandale, IA, 50323
Childcare Provider	Shalom Preschool	3600 75th ST, Urbandale, IA, 50322
Childcare Provider	Sugar Babies Academy	2550 73rd ST, Urbandale, IA, 50322
Childcare Provider	Sugar Babies Nursery	2627 86th St, Urbandale, IA, 50322
Childcare Provider	Teresa Blaylock	4714 172nd ST, Urbandale, IA, 50323
Childcare Provider	Tiny Treasures Lutheran Preschool	8301 Aurora AVE, Urbandale, IA, 50322
Childcare Provider	Traditions Children's Center III	3802 92nd Dr, Urbandale, IA, 50322
Childcare Provider	Urbandale Adventuretime-Karen Acres Elementary	3500 74th ST, Urbandale, IA, 50322

Childcare Provider	Urbandale Adventuretime-Olmsted Elementary	7110 Prairie AVE, Urbandale, IA, 50322
Childcare Provider	Urbandale Adventuretime-Valerius Elementary	3305 92nd ST, Urbandale, IA, 50322
Childcare Provider	Urbandale Adventuretime-Webster Elementary	12955 Aurora AVE, Urbandale, IA, 50323
Childcare Provider	Vesna Muminovic	4016 79th ST, Urbandale, IA, 50322
Drug Drop-off Site	Hy-Vee Pharmacy	8701 Douglas, Urbandale, IA, 50322
Drug Drop-off Site	SafeNet Rx	Bldg 13 11100 Aurora Ave, Urbandale, IA, 50322
Football Field	1 Football Field	Urbandale, Polk County, Iowa, 50322, United States
Football Field	1 Football Field	Urbandale, Polk County, Iowa, 50323, United States
Library	Urbandale Public Library	3520 86th St, Urbandale, IA,
MAT Site	Edmund Joseph Piasecki, NP	2901 86th Street, Urbandale, IA 5032
MAT Site	Judith Marie Hager, NP	14321 Dellwood Drive, Urbandale, IA 50323
Other Sports Facilities	Skateboard Park	Urbandale, Polk County, Iowa, 50322, United States
Other Sports Facilities	2 Other Sports Facilities	Urbandale, Polk County, Iowa, 50322, United States
Public Park	Ashleaf Park	No Address in Data
Public Park	Bent Creek Ridge Park	No Address in Data
Public Park	Bestland Park	No Address in Data
Public Park	Brookshire Open Space	No Address in Data
Public Park	Brookview Park	No Address in Data
Public Park	Colby Woods Park	No Address in Data
Public Park	Coronado Park	No Address in Data
Public Park	Country Club North Open Space	No Address in Data
Public Park	Cross Creek Park	No Address in Data
Public Park	Days Run Open Space	No Address in Data
Public Park	Deer Ridge Park	No Address in Data
Public Park	Donald J. Brush Park	No Address in Data
Public Park	Foxdale Park	No Address in Data
Public Park	Golfview Park	No Address in Data
Public Park	Golfview West Park	No Address in Data
Public Park	Hallbrook Park	No Address in Data
Public Park	Jackaline Baldwin Dunlap Park and Arboretum	No Address in Data
Public Park	Jaycee Park	No Address in Data
Public Park	Jeff Harm Park	No Address in Data
Public Park	Jensen Neighborhood Park	No Address in Data
Public Park	Lakeview Park	No Address in Data
Public Park	Laura A. Ward Park	No Address in Data
Public Park	Lions Park	No Address in Data
Public Park	Meredith Park	No Address in Data
Public Park	Murphy Park	No Address in Data
Public Park	North Karen Acres Park	No Address in Data
Public Park	Northview Estates Park	No Address in Data
Public Park	Northview Park	No Address in Data
Public Park	Rocklyn Park	No Address in Data
Public Park	Sharon Heights Park	No Address in Data
Public Park	South Karen Acres Park	No Address in Data
Public Park	Sylvan Ridge Park	No Address in Data
Public Park	Timberline East Open Space	No Address in Data
Public Park	Timberline Park	No Address in Data
Public Park	Trolley Park	No Address in Data
Public Park	Walker Johnston Park	No Address in Data
Public Park	Walnut Creek Hills Park	No Address in Data
Public Park	Walnut Creek Regional Park	No Address in Data
Public Park	Waterford Park	No Address in Data
Public Park	Winter Park	No Address in Data
Place of Worship	Aldersgate United Methodist Church	No Address in Data

Place of Worship	Baptist Convention of Iowa Church	No Address in Data
Place of Worship	Church of Jesus Christ	No Address in Data
Place of Worship	Cornerstone Community Church	No Address in Data
Place of Worship	Covenant Christian Church	No Address in Data
Place of Worship	Covenant Church of Urbandale	No Address in Data
Place of Worship	Evangelical Covenant Church	No Address in Data
Place of Worship	First Free Methodist Church	No Address in Data
Place of Worship	Free Methodist Church	No Address in Data
Place of Worship	Gloria Dei Lutheran Church	No Address in Data
Place of Worship	God of Prophecy Church	No Address in Data
Place of Worship	Gospel Assembly Church	No Address in Data
Place of Worship	New Hope Assembly of God Church	No Address in Data
Place of Worship	New Hope United Methodist Church	No Address in Data
Place of Worship	Patricia Park United Brethren Church	No Address in Data
Place of Worship	Presbytery of Des Moines	No Address in Data
Place of Worship	Saint Pius X Church	No Address in Data
Place of Worship	Saint Stephen Lutheran Church	No Address in Data
Place of Worship	The Church of Jesus Christ of Latter Day Saints	No Address in Data
Place of Worship	Urban Heights Evangelical Church	No Address in Data
Place of Worship	Urbandale Baptist Church	No Address in Data
Place of Worship	Urbandale United Church of Christ	No Address in Data
Place of Worship	Walnut Hills United Methodist Church	No Address in Data
Place of Worship	Westkirk Presbyterian Church	No Address in Data
Place of Worship	Zion Lutheran Church	No Address in Data
Playground	Urbandale All-Inclusive Playground	No Address in Data
Playground	Walker Johnston Community Playground	No Address in Data
Playground	45 Playgrounds	No Address in Data
School	Karen Acres Elementary School	3500 74th Street, Urbandale, IA, 50322
School	Rolling Green Elementary School	8100 Airline Avenue, Urbandale, IA, 50322
School	Urbandale High School	7111 Aurora Avenue, Urbandale, IA, 50322
School	Urbandale Middle School	7701 Aurora Avenue, Urbandale, IA, 50322
School	Valerius Elementary School	6301 Aurora Avenue, Urbandale, IA, 50322
School	Webster Elementary School	12955 Aurora Avenue, Urbandale, IA, 50323
School	Radiant Elementary School	5050 170th ST, Urbandale, IA, 50323
School	Walnut Hills Elementary School	4240 156th St, Urbandale, IA, 50323
School	Des Moines Christian Elementary School	13007 Douglas Parkway, Urbandale, IA, 50323
School	Des Moines Christian Secondary School	13007 Douglas Parkway, Urbandale, IA, 50323
School	St Pius X Catholic School	3601 66th St, Urbandale, IA, 52601
Soccer Field	Martin Field	Urbandale, Polk County, Iowa, 50322, United States
Soccer Field	10 Soccer Fields	Urbandale, Polk County, Iowa, 50322, United States
SUD or Gambling Treatment Center	Groups Recover Together	Unit 100, 3070 104th Street, Urbandale, IA, 50322, United States
SUD or Gambling Treatment Center	Sober Strategies Inc.	2659 100th Street, Urbandale, IA, 50322, United States
SUD or Gambling Treatment Center	Woodward Youth Corporation	Suite 400W, 6200 Aurora Ave., Urbandale, IA, 50322, United States
Tennis Court	18 Tennis Courts	Urbandale, Polk County, Iowa, 50322, United States
