



## Recovery Readiness Assessment: DeWitt

September, 2024



Report provided to the Iowa Department of Health and Human Services

---

*This project is supported by State Opioid Response funds through the Iowa Department of Health and Human Services, Bureau of Substance Use (IowaHHS) via a subaward from the Substance Abuse and Mental Health Services Administration (SAMHSA) of the U.S. Department of Health and Human Services (HHS). The contents are those of the author(s) and do not necessarily represent the official views of, nor an endorsement by, IowaHHS, SAMHSA/HHS, or the U.S. Government.*

# Table of contents

<b>Overview</b> . . . . .	<b>2</b>
<b>What is a Recovery-Ready Community?</b> . . . . .	<b>2</b>
What is Recovery? . . . . .	2
What is Recovery Readiness? . . . . .	3
<b>What is a Recovery Community Organization?</b> . . . . .	<b>3</b>
<b>Is Your Community Recovery Ready?</b> . . . . .	<b>4</b>
<b>What Are the Resources in Your Community?</b> . . . . .	<b>5</b>
SAMHSA Dimensions of Recovery Resources . . . . .	6
Social Determinants of Health Recovery Resources . . . . .	9
<b>Which Neighborhoods in Your Community Need Additional Health Resources and Support?</b> . . . . .	<b>12</b>
Substance Use Vulnerability . . . . .	12
Social Determinants of Health . . . . .	17
<b>Appendix 1: Data Used in this Report</b> . . . . .	<b>18</b>
<b>Appendix 2: Mutual Aid Meetings Near DeWitt</b> . . . . .	<b>19</b>
<b>Appendix 3: Resources Near DeWitt</b> . . . . .	<b>20</b>

---

## Overview

At the request of the Iowa Department of Health and Human Services, Bureau of Substance Use, the Public Science Collaborative (PSC) developed community-specific reports to support recovery efforts in Iowa. Recognizing the need to strengthen substance use recovery efforts throughout the state, we identified a large number of existing recovery-oriented resources in DeWitt, which we describe and map in the following pages. We developed additional maps to identify at-risk neighborhoods that will benefit from targeted health interventions and additional community resources. For additional questions or information about this report, the data tools described, or the Public Science Collaborative, please reach out to the principal investigators of this study, Dr. Shawn Dorius at [sdorius@iastate.edu](mailto:sdorius@iastate.edu), or Dr. Cassandra Dorius at [cdorius@iastate.edu](mailto:cdorius@iastate.edu).

In this report, we define recovery and recovery-ready communities and describe some of the recovery organizations that are emerging across Iowa. We then describe the recovery resources that we collected for your community, providing summary information about where your community has strength and where its resource base can look to grow in the future. We then show you how your community recovery services and resources align with the Substance Abuse and Mental Health Administration (SAMHSA) categories of recovery and where those resources are in your community. We also classified your community assets according to the Centers for Disease Control's social determinants of health framework, which can be useful as you think holistically about the health and well-being of people living there.

We have added two other sets of data and maps in this report that might be helpful in your recovery readiness planning. The first is a set of maps that identify substance use vulnerability for census tracts in your community. These can be helpful in knowing what kinds of substances people are most likely to be recovering from in your community, where to marshal resources and efforts to support at-risk neighborhoods, and where to plan events that meet people where they are. A second set of data and maps project neighborhood-level scores for a community health index that measures the social determinants of health problems. This index is designed to help practitioners and local community groups better understand neighborhoods that could use extra support, resources, and investments to improve the health and well-being of individuals and families.

## What is a Recovery-Ready Community?

### What is Recovery?

The Iowa Department of Health and Human Services and the Substance Abuse and Mental Health Services Administration (SAMHSA) use the following working definition:

*"A process of change through which individuals improve their health and wellness, live a self-directed life, and strive to reach their full potential."*

A second useful definition of recovery that has influenced the PSC approach to recovery community readiness was developed by Bill White:

*"Recovery is the experience through which individuals, families, and communities impacted by severe alcohol and other drug (AOD) problems utilize internal and external resources to voluntarily resolve these problems, heal the wounds inflicted by AOD-related problems, actively manage their continued vulnerability to such problems, and develop a healthy, productive, and meaningful life."*

Common to both definitions is that recovery is not a state or moment in life, but a process of moving toward better health in an actively managed and self-directed way. Recovery takes time and often involves not just the individual, but family and community. For this reason, the external resources noted in the White definition are what motivate our emphasis on recovery-ready communities. Resources outside of the individual, including housing, transportation, recreation, alcohol advertising, and schools, can lead to an early onset of recovery, longer recovery, and more stable recovery. One way these external resources contribute to recovery is through their impact on individual recovery capital. If we knew which resources were most helpful to long-run recovery, we could target towns and cities with large stocks of 'recovery resources' to grow Recovery Community Centers.

---

## What is Recovery Readiness?

A recovery-ready community provides a comprehensive and supportive environment for individuals recovering from substance use disorders (SUD). This includes a continuum of care that spans prevention, treatment, and long-term recovery support. Key elements include accessible healthcare, peer support networks, educational and employment opportunities, harm reduction services, anti-stigma initiatives, and a sense of purpose. By fostering collaboration among community members, institutions, and policymakers, a recovery-ready community aims to create a nurturing ecosystem that promotes sustained recovery and overall well-being.

In Iowa, a recovery-ready community supports multiple recovery pathways, meets the needs of its recovery population, is integrated and coordinated across the formal and informal recovery-oriented system of care, and has a vibrant recovery culture.

## What is a Recovery Community Organization?

Recovery organizations are groups or institutions that support individuals recovering from substance use disorders. While recovery organizations come in many forms, they share a common commitment to providing a range of services and resources to help people sustain their recovery, improve their health and well-being, and reintegrate into society. Most community-based recovery organizations will offer some form of peer support, either in the form of peer support specialists, recovery coaches, or mutual aid meetings, and a range of activities and services to grow community and connection among people in recovery. These organizations also offer a substance-free environment where all are welcome and people in recovery can receive guidance in daily living activities such as finding stable housing, a job, volunteer opportunities, recreation and social groups, and linkages to legal support, for example. A few of the most well-known recovery organizations include:

- **Recovery Houses:** These are safe, substance-free living environments that support people in recovery from substance use disorders. Most recovery houses provide a structured and supportive community where residents can focus on their recovery journey and live among other people in recovery. Oxford Houses are among the most well-known recovery residences.
- **Recovery Community Centers:** These centers are free, universal access physical spaces that offer a variety of services to support individuals in recovery. A typical recovery community center will host mutual aid meetings, maintain a network of local recovery coaches, engage in community advocacy for people in recovery, and coordinate life-skills training, social activities, employment assistance, housing assistance, and linkages to educational resources. They will also coordinate with first responders, parole officers, and emergency departments to support people with substance use disorders.
- **Recovery Cafes:** These community spaces bring people in recovery together, providing a space to socialize with other people in recovery, support one another, and engage in service. Cafés often provide free hot meals, beverages, and other basic needs to support people in recovery. They might also offer peer support and other activities in a welcoming, substance-free environment. The [Recovery Café Network](https://recoverycafenetwork.org/)<sup>1</sup> is a good starting place to learn more.
- **Recovery High Schools and Collegiate Recovery Programs:** These educational institutions provide a supportive environment for students in recovery, helping them achieve academic success while maintaining their sobriety. They do this in much the same way as community centers and cafes, by offering peer support, community, and recovery-focused activities. Iowa currently has three collegiate recovery programs.

---

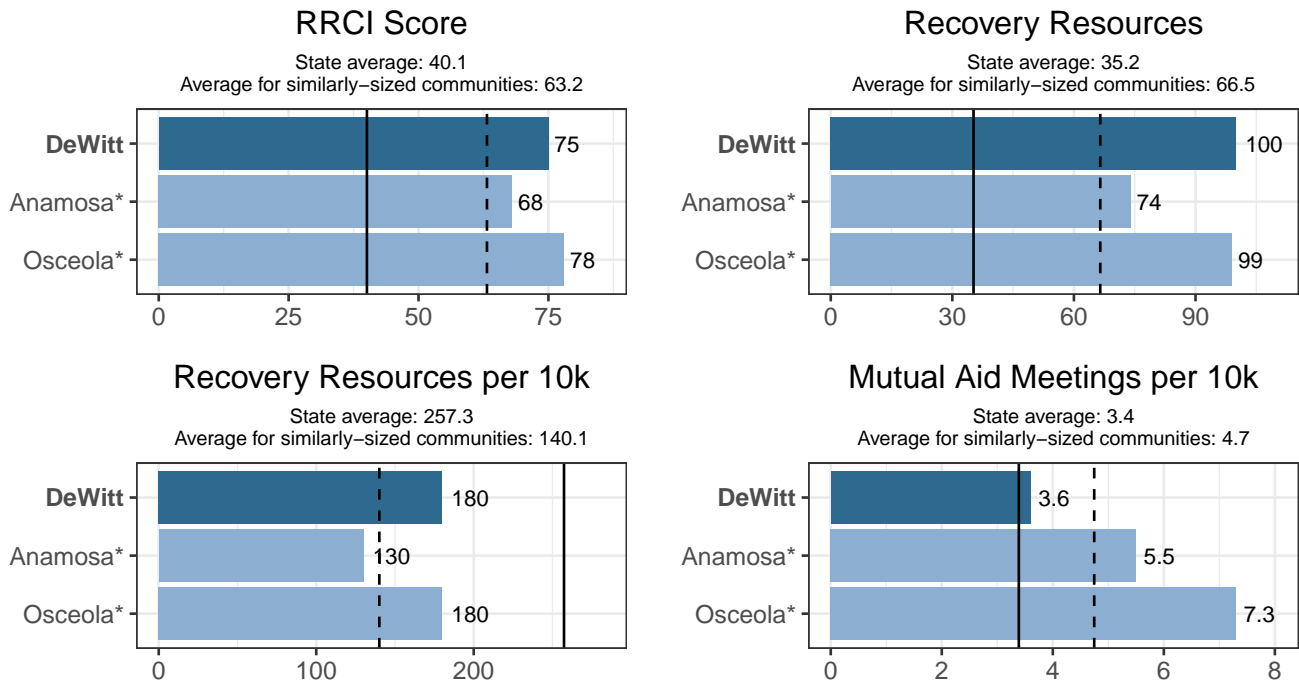
<sup>1</sup><https://recoverycafenetwork.org/>

# Is Your Community Recovery Ready?

We consulted scientific literature on substance use recovery and engaged key stakeholders, including people in recovery and individuals from around the country and in Iowa who work directly with recoverees. From these efforts, we identify 24 categories of community-based recovery resources and services. Collecting all of that data for each of Iowa’s cities and towns yielded a total of nearly 40,000 community resources that support recovery. We mapped and analyzed these resources to identify a short list of ‘Recovery Ready’ communities across the state, culminating in the first-of-its-kind index: The Recovery Ready Community Index (RRCI).

The RRCI is comprised of three sub-indices: total number of resources, total resources per 10,000 population, and total mutual aid meetings per 10,000 population (the first two categories include all resources except mutual aid meetings). A community’s score is calculated by its percentile rank among all Iowa communities. For instance, the community with the most resources has a total resources percentile score of 99, while the one with the fewest has a score of 0. A community’s overall recovery readiness score is the average of its percentile ranking across each of the three sub-indices. The Public Science Collaborative designed and created a public-facing, [interactive dashboard<sup>2</sup>](#) that allows people to further explore the RRCI, compare recovery readiness scores, and evaluate communities.

Figure 1 below displays recovery resources in DeWitt compared to the two Iowa cities most similar in population, Anamosa and Osceola, as well as the state average and average for cities in a similar population group (2,500 - 9,999).



\* The Iowa cities most comparable to DeWitt by population are Anamosa and Osceola.

\*\* The solid vertical line represents the average for all 944 communities in Iowa and the dashed vertical line represents the average for Iowa communities with populations of 2,500 – 9,999 people.

Figure 1: Recovery Resources in DeWitt

DeWitt ranks 10th of 102 on the RRCI in its size category (2,500 - 9,999). In the same population group, DeWitt ranks 11th in total resources, 7th in resources per 10,000 people, and 55th in mutual aid meetings per 10,000 people.

In addition to the RRCI, a community might also consider resource diversity. That is, whether DeWitt has a wide range of types of resources to support multiple pathways to recovery. On this measure, DeWitt has 13 types of non-meeting resources, compared to the average of 10.8 for cities with a population of 2,500 - 9,999.

<sup>2</sup><https://publicsciencecollaborative.shinyapps.io/RRCI/>

## What Are the Resources in Your Community?

Overall, DeWitt has 8 mutual aid meetings and 67 non-meeting recovery resources non-meeting recovery resources. The tables below include data about the specific kinds of mutual aid meetings and other recovery resources available in your community. Appendices 2 and 3 have a full list of these resources. Following the tables, we have prepared maps that break up the data into categories of similar types of resources and show where resources are located in DeWitt. These maps can be used to help identify areas that already have plentiful recovery resources and those that have limited resources and may need additional support.

Table 1: Types of Mutual Aid Meetings in DeWitt

Meeting Type	Total Meeting Locations	Total Meetings
Alcoholics Anonymous	1	7
Al-Anon	1	1

Table 2: Types of Recovery Resources in DeWitt

Resource Type	Total Resources
Baseball/Softball Diamond	11
Place of Worship	10
Public Park	10
Childcare Provider	5
School	5
Tennis Court	4
Football Field	3
Playground	3
Soccer Field	3
Drug Drop-off Site	2
Outdoor Basketball Court	2
Peer Support Provider	2
Beach	1
Hospital	1
Lake	1
Library	1
Other Sports Facilities	1
Recovery Housing	1
Section 8 Housing	1

## SAMHSA Dimensions of Recovery Resources

As defined by SAMHSA, recovery is "A process of change through which individuals improve their health and wellness, live self-directed lives, and strive to reach their full potential." Because recovery is holistic and can look different for everybody, the SAMHSA Dimensions of Recovery listed below help identify the different parts of life and the different resources that are useful in supporting recovery. The following maps identify resources in DeWitt that fit into each of those dimensions of recovery.

The SAMHSA Dimensions of Recovery include ([Click here for more information](#)<sup>3</sup>):

- **Community** (Peer Support–Specialists and Coaches, Recovery Organizations–Community and Collegiate, Mutual Aid Meetings, Libraries, Parks and Playgrounds, Lakes and Beaches, Trails, Sports Facilities)
- **Health** (Access Centers, Drug Drop Off Sites, Hospitals and Clinics, MAT Sites, Mental & Behavioral Health Centers, SUD and Gambling Treatment Centers, YMCA Gyms)
- **Home** (Childcare Providers, Recovery Housing, Section Eight Housing, Shelters, Intimate Partner Violence Programs)
- **Purpose** (Workforce Development Offices, Colleges and Universities, K-12 Schools, Places of Worship)

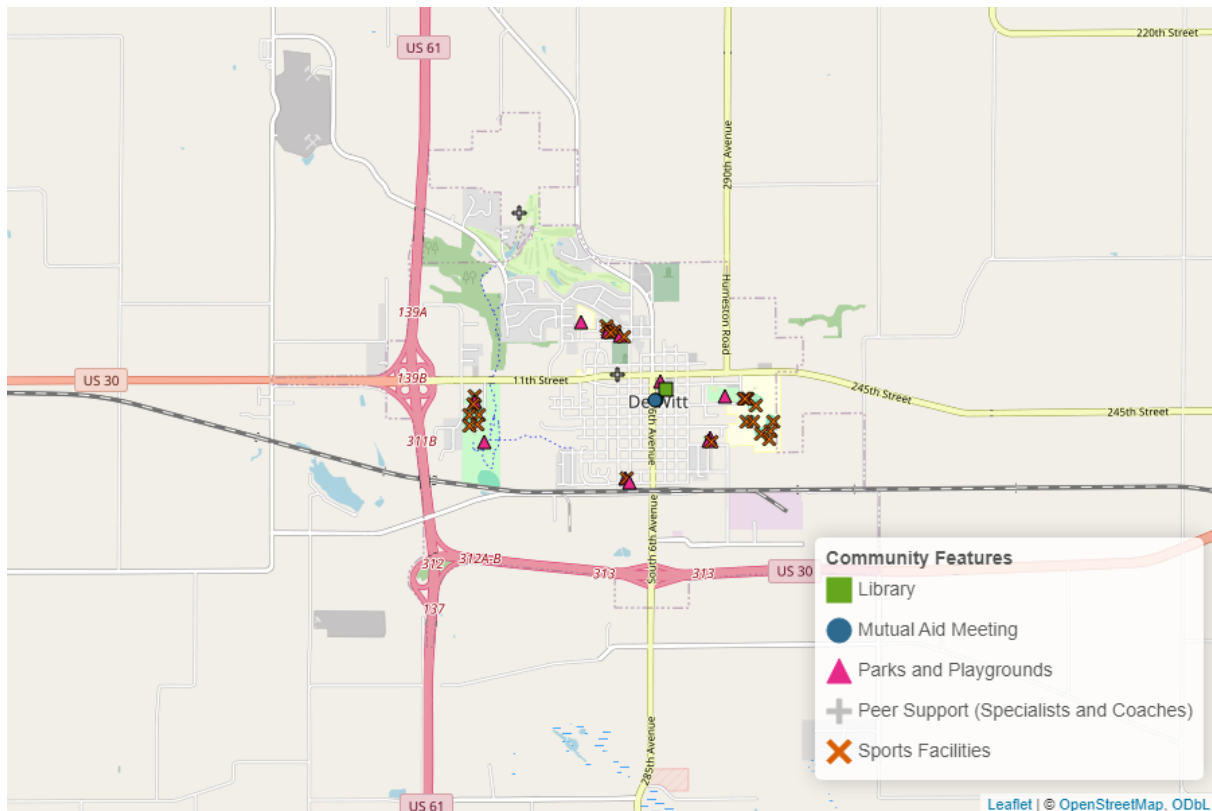


Figure 2: Community Resources in DeWitt

<sup>3</sup><https://www.samhsa.gov/find-help/recovery>

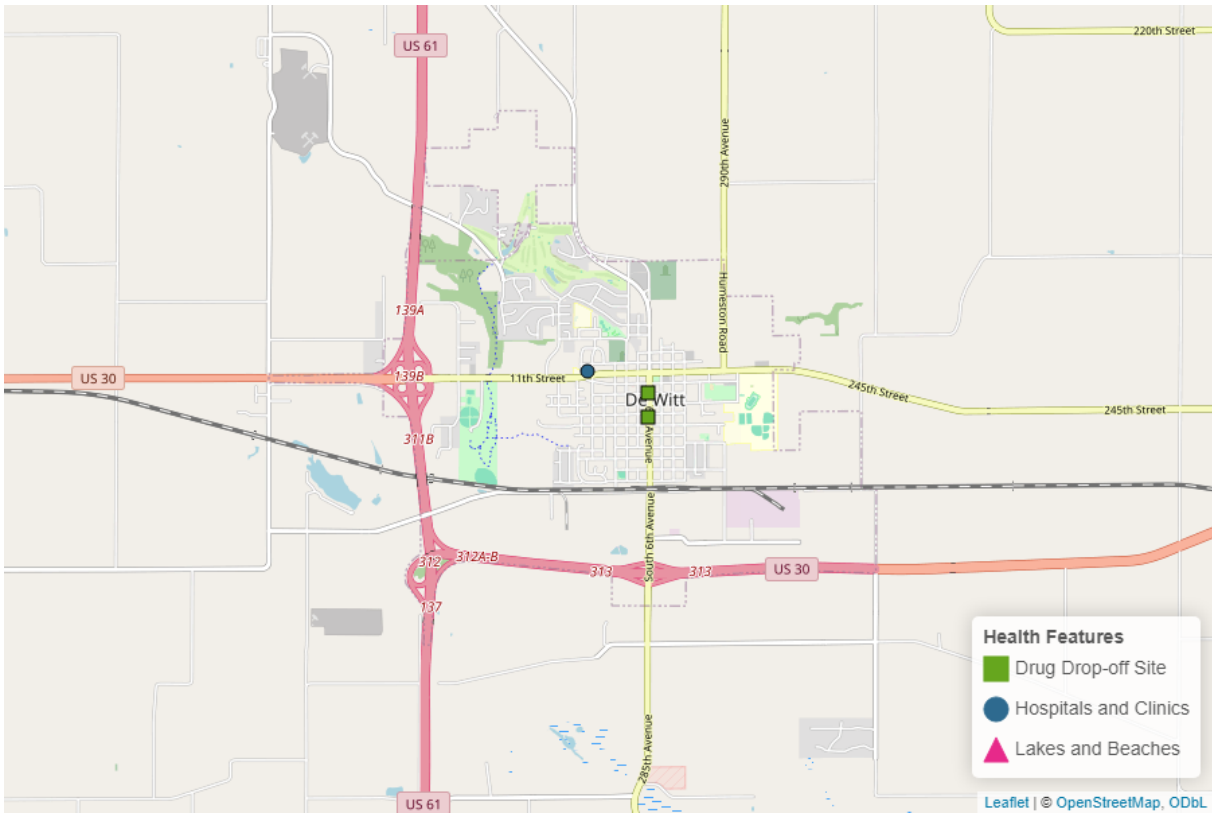


Figure 3: Health Resources in DeWitt

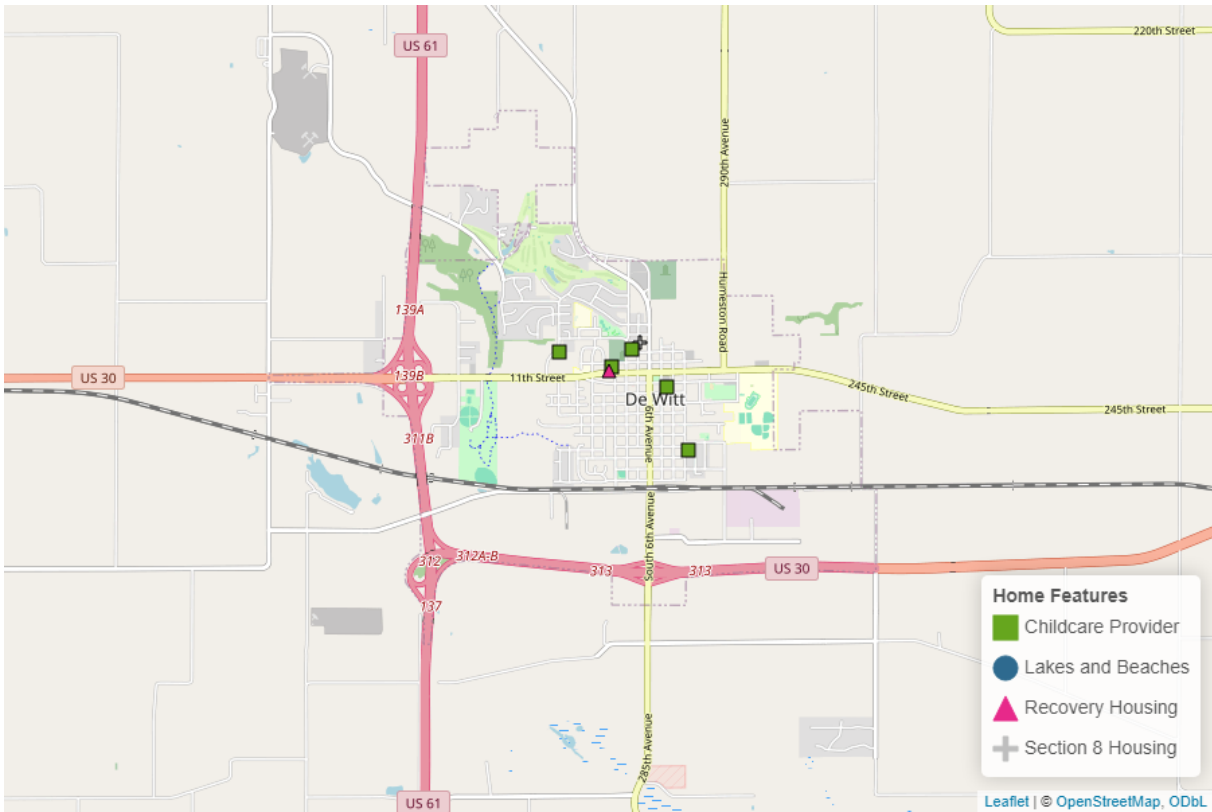


Figure 4: Home Resources in DeWitt



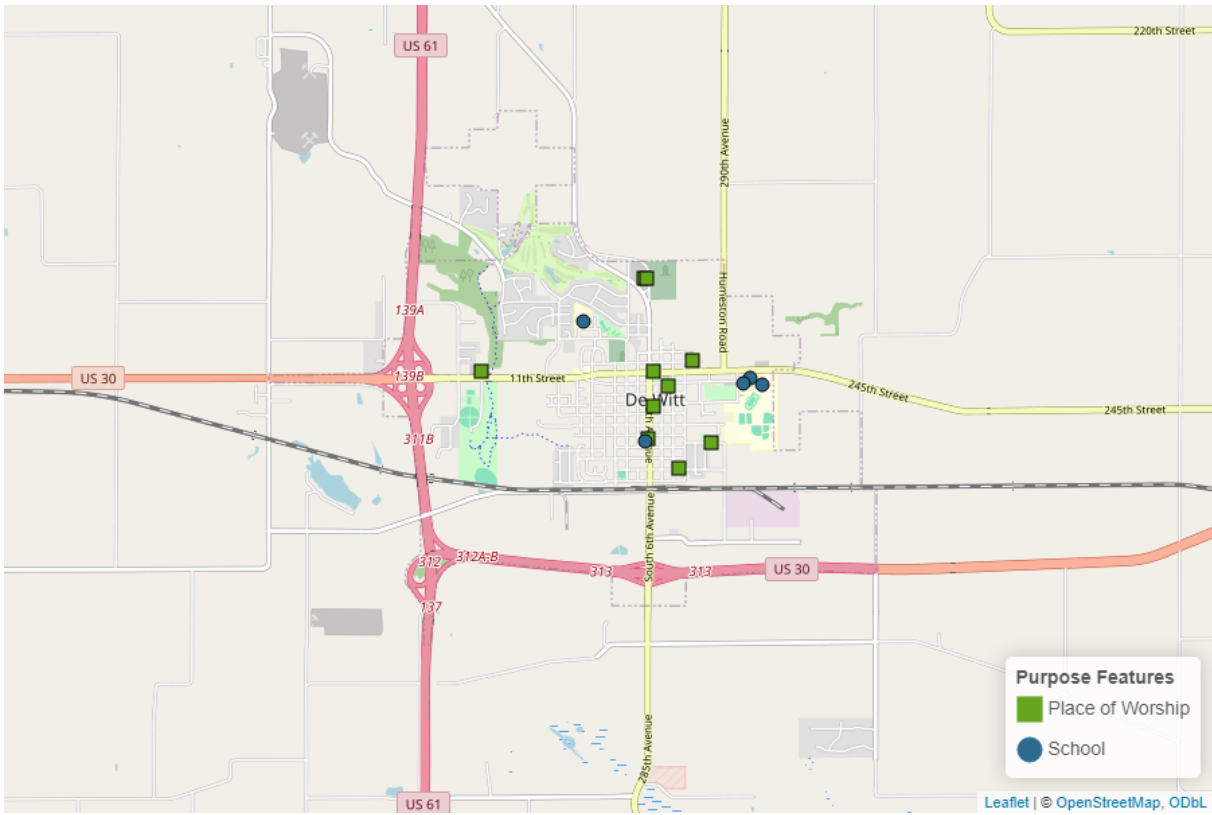


Figure 5: Purpose Resources in DeWitt

## Social Determinants of Health Recovery Resources

The Social Determinants of Health is an established framework for thinking about the conditions of a person's life that contribute to their overall well-being. For example, a family that living in an area with limited resources supporting families and children (such as childcare providers and parks or playgrounds) may experience other struggles as a result, like increased transportation costs that place stressors on a family's finances. These maps can also be used in conjunction with the population data in the next section to help identify vulnerable populations and neighborhoods. Neighborhoods with health and substance use vulnerabilities may need greater access to specific supporting resources.

The SDOH categories include ([Click here for more information](#)<sup>4</sup>):

- **Health Care Access and Quality** (Access Centers, Drug Drop Off Sites, Hospitals and Clinics, MAT Sites, Mental & Behavioral Health Centers, SUD and Gambling Treatment Centers)
- **Social and Community Context** (Peer Support–Specialists and Coaches, Recovery Organizations–Community and Collegiate, Intimate Partner Violence Programs, Mutual Aid Meetings, Places of Worship)
- **Neighborhood and Built Environment** (Libraries, Parks and Playgrounds, YMCA Gyms, Lakes and Beaches, Trails, Sports Facilities)
- **Education Access and Quality** (Colleges and Universities, K-12 Schools)
- **Economic Stability** (Childcare Providers, Recovery Housing, Section Eight Housing, Shelters, Workforce Development Offices)

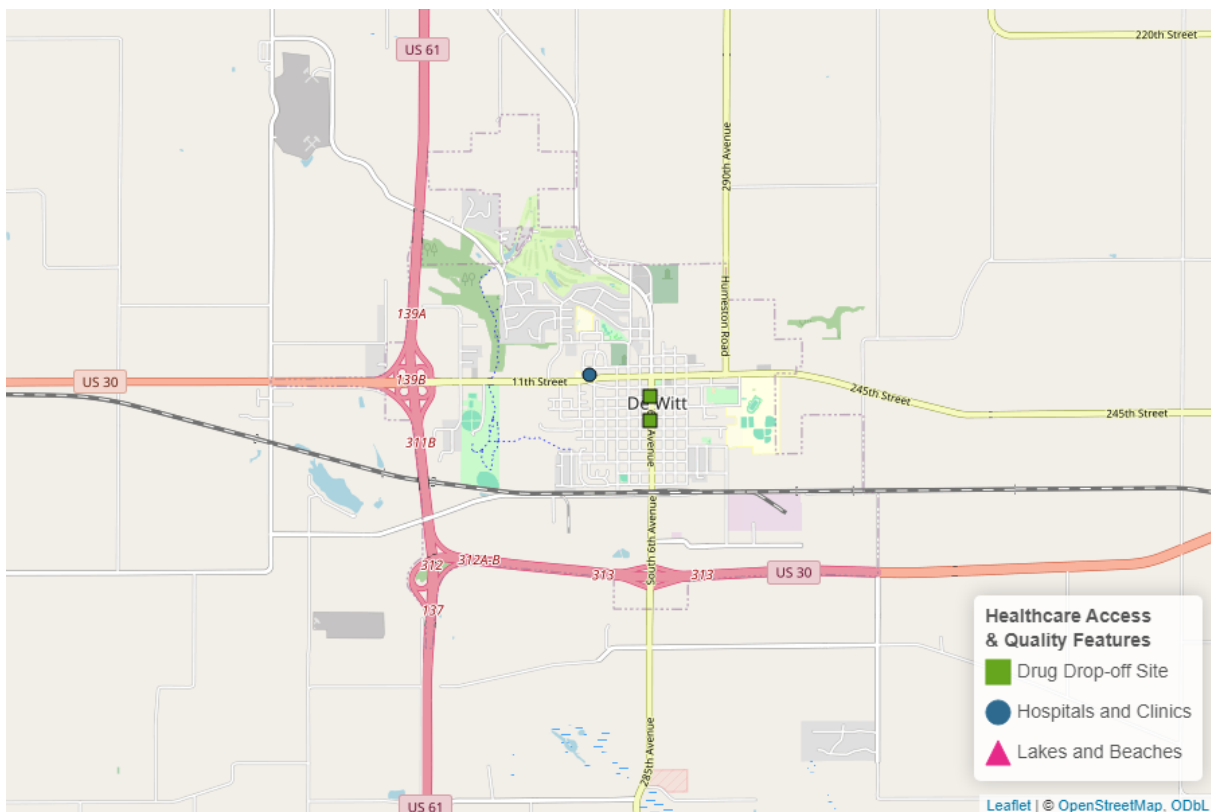


Figure 6: Health Care Access and Quality Resources in DeWitt

<sup>4</sup><https://health.gov/healthypeople/priority-areas/social-determinants-health>

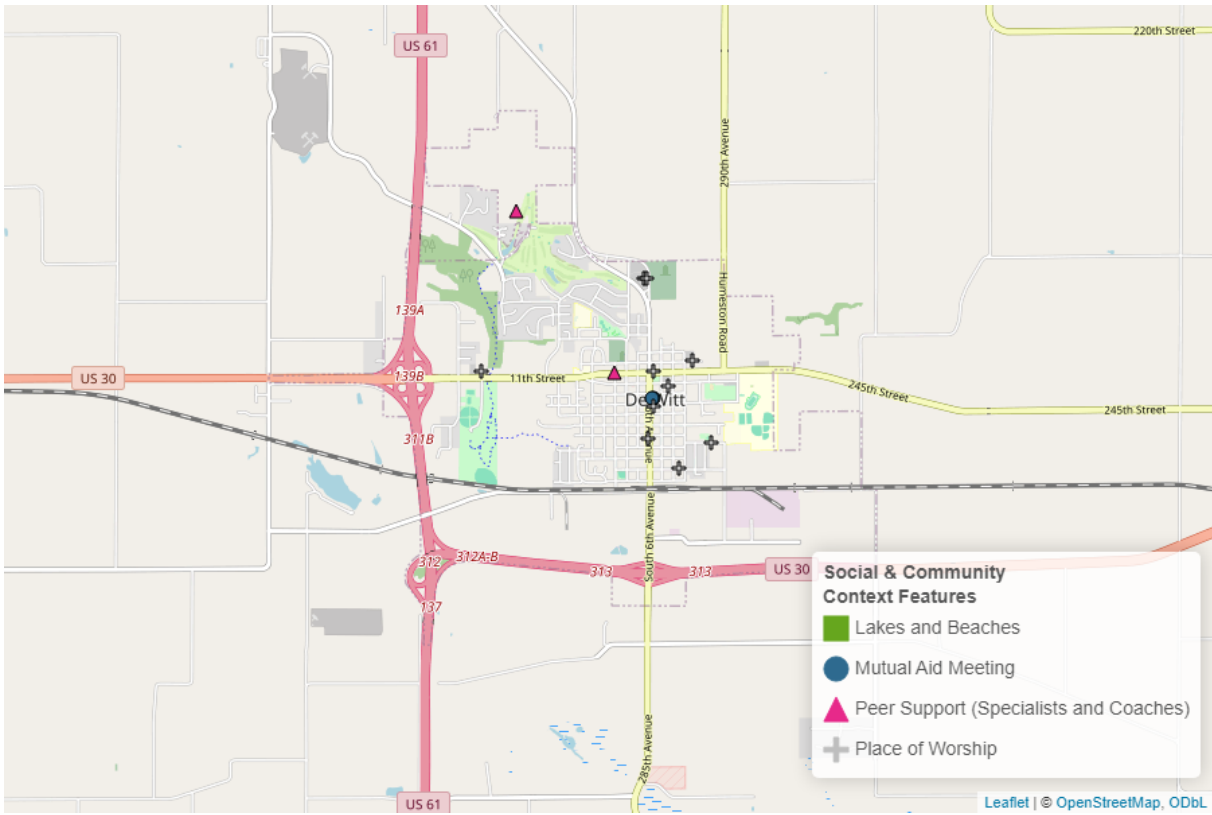


Figure 7: Social and Community Context Resources in DeWitt

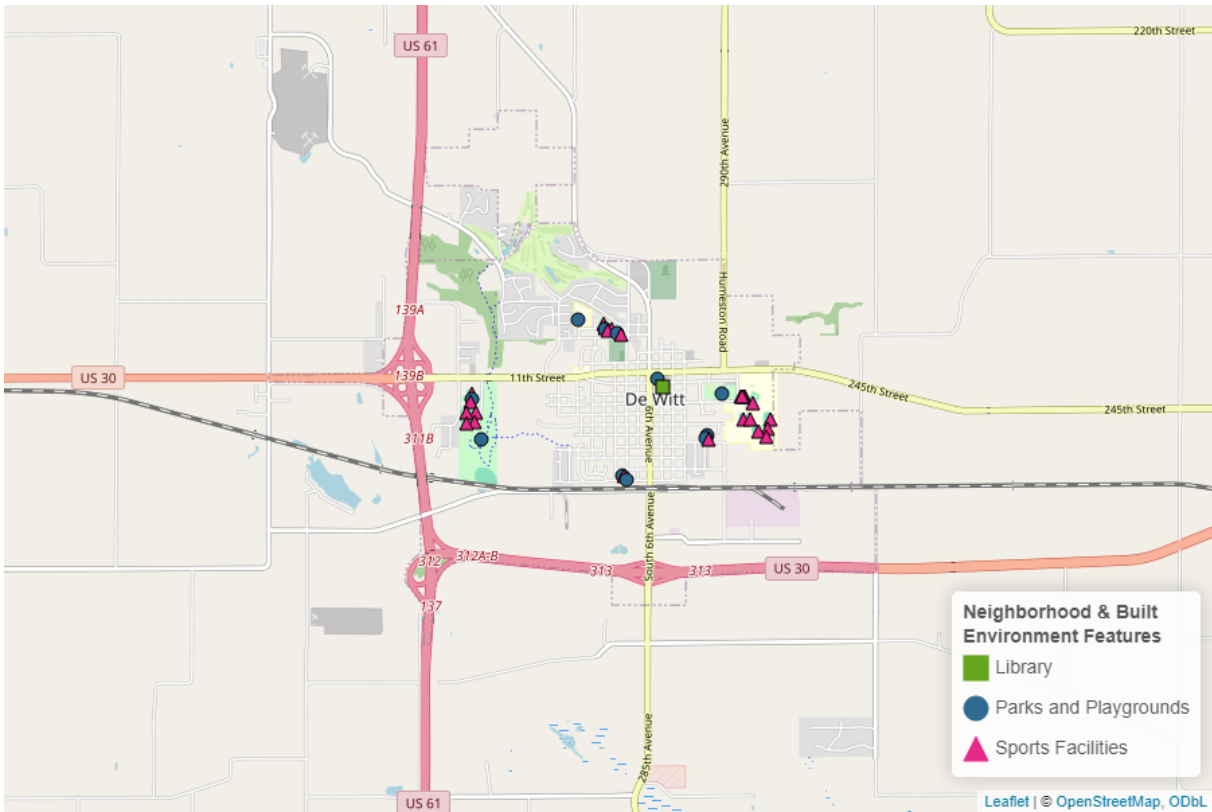


Figure 8: Neighborhood and Built Environment Resources in DeWitt

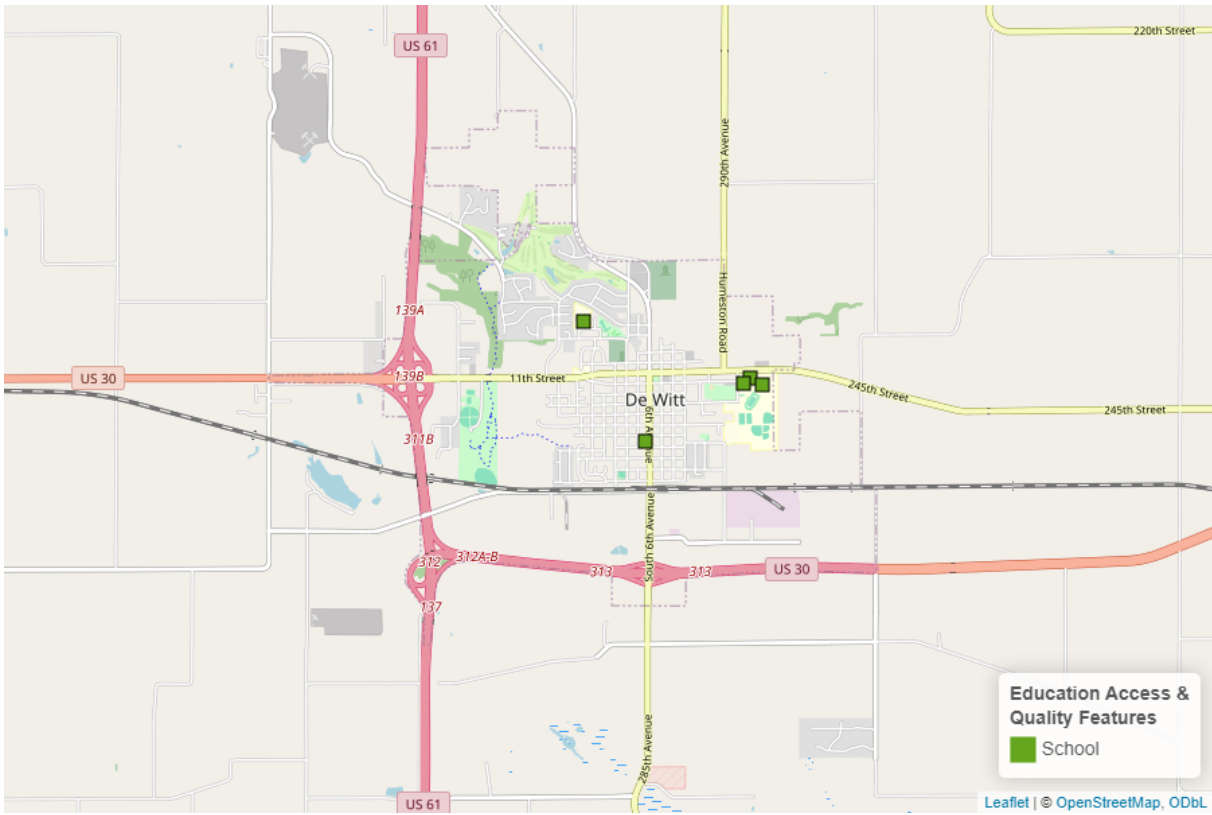


Figure 9: Education Access and Quality Resources in DeWitt

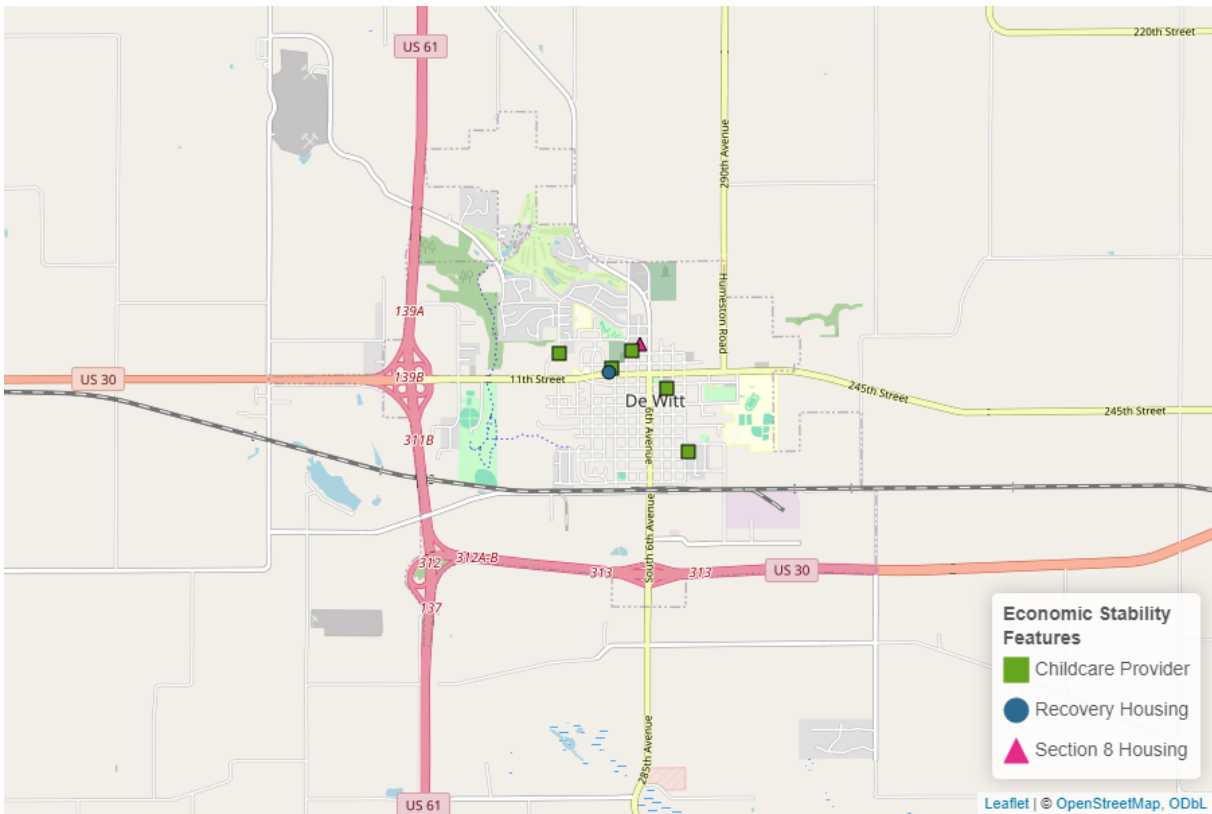


Figure 10: Economic Stability Resources in DeWitt

# Which Neighborhoods in Your Community Need Additional Health Resources and Support?

## Substance Use Vulnerability

The Public Science Collaborative has developed data resources to help community organizations, local governments, and public health practitioners resources more effectively target substance use prevention, treatment, and recovery interventions to the places in greatest need. Geographic ‘hot spots’ identify places where local residents are at exceptionally high risk for substance use disorder. We estimated statistical models using administrative data from the Treatment Episode Admissions Dataset (TEDS-A) and the National Survey of Drug Use and Health (NSDUH) to measure significant relationships between substances of misuse and socio-demographic characteristics known to affect health equity and substance use vulnerability. These maps use Census Bureau estimates of these same neighborhood characteristics, by census tract, to create indexes for each substance. Once mapped, these data help us to identify places with especially high concentrations of at-risk characteristics that need targeted resources to reduce health inequities. You can explore the maps interactively and learn more about the underlying models on PSC’s [dashboard for substance use vulnerability](#).<sup>5</sup>

Identification of towns and neighborhoods with exceptionally high (or low) risk of harmful use of a specific substance can guide public health outreach efforts and enable more targeted, substance-specific interventions based on known neighborhood risk factors. To assist in this work, the following pages include substance use vulnerability maps for overall substance use, opioids, methamphetamine, heroin, alcohol, cannabis, cocaine, and benzodiazepines.

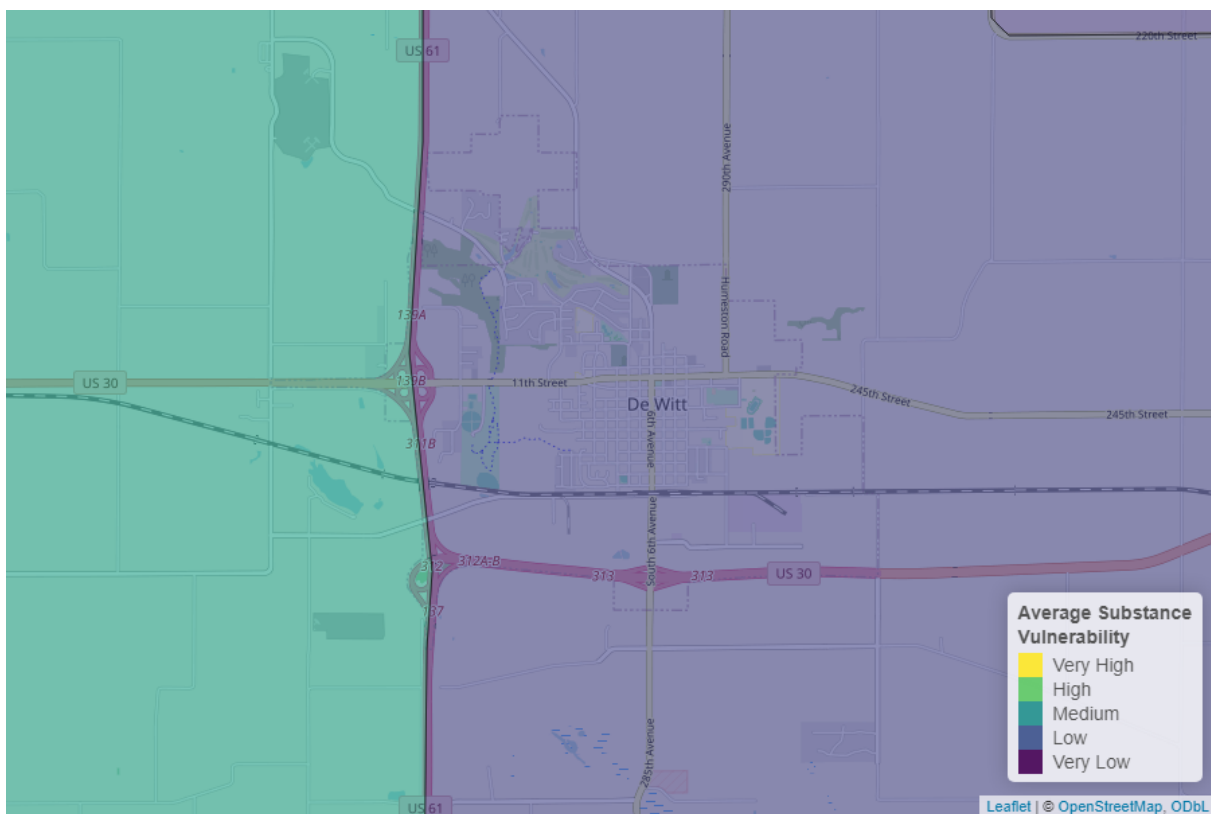


Figure 11: Overall Substance Use Vulnerability in DeWitt

Overall substance use vulnerability varies by neighborhood in DeWitt, but is generally about equal to other communities in Iowa. Due to neighborhood vulnerability, specific neighborhoods may benefit from a targeted approach rather than community-wide efforts. Community-wide vulnerability was highest for opioids, and a breakdown for each substance is shown in the figures below.

<sup>5</sup>[https://publicsciencecollaborative.shinyapps.io/substance\\_use\\_vulnerability/](https://publicsciencecollaborative.shinyapps.io/substance_use_vulnerability/)

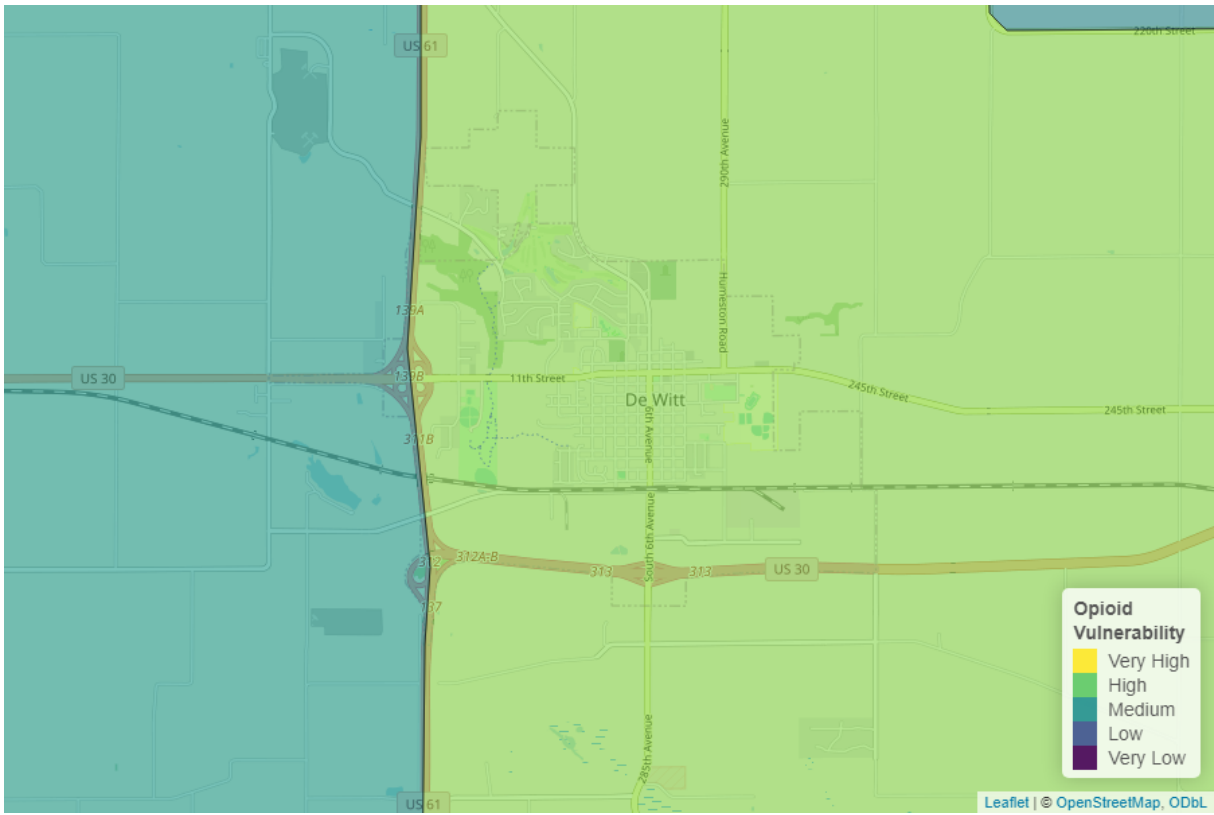


Figure 12: Opioid Vulnerability in DeWitt

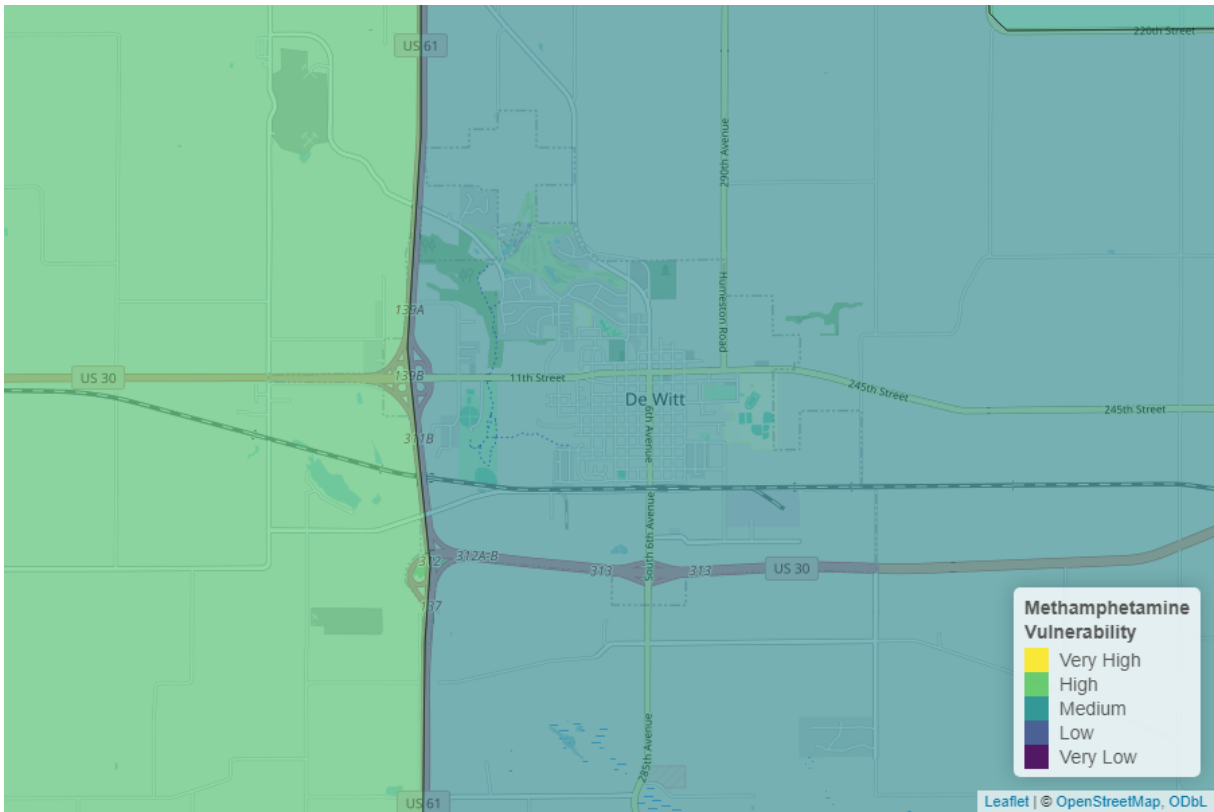


Figure 13: Methamphetamine Vulnerability in DeWitt

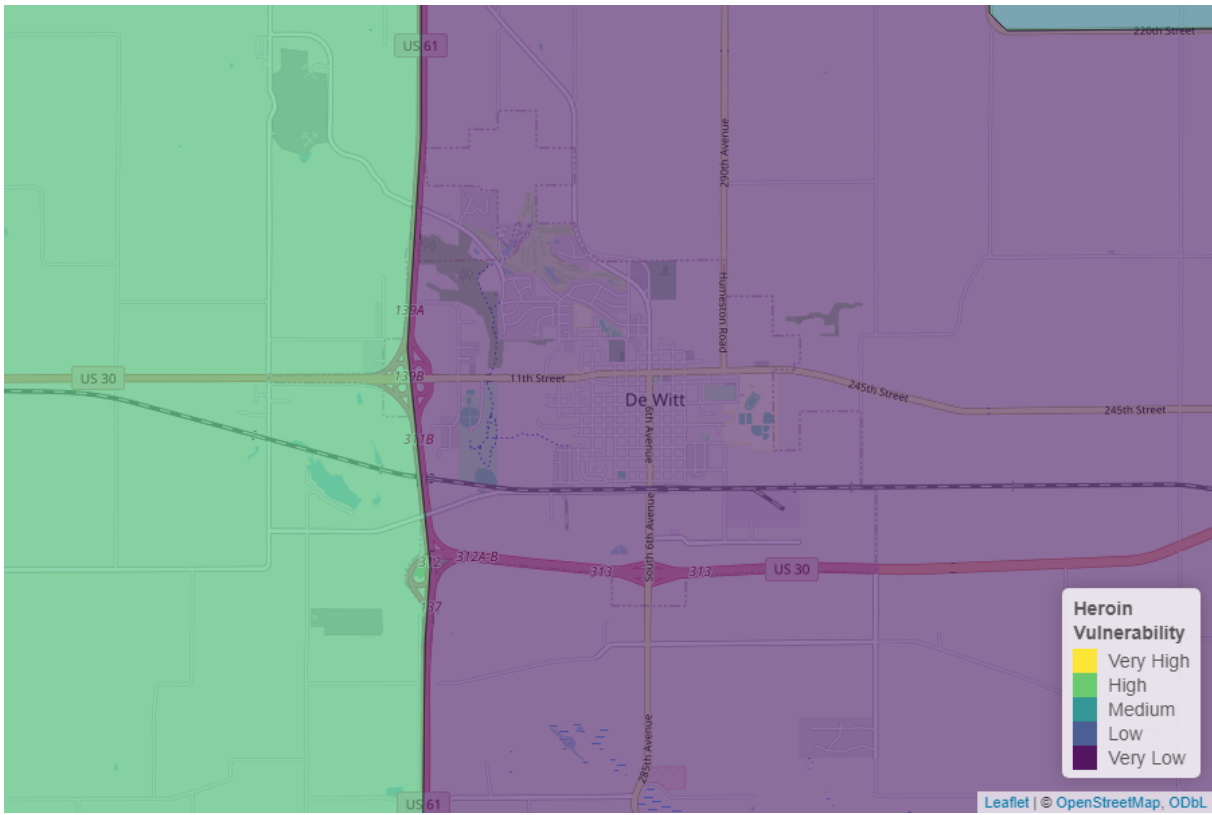


Figure 14: Heroin Vulnerability in DeWitt

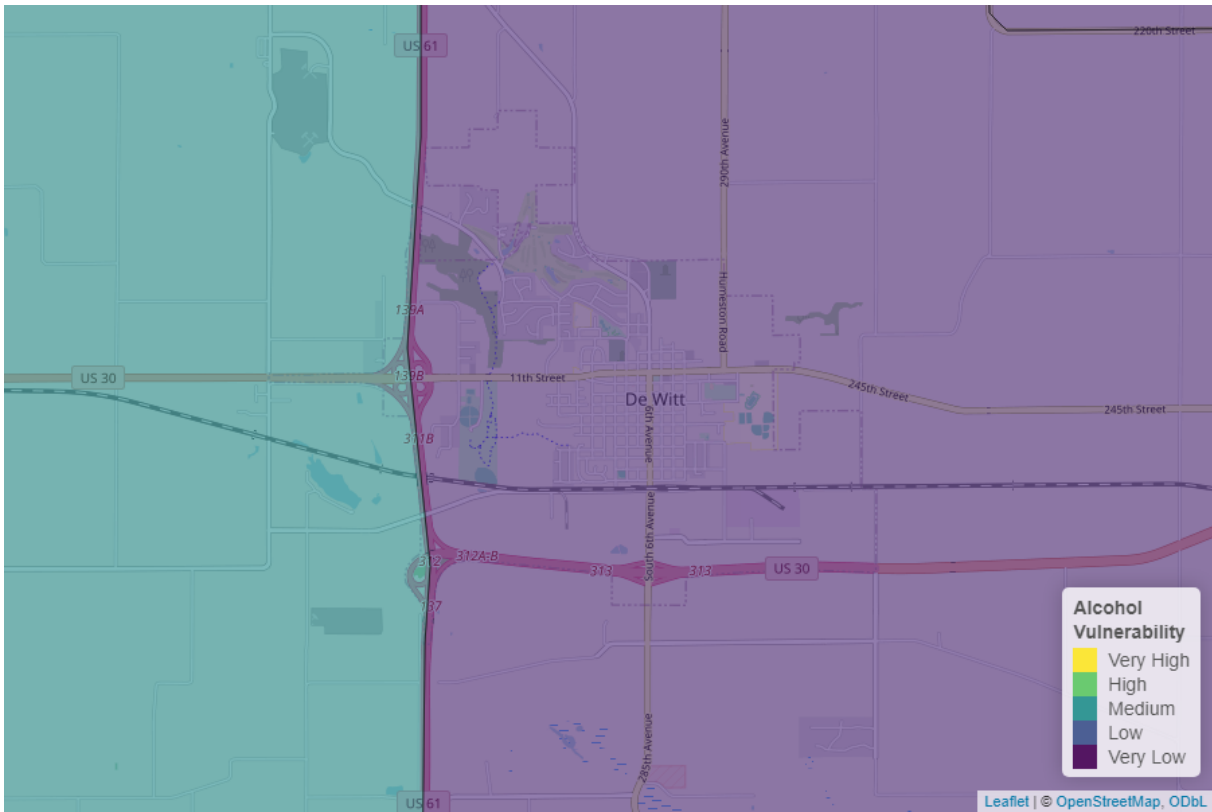


Figure 15: Alcohol Vulnerability in DeWitt

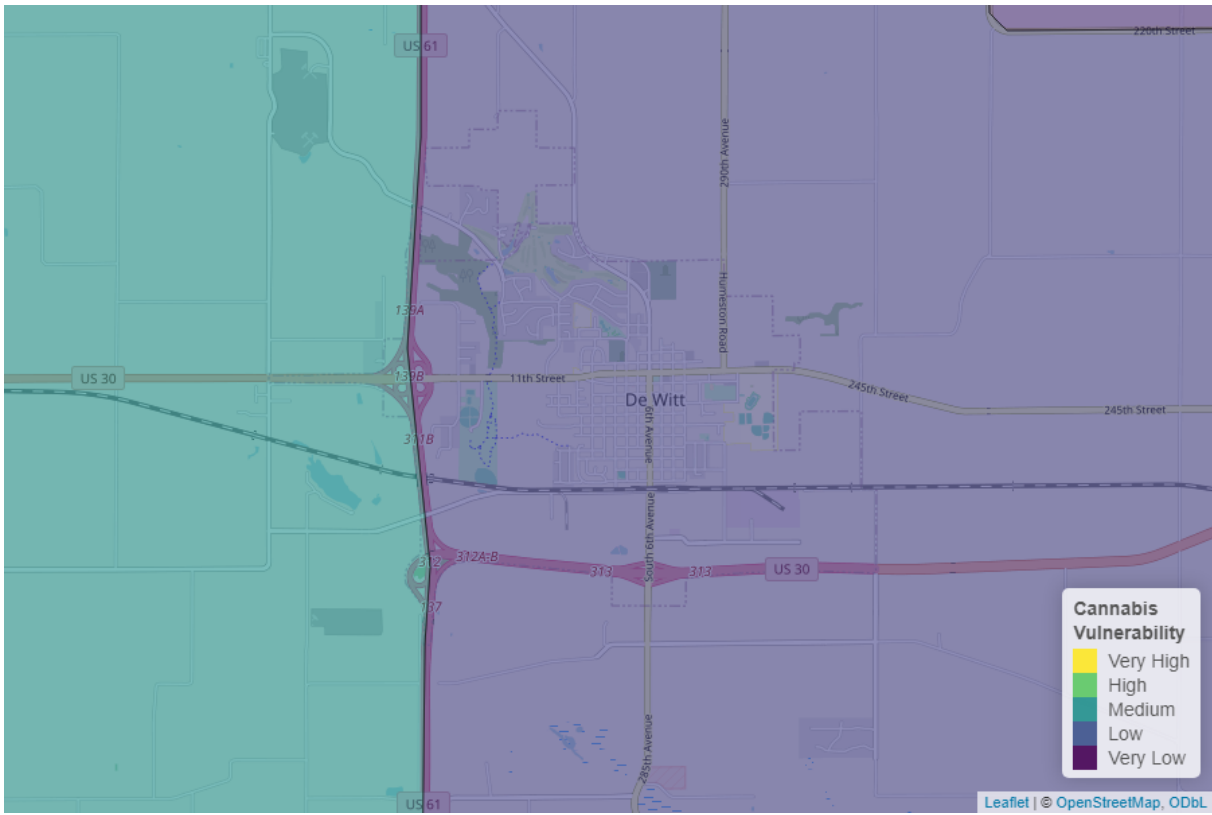


Figure 16: Cannabis Vulnerability in DeWitt

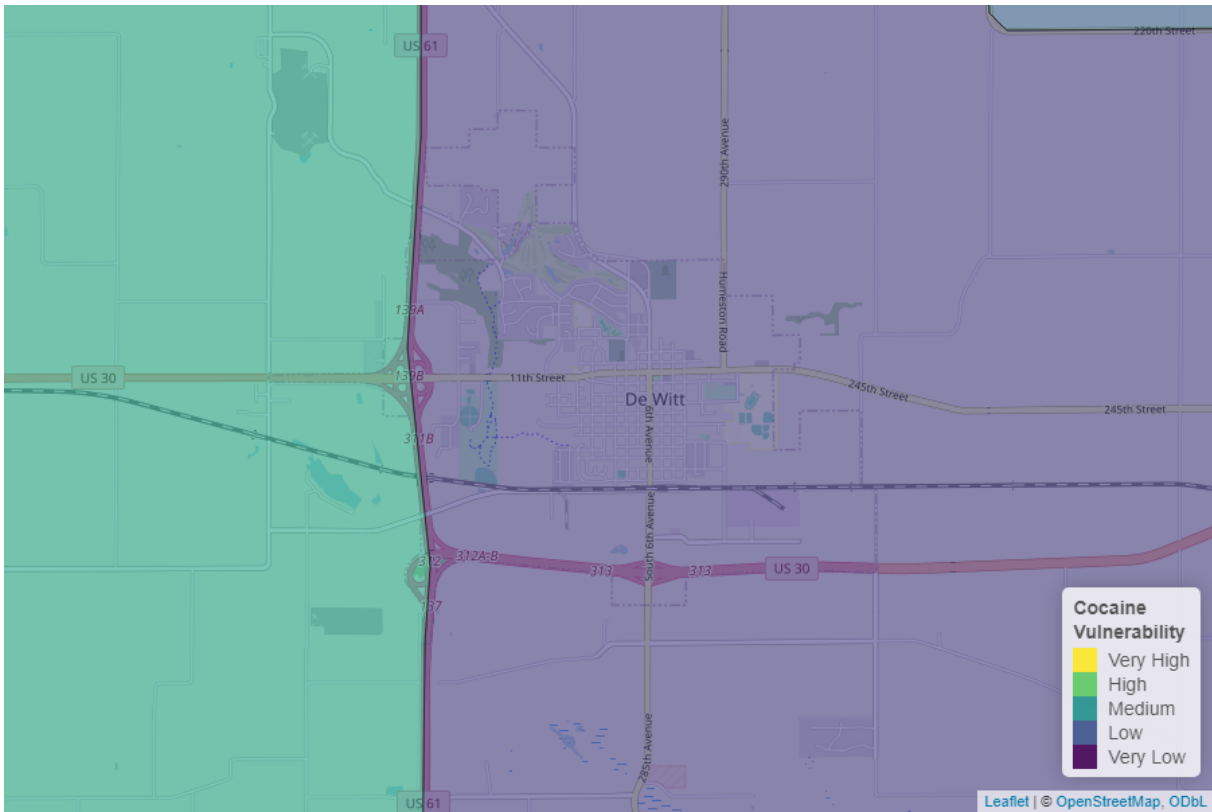


Figure 17: Cocaine Vulnerability in DeWitt



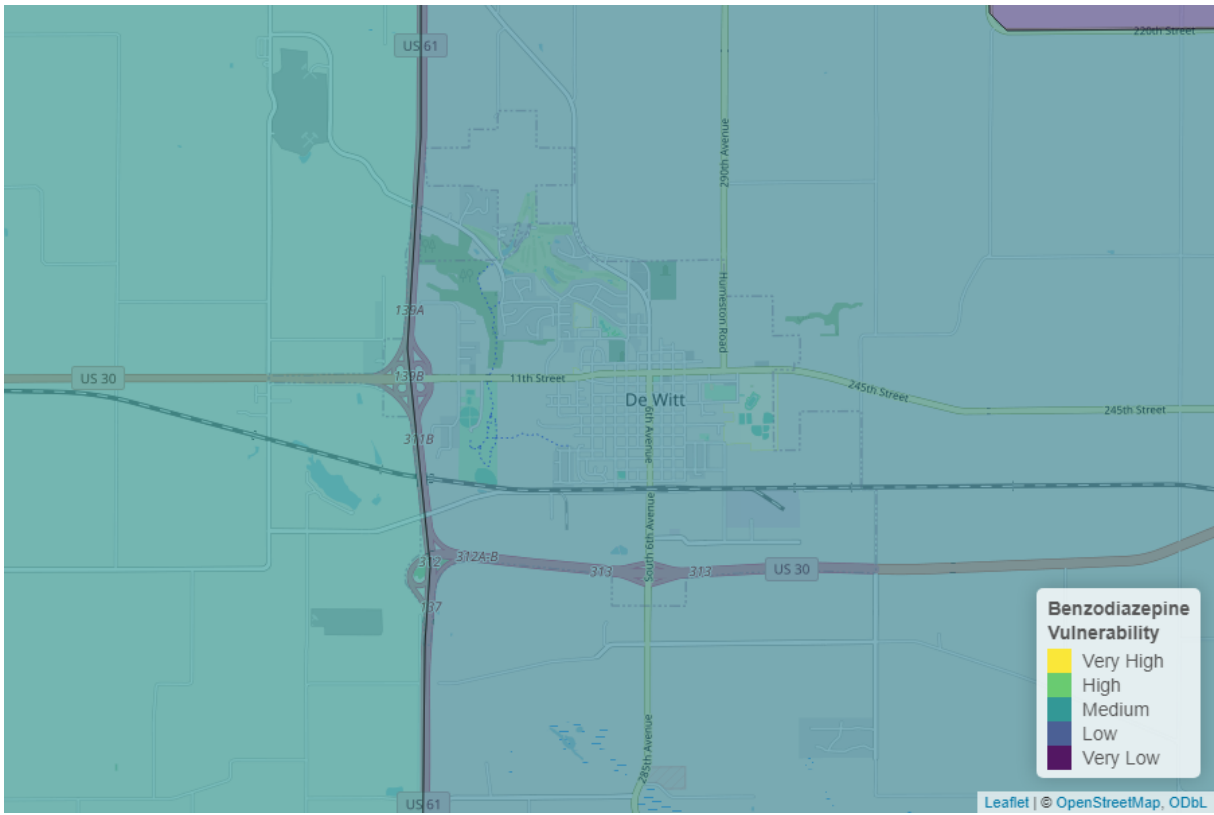


Figure 18: Benzodiazepine Vulnerability in DeWitt

## Social Determinants of Health

In addition to the neighborhood vulnerability maps above, the Public Science Collaborative created a neighborhood map to understand health disparities in DeWitt that draws on well-established social determinants of health. By social determinants, we refer to social and environmental risks that can affect someone's overall health and well-being. For example, in places with high average levels of education and low unemployment rates, residents tend also to have better overall health (e.g. longer life span and more healthy years of living). In places where average incomes are low and the rates of single parenting are high, people often have worse health, including higher death rates due to overdose and fewer healthy days. Knowing something about where the social determinants of health support well-being and where their scarcity decreases well-being can help local community organizations and governments to target better investments to reduce health disparities between neighborhoods. You can interactively explore social determinants of health across the state and look at individual components on [PSC's SDOH Dashboard](#).<sup>6</sup>

Our index of social determinants of health looks at overall health vulnerability, education, health insurance coverage, English proficiency, unemployment, and poverty. According to the social determinants we considered, lack of insurance is the biggest risk factor for poor health in DeWitt. Overall, health risks in DeWitt are about equal to the average for communities in Iowa.

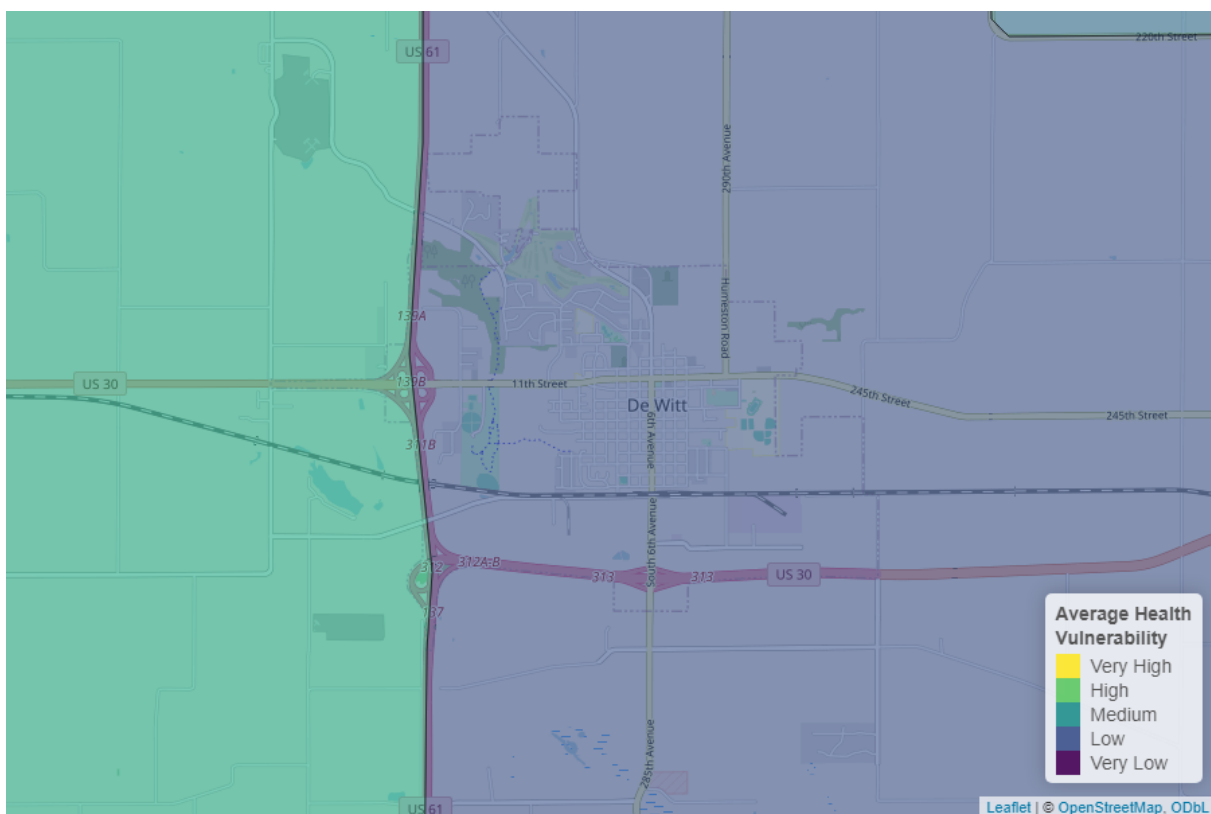


Figure 19: Overall Health Vulnerability in DeWitt

<sup>6</sup><https://publicsciencecollaborative.shinyapps.io/sdoh/>

## Appendix 1: Data Used in this Report

The data used in this report is a variety of recovery, community, and well-being resources that can be useful to individuals in recovery. To collect this data, we used various public resources, including government agencies and recovery websites. The data sources can be found in the table below. Our collection of data may not cover every single resource in Iowa, but it represents the primarily publicly available data found through our research and following the advice of substance use experts and researchers. This data was acquired through several means, including simple downloads, manual data entry, computer reading of PDF files, scraping websites, and utilization of APIs. There are also several resource finder tools to help find a specific resource in an area, including the [Recovery Resource Finder](#),<sup>7</sup> [Well-Being Resource Finder](#),<sup>8</sup> and [Physical Activity Resource Finder](#).<sup>9</sup>

Table 3: Recovery Data Sources

Resource Type	Source
Beach	<a href="#">Iowa DNR</a>
Library	<a href="#">Institute of Museum and Library Services</a>
Playground	<a href="#">OpenStreetMap</a>
Public Park	<a href="#">OpenStreetMap</a>
Trail	<a href="#">OpenStreetMap</a>
Outdoor Basketball Court	<a href="#">OpenStreetMap</a>
Football Field	<a href="#">OpenStreetMap</a>
Soccer Field	<a href="#">OpenStreetMap</a>
Baseball/Softball Diamond	<a href="#">OpenStreetMap</a>
Tennis Court	<a href="#">OpenStreetMap</a>
Pickleball Court	<a href="#">OpenStreetMap</a>
Outdoor Volleyball Court	<a href="#">OpenStreetMap</a>
Other Sports Facilities	<a href="#">OpenStreetMap</a>
Family Support Specialist	<a href="#">Wellpoint Peer Support Inventory</a>
Mutual Aid Meeting	<a href="#">Various Websites</a>
Peer Support Provider	<a href="#">Wellpoint Peer Support Inventory</a>
Recovery Organizations (Community and Collegiate)	<a href="#">Manual Addition</a>
SUD Recovery Coach	<a href="#">Wellpoint Peer Support Inventory</a>
Lake	<a href="#">Iowa DNR</a>
Access Center	<a href="#">Manual Addition</a>
Drug Drop-off Site	<a href="#">Iowa Geodata</a>
Hospital	<a href="#">Iowa Medicaid Provider Search</a>
MAT Site	<a href="#">SAMHSA</a>
Mental & Behavioral Health Center	<a href="#">Iowa DHHS</a>
Rural Health Clinic	<a href="#">Iowa Association of Rural Health Clinics</a>
SUD or Gambling Treatment Center	<a href="#">Iowa DHHS</a>
VA Hospital or Clinic	<a href="#">U.S. Department of Veterans Affairs</a>
YMCA	<a href="#">Heartland YMCA Alliance</a>
Childcare Provider	<a href="#">Iowa DHHS</a>
Recovery Housing	<a href="#">Iowa DHHS</a>
Section 8 Housing	<a href="#">U.S. Department of Housing and Urban Development</a>
Shelter	<a href="#">Homeless Shelters Directory</a>
Intimate Partner Violence Program	<a href="#">Iowa Coalition Against Domestic Violence</a>
Workforce Development Office	<a href="#">Iowa Workforce Development</a>
College or University	<a href="#">Wikipedia</a>
School	<a href="#">Iowa Department of Education</a>
Place of Worship	<a href="#">ExpertGPS.com</a>
State Park	<a href="#">Iowa DNR</a>

<sup>7</sup><http://public-science.org/recoveryresources>

<sup>8</sup><http://public-science.org/communityresources>

<sup>9</sup><http://public-science.org/physicalactivity>

---

## Appendix 2: Mutual Aid Meetings Near DeWitt

Table 4: Mutual Aid Meetings in DeWitt

Meeting Type	Group	Address	Weekly Meeting #
Alcoholics Anonymous	<a href="#">De Witt Group</a>	816 6th Ave, DeWitt, IA 52742, USA	7
Al-Anon	Central Community AFG	818 6th Ave, De Witt, IA, 52742, USA	1

## Appendix 3: Resources Near DeWitt

Table 5: Recovery Resources in DeWitt

Resource Type	Name	Address
Baseball/Softball Diamond	11 Baseball/Softball Diamonds	DeWitt, Clinton County, Iowa, 52742, United States
Outdoor Basketball Court	2 Outdoor Basketball Courts	DeWitt, Clinton County, Iowa, 52742, United States
Beach	Malone Park Beach	US 30, De Witt, IA 52742
Childcare Provider	<a href="#">APK Early Learning Academy - Dewitt</a>	1300 8th AVE, Dewitt, IA, 52742
Childcare Provider	<a href="#">Grace Lutheran Preschool</a>	415 10th St, De Witt, IA, 52742
Childcare Provider	<a href="#">Kids Business Of Dewitt</a>	1313 Maynard Way, Dewitt, IA, 52742
Childcare Provider	<a href="#">Lori Stamp and Abigail Arndt</a>	907 12th ST, Dewitt, IA, 52742
Childcare Provider	<a href="#">Samantha Hendricks</a>	328 3rd AVE, De Witt, IA, 52742
Drug Drop-off Site	DeWitt Police Department	606 9th St, DeWitt, IA, 52742
Drug Drop-off Site	Scott's Thrifty White Drug	629 Sixth Avenue, DeWitt, IA, 52742
Football Field	3 Football Fields	DeWitt, Clinton County, Iowa, 52742, United States
Hospital	Genesis Medical Center Dewitt	1118 11th Street, Dewitt, Ia 52742
Lake	Killdeer R.A. Lake	No Address in Data
Library	Dewitt Community Library	917 5th Ave, Dewitt, IA,
Other Sports Facilities	1 Other Sports Facility	DeWitt, Clinton County, Iowa, 52742, United States
Public Park	Ashindel Park	No Address in Data
Public Park	Clinton County Fairgrounds	No Address in Data
Public Park	Dewitt Soccer Field Complex	No Address in Data
Public Park	Kildeer Park	No Address in Data
Public Park	Lincoln Park	No Address in Data
Public Park	Little Trees Park	No Address in Data
Public Park	Malone Park	No Address in Data
Public Park	Paarmann Park	No Address in Data
Public Park	Pool Park	No Address in Data
Public Park	Westbrook Park	No Address in Data
Peer Support Provider	<a href="#">Community Based/Peer Bridger</a>	916 11th St, De Witt, IA 52742
Peer Support Provider	<a href="#">Rhonda's House Peer-run Repsite</a>	De Witt, IA 52742
Place of Worship	Cornerstone Church	No Address in Data
Place of Worship	De Witt Evangelical Free Church	No Address in Data
Place of Worship	De Witt Lutheran Fellowship	No Address in Data
Place of Worship	First Baptist Church	No Address in Data
Place of Worship	First Congregational United Church	No Address in Data
Place of Worship	Grace Lutheran Church	No Address in Data
Place of Worship	Jehovahs Witnesses Congregation	No Address in Data
Place of Worship	Living Word Bible Church	No Address in Data
Place of Worship	Saint Joseph Church	No Address in Data
Place of Worship	United Methodist Church	No Address in Data
Playground	3 Playgrounds	No Address in Data
Recovery Housing	<a href="#">Life Connections - Rhonda's House</a>	DeWitt, IA 52742
School	Central DeWitt High School	519 E. 11th St., De Witt, IA, 52742
School	Central DeWitt Intermediate School	1010 4th Ave. E., DeWitt, IA, 52742
School	Central DeWitt Middle School	425 E. 11th St., De Witt, IA, 52742
School	Ekstrand Elementary School	1140 15th St, De Witt, IA, 52742
School	St Joseph School	417 6th Ave, De Witt, IA, 52742
Section 8 Housing	United Manor	707 14th St, De Witt, IA, 52742
Soccer Field	3 Soccer Fields	DeWitt, Clinton County, Iowa, 52742, United States
Tennis Court	4 Tennis Courts	DeWitt, Clinton County, Iowa, 52742, United States