



Recovery Readiness Assessment: Burlington

September, 2024



Report provided to the Iowa Department of Health and Human Services

This project is supported by State Opioid Response funds through the Iowa Department of Health and Human Services, Bureau of Substance Use (IowaHHS) via a subaward from the Substance Abuse and Mental Health Services Administration (SAMHSA) of the U.S. Department of Health and Human Services (HHS). The contents are those of the author(s) and do not necessarily represent the official views of, nor an endorsement by, IowaHHS, SAMHSA/HHS, or the U.S. Government.

Table of contents

Overview	2
What is a Recovery-Ready Community?	2
What is Recovery?	2
What is Recovery Readiness?	3
What is a Recovery Community Organization?	3
Is Your Community Recovery Ready?	4
What Are the Resources in Your Community?	5
SAMHSA Dimensions of Recovery Resources	6
Social Determinants of Health Recovery Resources	9
Which Neighborhoods in Your Community Need Additional Health Resources and Support?	12
Substance Use Vulnerability	12
Social Determinants of Health	17
Appendix 1: Data Used in this Report	18
Appendix 2: Mutual Aid Meetings Near Burlington	19
Appendix 3: Resources Near Burlington	20

Overview

At the request of the Iowa Department of Health and Human Services, Bureau of Substance Use, the Public Science Collaborative (PSC) developed community-specific reports to support recovery efforts in Iowa. Recognizing the need to strengthen substance use recovery efforts throughout the state, we identified a large number of existing recovery-oriented resources in Burlington, which we describe and map in the following pages. We developed additional maps to identify at-risk neighborhoods that will benefit from targeted health interventions and additional community resources. For additional questions or information about this report, the data tools described, or the Public Science Collaborative, please reach out to the principal investigators of this study, Dr. Shawn Dorius at sdorius@iastate.edu, or Dr. Cassandra Dorius at cdorius@iastate.edu.

In this report, we define recovery and recovery-ready communities and describe some of the recovery organizations that are emerging across Iowa. We then describe the recovery resources that we collected for your community, providing summary information about where your community has strength and where its resource base can look to grow in the future. We then show you how your community recovery services and resources align with the Substance Abuse and Mental Health Administration (SAMHSA) categories of recovery and where those resources are in your community. We also classified your community assets according to the Centers for Disease Control's social determinants of health framework, which can be useful as you think holistically about the health and well-being of people living there.

We have added two other sets of data and maps in this report that might be helpful in your recovery readiness planning. The first is a set of maps that identify substance use vulnerability for census tracts in your community. These can be helpful in knowing what kinds of substances people are most likely to be recovering from in your community, where to marshal resources and efforts to support at-risk neighborhoods, and where to plan events that meet people where they are. A second set of data and maps project neighborhood-level scores for a community health index that measures the social determinants of health problems. This index is designed to help practitioners and local community groups better understand neighborhoods that could use extra support, resources, and investments to improve the health and well-being of individuals and families.

What is a Recovery-Ready Community?

What is Recovery?

The Iowa Department of Health and Human Services and the Substance Abuse and Mental Health Services Administration (SAMHSA) use the following working definition:

"A process of change through which individuals improve their health and wellness, live a self-directed life, and strive to reach their full potential."

A second useful definition of recovery that has influenced the PSC approach to recovery community readiness was developed by Bill White:

"Recovery is the experience through which individuals, families, and communities impacted by severe alcohol and other drug (AOD) problems utilize internal and external resources to voluntarily resolve these problems, heal the wounds inflicted by AOD-related problems, actively manage their continued vulnerability to such problems, and develop a healthy, productive, and meaningful life."

Common to both definitions is that recovery is not a state or moment in life, but a process of moving toward better health in an actively managed and self-directed way. Recovery takes time and often involves not just the individual, but family and community. For this reason, the external resources noted in the White definition are what motivate our emphasis on recovery-ready communities. Resources outside of the individual, including housing, transportation, recreation, alcohol advertising, and schools, can lead to an early onset of recovery, longer recovery, and more stable recovery. One way these external resources contribute to recovery is through their impact on individual recovery capital. If we knew which resources were most helpful to long-run recovery, we could target towns and cities with large stocks of 'recovery resources' to grow Recovery Community Centers.

What is Recovery Readiness?

A recovery-ready community provides a comprehensive and supportive environment for individuals recovering from substance use disorders (SUD). This includes a continuum of care that spans prevention, treatment, and long-term recovery support. Key elements include accessible healthcare, peer support networks, educational and employment opportunities, harm reduction services, anti-stigma initiatives, and a sense of purpose. By fostering collaboration among community members, institutions, and policymakers, a recovery-ready community aims to create a nurturing ecosystem that promotes sustained recovery and overall well-being.

In Iowa, a recovery-ready community supports multiple recovery pathways, meets the needs of its recovery population, is integrated and coordinated across the formal and informal recovery-oriented system of care, and has a vibrant recovery culture.

What is a Recovery Community Organization?

Recovery organizations are groups or institutions that support individuals recovering from substance use disorders. While recovery organizations come in many forms, they share a common commitment to providing a range of services and resources to help people sustain their recovery, improve their health and well-being, and reintegrate into society. Most community-based recovery organizations will offer some form of peer support, either in the form of peer support specialists, recovery coaches, or mutual aid meetings, and a range of activities and services to grow community and connection among people in recovery. These organizations also offer a substance-free environment where all are welcome and people in recovery can receive guidance in daily living activities such as finding stable housing, a job, volunteer opportunities, recreation and social groups, and linkages to legal support, for example. A few of the most well-known recovery organizations include:

- **Recovery Houses:** These are safe, substance-free living environments that support people in recovery from substance use disorders. Most recovery houses provide a structured and supportive community where residents can focus on their recovery journey and live among other people in recovery. Oxford Houses are among the most well-known recovery residences.
- **Recovery Community Centers:** These centers are free, universal access physical spaces that offer a variety of services to support individuals in recovery. A typical recovery community center will host mutual aid meetings, maintain a network of local recovery coaches, engage in community advocacy for people in recovery, and coordinate life-skills training, social activities, employment assistance, housing assistance, and linkages to educational resources. They will also coordinate with first responders, parole officers, and emergency departments to support people with substance use disorders.
- **Recovery Cafes:** These community spaces bring people in recovery together, providing a space to socialize with other people in recovery, support one another, and engage in service. Cafés often provide free hot meals, beverages, and other basic needs to support people in recovery. They might also offer peer support and other activities in a welcoming, substance-free environment. The [Recovery Café Network](https://recoverycafenetwork.org/)¹ is a good starting place to learn more.
- **Recovery High Schools and Collegiate Recovery Programs:** These educational institutions provide a supportive environment for students in recovery, helping them achieve academic success while maintaining their sobriety. They do this in much the same way as community centers and cafes, by offering peer support, community, and recovery-focused activities. Iowa currently has three collegiate recovery programs.

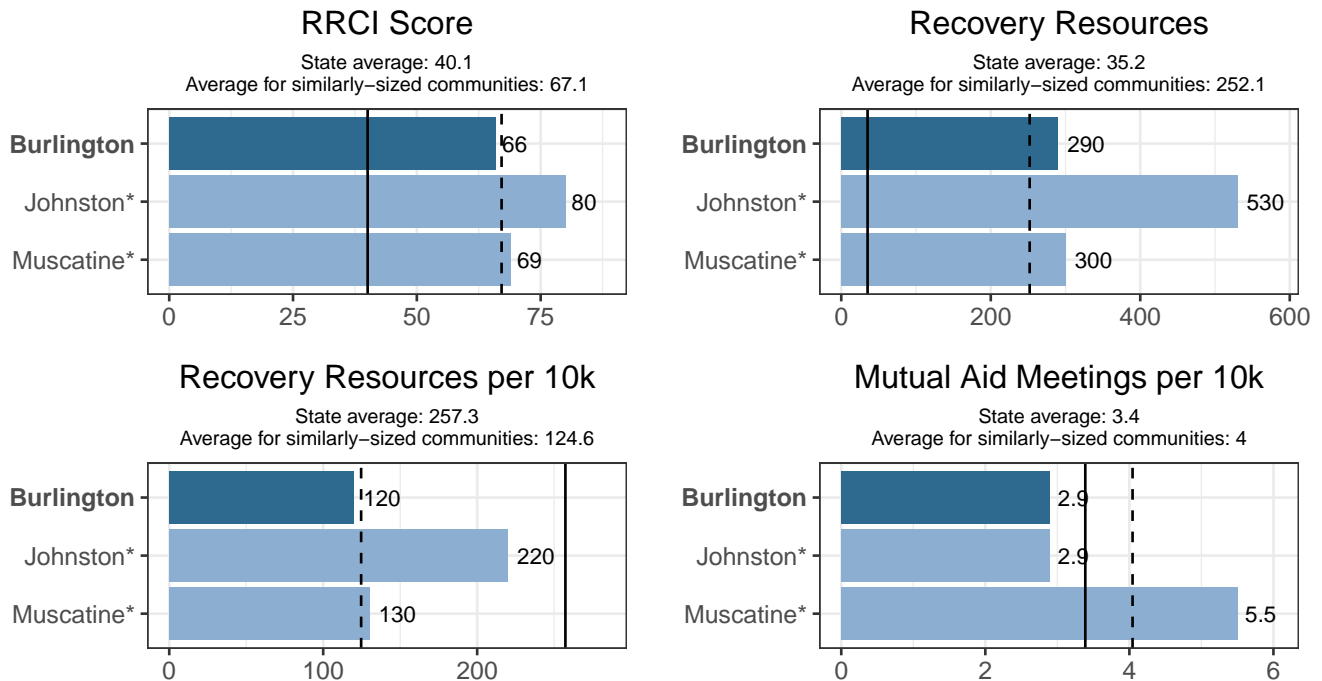
¹<https://recoverycafenetwork.org/>

Is Your Community Recovery Ready?

We consulted scientific literature on substance use recovery and engaged key stakeholders, including people in recovery and individuals from around the country and in Iowa who work directly with recoverees. From these efforts, we identify 24 categories of community-based recovery resources and services. Collecting all of that data for each of Iowa’s cities and towns yielded a total of nearly 40,000 community resources that support recovery. We mapped and analyzed these resources to identify a short list of ‘Recovery Ready’ communities across the state, culminating in the first-of-its-kind index: The Recovery Ready Community Index (RRCI).

The RRCI is comprised of three sub-indices: total number of resources, total resources per 10,000 population, and total mutual aid meetings per 10,000 population (the first two categories include all resources except mutual aid meetings). A community’s score is calculated by its percentile rank among all Iowa communities. For instance, the community with the most resources has a total resources percentile score of 99, while the one with the fewest has a score of 0. A community’s overall recovery readiness score is the average of its percentile ranking across each of the three sub-indices. The Public Science Collaborative designed and created a public-facing, [interactive dashboard](#)² that allows people to further explore the RRCI, compare recovery readiness scores, and evaluate communities.

Figure 1 below displays recovery resources in Burlington compared to the two Iowa cities most similar in population, Johnston and Muscatine, as well as the state average and average for cities in a similar population group (10,000 - 49,999).



* The Iowa cities most comparable to Burlington by population are Johnston and Muscatine.
 ** The solid vertical line represents the average for all 944 communities in Iowa and the dashed vertical line represents the average for Iowa communities with populations of 10,000 – 49,999 people.

Figure 1: Recovery Resources in Burlington

Burlington ranks 17th of 31 on the RRCI in its size category (10,000 - 49,999). In the same population group, Burlington ranks 10th in total resources, 15th in resources per 10,000 people, and 19th in mutual aid meetings per 10,000 people.

In addition to the RRCI, a community might also consider resource diversity. That is, whether Burlington has a wide range of types of resources to support multiple pathways to recovery. On this measure, Burlington has 17 types of non-meeting resources, compared to the average of 13.7 for cities with a population of 10,000 - 49,999.

²<https://publicsciencecollaborative.shinyapps.io/RRCI/>

What Are the Resources in Your Community?

Overall, Burlington has 19 mutual aid meetings and 217 non-meeting recovery resources non-meeting recovery resources. The tables below include data about the specific kinds of mutual aid meetings and other recovery resources available in your community. Appendices 2 and 3 have a full list of these resources. Following the tables, we have prepared maps that break up the data into categories of similar types of resources and show where resources are located in Burlington. These maps can be used to help identify areas that already have plentiful recovery resources and those that have limited resources and may need additional support.

Table 1: Types of Mutual Aid Meetings in Burlington

Meeting Type	Total Meeting Locations	Total Meetings
Alcoholics Anonymous	2	14
Al-Anon	3	3
Celebrate Recovery	1	1
Narcotics Anonymous	1	1

Table 2: Types of Recovery Resources in Burlington

Resource Type	Total Resources
Place of Worship	56
Childcare Provider	53
Baseball/Softball Diamond	19
Tennis Court	18
Public Park	14
School	11
Section 8 Housing	8
Outdoor Volleyball Court	5
Playground	5
Football Field	4
Other Sports Facilities	4
SUD or Gambling Treatment Center	3
Soccer Field	3
College or University	2
Drug Drop-off Site	2
Family Support Specialist	1
Library	1
MAT Site	1
Mental & Behavioral Health Center	1
Outdoor Basketball Court	1
Peer Support Provider	1
SUD Recovery Coach	1
Shelter	1
VA Hospital or Clinic	1
YMCA	1

SAMHSA Dimensions of Recovery Resources

As defined by SAMHSA, recovery is "A process of change through which individuals improve their health and wellness, live self-directed lives, and strive to reach their full potential." Because recovery is holistic and can look different for everybody, the SAMHSA Dimensions of Recovery listed below help identify the different parts of life and the different resources that are useful in supporting recovery. The following maps identify resources in Burlington that fit into each of those dimensions of recovery.

The SAMHSA Dimensions of Recovery include ([Click here for more information](#)³):

- **Community** (Peer Support—Specialists and Coaches, Recovery Organizations—Community and Collegiate, Mutual Aid Meetings, Libraries, Parks and Playgrounds, Lakes and Beaches, Trails, Sports Facilities)
- **Health** (Access Centers, Drug Drop Off Sites, Hospitals and Clinics, MAT Sites, Mental & Behavioral Health Centers, SUD and Gambling Treatment Centers, YMCA Gyms)
- **Home** (Childcare Providers, Recovery Housing, Section Eight Housing, Shelters, Intimate Partner Violence Programs)
- **Purpose** (Workforce Development Offices, Colleges and Universities, K-12 Schools, Places of Worship)

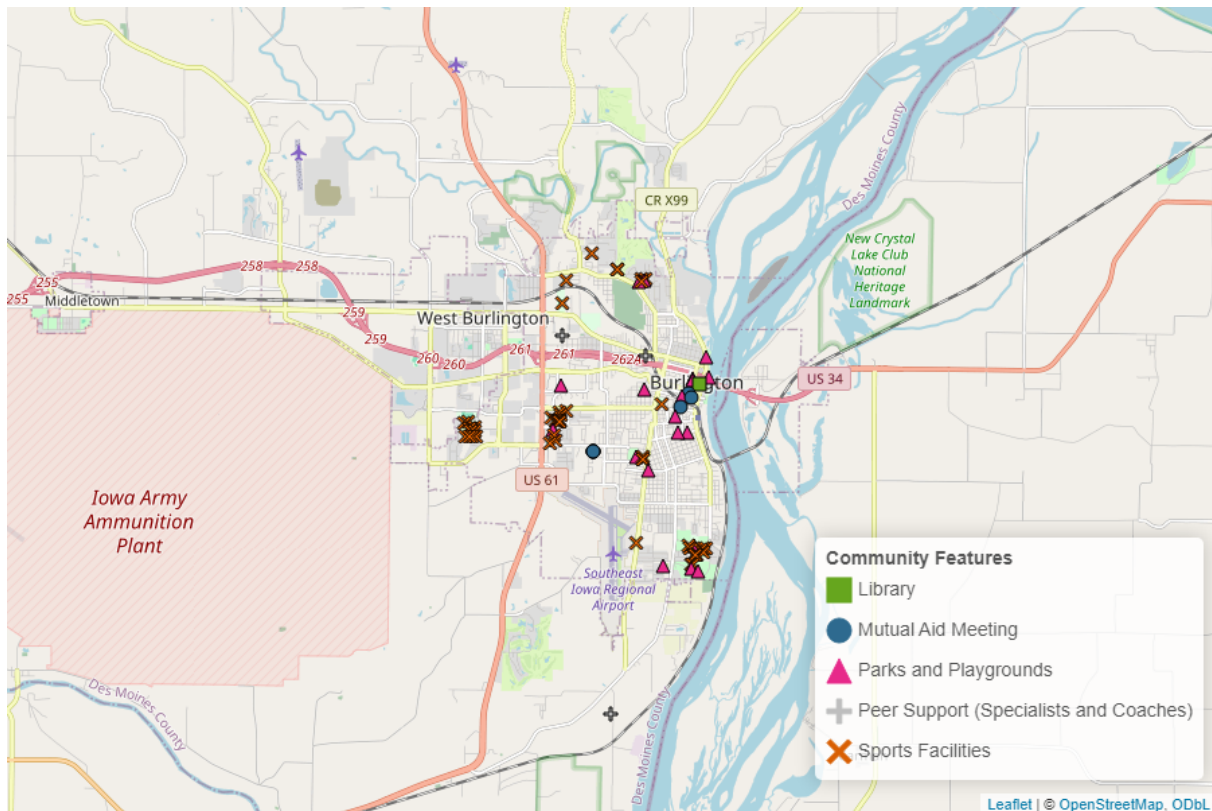


Figure 2: Community Resources in Burlington

³<https://www.samhsa.gov/find-help/recovery>

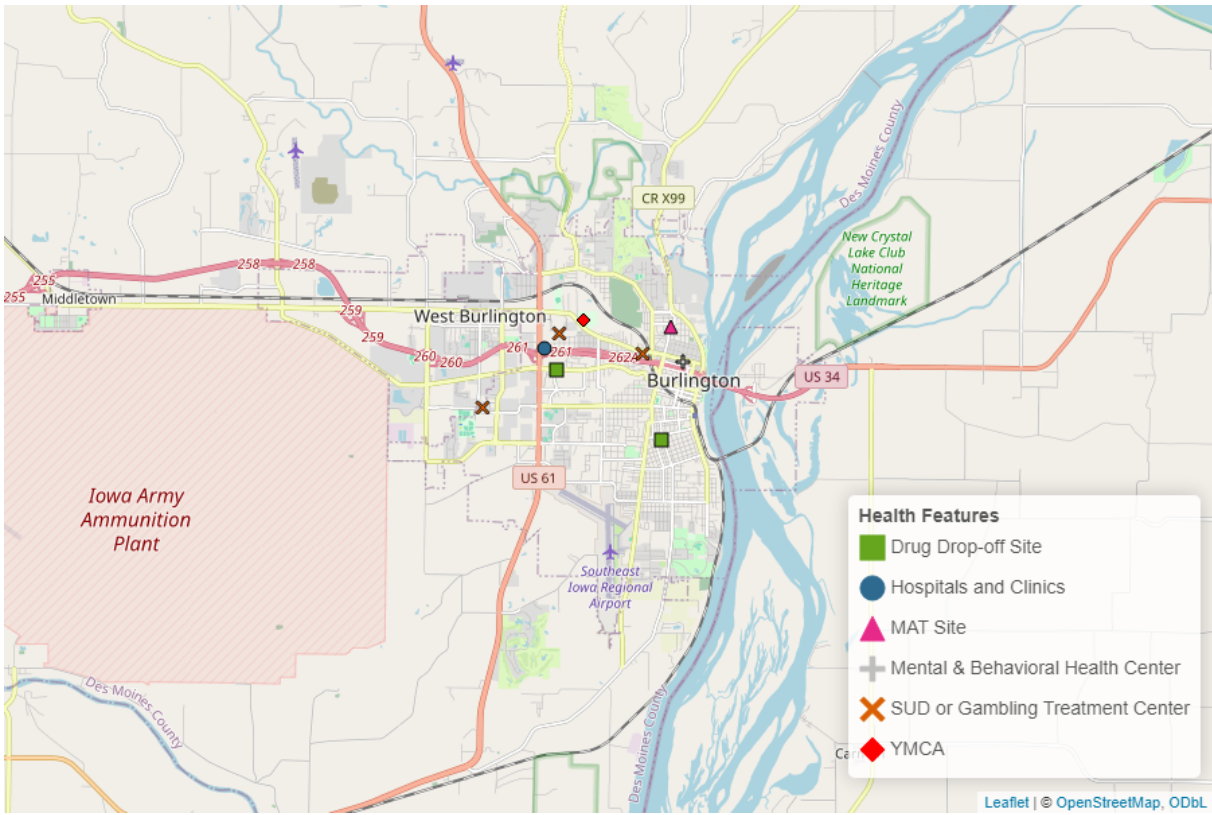


Figure 3: Health Resources in Burlington

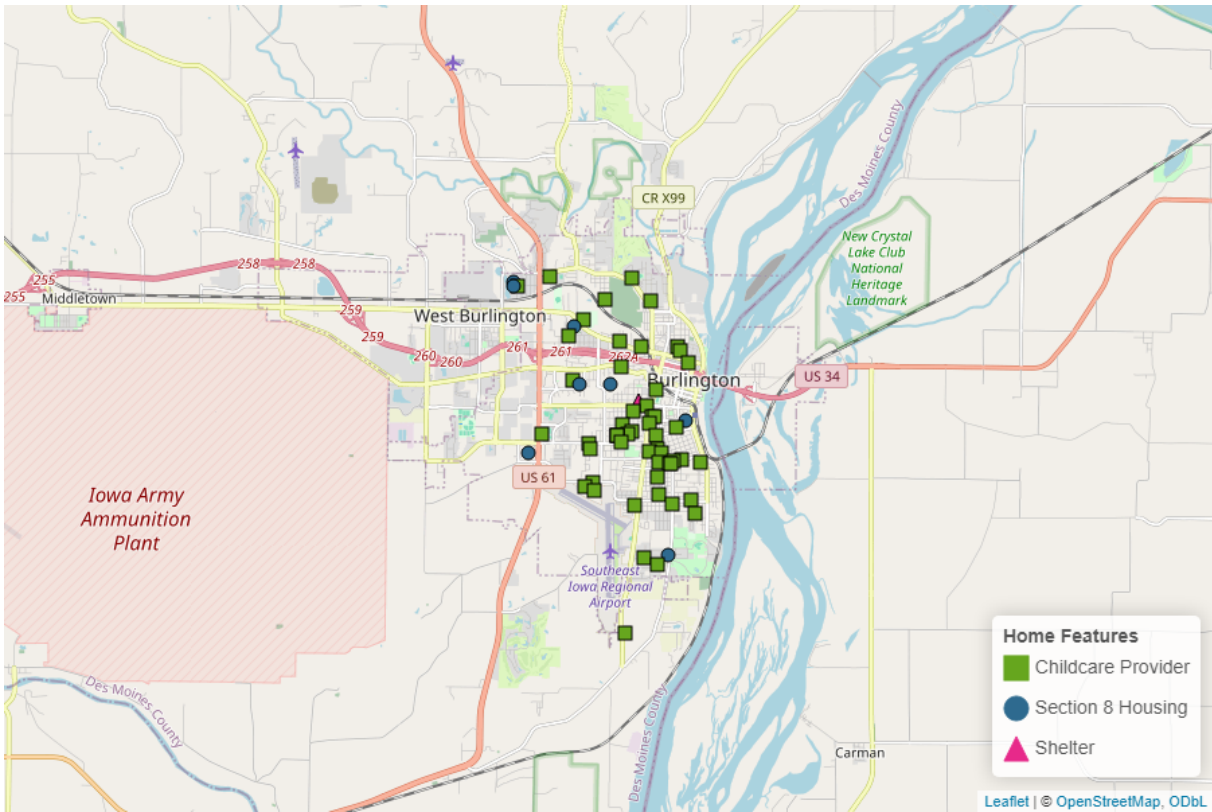


Figure 4: Home Resources in Burlington

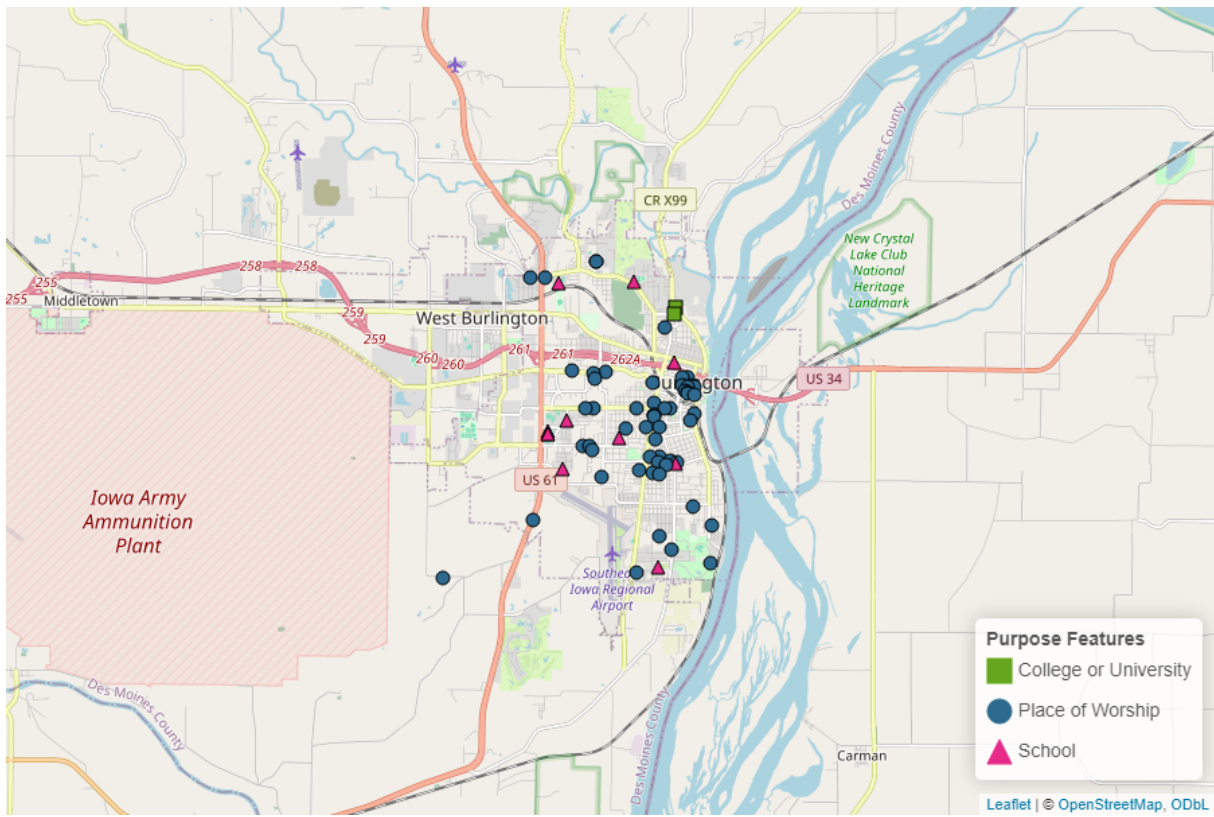


Figure 5: Purpose Resources in Burlington

Social Determinants of Health Recovery Resources

The Social Determinants of Health is an established framework for thinking about the conditions of a person's life that contribute to their overall well-being. For example, a family that living in an area with limited resources supporting families and children (such as childcare providers and parks or playgrounds) may experience other struggles as a result, like increased transportation costs that place stressors on a family's finances. These maps can also be used in conjunction with the population data in the next section to help identify vulnerable populations and neighborhoods. Neighborhoods with health and substance use vulnerabilities may need greater access to specific supporting resources.

The SDOH categories include ([Click here for more information⁴](#)):

- **Health Care Access and Quality** (Access Centers, Drug Drop Off Sites, Hospitals and Clinics, MAT Sites, Mental & Behavioral Health Centers, SUD and Gambling Treatment Centers)
- **Social and Community Context** (Peer Support–Specialists and Coaches, Recovery Organizations–Community and Collegiate, Intimate Partner Violence Programs, Mutual Aid Meetings, Places of Worship)
- **Neighborhood and Built Environment** (Libraries, Parks and Playgrounds, YMCA Gyms, Lakes and Beaches, Trails, Sports Facilities)
- **Education Access and Quality** (Colleges and Universities, K-12 Schools)
- **Economic Stability** (Childcare Providers, Recovery Housing, Section Eight Housing, Shelters, Workforce Development Offices)

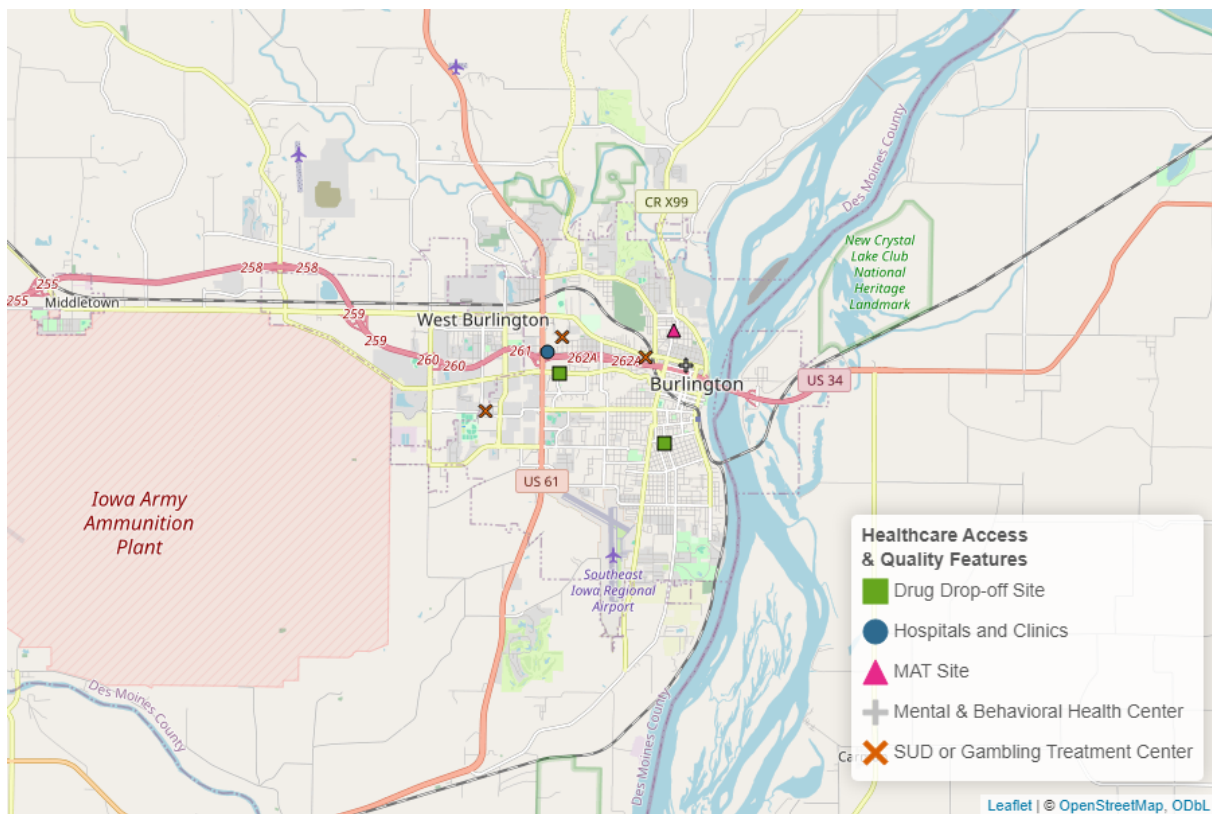


Figure 6: Health Care Access and Quality Resources in Burlington

⁴<https://health.gov/healthypeople/priority-areas/social-determinants-health>

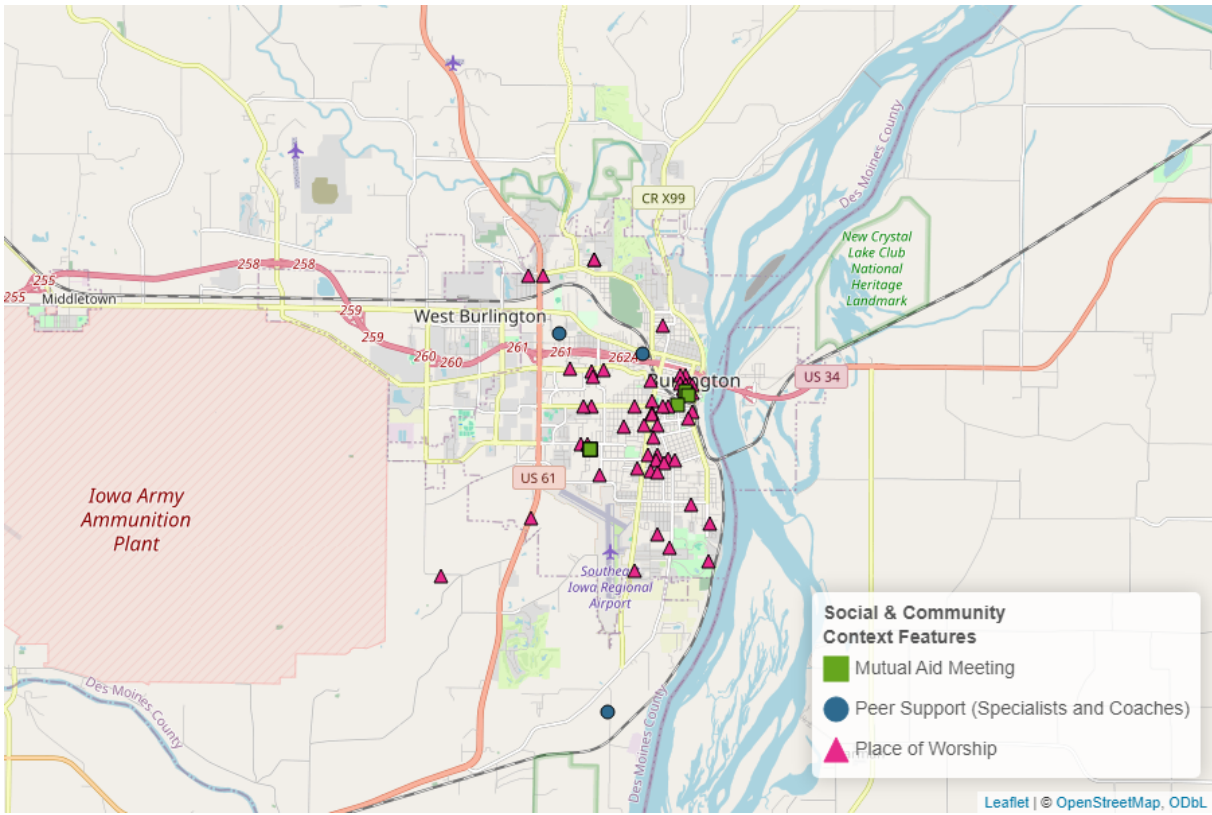


Figure 7: Social and Community Context Resources in Burlington

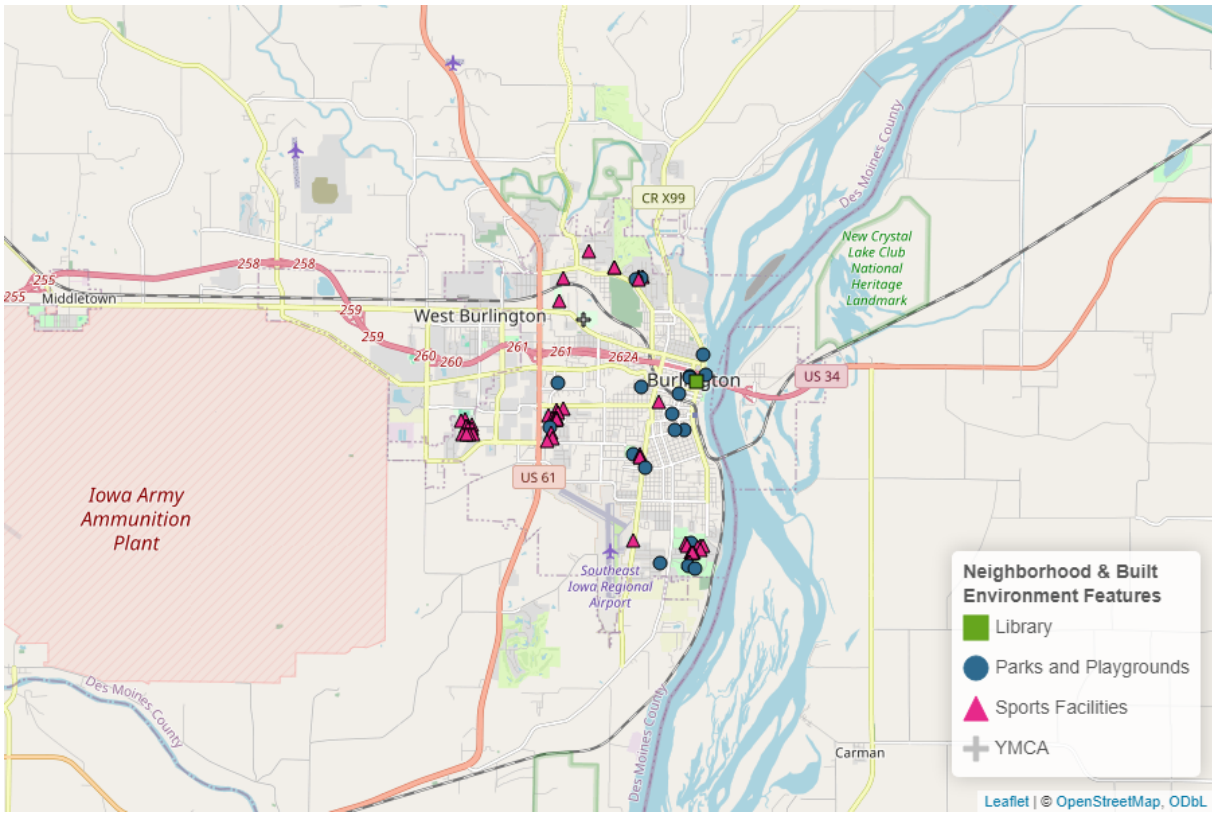


Figure 8: Neighborhood and Built Environment Resources in Burlington

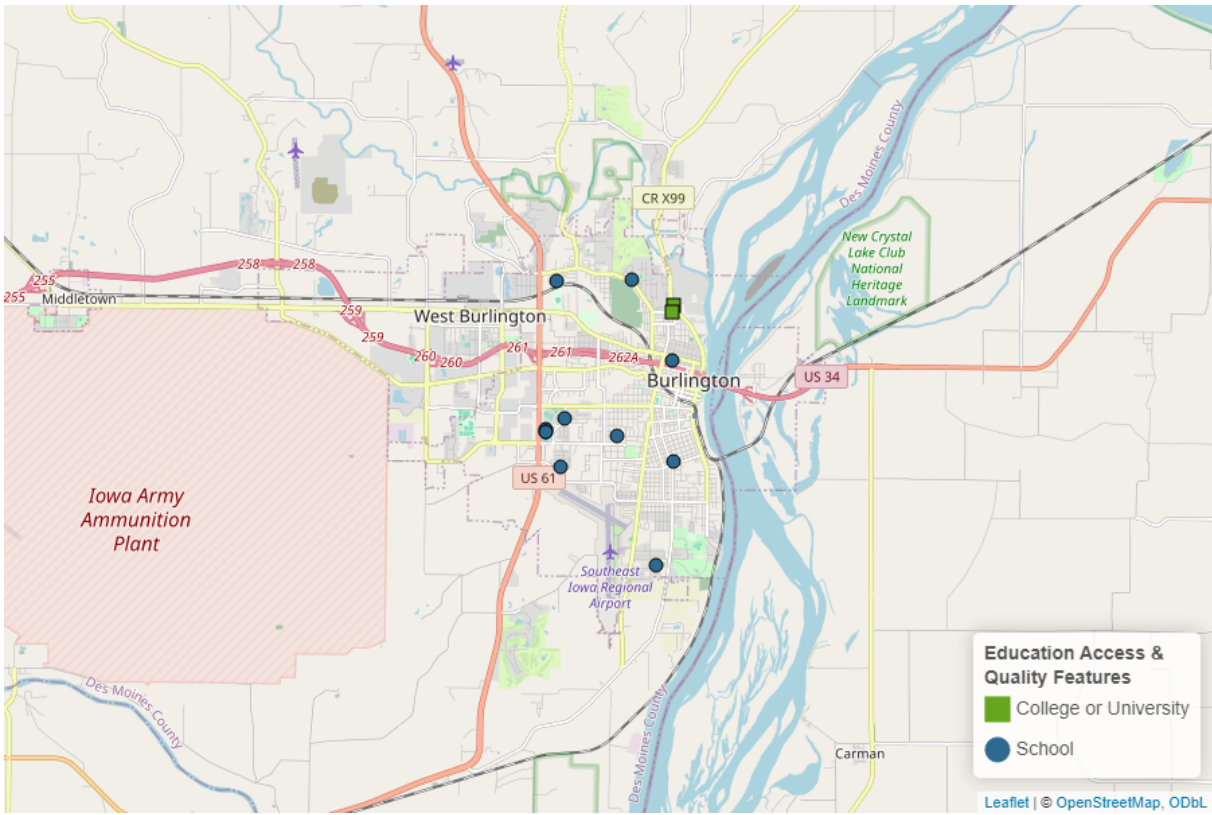


Figure 9: Education Access and Quality Resources in Burlington

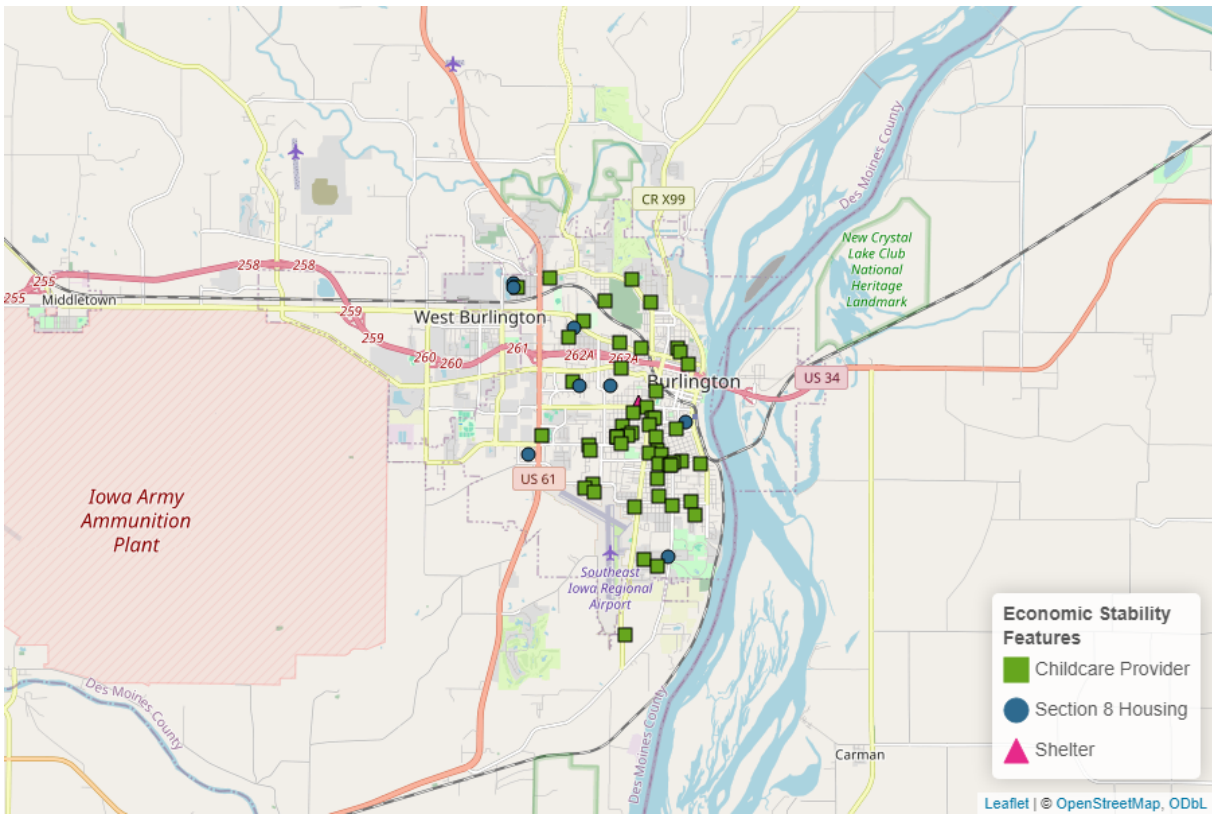


Figure 10: Economic Stability Resources in Burlington

Which Neighborhoods in Your Community Need Additional Health Resources and Support?

Substance Use Vulnerability

The Public Science Collaborative has developed data resources to help community organizations, local governments, and public health practitioners resources more effectively target substance use prevention, treatment, and recovery interventions to the places in greatest need. Geographic ‘hot spots’ identify places where local residents are at exceptionally high risk for substance use disorder. We estimated statistical models using administrative data from the Treatment Episode Admissions Dataset (TEDS-A) and the National Survey of Drug Use and Health (NSDUH) to measure significant relationships between substances of misuse and socio-demographic characteristics known to affect health equity and substance use vulnerability. These maps use Census Bureau estimates of these same neighborhood characteristics, by census tract, to create indexes for each substance. Once mapped, these data help us to identify places with especially high concentrations of at-risk characteristics that need targeted resources to reduce health inequities. You can explore the maps interactively and learn more about the underlying models on PSC’s [dashboard for substance use vulnerability](#).⁵

Identification of towns and neighborhoods with exceptionally high (or low) risk of harmful use of a specific substance can guide public health outreach efforts and enable more targeted, substance-specific interventions based on known neighborhood risk factors. To assist in this work, the following pages include substance use vulnerability maps for overall substance use, opioids, methamphetamine, heroin, alcohol, cannabis, cocaine, and benzodiazepines.

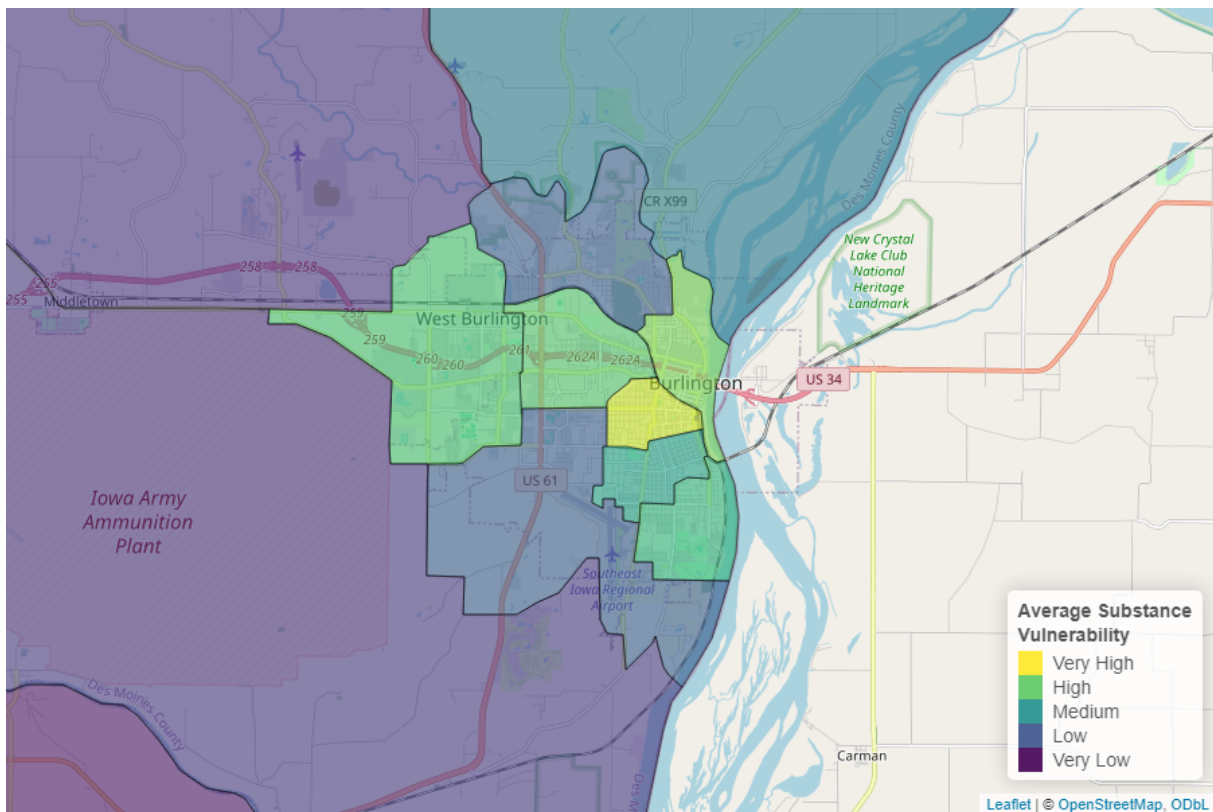


Figure 11: Overall Substance Use Vulnerability in Burlington

Overall substance use vulnerability varies by neighborhood in Burlington, but is generally about equal to other communities in Iowa. Due to neighborhood vulnerability, specific neighborhoods may benefit from a targeted approach rather than community-wide efforts. Community-wide vulnerability was highest for cannabis, and a breakdown for each substance is shown in the figures below.

⁵https://publicsciencecollaborative.shinyapps.io/substance_use_vulnerability/

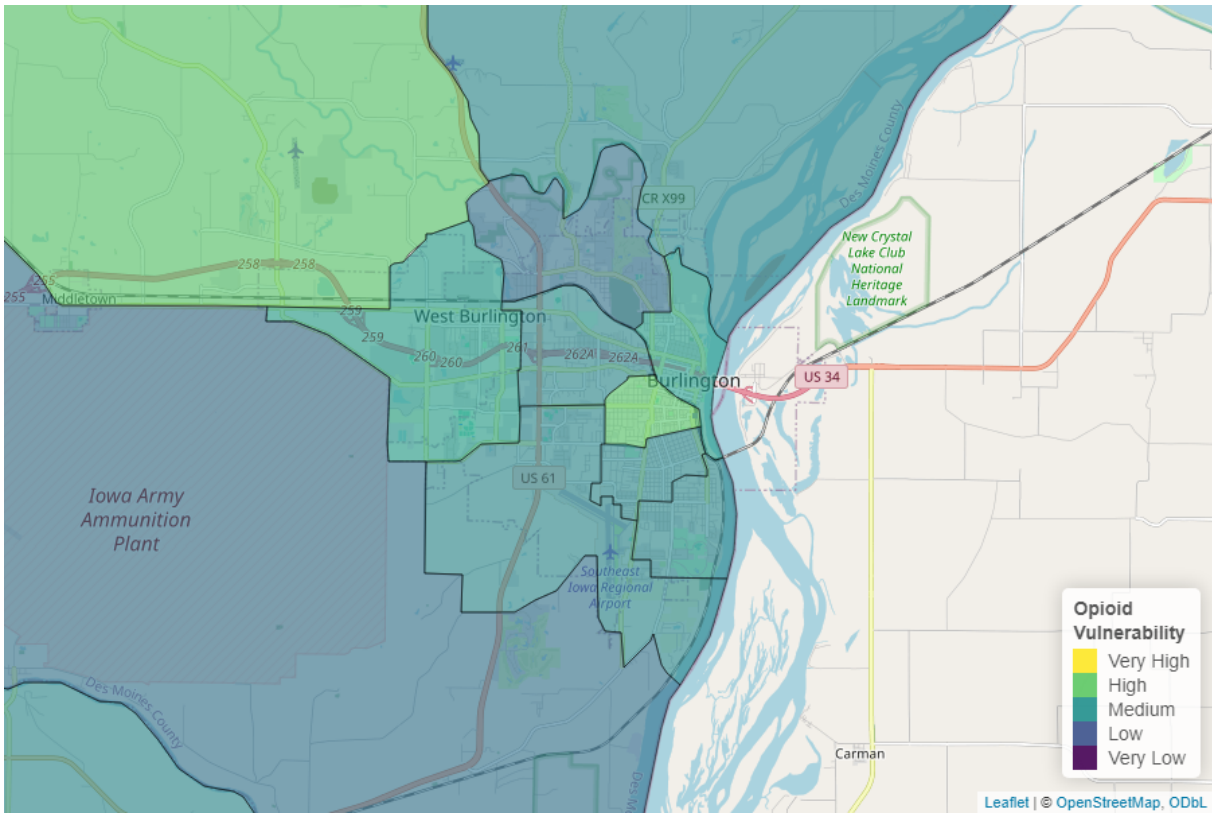


Figure 12: Opioid Vulnerability in Burlington

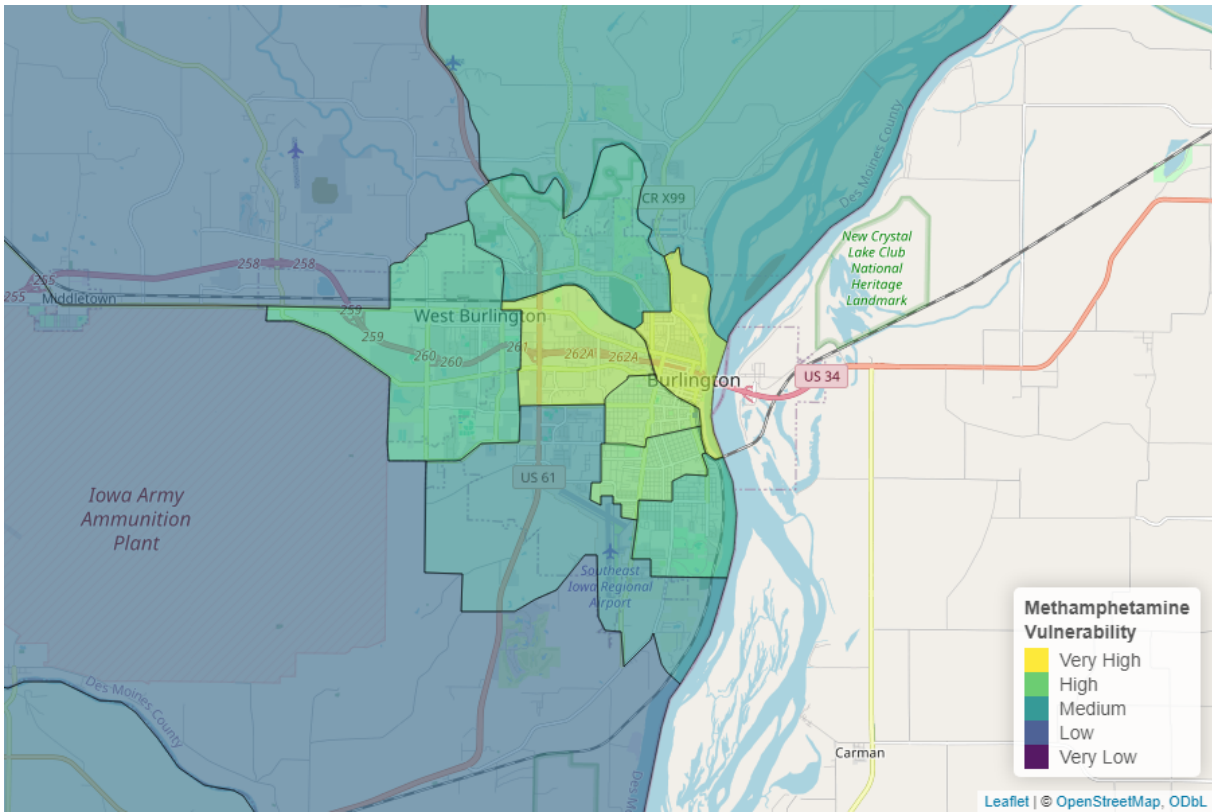


Figure 13: Methamphetamine Vulnerability in Burlington

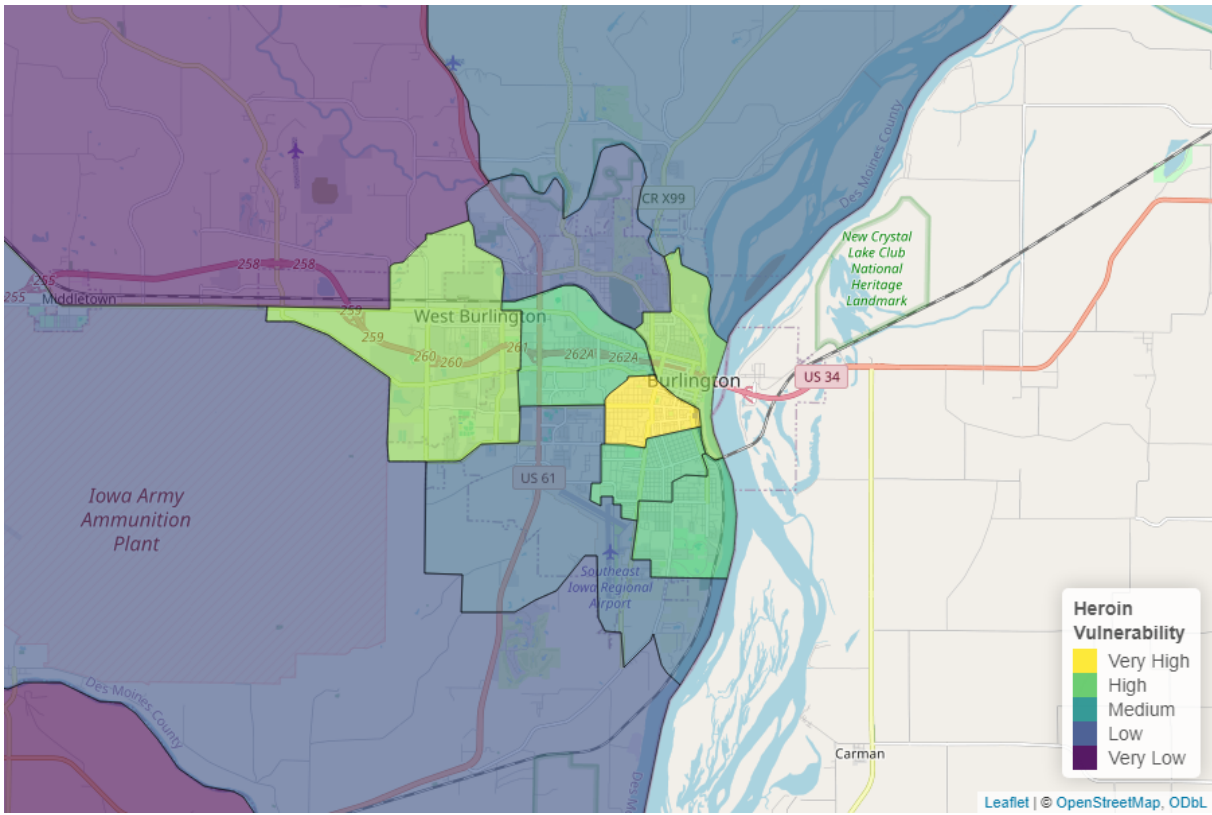


Figure 14: Heroin Vulnerability in Burlington

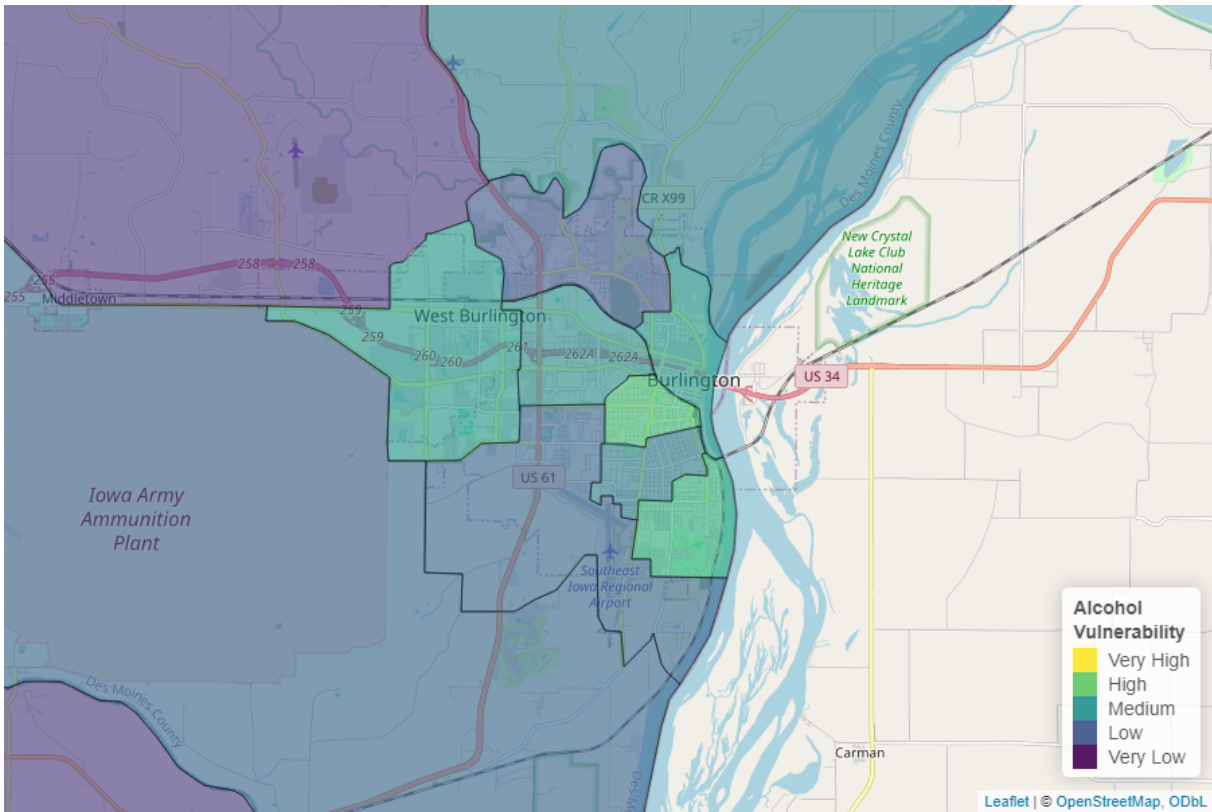


Figure 15: Alcohol Vulnerability in Burlington

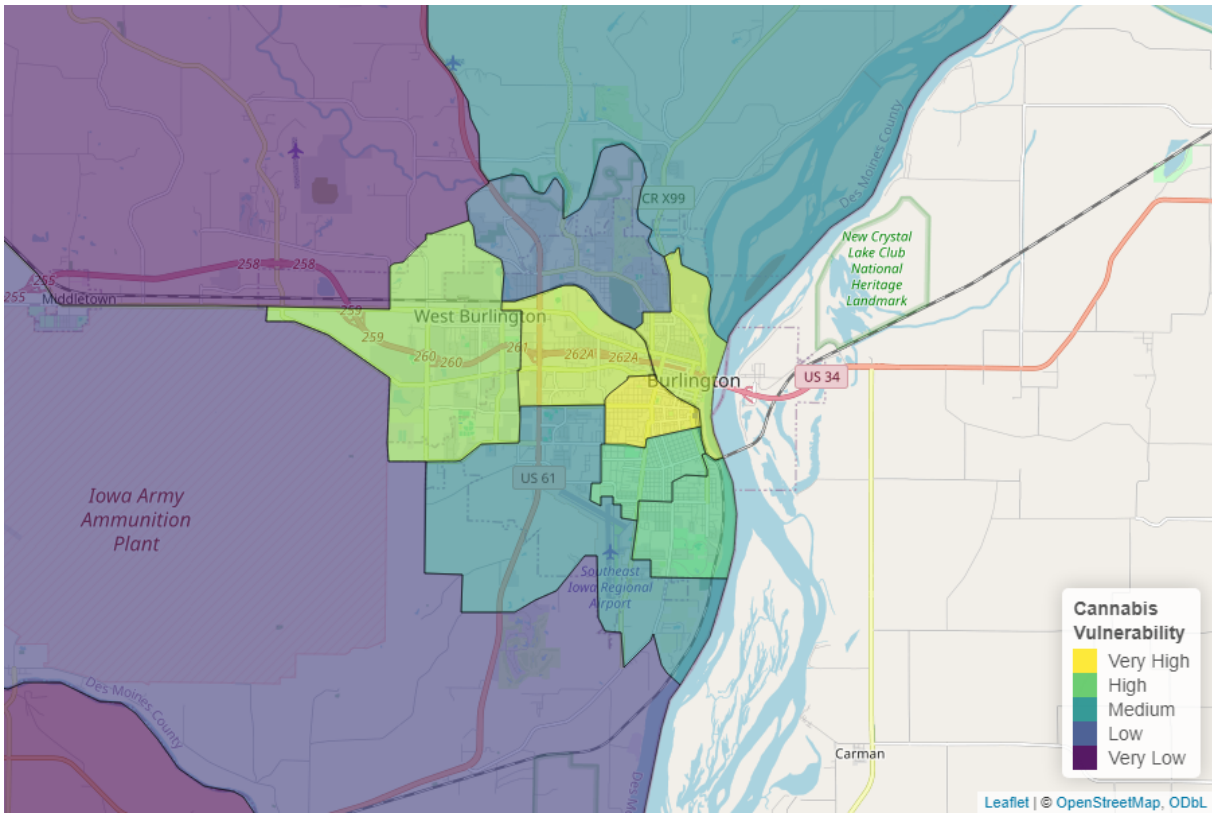


Figure 16: Cannabis Vulnerability in Burlington

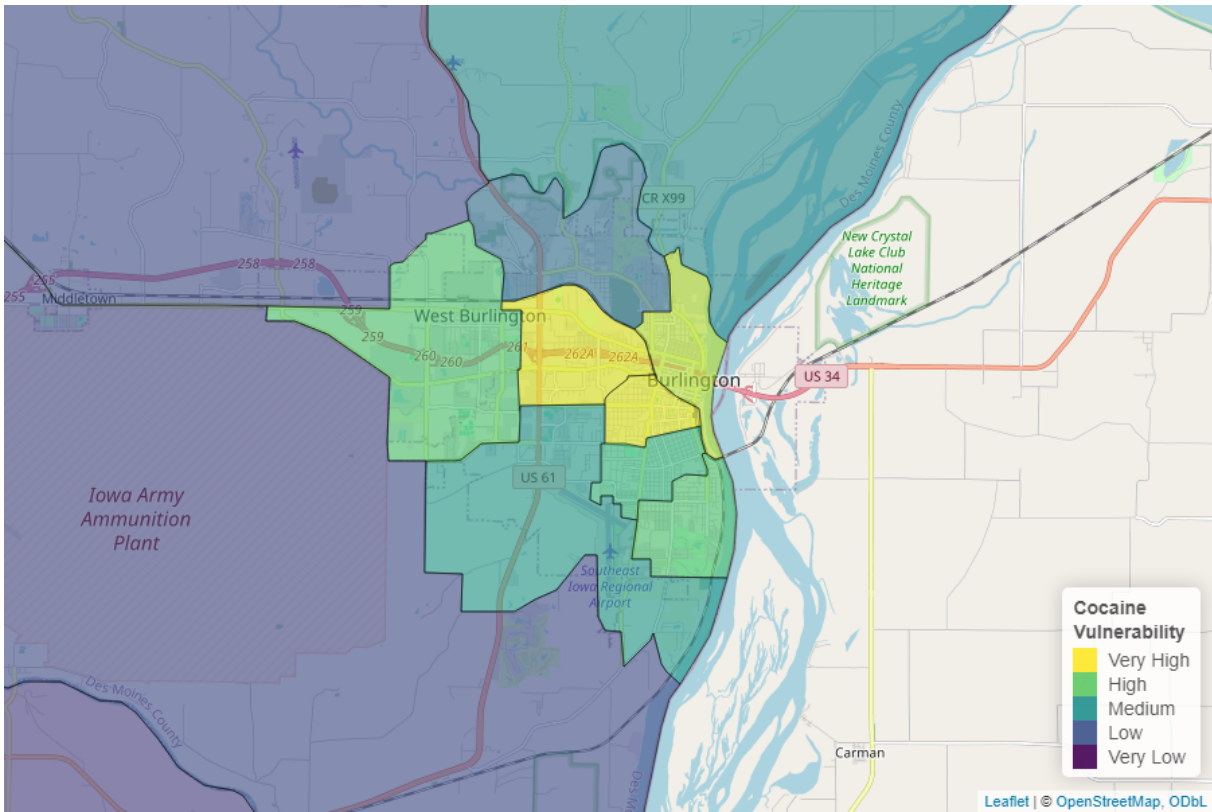


Figure 17: Cocaine Vulnerability in Burlington

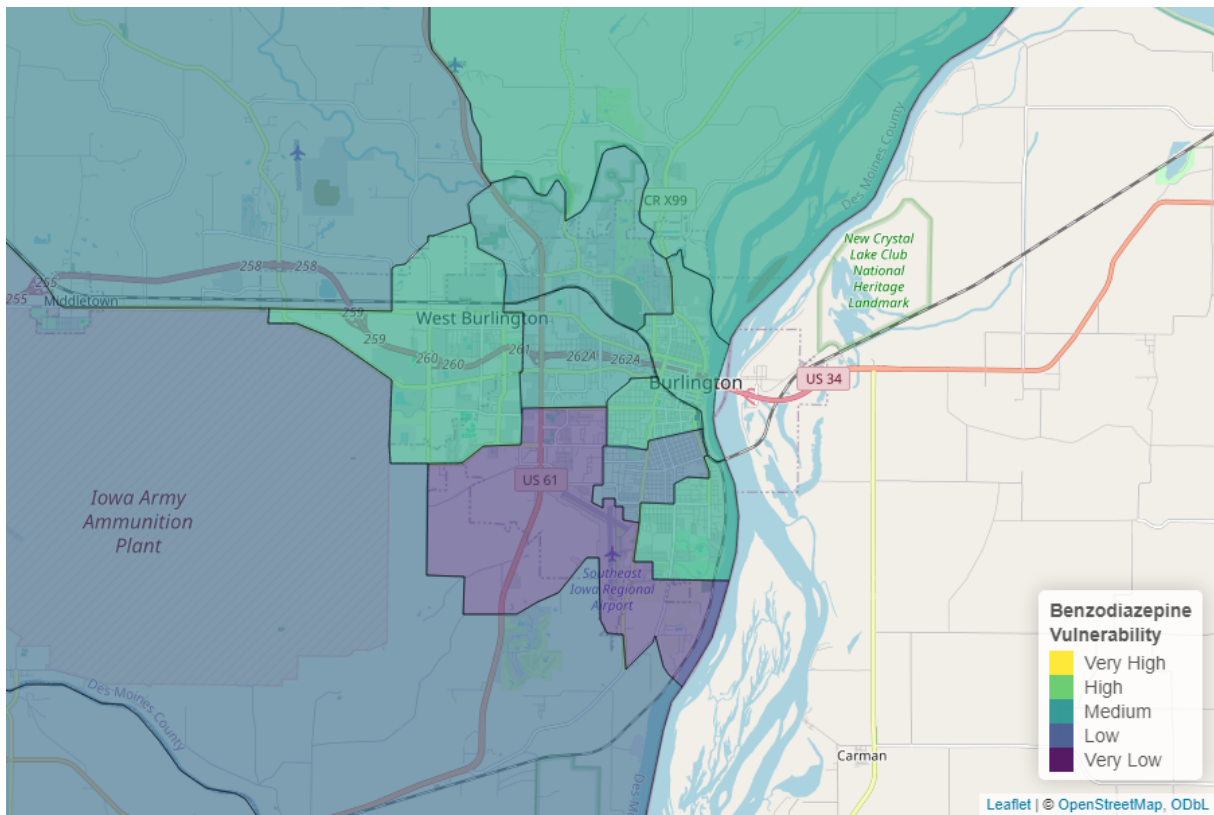


Figure 18: Benzodiazepine Vulnerability in Burlington

Social Determinants of Health

In addition to the neighborhood vulnerability maps above, the Public Science Collaborative created a neighborhood map to understand health disparities in Burlington that draws on well-established social determinants of health. By social determinants, we refer to social and environmental risks that can affect someone's overall health and well-being. For example, in places with high average levels of education and low unemployment rates, residents tend also to have better overall health (e.g. longer life span and more healthy years of living). In places where average incomes are low and the rates of single parenting are high, people often have worse health, including higher death rates due to overdose and fewer healthy days. Knowing something about where the social determinants of health support well-being and where their scarcity decreases well-being can help local community organizations and governments to target better investments to reduce health disparities between neighborhoods. You can interactively explore social determinants of health across the state and look at individual components on [PSC's SDOH Dashboard](#).⁶

Our index of social determinants of health looks at overall health vulnerability, education, health insurance coverage, English proficiency, unemployment, and poverty. According to the social determinants we considered, poverty is the biggest risk factor for poor health in Burlington. Overall, health risks in Burlington are about equal to the average for communities in Iowa.

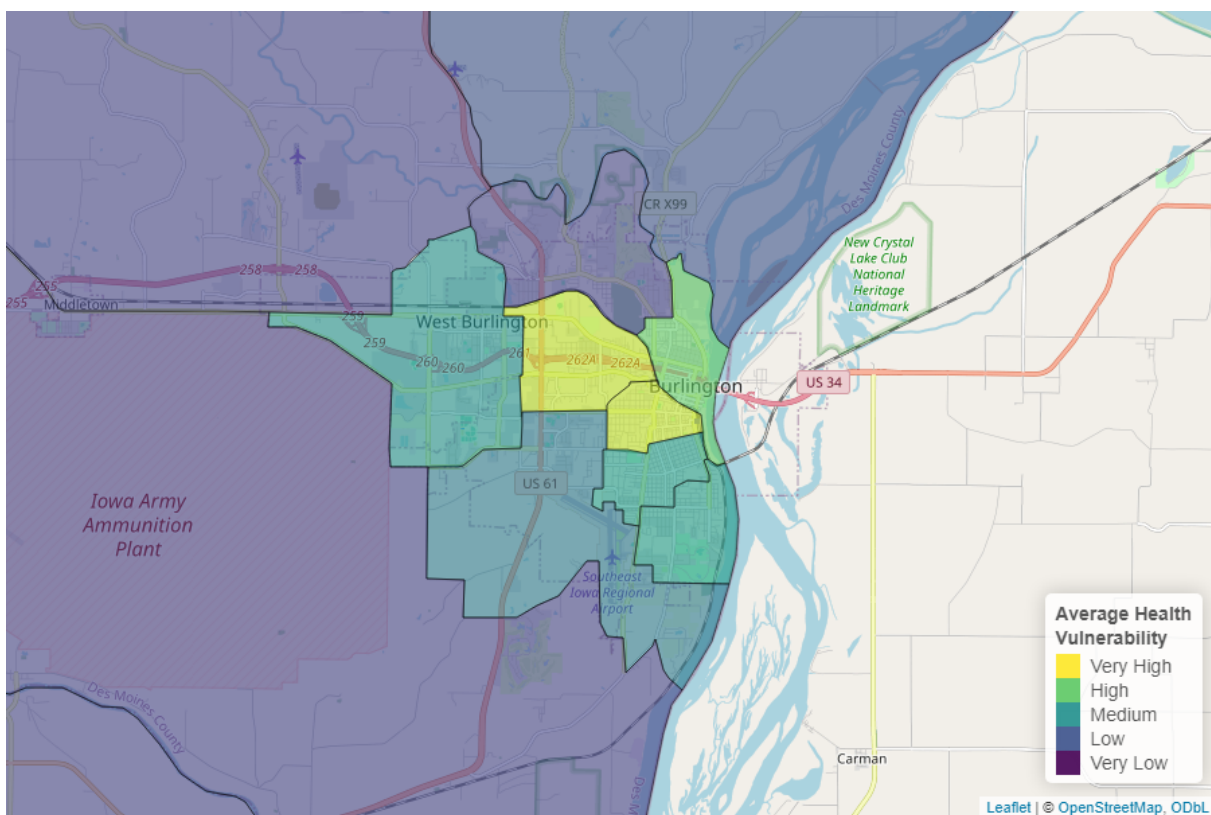


Figure 19: Overall Health Vulnerability in Burlington

⁶<https://publicsciencecollaborative.shinyapps.io/sdoh/>

Appendix 1: Data Used in this Report

The data used in this report is a variety of recovery, community, and well-being resources that can be useful to individuals in recovery. To collect this data, we used various public resources, including government agencies and recovery websites. The data sources can be found in the table below. Our collection of data may not cover every single resource in Iowa, but it represents the primarily publicly available data found through our research and following the advice of substance use experts and researchers. This data was acquired through several means, including simple downloads, manual data entry, computer reading of PDF files, scraping websites, and utilization of APIs. There are also several resource finder tools to help find a specific resource in an area, including the [Recovery Resource Finder](#),⁷ [Well-Being Resource Finder](#),⁸ and [Physical Activity Resource Finder](#).⁹

Table 3: Recovery Data Sources

Resource Type	Source
Beach	Iowa DNR
Library	Institute of Museum and Library Services
Playground	OpenStreetMap
Public Park	OpenStreetMap
Trail	OpenStreetMap
Outdoor Basketball Court	OpenStreetMap
Football Field	OpenStreetMap
Soccer Field	OpenStreetMap
Baseball/Softball Diamond	OpenStreetMap
Tennis Court	OpenStreetMap
Pickleball Court	OpenStreetMap
Outdoor Volleyball Court	OpenStreetMap
Other Sports Facilities	OpenStreetMap
Family Support Specialist	Wellpoint Peer Support Inventory
Mutual Aid Meeting	Various Websites
Peer Support Provider	Wellpoint Peer Support Inventory
Recovery Organizations (Community and Collegiate)	Manual Addition
SUD Recovery Coach	Wellpoint Peer Support Inventory
Lake	Iowa DNR
Access Center	Manual Addition
Drug Drop-off Site	Iowa Geodata
Hospital	Iowa Medicaid Provider Search
MAT Site	SAMHSA
Mental & Behavioral Health Center	Iowa DHHS
Rural Health Clinic	Iowa Association of Rural Health Clinics
SUD or Gambling Treatment Center	Iowa DHHS
VA Hospital or Clinic	U.S. Department of Veterans Affairs
YMCA	Heartland YMCA Alliance
Childcare Provider	Iowa DHHS
Recovery Housing	Iowa DHHS
Section 8 Housing	U.S. Department of Housing and Urban Development
Shelter	Homeless Shelters Directory
Intimate Partner Violence Program	Iowa Coalition Against Domestic Violence
Workforce Development Office	Iowa Workforce Development
College or University	Wikipedia
School	Iowa Department of Education
Place of Worship	ExpertGPS.com
State Park	Iowa DNR

⁷<http://public-science.org/recoveryresources>

⁸<http://public-science.org/communityresources>

⁹<http://public-science.org/physicalactivity>

Appendix 2: Mutual Aid Meetings Near Burlington

Table 4: Mutual Aid Meetings in Burlington

Meeting Type	Group	Address	Weekly Meeting #
Alcoholics Anonymous	Fellowship Group	214 N 4th St #3c, Burlington, IA 52601, USA	13
Alcoholics Anonymous	Into Action	2411 West Ave, Burlington, IA 52601, USA	1
Al-Anon	Caring and Sharing AFG	2411 West Avenue, Burlington, IA, 52601, USA	1
Al-Anon	Serenity AFG	2411 West Ave, Burlington, IA, 52601, USA	1
Al-Anon	West Avenue Alateen	2411 West Avenue, Burlington, IA, 52601, USA	1
Celebrate Recovery	Harmony Bible Church	550 Division St, Burlington, Iowa 52601 United States	1
Narcotics Anonymous	Came To Believe	412 Jefferson St, Burlington, IA 52601, USA	1

Appendix 3: Resources Near Burlington

Table 5: Recovery Resources in Burlington

Resource Type	Name	Address
Baseball/Softball Diamond	19 Baseball/Softball Diamonds	Burlington, Des Moines County, Iowa, 52601, United States
Outdoor Basketball Court	1 Outdoor Basketball Court	Burlington, Des Moines County, Iowa, 52601, United States
Childcare Provider	Abigail Jackson	706 S Garfield AVE, Burlington, IA, 52601
Childcare Provider	Aisha Curry	521 Vine ST, Burlington, IA, 52601
Childcare Provider	Amanda McCabe	1925 Whittier ST, Burlington, IA, 52601
Childcare Provider	Antonea Brooks-Wells	1008 S 12th ST, Burlington, IA, 52601
Childcare Provider	Apple's Daycare	822 S Leebrick ST, Burlington, IA, 52601
Childcare Provider	Burlington Area YMCA Child Care Center	2410 Mt Pleasant ST, Burlington, IA, 52601
Childcare Provider	Burlington Area YMCA-Black Hawk Site	2804 S 14th St, Burlington, IA, 52601
Childcare Provider	Burlington Area YMCA-Sunnyside Site	2040 Sunnyside Ave, Burlington, IA, 52601
Childcare Provider	Burlington CSD-James Wilson Grimes School-STARs	800 South Street, Burlington, IA, 52601
Childcare Provider	Burlington Head Start Preschool & Early Head Start	700 S Starr St, Burlington, IA, 52601
Childcare Provider	Carrie Krieger	1305 S 3rd ST, Burlington, IA, 52601
Childcare Provider	Cindy Jones	707 S 13th ST, Burlington, IA, 52601
Childcare Provider	Corse Early Childhood Center	700 S Starr AVE, Burlington, IA, 52601
Childcare Provider	DB Cares Inc	5784 Summer ST, Burlington, IA, 52601
Childcare Provider	DaFawn Orduno	1701 S 12th ST, Burlington, IA, 52601
Childcare Provider	Danielle Doss	531 S Leebrick ST, Burlington, IA, 52601
Childcare Provider	Denise Horn	2422 West AVE, Burlington, IA, 52601
Childcare Provider	Dianna Jackson	1104 S 7th ST, Burlington, IA, 52601
Childcare Provider	Grayhound Preschool	700 S Starr St, Burlington, IA, 52601
Childcare Provider	Great River Christian School & Preschool	426 Harrison Ave, Burlington, IA, 52601
Childcare Provider	In Caring Hands LLC	201 N Central AVE, Burlington, IA, 52601
Childcare Provider	Jean Johnson	401 Summer ST, Burlington, IA, 52601
Childcare Provider	Josie Shirts	1517 Hillary AVE, Burlington, IA, 52601
Childcare Provider	Kathleen Hill & Jerry Hill	1316 Brick ST, Burlington, IA, 52601
Childcare Provider	Kellie Aney	258 S Central AVE, Burlington, IA, 52601
Childcare Provider	Keri Hartman	1201 Dehner ST, Burlington, IA, 52601
Childcare Provider	Kinneer's Kiddie Kastle	2344 Mason RD, Burlington, IA, 52601
Childcare Provider	Kishauna Denny	1310 S 13th ST, Burlington, IA, 52601
Childcare Provider	LaVaysha Magee	1100 S 10th ST, Burlington, IA, 52601
Childcare Provider	Lakisha Moore	2516 Washington ST, Burlington, IA, 52601
Childcare Provider	Lauretta Lewis	1909 Madison AVE, Burlington, IA, 52601
Childcare Provider	Leanna Harris	1012 N 8th ST, Burlington, IA, 52601
Childcare Provider	Little Angels Childcare	2610 Vineyard ST, Burlington, IA, 52601
Childcare Provider	Little Nike Preschool and Daycare	700 S Roosevelt AVE, Burlington, IA, 52601
Childcare Provider	Lori Brockett	1422 Agency ST, Burlington, IA, 52601
Childcare Provider	Marleisha Timmons	1825 Vogt ST, Burlington, IA, 52601
Childcare Provider	Melanie Foreman	1036 N 9th ST, Burlington, IA, 52601
Childcare Provider	Messiah Lutheran Preschool	2411 West Ave, Burlington, IA, 52601
Childcare Provider	Munchkin City	317 S Gunnison ST, Burlington, IA, 52601
Childcare Provider	Ornette Cratton	705 S Central AVE, Burlington, IA, 52601
Childcare Provider	Pamela Turner	1120 Chalfant ST, Burlington, IA, 52601
Childcare Provider	Peterson Daycare	211 Marietta ST, Burlington, IA, 52601
Childcare Provider	Rae Ludens	1515 Winchester DR, Burlington, IA, 52601
Childcare Provider	Robin Young	263 S Central AVE, Burlington, IA, 52601
Childcare Provider	Sandra Gray	2103 Racine AVE, Burlington, IA, 52601
Childcare Provider	Shannon Whittaker	830 N 6th ST, Burlington, IA, 52601
Childcare Provider	Sonya Severado	1429 Cleveland AVE, Burlington, IA, 52601
Childcare Provider	Sunny Day Preschool	3109 Sunnyside Ave, Burlington, IA, 52601
Childcare Provider	Tammy Miller	1604 Haskell ST, Burlington, IA, 52601
Childcare Provider	Tanekee Wilson	550 S Central AVE, Burlington, IA, 52601

Childcare Provider	Terri Endress	1113 South 9th ST, Burlington, IA, 52601
Childcare Provider	Theresa Lowary	2202 Miller ST, Burlington, IA, 52601
Childcare Provider	Yvette Harris	812 S Central AVE, Burlington, IA, 52601
College or University	Des Moines Area Community College	Des Moines Area Community College, Ankeny, IA, 52601
College or University	Des Moines University	Des Moines University, Des Moines, IA, 52601
Drug Drop-off Site	Hy-Vee Pharmacy	3140 E. Agency, Burlington, IA, 52601
Drug Drop-off Site	Hy-Vee Pharmacy #1 (1042)	939 Angular Street, Burlington, IA, 52601
Family Support Specialist	Children Integrated Health Home	4717 Sullivan Slough Rd, Burlington, IA 52601
Football Field	4 Football Fields	Burlington, Des Moines County, Iowa, 52601, United States
Library	Burlington Public Library	210 Court St, Burlington, IA,
MAT Site	Michelle Sue Prisner, NP	903 Oak St, BURLINGTON, IA 52601-4608
Mental & Behavioral Health Center	Hope Haven Area Development Center	828 N 7th, Burlington, IA
Other Sports Facilities	4 Other Sports Facilities	Burlington, Des Moines County, Iowa, 52601, United States
Public Park	Cottonwood Park	No Address in Data
Public Park	Crapo Park	No Address in Data
Public Park	Dankwardt Memorial Park	No Address in Data
Public Park	DeEdwin & Gladys White Park	No Address in Data
Public Park	Kersch Park	No Address in Data
Public Park	Mosquito Park	No Address in Data
Public Park	Nancy Neafie Park	No Address in Data
Public Park	North Hill Park	No Address in Data
Public Park	Perkins Park	No Address in Data
Public Park	Riverside Park	No Address in Data
Public Park	Saunderson Park	No Address in Data
Public Park	South Hill Park	No Address in Data
Public Park	Summer Street Park	No Address in Data
Public Park	Sunnyside Park	No Address in Data
Peer Support Provider	Recovery and Resource Center	910 Cottonwood Ct, Burlington, IA 52601
Place of Worship	Asbury United Methodist Church	No Address in Data
Place of Worship	Bethany Lutheran Church	No Address in Data
Place of Worship	Bible Missionary Church	No Address in Data
Place of Worship	Burlington Baptist Church	No Address in Data
Place of Worship	Calvary Baptist Church	No Address in Data
Place of Worship	Christ Episcopal Church	No Address in Data
Place of Worship	Church of Christ	No Address in Data
Place of Worship	Church of the Open Bible	No Address in Data
Place of Worship	Community of Christ Reorganized	No Address in Data
Place of Worship	Church of Jesus Christ of Latter Day Saints	No Address in Data
Place of Worship	Concordia Lutheran Church	No Address in Data
Place of Worship	Faith Lutheran Church	No Address in Data
Place of Worship	Faith Presbyterian Church	No Address in Data
Place of Worship	Faith Temple	No Address in Data
Place of Worship	First Assembly of God Church	No Address in Data
Place of Worship	First Christian Church	No Address in Data
Place of Worship	First Congregational Church	No Address in Data
Place of Worship	First Presbyterian Church	No Address in Data
Place of Worship	First United Church of Christ	No Address in Data
Place of Worship	First United Methodist Church	No Address in Data
Place of Worship	Flint Hills Church of the Nazarene	No Address in Data
Place of Worship	Foursquare Church	No Address in Data
Place of Worship	Free Methodist Church	No Address in Data
Place of Worship	Grace United Methodist Church	No Address in Data
Place of Worship	Greater Hope Missionary Baptist Church	No Address in Data
Place of Worship	Heritage Baptist Church	No Address in Data
Place of Worship	Hope Temple Christian Church	No Address in Data
Place of Worship	Jehovah's Witness Woodland Congregation	No Address in Data
Place of Worship	Jesus Christ Apostolic Temple	No Address in Data

Place of Worship	Messiah Lutheran Church	No Address in Data
Place of Worship	New Fellowship Christian Church	No Address in Data
Place of Worship	New Hope Christian Church	No Address in Data
Place of Worship	New Hope Community Church	No Address in Data
Place of Worship	Oak Street Baptist Church	No Address in Data
Place of Worship	Our Savior Lutheran Church	No Address in Data
Place of Worship	Peace Mennonite Church	No Address in Data
Place of Worship	Riverside Baptist Church	No Address in Data
Place of Worship	Saint John African Methodist Episcopal Church	No Address in Data
Place of Worship	Saint John's Catholic Church	No Address in Data
Place of Worship	Saint Luke United Church of Christ	No Address in Data
Place of Worship	Saint Patrick's Church	No Address in Data
Place of Worship	Saint Paul's Church	No Address in Data
Place of Worship	Saint Pauls Roman Catholic Church	No Address in Data
Place of Worship	Salvation Army Church	No Address in Data
Place of Worship	Seventh Day Adventist Church	No Address in Data
Place of Worship	Sunnyside Avenue Baptist Church	No Address in Data
Place of Worship	Temple Israel	No Address in Data
Place of Worship	The Church of Jesus Christ of Latter Day Saints	No Address in Data
Place of Worship	Trinity Evangelical Lutheran Church	No Address in Data
Place of Worship	Union Baptist Church Full Gospel Fellowship	No Address in Data
Place of Worship	Unitarian Universalist Fellowship	No Address in Data
Place of Worship	United Pentecostal Church	No Address in Data
Place of Worship	Walnut Street First Baptist Church	No Address in Data
Place of Worship	West Avenue Baptist Church	No Address in Data
Place of Worship	West Hill United Methodist Church	No Address in Data
Place of Worship	Whole Truth Gospel Church of Holiness	No Address in Data
Place of Worship	Zion United Church of Christ	No Address in Data
Playground	Sunnyside School Playground	No Address in Data
Playground	4 Playgrounds	No Address in Data
SUD Recovery Coach	Peer Recovery - Burlington office	1340 Mt Pleasant St, Burlington, IA 52601
School	Aldo Leopold Intermediate School	3075 Sunnyside, Burlington, IA, 52601
School	Black Hawk Elementary School	2804 S 14th St, Burlington, IA, 52601
School	Burlington Community High School	421 Terrace Dr, Burlington, IA, 52601
School	Corse Early Childhood Center	700 South Starr Avenue, Burlington, IA, 52601
School	Edward Stone Middle School	3000 Mason Rd., Burlington, IA, 52601
School	James Wilson Grimes School	800 South St., Burlington, IA, 52601
School	North Hill Elementary School	825 N. 9th St., Burlington, IA, 52601
School	Sunnyside Elementary School	2040 Sunnyside Ave., Burlington, IA, 52601
School	Burlington Notre Dame Schools	702 S Roosevelt Avenue, Burlington, IA, 52601
School	Notre Dame Elementary School	700 S Roosevelt Ave, Burlington, IA, 52601
School	Notre Dame High School	702 S Roosevelt Ave, Burlington, IA, 52601
Section 8 Housing	Friedenheim Community Rad For Prac	2603 Madison Ave, Burlington, IA, 52601
Section 8 Housing	Hamilton Place Apartments	3325 Sterling Drive, Burlington, IA, 52601
Section 8 Housing	Lake View Apartments	2117 Northern Dr, Burlington, IA, 52601
Section 8 Housing	Midtown Gardens	61 Midtown Ln, Burlington, IA, 52601
Section 8 Housing	Robinson Heights Apartments	2501 Mount Pleasant St, Burlington, IA, 52601
Section 8 Housing	Steamboat Landing	420 S 4th St, Burlington, IA, 52601
Section 8 Housing	Stone Gardens	2312 Valley St, Burlington, IA, 52601
Section 8 Housing	Walton Group Home	2101 Northern Dr, Burlington, IA, 52601
Shelter	Burlington Area Homeless Shelter	123 Marshall St, Burlington, IA, 52601
Soccer Field	3 Soccer Fields	Burlington, Des Moines County, Iowa, 52601, United States
SUD or Gambling Treatment Center	Alcohol and Drug Dependency Services of Southeast Iowa	1340 Mt. Pleasant St., Burlington, IA, 52601, United States
SUD or Gambling Treatment Center	Alcohol and Drug Dependency Services of Southeast Iowa	910 Cottonwood Ct., Burlington, IA, 52601, United States
SUD or Gambling Treatment Center	Community Health Centers of Southeastern Iowa, Inc.	400 South Broadway, Burlington, IA, 52655, United States

Tennis Court	18 Tennis Courts	Burlington, Des Moines County, Iowa, 52601, United States
VA Hospital or Clinic	Burlington VA Clinic	1000 N Roosevelt Ave, Ste 7, Burlington, IA 52601
Outdoor Volleyball Court	5 Outdoor Volleyball Courts	Burlington, Des Moines County, Iowa, 52601, United States
YMCA	Burlington Area YMCA	2410 Mt Pleasant St, Burlington, IA 52601
