



Recovery Readiness Assessment: Bettendorf

September, 2024



Report provided to the Iowa Department of Health and Human Services

This project is supported by State Opioid Response funds through the Iowa Department of Health and Human Services, Bureau of Substance Use (IowaHHS) via a subaward from the Substance Abuse and Mental Health Services Administration (SAMHSA) of the U.S. Department of Health and Human Services (HHS). The contents are those of the author(s) and do not necessarily represent the official views of, nor an endorsement by, IowaHHS, SAMHSA/HHS, or the U.S. Government.

Table of contents

Overview	2
What is a Recovery-Ready Community?	2
What is Recovery?	2
What is Recovery Readiness?	3
What is a Recovery Community Organization?	3
Is Your Community Recovery Ready?	4
What Are the Resources in Your Community?	5
SAMHSA Dimensions of Recovery Resources	6
Social Determinants of Health Recovery Resources	9
Which Neighborhoods in Your Community Need Additional Health Resources and Support?	12
Substance Use Vulnerability	12
Social Determinants of Health	17
Appendix 1: Data Used in this Report	18
Appendix 2: Mutual Aid Meetings Near Bettendorf	19
Appendix 3: Resources Near Bettendorf	20

Overview

At the request of the Iowa Department of Health and Human Services, Bureau of Substance Use, the Public Science Collaborative (PSC) developed community-specific reports to support recovery efforts in Iowa. Recognizing the need to strengthen substance use recovery efforts throughout the state, we identified a large number of existing recovery-oriented resources in Bettendorf, which we describe and map in the following pages. We developed additional maps to identify at-risk neighborhoods that will benefit from targeted health interventions and additional community resources. For additional questions or information about this report, the data tools described, or the Public Science Collaborative, please reach out to the principal investigators of this study, Dr. Shawn Dorius at sdorius@iastate.edu, or Dr. Cassandra Dorius at cdorius@iastate.edu.

In this report, we define recovery and recovery-ready communities and describe some of the recovery organizations that are emerging across Iowa. We then describe the recovery resources that we collected for your community, providing summary information about where your community has strength and where its resource base can look to grow in the future. We then show you how your community recovery services and resources align with the Substance Abuse and Mental Health Administration (SAMHSA) categories of recovery and where those resources are in your community. We also classified your community assets according to the Centers for Disease Control's social determinants of health framework, which can be useful as you think holistically about the health and well-being of people living there.

We have added two other sets of data and maps in this report that might be helpful in your recovery readiness planning. The first is a set of maps that identify substance use vulnerability for census tracts in your community. These can be helpful in knowing what kinds of substances people are most likely to be recovering from in your community, where to marshal resources and efforts to support at-risk neighborhoods, and where to plan events that meet people where they are. A second set of data and maps project neighborhood-level scores for a community health index that measures the social determinants of health problems. This index is designed to help practitioners and local community groups better understand neighborhoods that could use extra support, resources, and investments to improve the health and well-being of individuals and families.

What is a Recovery-Ready Community?

What is Recovery?

The Iowa Department of Health and Human Services and the Substance Abuse and Mental Health Services Administration (SAMHSA) use the following working definition:

"A process of change through which individuals improve their health and wellness, live a self-directed life, and strive to reach their full potential."

A second useful definition of recovery that has influenced the PSC approach to recovery community readiness was developed by Bill White:

"Recovery is the experience through which individuals, families, and communities impacted by severe alcohol and other drug (AOD) problems utilize internal and external resources to voluntarily resolve these problems, heal the wounds inflicted by AOD-related problems, actively manage their continued vulnerability to such problems, and develop a healthy, productive, and meaningful life."

Common to both definitions is that recovery is not a state or moment in life, but a process of moving toward better health in an actively managed and self-directed way. Recovery takes time and often involves not just the individual, but family and community. For this reason, the external resources noted in the White definition are what motivate our emphasis on recovery-ready communities. Resources outside of the individual, including housing, transportation, recreation, alcohol advertising, and schools, can lead to an early onset of recovery, longer recovery, and more stable recovery. One way these external resources contribute to recovery is through their impact on individual recovery capital. If we knew which resources were most helpful to long-run recovery, we could target towns and cities with large stocks of 'recovery resources' to grow Recovery Community Centers.

What is Recovery Readiness?

A recovery-ready community provides a comprehensive and supportive environment for individuals recovering from substance use disorders (SUD). This includes a continuum of care that spans prevention, treatment, and long-term recovery support. Key elements include accessible healthcare, peer support networks, educational and employment opportunities, harm reduction services, anti-stigma initiatives, and a sense of purpose. By fostering collaboration among community members, institutions, and policymakers, a recovery-ready community aims to create a nurturing ecosystem that promotes sustained recovery and overall well-being.

In Iowa, a recovery-ready community supports multiple recovery pathways, meets the needs of its recovery population, is integrated and coordinated across the formal and informal recovery-oriented system of care, and has a vibrant recovery culture.

What is a Recovery Community Organization?

Recovery organizations are groups or institutions that support individuals recovering from substance use disorders. While recovery organizations come in many forms, they share a common commitment to providing a range of services and resources to help people sustain their recovery, improve their health and well-being, and reintegrate into society. Most community-based recovery organizations will offer some form of peer support, either in the form of peer support specialists, recovery coaches, or mutual aid meetings, and a range of activities and services to grow community and connection among people in recovery. These organizations also offer a substance-free environment where all are welcome and people in recovery can receive guidance in daily living activities such as finding stable housing, a job, volunteer opportunities, recreation and social groups, and linkages to legal support, for example. A few of the most well-known recovery organizations include:

- **Recovery Houses:** These are safe, substance-free living environments that support people in recovery from substance use disorders. Most recovery houses provide a structured and supportive community where residents can focus on their recovery journey and live among other people in recovery. Oxford Houses are among the most well-known recovery residences.
- **Recovery Community Centers:** These centers are free, universal access physical spaces that offer a variety of services to support individuals in recovery. A typical recovery community center will host mutual aid meetings, maintain a network of local recovery coaches, engage in community advocacy for people in recovery, and coordinate life-skills training, social activities, employment assistance, housing assistance, and linkages to educational resources. They will also coordinate with first responders, parole officers, and emergency departments to support people with substance use disorders.
- **Recovery Cafes:** These community spaces bring people in recovery together, providing a space to socialize with other people in recovery, support one another, and engage in service. Cafés often provide free hot meals, beverages, and other basic needs to support people in recovery. They might also offer peer support and other activities in a welcoming, substance-free environment. The [Recovery Café Network](https://recoverycafenetwork.org/)¹ is a good starting place to learn more.
- **Recovery High Schools and Collegiate Recovery Programs:** These educational institutions provide a supportive environment for students in recovery, helping them achieve academic success while maintaining their sobriety. They do this in much the same way as community centers and cafes, by offering peer support, community, and recovery-focused activities. Iowa currently has three collegiate recovery programs.

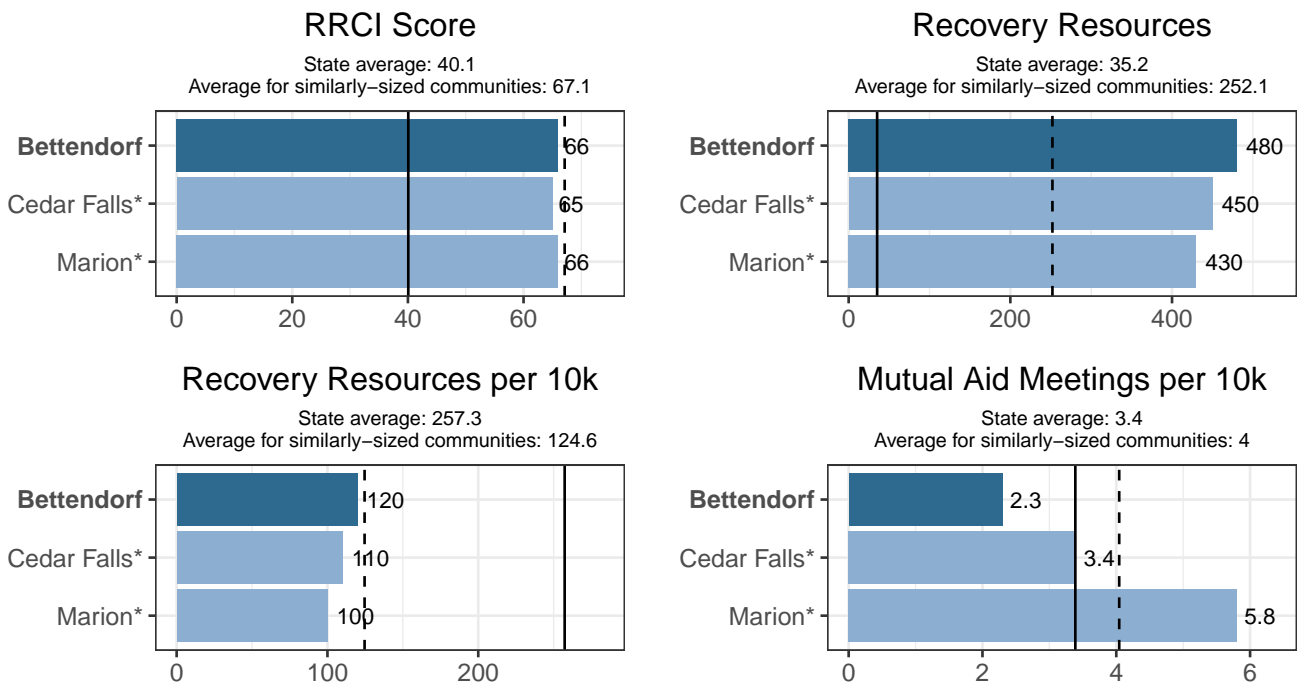
¹<https://recoverycafenetwork.org/>

Is Your Community Recovery Ready?

We consulted scientific literature on substance use recovery and engaged key stakeholders, including people in recovery and individuals from around the country and in Iowa who work directly with recoverees. From these efforts, we identify 24 categories of community-based recovery resources and services. Collecting all of that data for each of Iowa's cities and towns yielded a total of nearly 40,000 community resources that support recovery. We mapped and analyzed these resources to identify a short list of 'Recovery Ready' communities across the state, culminating in the first-of-its-kind index: The Recovery Ready Community Index (RRCI).

The RRCI is comprised of three sub-indices: total number of resources, total resources per 10,000 population, and total mutual aid meetings per 10,000 population (the first two categories include all resources except mutual aid meetings). A community's score is calculated by its percentile rank among all Iowa communities. For instance, the community with the most resources has a total resources percentile score of 99, while the one with the fewest has a score of 0. A community's overall recovery readiness score is the average of its percentile ranking across each of the three sub-indices. The Public Science Collaborative designed and created a public-facing, [interactive dashboard](#)² that allows people to further explore the RRCI, compare recovery readiness scores, and evaluate communities.

Figure 1 below displays recovery resources in Bettendorf compared to the two Iowa cities most similar in population, Cedar Falls and Marion, as well as the state average and average for cities in a similar population group (10,000 - 49,999).



* The Iowa cities most comparable to Bettendorf by population are Cedar Falls and Marion.

** The solid vertical line represents the average for all 944 communities in Iowa and the dashed vertical line represents the average for Iowa communities with populations of 10,000 – 49,999 people.

Figure 1: Recovery Resources in Bettendorf

Bettendorf ranks 18th of 31 on the RRCI in its size category (10,000 - 49,999). In the same population group, Bettendorf ranks 3rd in total resources, 13th in resources per 10,000 people, and 23rd in mutual aid meetings per 10,000 people.

In addition to the RRCI, a community might also consider resource diversity. That is, whether Bettendorf has a wide range of types of resources to support multiple pathways to recovery. On this measure, Bettendorf has 14 types of non-meeting resources, compared to the average of 13.7 for cities with a population of 10,000 - 49,999.

²<https://publicsciencecollaborative.shinyapps.io/RRCI/>

What Are the Resources in Your Community?

Overall, Bettendorf has 37 mutual aid meetings and 311 non-meeting recovery resources non-meeting recovery resources. The tables below include data about the specific kinds of mutual aid meetings and other recovery resources available in your community. Appendices 2 and 3 have a full list of these resources. Following the tables, we have prepared maps that break up the data into categories of similar types of resources and show where resources are located in Bettendorf. These maps can be used to help identify areas that already have plentiful recovery resources and those that have limited resources and may need additional support.

Table 1: Types of Mutual Aid Meetings in Bettendorf

Meeting Type	Total Meeting Locations	Total Meetings
Alcoholics Anonymous	5	31
Narcotics Anonymous	2	4
Al-Anon	1	1
Celebrate Recovery	1	1

Table 2: Types of Recovery Resources in Bettendorf

Resource Type	Total Resources
Childcare Provider	43
Outdoor Basketball Court	40
Tennis Court	40
Baseball/Softball Diamond	36
Place of Worship	35
Playground	29
Public Park	29
School	13
Soccer Field	13
Other Sports Facilities	6
Pickleball Court	6
SUD or Gambling Treatment Center	4
Section 8 Housing	4
Outdoor Volleyball Court	3
Drug Drop-off Site	2
Hospital	2
YMCA	2
Family Support Specialist	1
Football Field	1
Library	1
Mental & Behavioral Health Center	1

SAMHSA Dimensions of Recovery Resources

As defined by SAMHSA, recovery is "A process of change through which individuals improve their health and wellness, live self-directed lives, and strive to reach their full potential." Because recovery is holistic and can look different for everybody, the SAMHSA Dimensions of Recovery listed below help identify the different parts of life and the different resources that are useful in supporting recovery. The following maps identify resources in Bettendorf that fit into each of those dimensions of recovery.

The SAMHSA Dimensions of Recovery include ([Click here for more information³](#)):

- **Community** (Peer Support–Specialists and Coaches, Recovery Organizations–Community and Collegiate, Mutual Aid Meetings, Libraries, Parks and Playgrounds, Lakes and Beaches, Trails, Sports Facilities)
- **Health** (Access Centers, Drug Drop Off Sites, Hospitals and Clinics, MAT Sites, Mental & Behavioral Health Centers, SUD and Gambling Treatment Centers, YMCA Gyms)
- **Home** (Childcare Providers, Recovery Housing, Section Eight Housing, Shelters, Intimate Partner Violence Programs)
- **Purpose** (Workforce Development Offices, Colleges and Universities, K-12 Schools, Places of Worship)

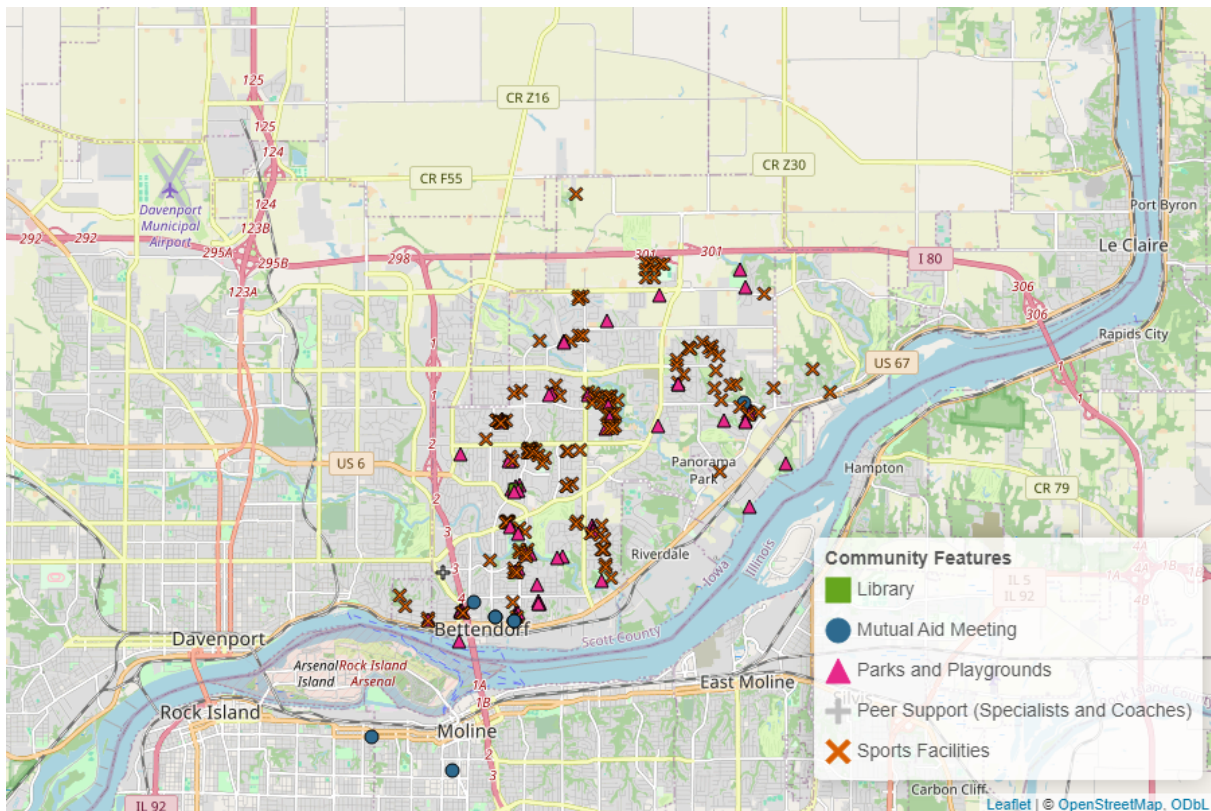


Figure 2: Community Resources in Bettendorf

³<https://www.samhsa.gov/find-help/recovery>

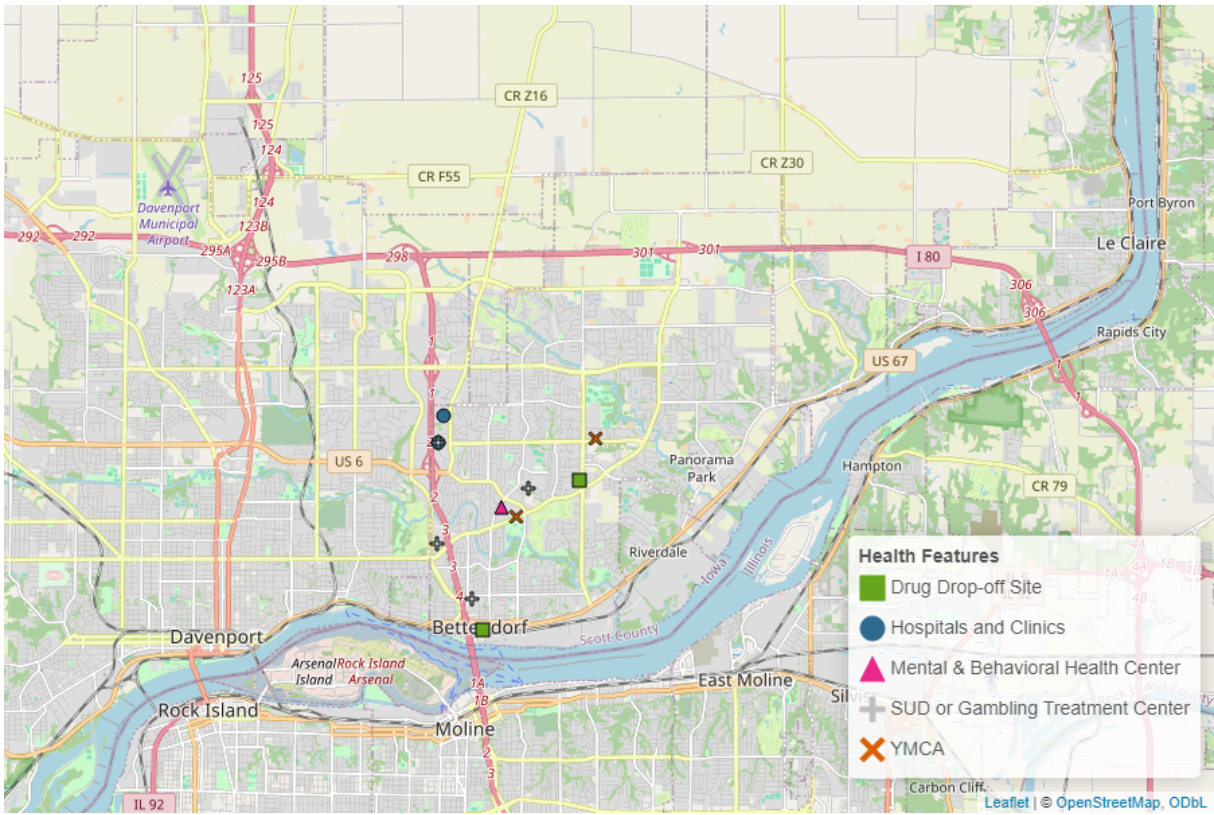


Figure 3: Health Resources in Bettendorf

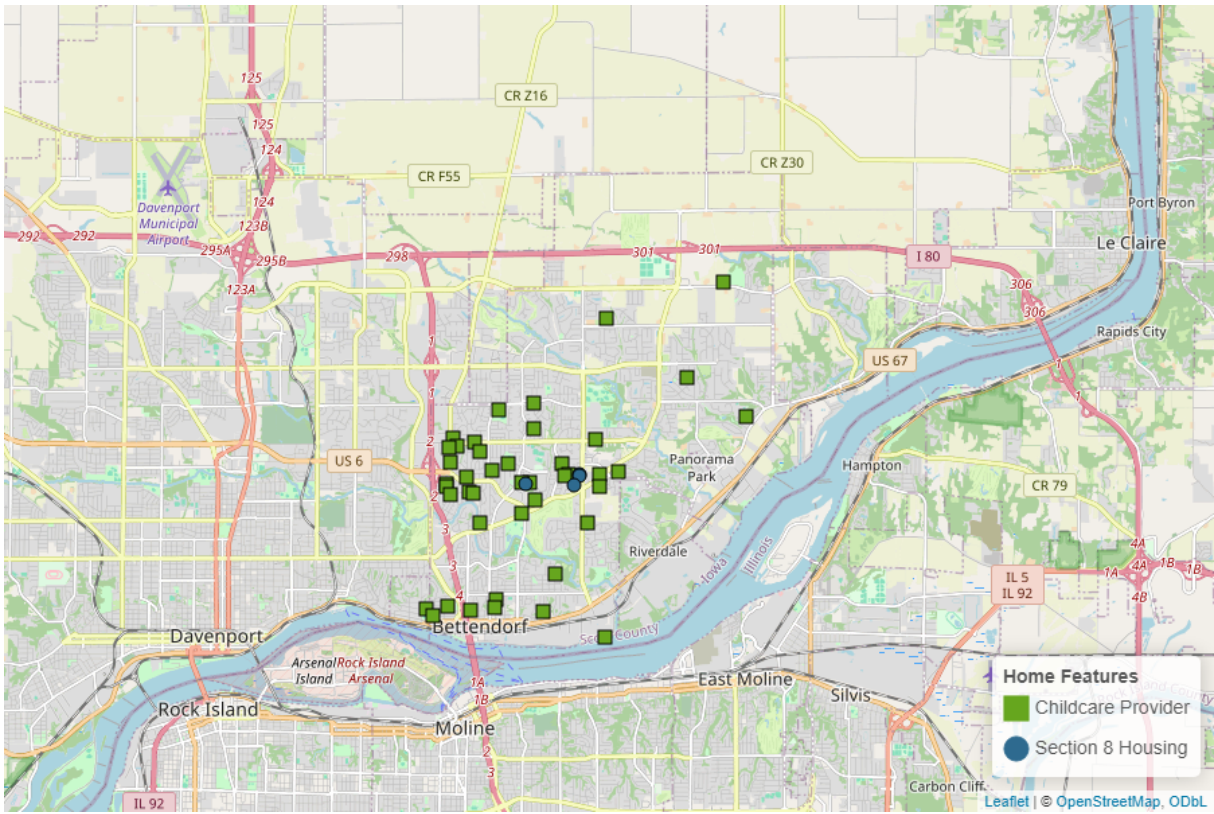


Figure 4: Home Resources in Bettendorf

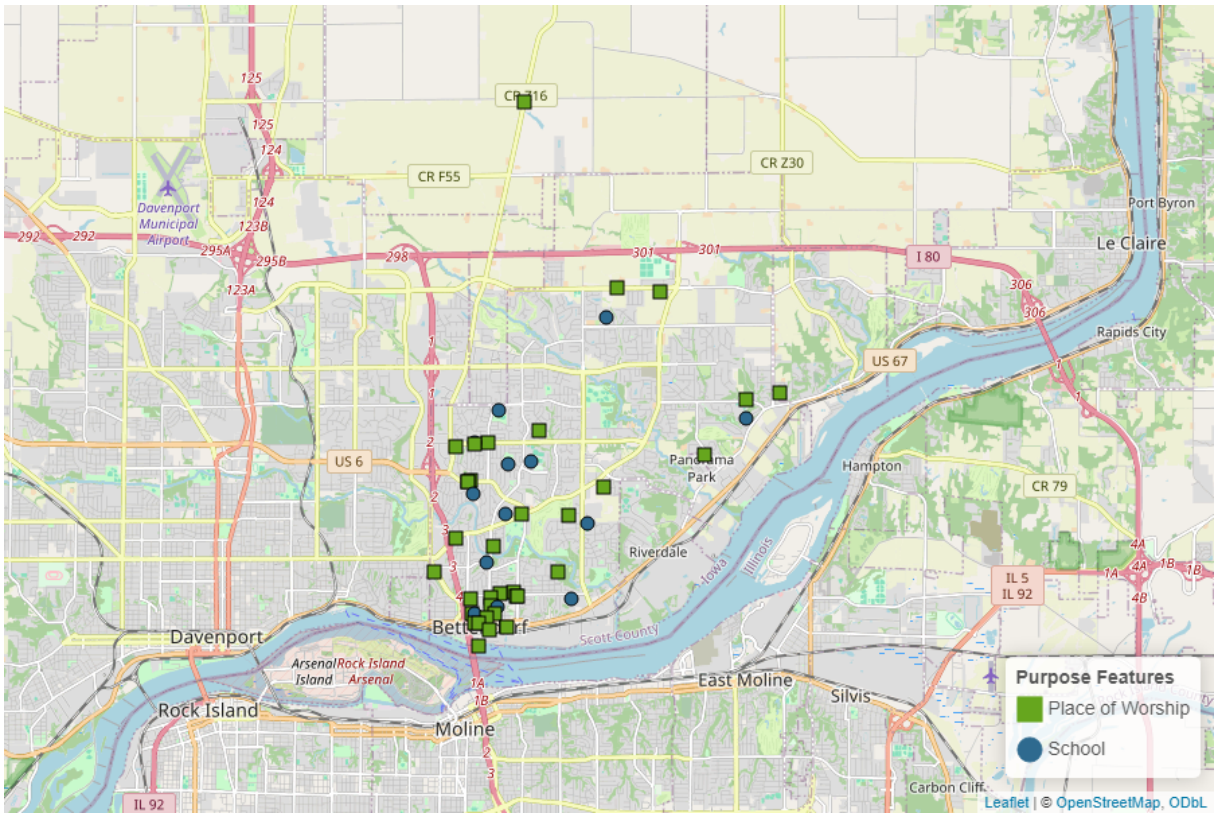


Figure 5: Purpose Resources in Bettendorf

Social Determinants of Health Recovery Resources

The Social Determinants of Health is an established framework for thinking about the conditions of a person's life that contribute to their overall well-being. For example, a family that living in an area with limited resources supporting families and children (such as childcare providers and parks or playgrounds) may experience other struggles as a result, like increased transportation costs that place stressors on a family's finances. These maps can also be used in conjunction with the population data in the next section to help identify vulnerable populations and neighborhoods. Neighborhoods with health and substance use vulnerabilities may need greater access to specific supporting resources.

The SDOH categories include ([Click here for more information⁴](#)):

- **Health Care Access and Quality** (Access Centers, Drug Drop Off Sites, Hospitals and Clinics, MAT Sites, Mental & Behavioral Health Centers, SUD and Gambling Treatment Centers)
- **Social and Community Context** (Peer Support–Specialists and Coaches, Recovery Organizations–Community and Collegiate, Intimate Partner Violence Programs, Mutual Aid Meetings, Places of Worship)
- **Neighborhood and Built Environment** (Libraries, Parks and Playgrounds, YMCA Gyms, Lakes and Beaches, Trails, Sports Facilities)
- **Education Access and Quality** (Colleges and Universities, K-12 Schools)
- **Economic Stability** (Childcare Providers, Recovery Housing, Section Eight Housing, Shelters, Workforce Development Offices)

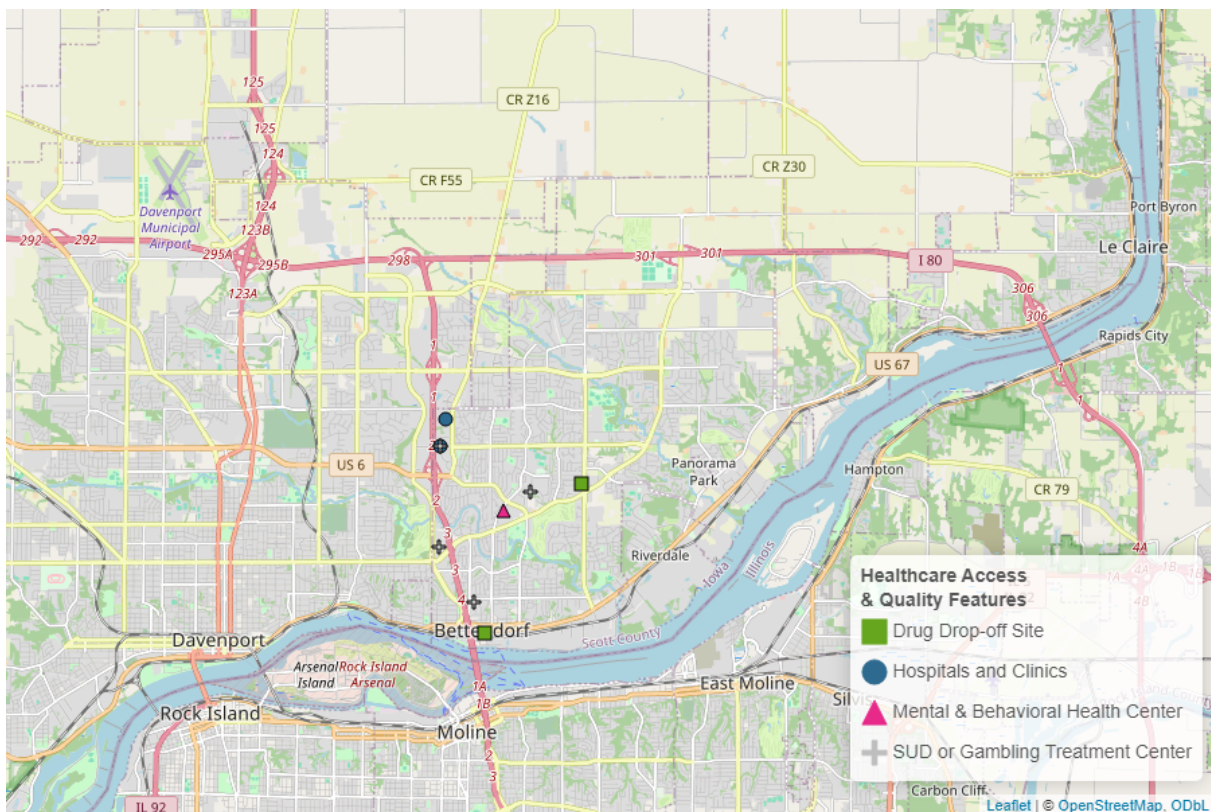


Figure 6: Health Care Access and Quality Resources in Bettendorf

⁴<https://health.gov/healthypeople/priority-areas/social-determinants-health>

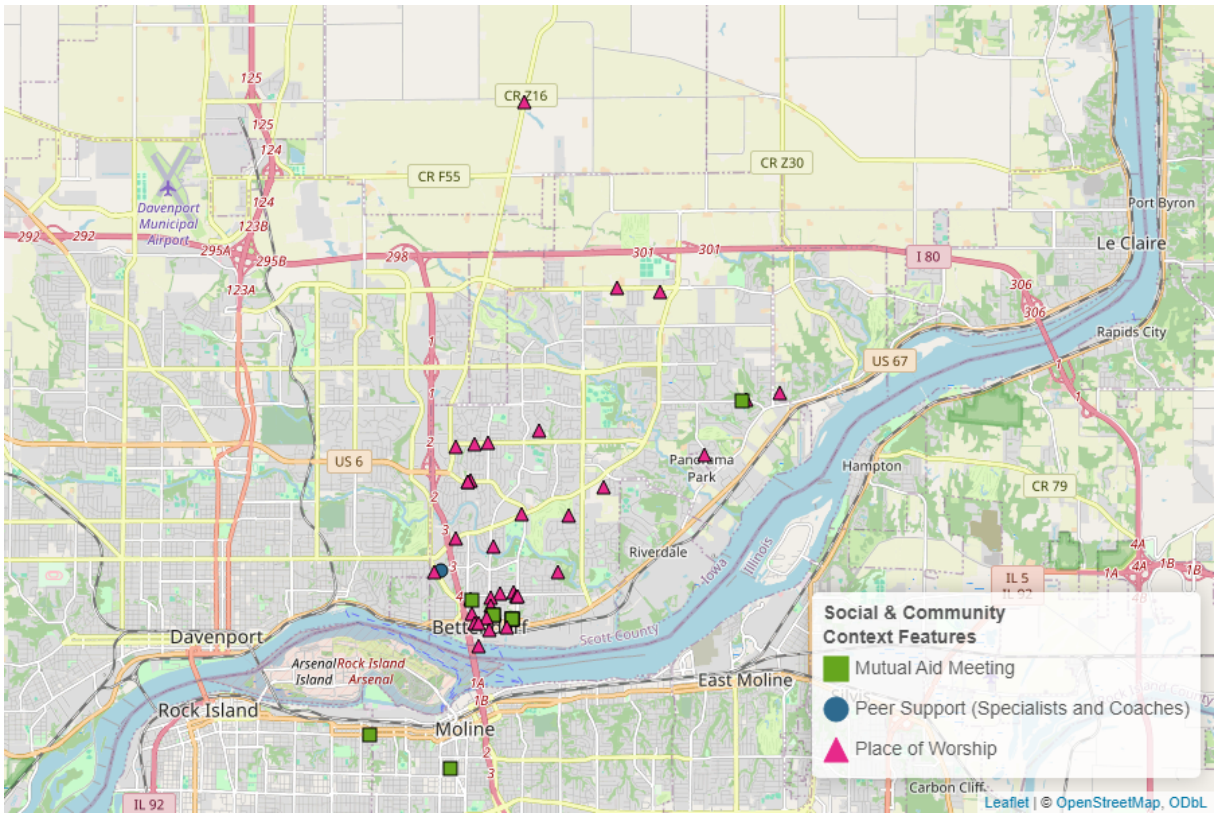


Figure 7: Social and Community Context Resources in Bettendorf

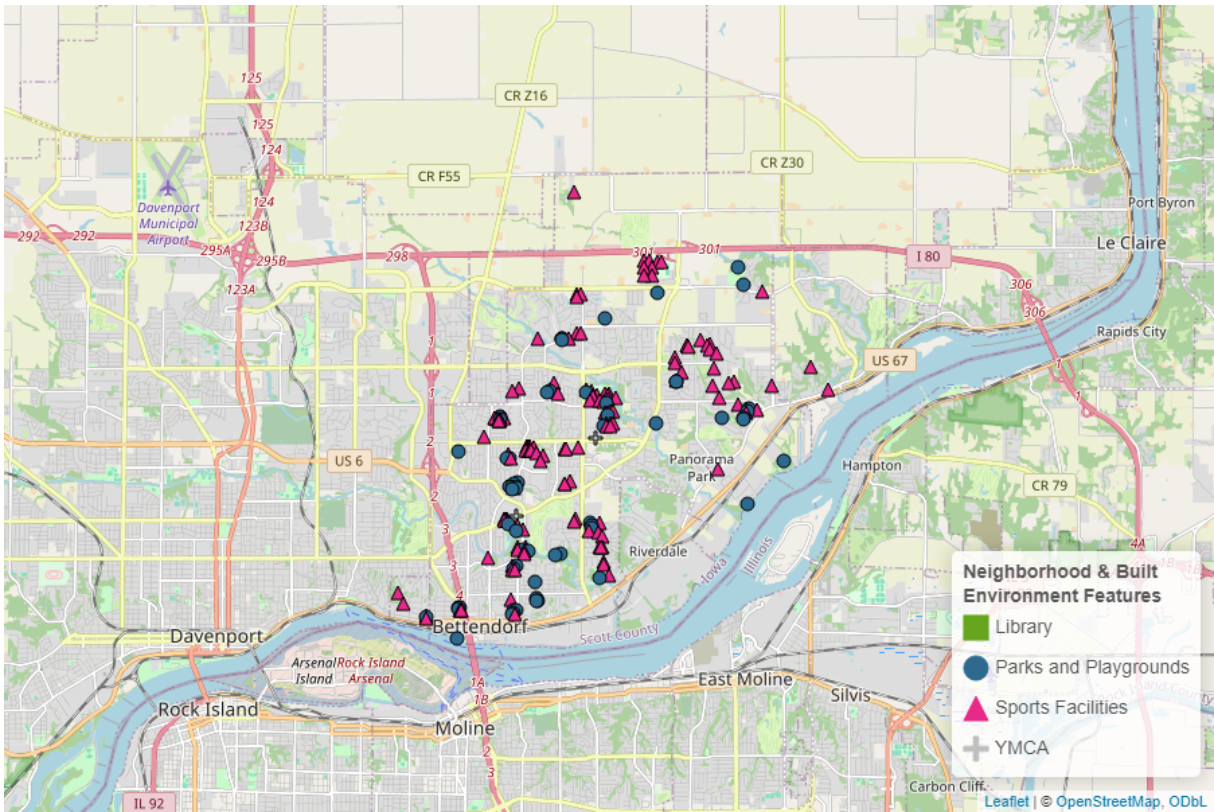


Figure 8: Neighborhood and Built Environment Resources in Bettendorf

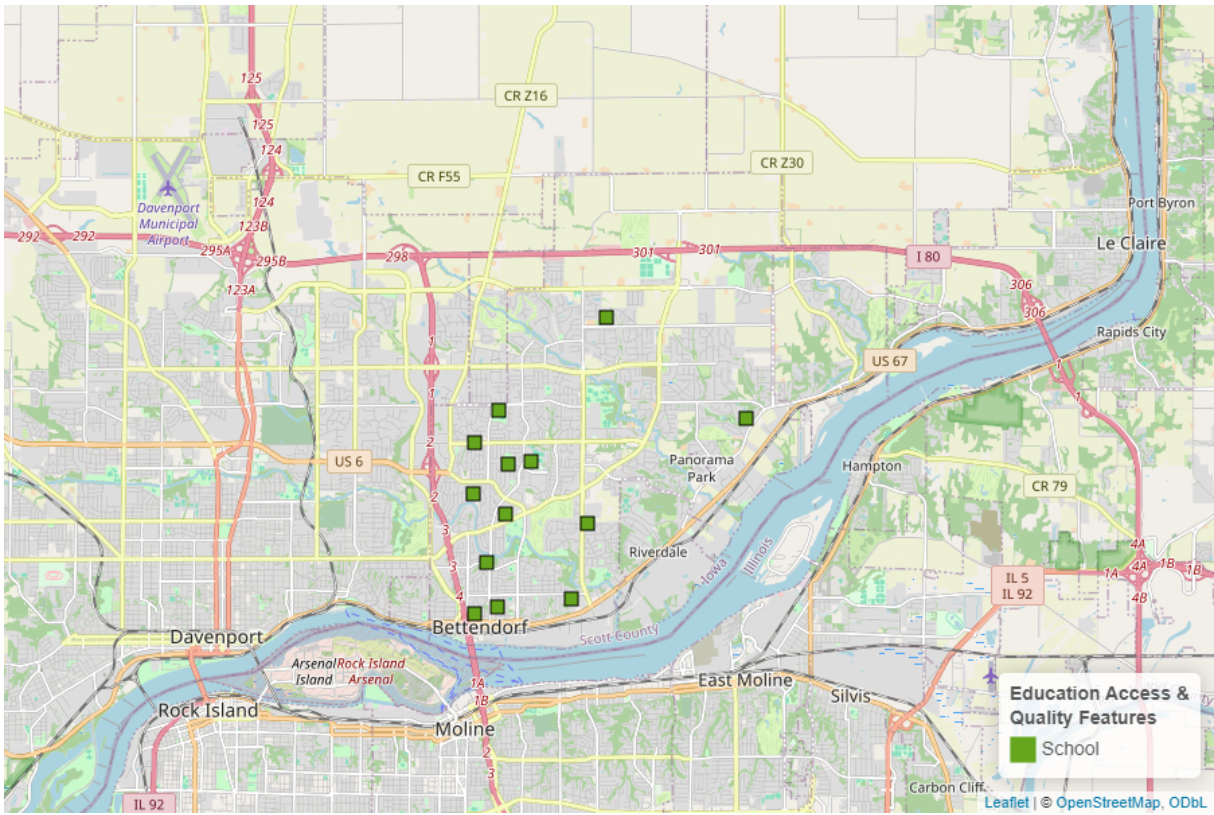


Figure 9: Education Access and Quality Resources in Bettendorf

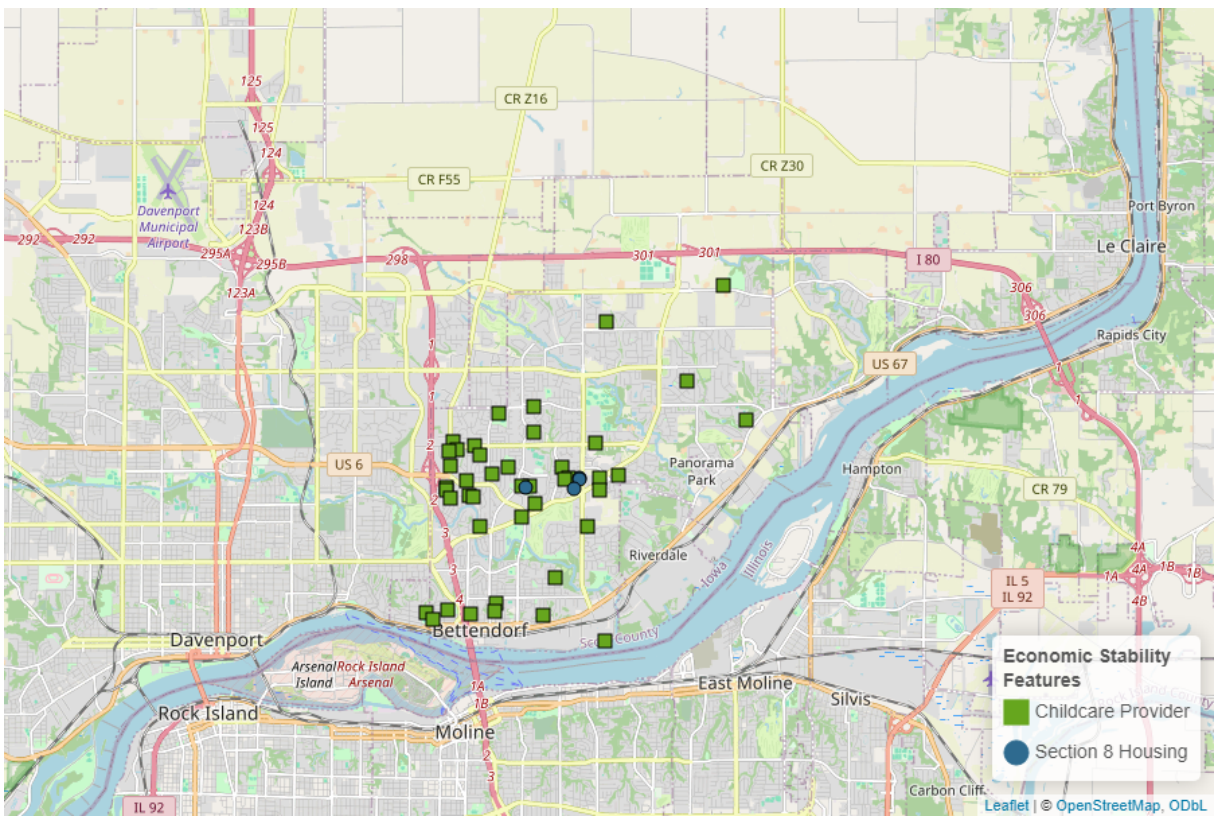


Figure 10: Economic Stability Resources in Bettendorf

Which Neighborhoods in Your Community Need Additional Health Resources and Support?

Substance Use Vulnerability

The Public Science Collaborative has developed data resources to help community organizations, local governments, and public health practitioners resources more effectively target substance use prevention, treatment, and recovery interventions to the places in greatest need. Geographic ‘hot spots’ identify places where local residents are at exceptionally high risk for substance use disorder. We estimated statistical models using administrative data from the Treatment Episode Admissions Dataset (TEDS-A) and the National Survey of Drug Use and Health (NSDUH) to measure significant relationships between substances of misuse and socio-demographic characteristics known to affect health equity and substance use vulnerability. These maps use Census Bureau estimates of these same neighborhood characteristics, by census tract, to create indexes for each substance. Once mapped, these data help us to identify places with especially high concentrations of at-risk characteristics that need targeted resources to reduce health inequities. You can explore the maps interactively and learn more about the underlying models on PSC’s [dashboard for substance use vulnerability](https://publicsciencecollaborative.shinyapps.io/substance_use_vulnerability/).⁵

Identification of towns and neighborhoods with exceptionally high (or low) risk of harmful use of a specific substance can guide public health outreach efforts and enable more targeted, substance-specific interventions based on known neighborhood risk factors. To assist in this work, the following pages include substance use vulnerability maps for overall substance use, opioids, methamphetamine, heroin, alcohol, cannabis, cocaine, and benzodiazepines.

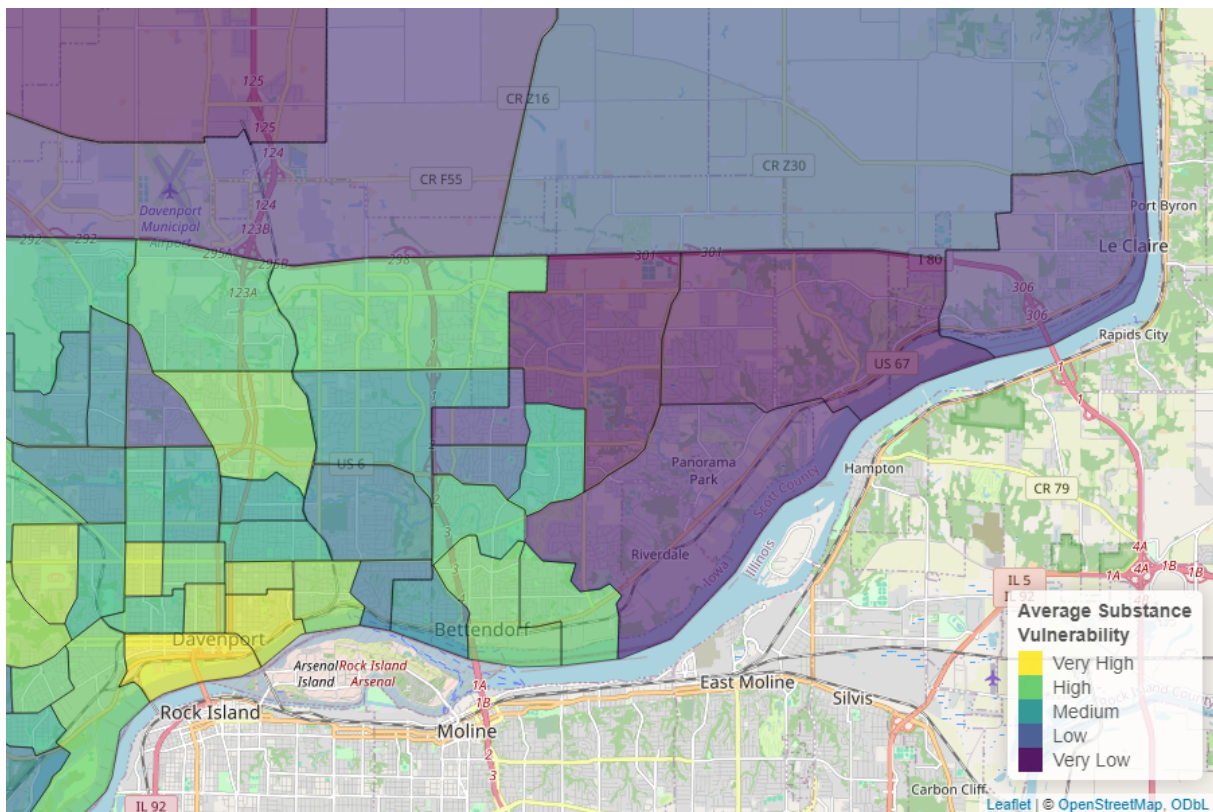


Figure 11: Overall Substance Use Vulnerability in Bettendorf

Overall substance use vulnerability varies by neighborhood in Bettendorf, but is generally about equal to other communities in Iowa. Due to neighborhood vulnerability, specific neighborhoods may benefit from a targeted approach rather than community-wide efforts. Community-wide vulnerability was highest for alcohol, and a breakdown for each substance is shown in the figures below.

⁵https://publicsciencecollaborative.shinyapps.io/substance_use_vulnerability/

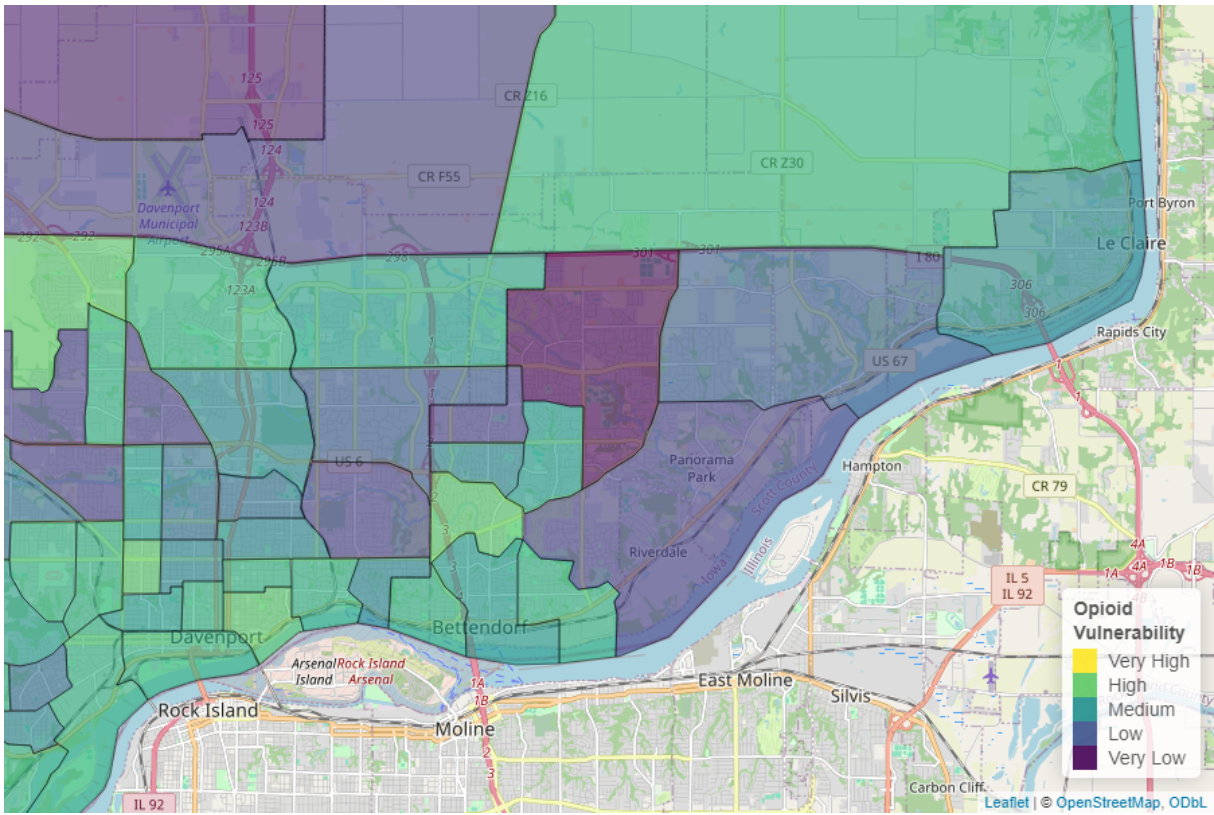


Figure 12: Opioid Vulnerability in Bettendorf

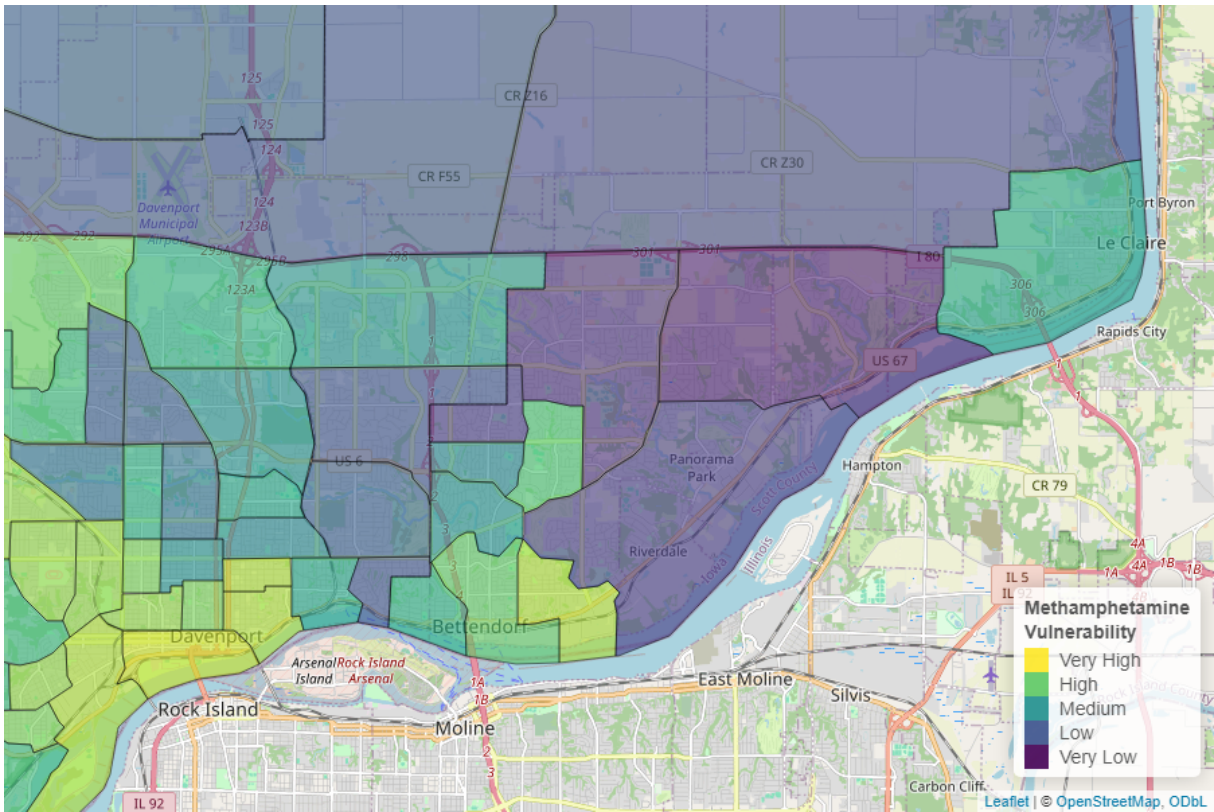


Figure 13: Methamphetamine Vulnerability in Bettendorf

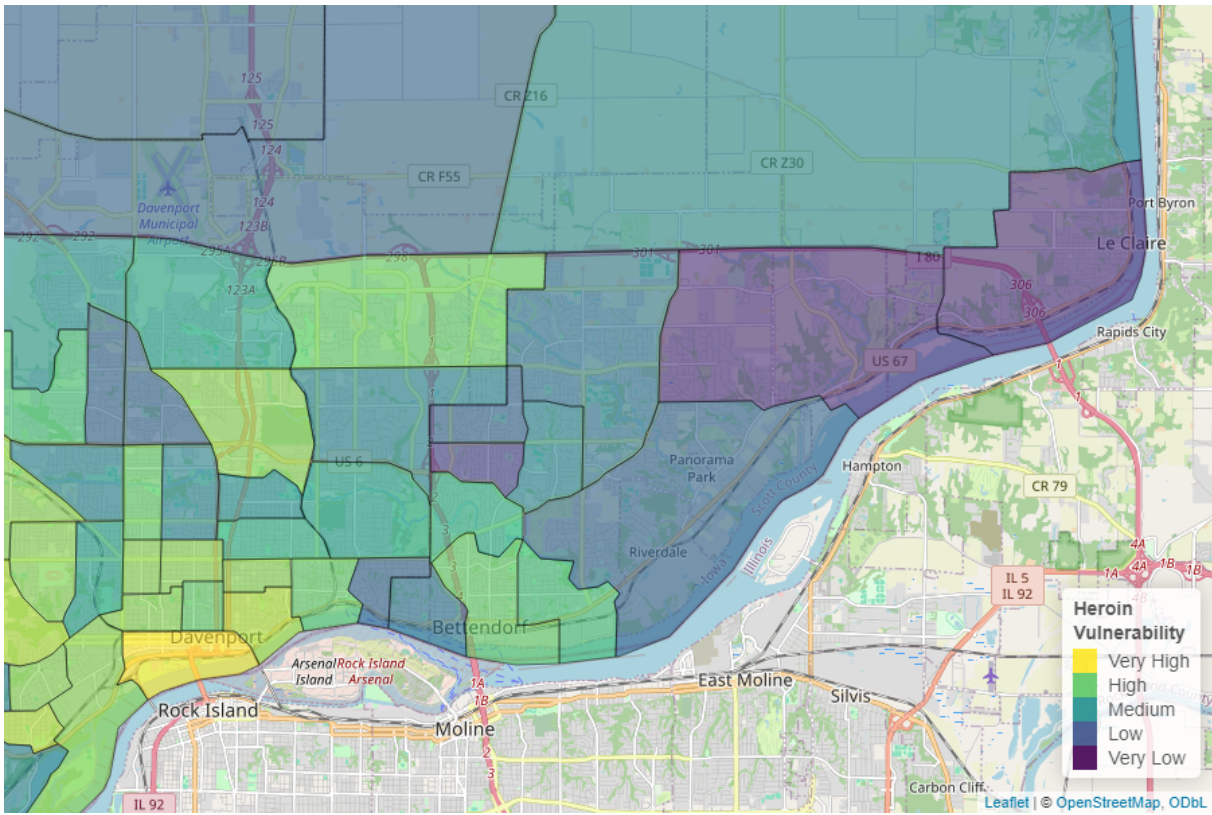


Figure 14: Heroin Vulnerability in Bettendorf

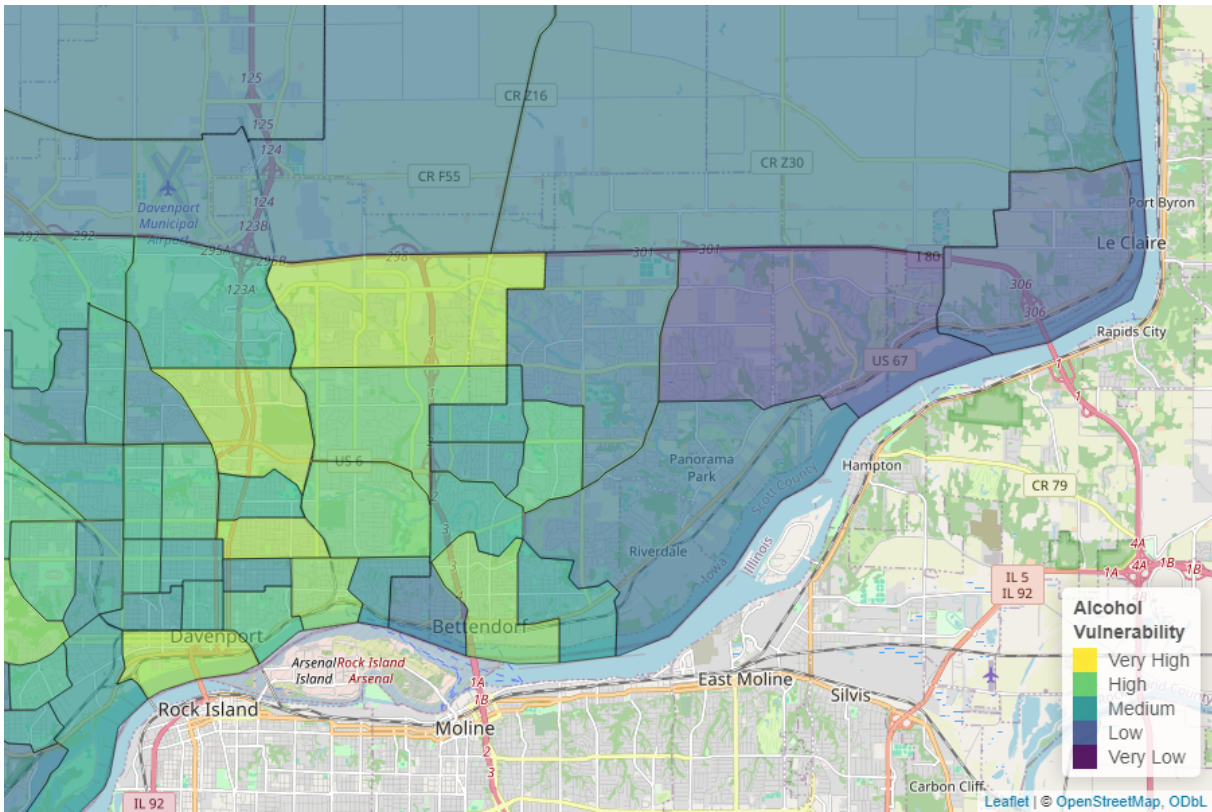


Figure 15: Alcohol Vulnerability in Bettendorf

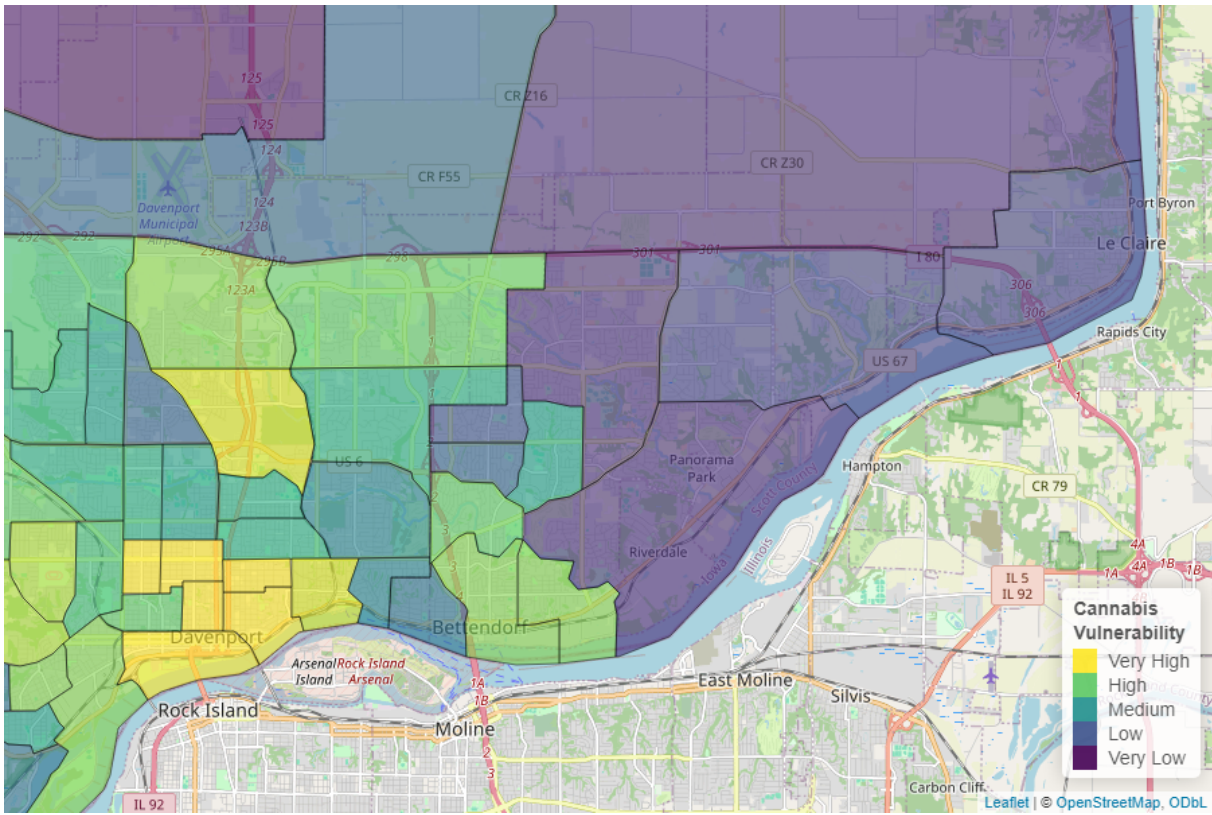


Figure 16: Cannabis Vulnerability in Bettendorf

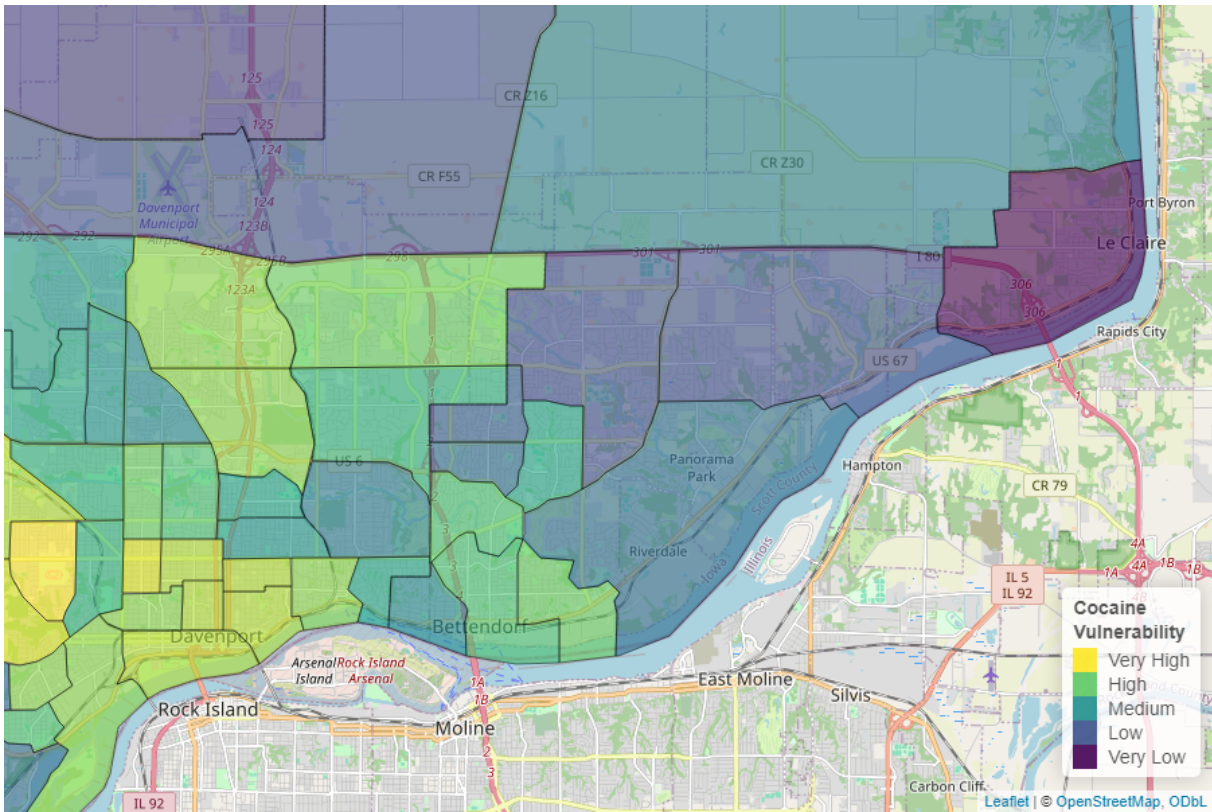


Figure 17: Cocaine Vulnerability in Bettendorf

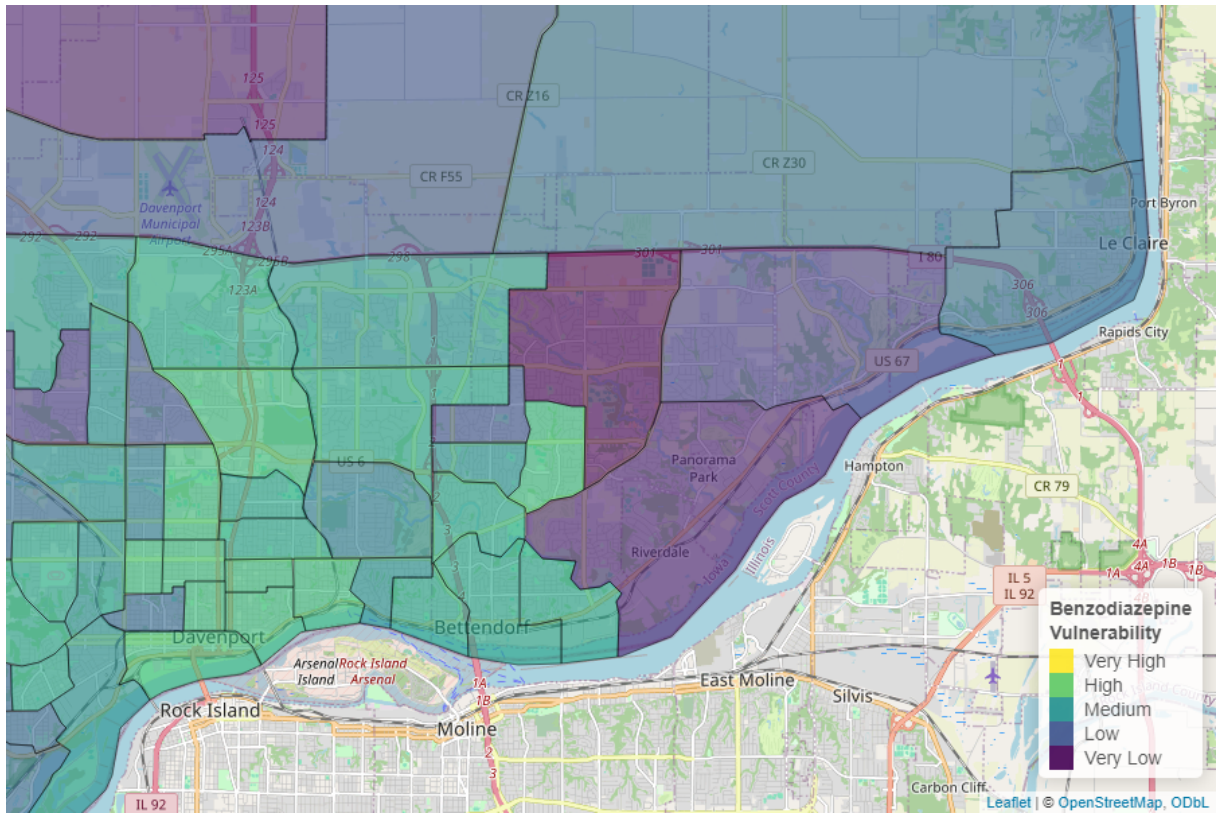


Figure 18: Benzodiazepine Vulnerability in Bettendorf

Social Determinants of Health

In addition to the neighborhood vulnerability maps above, the Public Science Collaborative created a neighborhood map to understand health disparities in Bettendorf that draws on well-established social determinants of health. By social determinants, we refer to social and environmental risks that can affect someone's overall health and well-being. For example, in places with high average levels of education and low unemployment rates, residents tend also to have better overall health (e.g. longer life span and more healthy years of living). In places where average incomes are low and the rates of single parenting are high, people often have worse health, including higher death rates due to overdose and fewer healthy days. Knowing something about where the social determinants of health support well-being and where their scarcity decreases well-being can help local community organizations and governments to target better investments to reduce health disparities between neighborhoods. You can interactively explore social determinants of health across the state and look at individual components on [PSC's SDOH Dashboard](#).⁶

Our index of social determinants of health looks at overall health vulnerability, education, health insurance coverage, English proficiency, unemployment, and poverty. According to the social determinants we considered, unemployment is the biggest risk factor for poor health in Bettendorf. Overall, health risks in Bettendorf are about equal to the average for communities in Iowa.

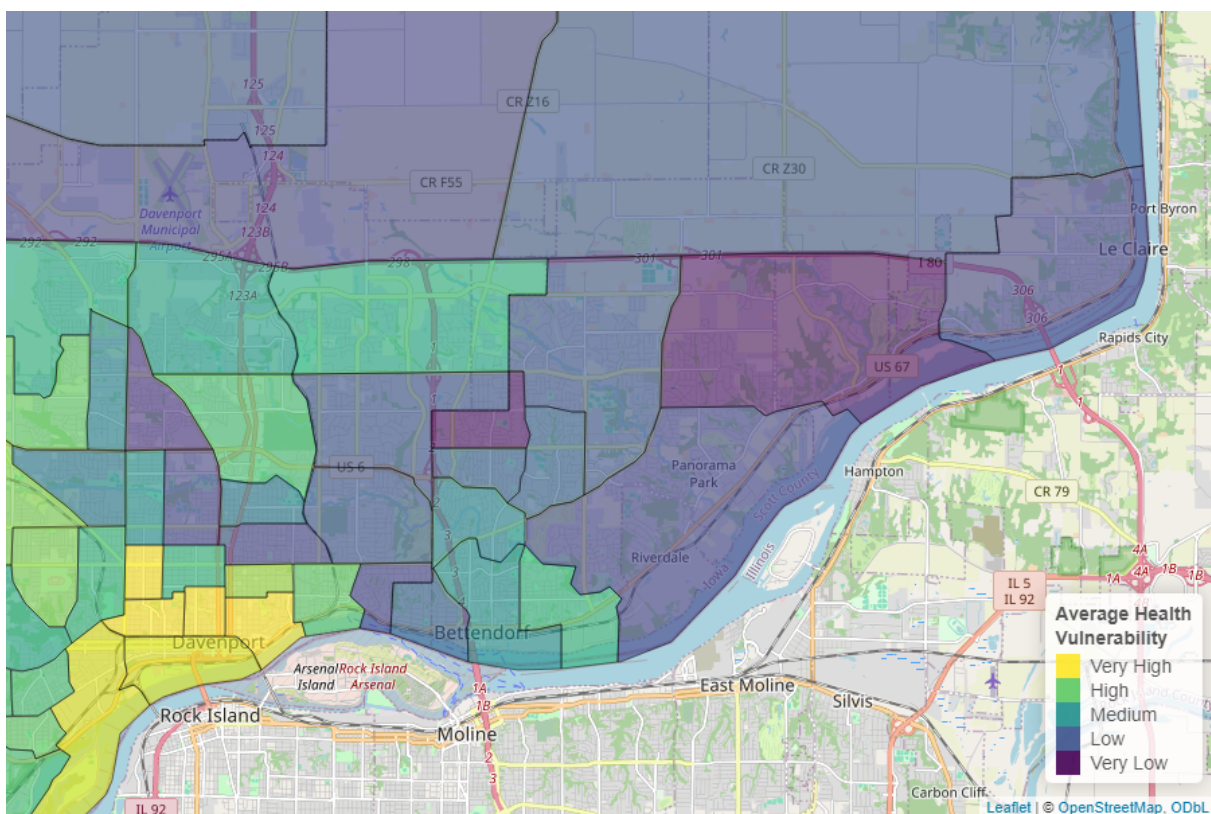


Figure 19: Overall Health Vulnerability in Bettendorf

⁶<https://publicsciencecollaborative.shinyapps.io/sdoh/>

Appendix 1: Data Used in this Report

The data used in this report is a variety of recovery, community, and well-being resources that can be useful to individuals in recovery. To collect this data, we used various public resources, including government agencies and recovery websites. The data sources can be found in the table below. Our collection of data may not cover every single resource in Iowa, but it represents the primarily publicly available data found through our research and following the advice of substance use experts and researchers. This data was acquired through several means, including simple downloads, manual data entry, computer reading of PDF files, scraping websites, and utilization of APIs. There are also several resource finder tools to help find a specific resource in an area, including the [Recovery Resource Finder](#),⁷ [Well-Being Resource Finder](#),⁸ and [Physical Activity Resource Finder](#).⁹

Table 3: Recovery Data Sources

Resource Type	Source
Beach	Iowa DNR
Library	Institute of Museum and Library Services
Playground	OpenStreetMap
Public Park	OpenStreetMap
Trail	OpenStreetMap
Outdoor Basketball Court	OpenStreetMap
Football Field	OpenStreetMap
Soccer Field	OpenStreetMap
Baseball/Softball Diamond	OpenStreetMap
Tennis Court	OpenStreetMap
Pickleball Court	OpenStreetMap
Outdoor Volleyball Court	OpenStreetMap
Other Sports Facilities	OpenStreetMap
Family Support Specialist	Wellpoint Peer Support Inventory
Mutual Aid Meeting	Various Websites
Peer Support Provider	Wellpoint Peer Support Inventory
Recovery Organizations (Community and Collegiate)	Manual Addition
SUD Recovery Coach	Wellpoint Peer Support Inventory
Lake	Iowa DNR
Access Center	Manual Addition
Drug Drop-off Site	Iowa Geodata
Hospital	Iowa Medicaid Provider Search
MAT Site	SAMHSA
Mental & Behavioral Health Center	Iowa DHHS
Rural Health Clinic	Iowa Association of Rural Health Clinics
SUD or Gambling Treatment Center	Iowa DHHS
VA Hospital or Clinic	U.S. Department of Veterans Affairs
YMCA	Heartland YMCA Alliance
Childcare Provider	Iowa DHHS
Recovery Housing	Iowa DHHS
Section 8 Housing	U.S. Department of Housing and Urban Development
Shelter	Homeless Shelters Directory
Intimate Partner Violence Program	Iowa Coalition Against Domestic Violence
Workforce Development Office	Iowa Workforce Development
College or University	Wikipedia
School	Iowa Department of Education
Place of Worship	ExpertGPS.com
State Park	Iowa DNR

⁷<http://public-science.org/recoveryresources>

⁸<http://public-science.org/communityresources>

⁹<http://public-science.org/physicalactivity>

Appendix 2: Mutual Aid Meetings Near Bettendorf

Table 4: Mutual Aid Meetings in Bettendorf

Meeting Type	Group	Address	Weekly Meeting #
Alcoholics Anonymous	Bettendorf Group	2204 Grant St, Bettendorf, IA 52722, USA	27
Alcoholics Anonymous	Big Book Study Group	1809 Mississippi Blvd, Bettendorf, IA 52722, USA	1
Alcoholics Anonymous	Saturday 6am Closed Discussion	2204 Grant St, Bettendorf, IA 52722, USA	1
Alcoholics Anonymous	Three Legacies Group	1809 Mississippi Blvd, Bettendorf, IA 52722, USA	1
Alcoholics Anonymous	W.E T.W.O	1401 Central Ave, Bettendorf, IA 52722, USA	1
Al-Anon	Bettendorf AFG	2204 Grant St, Bettendorf, IA, 52722, USA	1
Celebrate Recovery	Pleasant View Celebrate Recovery	6400 Crow Creek Road, Bettendorf, IA 52722	1
Narcotics Anonymous	Life After Drugs	1330 13th St, Moline, IL 61265, USA	1
Narcotics Anonymous	The Second Chance	4501 7th Ave, Rock Island, IL 61201, USA	3

Appendix 3: Resources Near Bettendorf

Table 5: Recovery Resources in Bettendorf

Resource Type	Name	Address
Baseball/Softball Diamond	Crow Creek Batting Cages	Bettendorf, Scott County, Iowa, 52722, United States
Baseball/Softball Diamond	35 Baseball/Softball Diamonds	Bettendorf, Scott County, Iowa, 52722, United States
Outdoor Basketball Court	40 Outdoor Basketball Courts	Bettendorf, Scott County, Iowa, 52722, United States
Childcare Provider	APK Early Learning Academy Bettendorf	2711 Happy Joe Drive, Bettendorf, IA, 52722
Childcare Provider	Ayoade Tayewo	3330 Clearwater DR, Bettendorf, IA, 52722
Childcare Provider	B4 School Learning Center	2400 Middle Rd, Bettendorf, IA, 52722
Childcare Provider	Carebear Day Care	3602 Wakonda DR, Bettendorf, IA, 52722
Childcare Provider	Daffy's Daycare	617 28th ST, Bettendorf, IA, 52722
Childcare Provider	Erica Clifton	1420 30th ST, Bettendorf, IA, 52722
Childcare Provider	Growing With Grace Early Learning Center	3740 Utica Ridge Road Suite A, Bettendorf, IA, 52722
Childcare Provider	Hand In Hand	3860 Middle Rd, Bettendorf, IA, 52722
Childcare Provider	Hugs Kids Daycare	3211 Maplecrest RD, Bettendorf, IA, 52722
Childcare Provider	Jami Spriet	1828 Sunset DR, Bettendorf, IA, 52722
Childcare Provider	Jana Michaelis	1403 Hillside DR, Bettendorf, IA, 52722
Childcare Provider	Jennifer Abbott	631 Jones CT, Bettendorf, IA, 52722
Childcare Provider	Joanne Anderson	3907 Utica Ridge RD, Bettendorf, IA, 52722
Childcare Provider	Jodie Mcwilliams	3202 Westmar DR, Bettendorf, IA, 52722
Childcare Provider	KinderCare Bettendorf East	2986 Victoria ST, Bettendorf, IA, 52722
Childcare Provider	Lindsay Asta	5361 Century Heights AVE, Bettendorf, IA, 52722
Childcare Provider	Liza Wellman	3114 Dundee LN, Bettendorf, IA, 52722
Childcare Provider	Lourdes Little Lancers	1414 Mississippi Blvd, Bettendorf, IA, 52722
Childcare Provider	Lynell Terrell	939 Summit Hills DR, Bettendorf, IA, 52722
Childcare Provider	Morning Star Academy	1426 Tanglefoot Lane, Bettendorf, IA, 52722
Childcare Provider	Natalie Hoke	1014 Jones ST, Bettendorf, IA, 52722
Childcare Provider	New Day Child Care Center	1330 Spruce Hills Dr, Bettendorf, IA, 52722
Childcare Provider	Nicole Phipps	4003 Elm ST, Bettendorf, IA, 52722
Childcare Provider	Northeastern Academy and Early Learning Center	3340 Utica Ridge RD, Bettendorf, IA, 52722
Childcare Provider	Our Savior Lutheran Preschool	3775 Middle Rd, Bettendorf, IA, 52722
Childcare Provider	Redeemer Preschool	1109 Tanglefoot Lane, Bettendorf, IA, 52722
Childcare Provider	Rivermont Collegiate	1821 Sunset Dr, Bettendorf, IA, 52722
Childcare Provider	Sara Young	2565 Crow Creek RD, Bettendorf, IA, 52722
Childcare Provider	Shakeyse Lee	724 Brown ST, Bettendorf, IA, 52722
Childcare Provider	St John Vianney Preschool	4097 18th St, Bettendorf, IA, 52722
Childcare Provider	Tabitha Donaldson	2922 Magnolia DR, Bettendorf, IA, 52722
Childcare Provider	Tamarra Home Daycare LLC	2211 Parkway DR, Bettendorf, IA, 52722
Childcare Provider	Tenea Harris	1002 Hillside DR, Bettendorf, IA, 52722
Childcare Provider	The Bettendorf KinderCare #301113	2330 Tech DR, Bettendorf, IA, 52722
Childcare Provider	The Red Apple Child Care Center	3265 Ridge Point, Bettendorf, IA, 52722
Childcare Provider	YMCA IMV Bettendorf	3800 Tanglefoot LN, Bettendorf, IA, 52722
Childcare Provider	YMCA IMV Forest Grove Kids Club	6100 Forest Grove DR, Bettendorf, IA, 52722
Childcare Provider	YMCA IMV Grant Wood Kids Club	1423 Hillside Dr, Bettendorf, IA, 52722
Childcare Provider	YMCA IMV Hoover Kids Club	3223 S Hampton DR, Bettendorf, IA, 52722
Childcare Provider	YMCA IMV Hopewell Kids Club	3900 Hopewell, Bettendorf, IA, 52722
Childcare Provider	YMCA IMV Paul Norton Kids Club	4485 Greenbrier Dr, Bettendorf, IA, 52722
Childcare Provider	YMCA IMV Pleasant View Kids Club	6333 Crow Creek Rd, Bettendorf, IA, 52722
Childcare Provider	YMCA IMV Riverdale Heights Kids Club	2125 Devils Glenn RD, Bettendorf, IA, 52722
Drug Drop-off Site	Bettendorf Police Department	1609 State Street, Bettendorf, IA, 52722
Drug Drop-off Site	Hy-Vee Pharmacy	2900 Devils Glen Rd, Bettendorf, IA, 52722
Family Support Specialist	Community Regional Center	865 Lincoln Rd, Ste 500, Bettendorf, IA 52722

Football Field	1 Football Field	Bettendorf, Scott County, Iowa, 52722, United States
Hospital	Sbh Davenport Llc	770 Tanglefoot Lane, Bettendorf, Ia 52722
Hospital	Trinity Bettendorf	4500 Utica Ridge Road, Bettendorf, Ia 52722
Library	Bettendorf Public Library Information Center	2950 Learning Campus Dr, Bettendorf, IA,
Mental & Behavioral Health Center	New Choices, Inc.	2501 18th Street, Bettendorf, IA
Other Sports Facilities	5 Other Sports Facilities	Bettendorf, Scott County, Iowa, 52722, United States
Other Sports Facilities	1 Other Sports Facility	Scott County, Iowa, 52767, United States
Public Park	Crow Creek Park	No Address in Data
Public Park	Devils Glen Park	No Address in Data
Public Park	Eagles Landing Park	No Address in Data
Public Park	Ed Scheck Park	No Address in Data
Public Park	Edgewood Park	No Address in Data
Public Park	Emily Dickenson Garden	No Address in Data
Public Park	Family Museum Bridge	No Address in Data
Public Park	Field Sike Park	No Address in Data
Public Park	Forest Grove Park	No Address in Data
Public Park	Friendship Park	No Address in Data
Public Park	Hollow View Park	No Address in Data
Public Park	Hoover Park	No Address in Data
Public Park	Kiwanis Park	No Address in Data
Public Park	Leach Park	No Address in Data
Public Park	Learning Campus	No Address in Data
Public Park	Library Greenspace	No Address in Data
Public Park	Lincoln Park	No Address in Data
Public Park	McLamarrah Park	No Address in Data
Public Park	McManus Park	No Address in Data
Public Park	Meier Park	No Address in Data
Public Park	Middle Park	No Address in Data
Public Park	Optimist Park	No Address in Data
Public Park	PV Ampitheater	No Address in Data
Public Park	Pigeon Creek Park	No Address in Data
Public Park	Sunny Crest Park	No Address in Data
Public Park	Veteran's Memorial Park	No Address in Data
Public Park	Wessel Park	No Address in Data
Public Park	Wyndham Pond	No Address in Data
Pickleball Court	6 Pickleball Courts	Bettendorf, Scott County, Iowa, 52722, United States
Place of Worship	All Seasons Baptist Church	No Address in Data
Place of Worship	Apostolic Assembly	No Address in Data
Place of Worship	Armenian Apostolic Church	No Address in Data
Place of Worship	Asamblea Church	No Address in Data
Place of Worship	Asbury Church	No Address in Data
Place of Worship	Bettendorf Christian Church	No Address in Data
Place of Worship	Bettendorf Nazarene Church	No Address in Data
Place of Worship	Bettendorf Presbyterian Church	No Address in Data
Place of Worship	Broadview United Church	No Address in Data
Place of Worship	Church of Nazarene	No Address in Data
Place of Worship	Community of Joy Church	No Address in Data
Place of Worship	First Assembly of God Church	No Address in Data
Place of Worship	First Baptist Church	No Address in Data
Place of Worship	Harmony Hills Baptist Church	No Address in Data
Place of Worship	Jehovahs Witnesses Congregation	No Address in Data
Place of Worship	Korean United Church	No Address in Data
Place of Worship	Lourdes Memorial Church	No Address in Data
Place of Worship	Our Lady of Lourdes Catholic Church	No Address in Data
Place of Worship	Our Savior Lutheran Church	No Address in Data
Place of Worship	Pleasant View Church	No Address in Data
Place of Worship	Praise Fellowship	No Address in Data
Place of Worship	Quad City Korean Community Church	No Address in Data

Place of Worship	Redeemer Lutheran Church	No Address in Data
Place of Worship	Reformed Church of the Latter Day Saints	No Address in Data
Place of Worship	Reorganized Church of Jesus Christ of Latter Day Saints	No Address in Data
Place of Worship	River of Life Church	No Address in Data
Place of Worship	Riverview Church	No Address in Data
Place of Worship	Saint Francis Monastery	No Address in Data
Place of Worship	Saint James Church	No Address in Data
Place of Worship	Saint John Vianney Church	No Address in Data
Place of Worship	Saint Peters Episcopal Church	No Address in Data
Place of Worship	Summit Church (historical)	No Address in Data
Place of Worship	The Valley Church	No Address in Data
Place of Worship	Trinity Lutheran Church	No Address in Data
Place of Worship	United Methodist Church	No Address in Data
Playground	29 Playgrounds	No Address in Data
School	Bettendorf High School	3333 18th Street, Bettendorf, IA, 52722
School	Bettendorf Middle School	2030 Middle Road, Bettendorf, IA, 52722
School	Grant Wood Elementary School	1423 Hillside Dr, Bettendorf, IA, 52722
School	Herbert Hoover Elementary School	3223 South Hampton Drive, Bettendorf, IA, 52722
School	Mark Twain Elementary School	1620 Lincoln Rd, Bettendorf, IA, 52722
School	Neil Armstrong Elementary School	3311 Central Avenue, Bettendorf, IA, 52722
School	Paul Norton Elementary School	4485 Greenbrier Dr, Bettendorf, IA, 52722
School	Hopewell Elementary	3900 Hopewell Ave, Bettendorf, IA, 52722
School	Pleasant View Elementary School	6333 Crow Creek Road, Bettendorf, IA, 52722
School	Riverdale Heights Elem School	2125 Devils Glen Road, Bettendorf, IA, 52722
School	Lourdes Catholic School	1453 Mississippi Blvd, Bettendorf, IA, 52722
School	Morning Star Academy	1426 Tanglefoot Ln, Bettendorf, IA, 52722
School	Rivermont Collegiate	1821 Sunset Drive, Bettendorf, IA, 52722
Section 8 Housing	Luther Heights	3116 Devils Glen Road, Bettendorf, IA, 52722
Section 8 Housing	Luther Knoll	3264 Palmer Hills Ct, Bettendorf, IA, 52722
Section 8 Housing	Luther Manor-Luther Towers	Luther Manor 3118 Devils Glen Rd, Luther manor, Bettendorf, IA, 52722
Section 8 Housing	Spruce Hills Village	2380 Tech Dr, Bettendorf, IA, 52722
Soccer Field	13 Soccer Fields	Bettendorf, Scott County, Iowa, 52722, United States
SUD or Gambling Treatment Center	Eagle View Behavioral Health	770 Tanglefoot Lane, Bettendorf, IA, 52722, United States
SUD or Gambling Treatment Center	Family Counseling & Psychology Center, PC	2485 Tech Drive, Bettendorf, IA, 52722, United States
SUD or Gambling Treatment Center	The Abbey Addiction Treatment Center	1401 Central Ave., Bettendorf, IA, 52722, United States
SUD or Gambling Treatment Center	Vera French Community Mental Health Center	852 Middle Road, Davenport, IA, 52806, United States
Tennis Court	39 Tennis Courts	Bettendorf, Scott County, Iowa, 52722, United States
Tennis Court	1 Tennis Court	Scott County, Iowa, 52767, United States
Outdoor Volleyball Court	3 Outdoor Volleyball Courts	Bettendorf, Scott County, Iowa, 52722, United States
YMCA	Bettendorf Family YMCA	3800 Tanglefoot Ln, Bettendorf, IA 52722
YMCA	YMCA Sports Center	2222 Middle Rd, Bettendorf, IA 52722