



Recovery Iowa - Iowa City 360

August, 2022



Report provided to the Iowa Department of Public Health

This project was supported by the Iowa Department of Public Health, Bureau of Substance Abuse (IDPH) via a sub-ward from the Substance Abuse and Mental Health Services (SAMHSA) of the U.S. Department of Health and Human Services (HHS) as part of a financial assistance award totaling 350,000 with 100 percent funded by SAMHSA/HHS. The contents are those of the author(s) and do not necessarily represent the official views of, nor an endorsement by, IDPH, SMHSA/HHS, or the U.S. Government



Contents

1 Overview	3
2 What is Recovery?	3
3 What is a Recovery Community Center?	3
4 Is Your Community Recovery Ready?	4
5 What Peer Support Meetings are Available in Your Area?	5
6 What Recovery Resources Are Available in Your Area?	6
7 What Community Resources Are Available in Your Area?	7
8 Which Neighborhoods in Your Community Need Additional Health Resources and Support?	8
9 What's Driving Health Disparities in Your Community?	11
10 APPENDIX 1: Data Used in this Report	12
10.1 Recovery Ready Community Index (RRCI)	12
10.2 PSC Meeting Finder Tool	12
10.3 PSC Resource Recovery Tool	14
10.4 PSC Community Resource Locator Tool	15
10.5 Substance Use Vulnerability Index	16
10.6 Social Determinants of Health Index	18
11 Appendix 2: Peer Support Contacts in Your Area	19
12 Appendix 3: Recovery Resources in Your Area	20
13 Appendix 4: Community Resources in Your Area	23

Overview

At the request of the Iowa Department of Public Health, Bureau of Substance Abuse, the Public Science Collaborative (PSC) developed community-specific reports to support recovery efforts in Iowa. Recognizing the need to strengthen substance use recovery efforts throughout the state, we identified a large number of existing recovery-oriented resources in Iowa City, which we describe and map in the pages that follow. We developed additional maps to identify at-risk neighborhoods that will benefit from targeted health interventions and additional community resources. For additional questions or information about this report, the data tools described, or the Public Science Collaborative, please reach out to the principal investigators of this study, Dr. Shawn Dorius at sdorius@iastate.edu, or Dr. Cassandra Dorius at cdorius@iastate.edu.

What is Recovery?

Though substance use recovery is an evolving concept that has been defined in a number of ways over the years, an emerging consensus is that recovery is a voluntary path toward improved personal well-being coupled with a diminished risk of substance use relapse. As noted by Bill White (2007):

Recovery is the experience through which individuals, families, and communities impacted by severe alcohol and other drug (AOD) problems utilize internal and external resources to voluntarily resolve these problems, heal the wounds inflicted by AOD related problems, actively manage their continued vulnerability to such problems, and develop a healthy, productive, and meaningful life.

In White's view, resources help individuals, families, and communities in two ways. First, they help address alcohol and other drug-related problems (for example, addiction, unemployment, housing instability, family separation), and second, they support health, productivity, and meaning in post-treatment life. The appeal of this view is that it is explicit and direct in its recognition that recovery involves not only internal resources such as mental, emotional, and genetic factors but also external ones. In thinking about where to focus federal and state resources to develop a network of community-based recovery centers in Iowa, the key question is, "What kinds of external resources matter most for sustained SUD recovery?"

If we knew which resources were most helpful to long-run recovery, we could target towns and cities with large stocks of 'recovery resources' to grow Recovery Community Centers

What is a Recovery Community Center?

Recovery Community Centers (RCCs) represent low-cost, member-driven, voluntarist, locally managed, and community-engaged pathways to sustainable recovery for people with substance use disorder, or SUD. RCCs accomplish these goals by linking people to existing resources and infrastructure and promoting a vibrant recovery culture based in a **physical community center where people in recovery can visit, engage with others in recovery, and access resources**. RCCs are an innovative, safe, and helpful source of community recovery support that provides linkages to existing local services and resources that support recovery for people with a substance use or mental health disorder. RCCs support recovery by helping people in the community who have a history of substance use to develop recovery capital, the personal resources that enable people to live healthy, productive, and community engaged lives. RCCs do this by connecting members of the recovery community, called peers, with different types of services such as recovery coaching, medication assisted treatment, connection to employment services and child care, recovery-oriented housing, or education and workforce development training services. Located in the heart of the community, Recovery Community Centers improve the ability of the local recovery community to care for one another, and they also help destigmatize the lives of people in recovery.

The RCC model of recovery is validated by academic studies and is promoted by both the SUD community and public health officials. However, finding the right communities for RCC development in Iowa has proven difficult, underscoring the fact that Iowa is one of just a few states in the U.S. that has yet to adopt the recovery community model.

Is Your Community Recovery Ready?

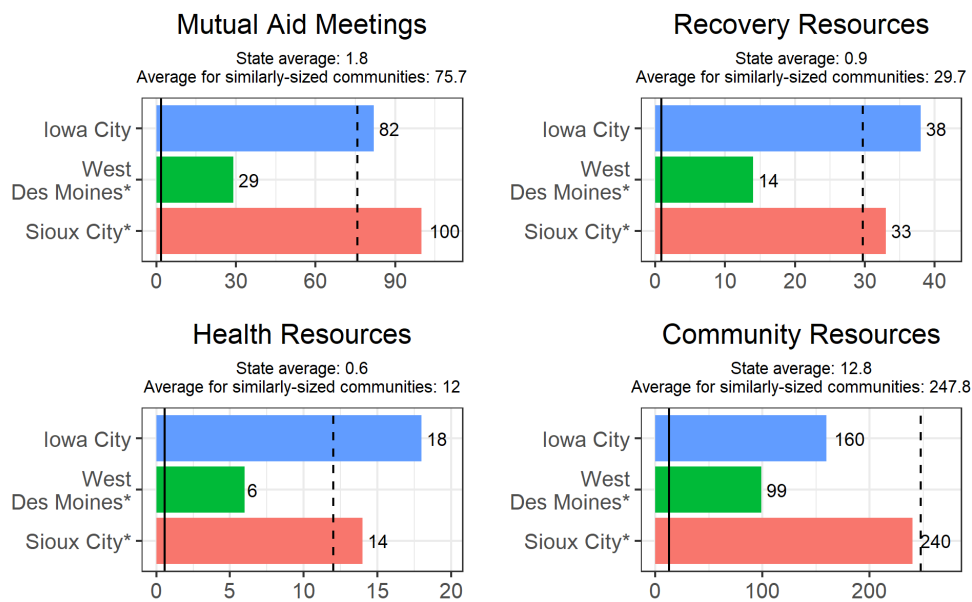
What is the RRCI and how was it created? We consulted scientific literature on substance use recovery and engaged key stakeholders who work directly with people in recovery around the country and in Iowa. This helped us to identify 17 unique community-based resources that we collected for almost all of Iowa’s 944 cities and towns. In total, we found nearly 16,000 community features that support recovery. We mapped and analyzed these resources so we could identify a short list of ‘Recovery Ready’ communities across the state, culminating in the first-of-its-kind index: **The Recovery Ready Community Index (RRCI)**.

The RRCI encompasses four dimensions: breadth, depth, size, and strength. Breadth of recovery resources was measured by counting the number of different types of recovery resources in each county and community. For example, counting if there is at least one hospital, one treatment center, and one drug drop off location in town. Depth of recovery resources was measured by first counting the total number of resources in each category and then ranking cities accordingly. This gives added importance to places that have, for example, more than one medication assisted treatment provider and many different recovery houses in town. Size of local recovery culture was measured by the total number of weekly mutual aid and peer support meetings per week in each city (e.g. total number of NA and AA meetings). Finally, the strength of the recovery community was measured as the difference between the total number of weekly peer support meetings and the number of meetings expected, based upon the total population of each town. These four dimensions were used to create the Recovery Ready Community Index. The RRCI is the simple average of each town’s ranking across the four dimensions or recovery readiness. Places that ranked high on all four dimensions are labeled as especially recovery ready.

How recovery ready is your community? Are you well-positioned to support a Recovery Community Center in your community? Relative to all cities, Iowa City ranks low in terms of its recovery readiness. **According to the Recovery Ready Community Index (RRCI), Iowa City scored 30.5, placing it at 10th when compared with other Iowa cities** (Iowa’s RRCI state average is 32.7).

Another way to understand recovery resources in Iowa City is to compare them with those of the state average and other communities of similar size. This comparison is displayed in Figure 1, which compares Iowa City with West Des Moines and Sioux City. An average across all Iowa towns as well as the subset having a comparable population level are also included as a baseline for comparison.

Fig. 1. Recovery Ready Community Index: Comparison of Iowa City to Other Iowa Communities on ‘Recovery Readiness’



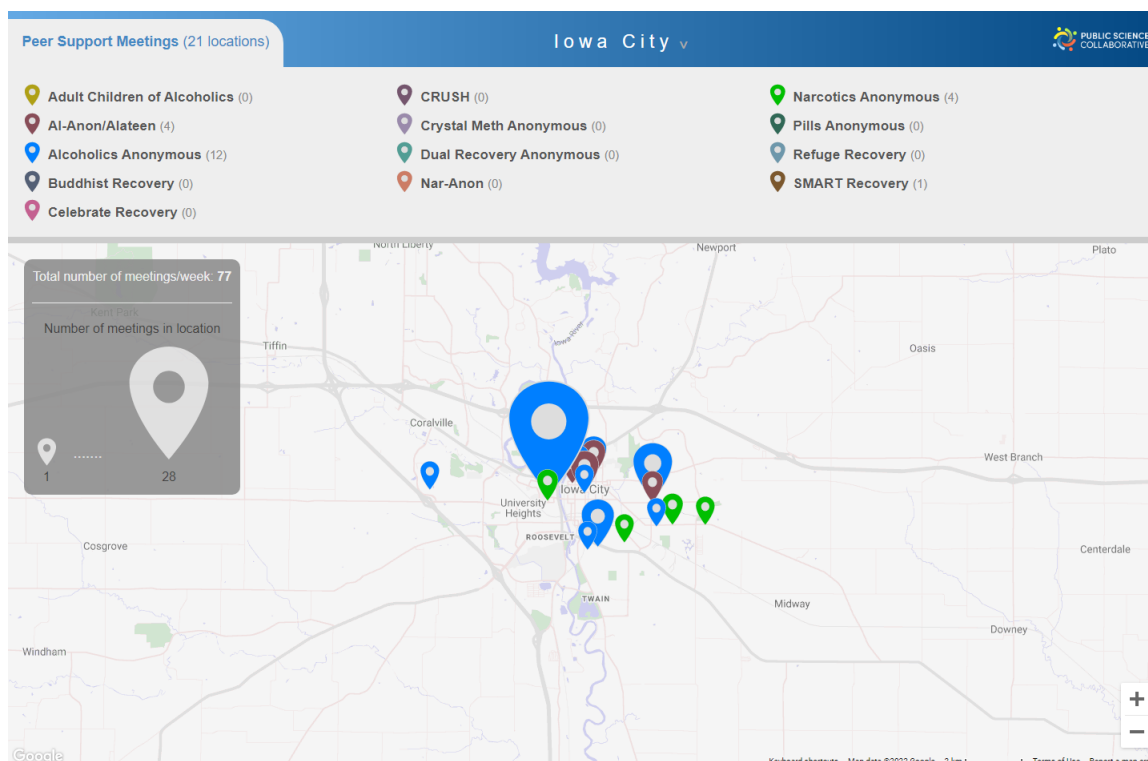
* The Iowa cities most comparable to Iowa City by population are West Des Moines and Sioux City.

** The solid vertical line represents the average for all 944 communities in Iowa and the dashed vertical line represents the average for Iowa communities with populations of more than 50,000 people.

What Peer Support Meetings are Available in Your Area?

Recovery meetings, such as Alcoholics and Narcotics Anonymous, play a significant role in facilitating the recovery process. Despite the importance of these meetings there is no coherent ‘one stop shop’ to find the meeting you need, when you need it. People usually need to go through several steps, such as searching for meetings on Google, or looking for a specific meeting time or place on a local listings’ website. It can be hard enough to connect with peer support during the best of times, but doubly difficult when you are in crisis and questioning your recovery. Magnifying the challenge of finding the right meeting at the right time is being new to a community, unfamiliar with the members of a local meeting, and being in a moment of duress.

Fig. 2. Peer Support Meetings in Iowa City



Note: Larger markers indicate the locations that host more than one meeting per week. For example, in Iowa City there are 82 total meetings hosted each week in the locations identified above.

We developed the PSC Meeting Finder tool above to make it easier to find local meetings. We do this by presenting a map-based list of meetings all throughout Iowa and we update the map every single day. It’s a simple interface that helps people to find the appropriate meetings nearby, right now. Users can filter meetings by time of day, day of week, or whether childcare is available, for example, to find the right meeting at the right time. Having a responsive design, PSC Meeting Finder Tool runs efficiently and quickly on many different kinds of computers and mobile devices such as smartphones. Figure 2 is a screen capture of the PSC Meeting Finder where you can see the location of all known peer support meetings in your community. A web version of this map is available at: <http://public-science.org/reportmaps/meetings/?city=Iowa%20City>. Note that the peer support data is updated regularly and may not exactly match Figure 2. A full listing of these resources is provided as a table with meeting, type, group name, number of meetings per week, and location of meetings in Appendix 2.

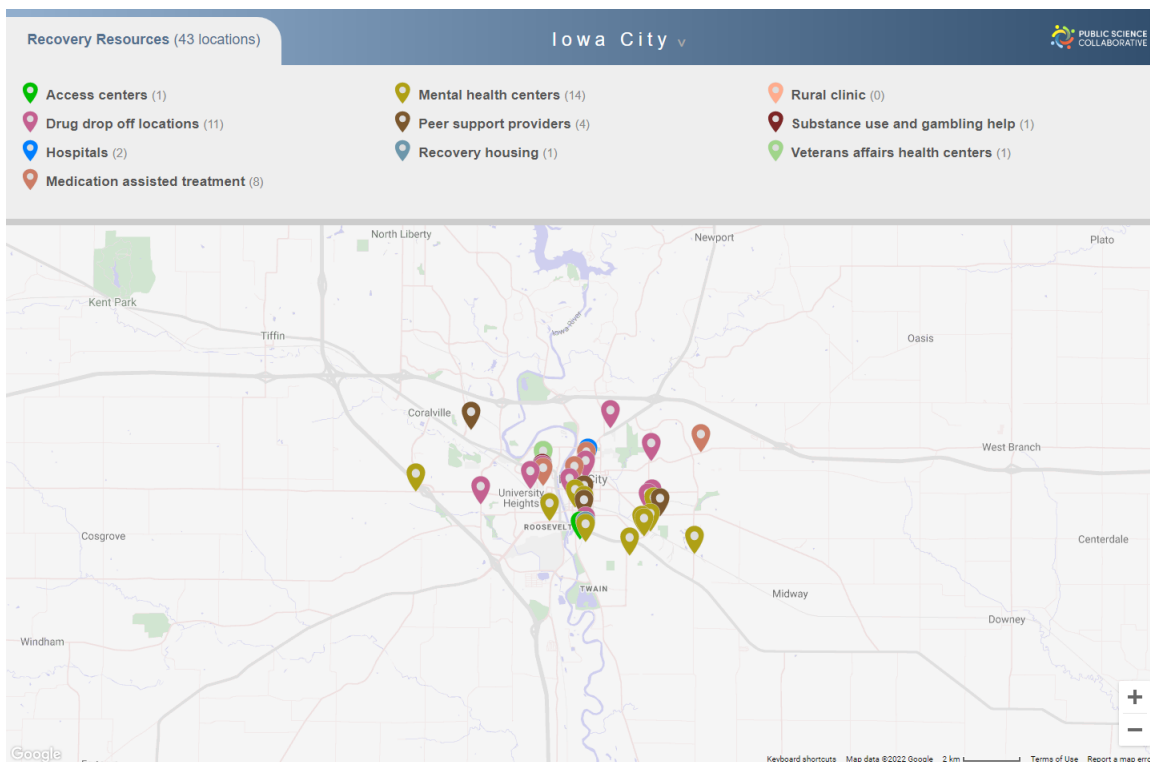
Iowa City has about 82 peer support meeting locations in a given week. Figure 2. indicates the location of these meetings as well as locations where there are few or no weekly meetings, which may help local peer support groups to identify new places to sponsor a meeting and support local recovery. The number of meetings held by each group is tabulated in the top panel of this figure indicating the prominence of different peer support organizations in the community.

What Recovery Resources Are Available in Your Area?

Despite their importance, community-based recovery resources can be hard to find. Whether a person is new to the community or a long-term resident, some resources remain unknown to many people in the community. The PSC Recovery Resource Locator aims to help solve this problem. Figure 3 is a screen capture of the PSC Recovery Resource Locator where you can see the location of some of the resources your community offers to its recovery community. A web version of this map is available at: <http://public-science.org/reportmaps/recoveryresources/?city=Iowa%20City>. A full listing of these resources is provided as a table with resource name, type, and location in Appendix 3.

Iowa City has 55 recovery resources available to support its residents in recovery from substance use disorders. These resources provide a variety of services and care to respond to the needs of individuals in the community. Drug drop off locations allow individuals to dispose of their unneeded prescription drugs to limit abuse of these substances. Medication assisted therapy helps alleviate withdrawal symptoms for individuals in recovery. Mental health resources are also an important resource in helping treat mental health challenges associated with SUD. Mutual aid and recovery housing groups are designed to provide a community of support to help address the material needs of people using substances. Finally, SUD treatment facilities and Veterans Affairs health clinics provide medical care to individuals using substances. These resources and others like them are tabulated in the top panel of Figure 3 to provide insight into strong and weak areas in community recovery resources.

Fig. 3. *Recovery Resources in Iowa City*

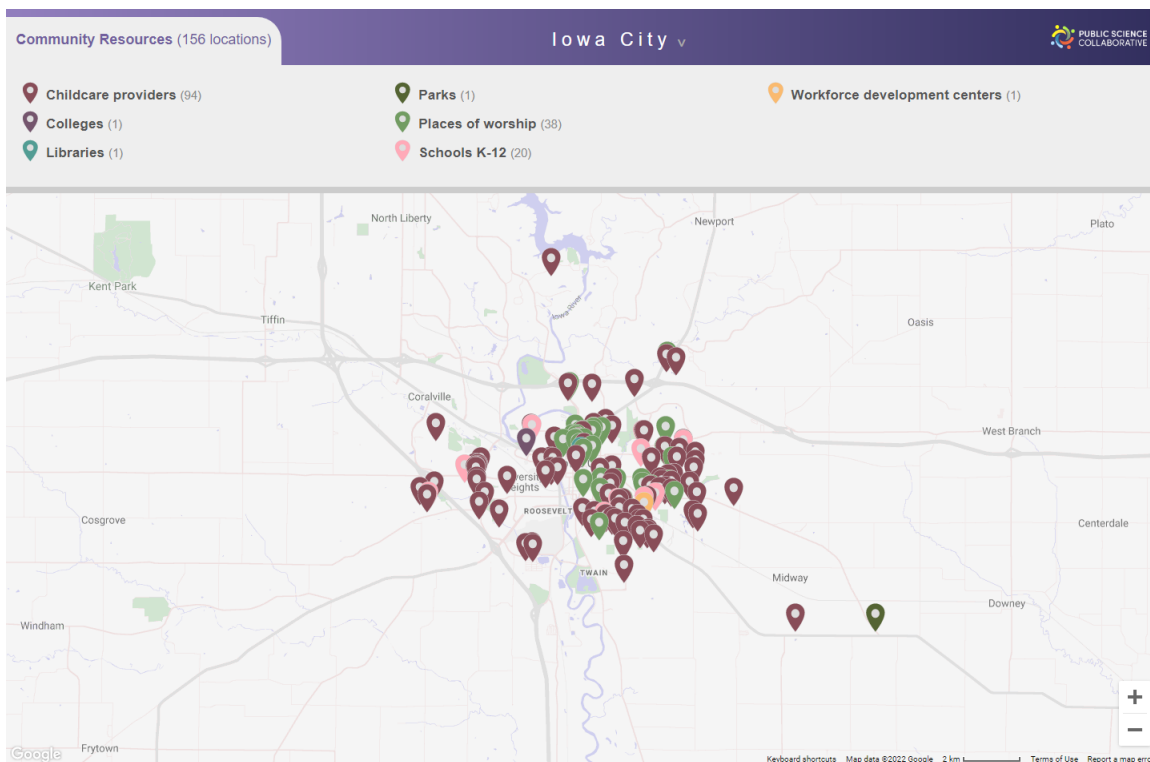


What Community Resources Are Available in Your Area?

In addition to peer support meetings and clinical care, people in recovery benefit from other community resources. For example, having easy access to parks and natural areas has been shown to support substance use recovery. Participation in community groups, including religious organizations, may be a source of strength and support for many people in recovery. We have identified many additional community assets that can help people in their own recovery journey. The state of Iowa has a wide range of public and private institutions and organizations dedicated to providing health and human services, support, and activities to improve quality of life and well-being of all Iowans. The PSC Community Resource Locator is a utility for discovering many of these resources. Figure 4 is a screen capture of the PSC Community Resource Locator where you can see the location of some of the resources your community offers to its recovery community. A web version of this map is available at: <http://public-science.org/reportmaps/communityresources/?city=Iowa%20City>. A full listing of these resources is provided as a table with resource name, type, and location in Appendix 4.

Iowa City has 162 community resources available for its residents to live their best lives and to support those in recovery from substance use disorders. These may include childcare providers, universities and technical colleges, libraries, parks, places of worship, K-12 schools, and workforce development centers. The number of each type of resource is broken down in Figure 4., highlighting areas of success and areas for growth in your community.

Fig. 4. *Community Resources in Iowa City*

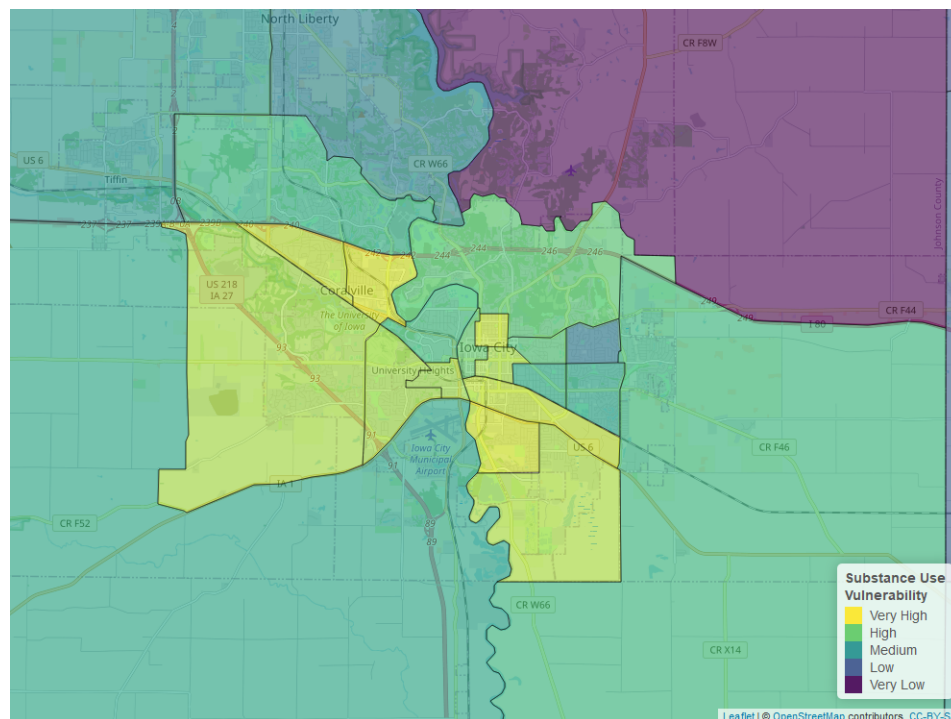


Which Neighborhoods in Your Community Need Additional Health Resources and Support?

The Public Science Collaborative has developed data resources to help community organizations, local governments, and public health practitioners to more effectively target substance use prevention, treatment, and recovery interventions to the places in greatest need of resources. Geographic ‘hot spots’ identify places where local residents are at especially high risk for substance use disorder. We estimated statistical models using administrative data from the Treatment Episode Admissions Dataset (TEDS-A) and the National Survey of Drug Use and Health (NSDUH) to measure significant relationships between substances of misuse and socio-demographic characteristics known to affect health equity and substance use vulnerability. Neighborhood characteristics associated with each substance (e.g. methamphetamine, benzodiazepines) were overlaid with Census Bureau estimates of these same neighborhood characteristics, by census tract. Once mapped, these data help us to identify places with especially high concentrations of at-risk characteristics in need of targeted resources to reduce health inequities. You can learn more about the underlying models for this index in Appendix 1. The resulting maps are included in the pages that follow, and interactive maps can be found online at https://publicsciencecollaborative.shinyapps.io/iowa_sdoh/ and https://publicsciencecollaborative.shinyapps.io/ia_substance_use_vulnerability/.

Towns and cities in Iowa typically have neighborhoods with distinctive risk profiles, with some at especially high (or low) risk of harmful use of a specific substance, such as Heroin, Opioids, or Methamphetamine. Identification of these locations can guide public health outreach efforts and enable more targeted, substance-specific interventions based upon known neighborhood risk factors. To do so, we have developed a city map to identify overall substance use vulnerability, which can be used to support generalized substance use prevention, treatment, and recovery interventions (Figure 5). Maps pertaining to Opioid, Heroin, and Methamphetamine use are included to help identify trends specific to these specific drugs (Figures 6, 7, 8). Typically, areas high in overall substance use vulnerability are also high in substance use. When this is the case, it suggests that general health resources would benefit these places and their residents. If a particular neighborhood is high in a specific substance, drug-specific interventions may be an effective tool in supporting the area.

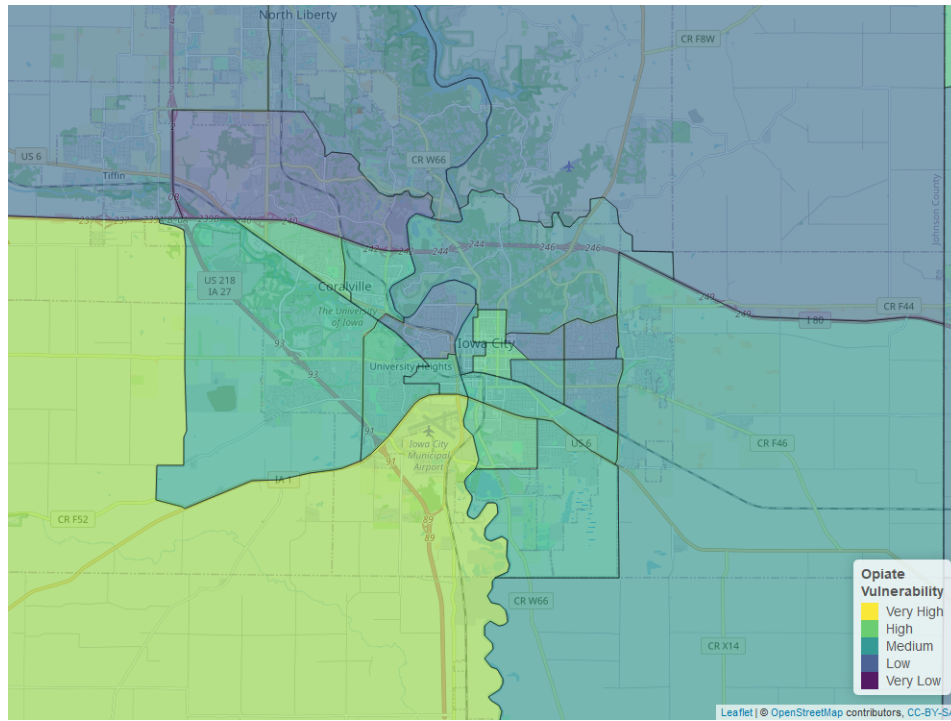
Fig. 5. *Neighborhood Vulnerability Index, All Substance Use*



Overall substance use vulnerability varies by neighborhood in Iowa City, but is generally higher than other communities in Iowa (see Figure 5). Due to neighborhood vulnerability, specific neighborhoods may benefit from a targeted approach rather than community wide efforts. Community-wide vulnerability was highest for heroin,

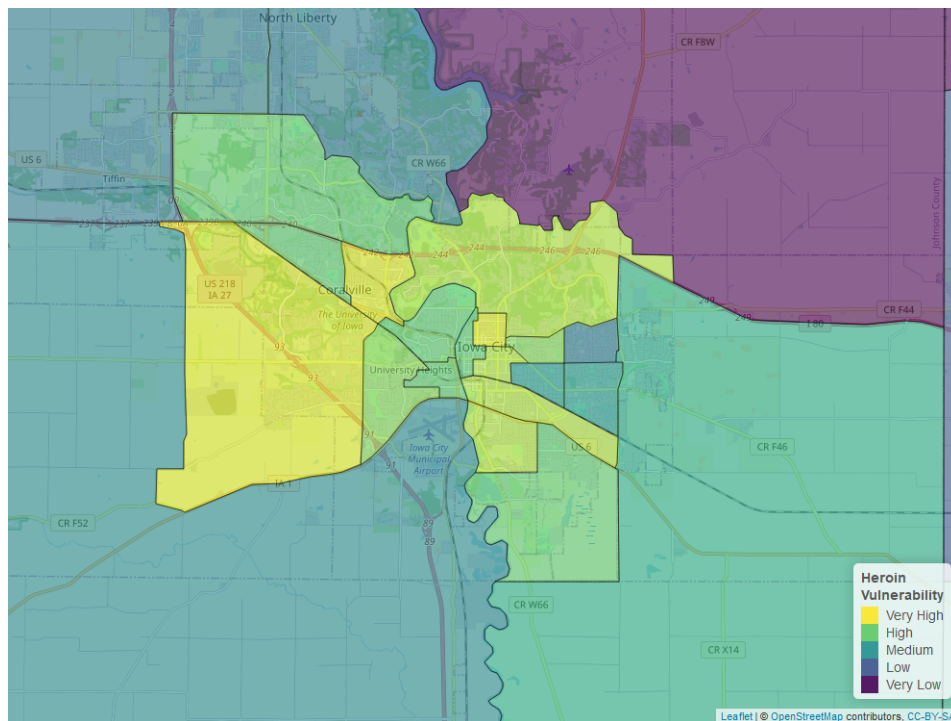
and a breakdown for each substance is shown in the figures below.

Fig. 6. Neighborhood Vulnerability Index, Opioid Use



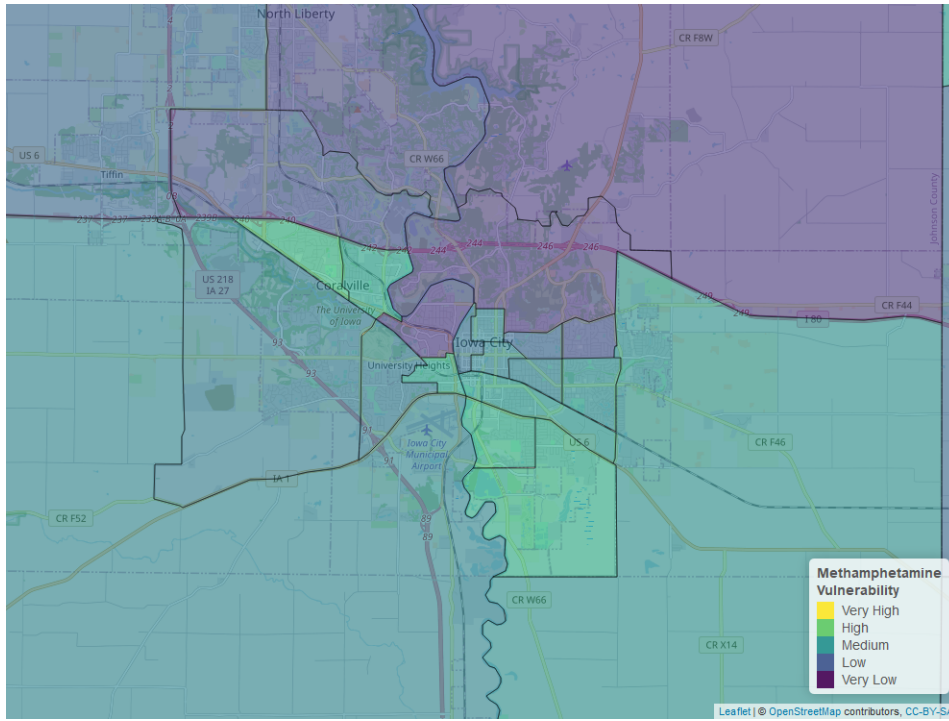
The overall opioid risk in Iowa City is about equal to the average for communities in Iowa (see Figure 6).

Fig. 7. Neighborhood Vulnerability Index, Heroin Use



The overall heroin risk in Iowa City is higher than the average for communities in Iowa (see Figure 7).

Fig. 8. Neighborhood Vulnerability Index, Methamphetamine Use

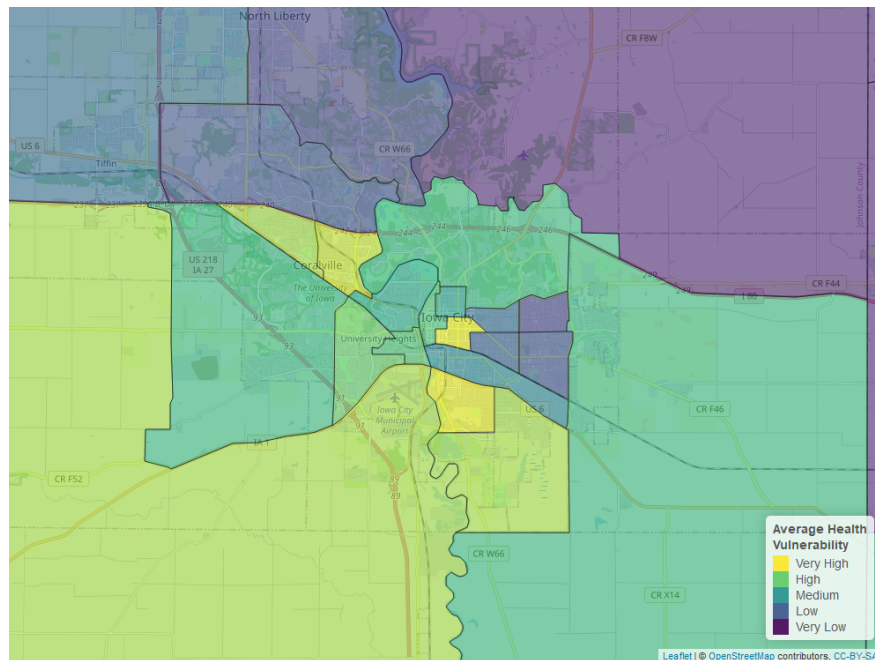


The overall meth risk in Iowa City is about equal to the average for communities in Iowa (see Figure 8).

What's Driving Health Disparities in Your Community?

In addition to the neighborhood vulnerability maps above, the Public Science Collaborative created a neighborhood map to understand health disparities in Iowa City that draws on well-established social determinants of health. By social determinants, we refer to health risks that are social in origin and tend to be unevenly distributed within a city or town. For example, in places with high average levels of education and low unemployment rates, residents tend to also have better overall health (e.g. longer life span and more healthy years of living). In places where average incomes are low and the rates of single parenting are high, people often have worse health, including higher death rates due to overdose and fewer healthy days. Knowing something about where the social determinants of health support well being and where their scarcity decreases well being can help local community organizations and governments to better target investments to reduce health disparities between neighborhoods.

Fig. 9. *Neighborhood-Level Health Disparities, Social Determinants*



According to the social determinants we considered, lack of English is the biggest risk factor for poor health and between neighborhood health disparities in Iowa City. Overall, health risks in Iowa City are about equal to the average for communities in Iowa.

APPENDIX 1: Data Used in this Report

10.1 Recovery Ready Community Index (RRCI)

Data Tool:	Recovery Ready Community Index
Data:	Data: PSC Meeting Finder Tool data; PSC Recovery Resources Locator Tool data; PSC Community Resources Tool data, U.S. Census Bureau American Community 5-year Estimates (ACS), 2015-2019

The Recovery Ready Community Index was designed to give a holistic view of a community’s “recovery readiness” and their ability to support people in recovery. The RRCI is constructed with four sub-measures: Breadth of Recovery Resources, Depth of Recovery Resources, Size of Recovery Culture, and Strength (Vibrancy) of Recovery Culture. You can read more about how the RRCI was developed on page two of this report. The specific recovery and community data collected to build the RRCI are detailed below and listed by name and source in Appendices 2, 3, and 4

10.2 PSC Meeting Finder Tool

Interactive Tool:	http://public-science.org/meetingfinder/
Data updated daily:	<i>Adult Children of Alcoholics, Al-Anon/Alateen, Alcoholics Anonymous (AA), Buddhist recovery, Celebrate Recovery, CRUSH, Crystal Meth Anonymous, Dual Recovery Anonymous, Nar-Anon, Narcotics Anonymous (NA), Pill Anonymous, Refuge Recovery, and SMART Recovery</i>

Under the hood, the PSC Meeting Finder Tool is a data pipelining system that fetches the information of the 13 different types of recovery meetings from their original sources, and integrates them into a state map (Following Figure). This system is composed of four major logical components: (1) automated robots that oversee and ‘scrape’ the peer-support websites for daily updates, (2) database infrastructure, (3) the web server infrastructure, and (4) PSC Meeting Finder web-based application. There are two types of automated program robots, called ‘bots’, utilized in this system: commander bots and scraper bots. The commander bot is in charge of running and logging the scraper bots, and reports to the system administrator when a scraper bot is unsuccessful. A scraper bot is in charge of scrapping the original listing websites, and populating the database with the cleaned data. The original listings might be unstructured and contain dirty data. It is the scraper bot’s duty to make sure that the data that is inserted into the database is clean and structured. These data are then pulled into the users’ browser by the PSC Meeting Finder Tool.

Table 1. Peer Support Meeting Information for Iowa City

Name of Meeting	Web Resource	# of locations	# of meetings per week
Al-Anon/Alateen	https://al-anon.org	22	22
Alcoholics Anonymous	https://www.aa-iowa.org/	118	52
Crystal Meth Anonymous	https://www.crystalmeth.org/	10	10
SMART Recovery	https://www.smartrecoverytest.org/	2	2

Recovery meetings data are gathered and cleaned from 13 web-based resources via our data pipeline system. Most of these resources utilize web scraping techniques (in Python by standard requests or packages such as Selenium and BeautifulSoup packages) as well as parsing PDF (Python: PyPDF2 package) files and XLS sheets (Python: csvkit). Table 1 identifies the name of the meeting, web resource, number of locations, and number of meetings per week.

Fig. 10. PSC Meeting Finder Tool - Under the Hood



10.3 PSC Resource Recovery Tool

Interactive Tool:

<http://public-science.org/recoveryresources>

Data updated yearly:

Iowa Office of Drug Control Policy; Wikipedia of Iowa hospitals; Iowa Department of Public Health; Recovery and Resilience Coordinator with AmeriCorpAllTreatment.com; TransitionalHousing.org; WomenSoberHousing.com; Addicted.org; Recovery.org; Drug-rehabs.org; Iowa Association of Rural Health Clinics; U.S. Department of Veterans Affairs

Recovery resources include access centers, drug drop off locations, hospitals, medication assisted treatment locations, mental health centers, peer support providers, recovery housing, rural clinics, SUD and problem gambling treatment locations, and Veterans Affairs health centers. To collect this data, we used a variety of public resources, including government agencies and recovery websites. Our collection of recovery resources is not necessarily exhaustive, but represents the data accessed through our initial effort and following the advice of substance use experts and researchers. This data was acquired through a variety of means, including simple downloads, manual data entry, computer reading of PDF files, and scraping websites. See the table below for the recovery resources data sources.

Table 2. *Recovery Resource Locator Tool Data Sources (Downloaded Sept 2020-May 2021)*

Resource	Data Source	Website Link
Access Centers	Manual Addition	
Drug Drop Off Locations	Iowa Office of Drug Control Policy	https://geodata.iowa.gov/datasets/rx-drop-off-locations-1?geometry=-101.674%2C40.504%2C-84.986%2C43.364
Hospitals	Wikipedia list of Iowa hospitals	https://en.wikipedia.org/wiki/List_of_hospitals_in_Iowa
Medication Assisted Treatment Locations	Iowa Department of Public Health	https://idph.iowa.gov/mat
Mental Health Centers	Iowa Department of Public Health	https://dhs.iowa.gov/sites/default/files/MHDDAccreditedProviders_32.pdf?082320201508
Recovery Housing	AllTreatment.com; TransitionalHousing.org; WomenSoberHousing.com; Addicted.org; Recovery.org; Drug-rehabs.org	AllTreatment.com;TransitionalHousing.org;WomenSoberHousing.com;Addicted.org;Recovery.org;Drug-rehabs.org
Rural Clinics	Iowa Association of Rural Health Clinics	https://iarhc.org/find-a-rural-health-clinic?view=map
SUD and Problem Gambling Treatment Locations	Iowa Department of Public Health	https://idph.iowa.gov/Portals/1/userfiles/166/Licensure/All%20Licensed%20Substance%20Use%20Disorder%20-%20Problem%20Gambling%20Program%27s%20List.pdf
Veterans Affairs Health Centers	U.S. Department of Veterans Affairs	https://www.va.gov/directory/guide/state.asp?STATE=IA&dnum=ALL

10.4 PSC Community Resource Locator Tool

Interactive Tool:

<http://public-science.org/communityresources>

Data updated yearly:

Iowa Department of Human Services; Wikipedia of Iowa colleges; Institute of Museum and Library Services, Public Libraries Survey; MyCountyParks.com; USGS Geographic Names Information System; Iowa Dept of Education; Iowa Workforce Development

Community resources include childcare providers, colleges, libraries, parks, places of worship, K-12 schools, and workforce development centers. To collect this data, we used a variety of public resources, including government agencies and recovery websites. Our collection of community resources is not necessarily exhaustive, but represents the data accessed following the advice of substance use experts and researchers. This data was acquired through a variety of means, including simple downloads, manual data entry, computer reading of PDF files, and scraping websites. See the table below for the community resources data sources.

Table 3. *Community Resource Locator Tool Data Sources (Downloaded Sept 2020-April 2021)*

Resource	Data Source	Website Link
Childcare Providers	Iowa Department of Human Services	http://ccmis.dhs.state.ia.us/ClientPortal/ProviderLocator.aspx
Colleges	Wikipedia list of Iowa colleges	https://en.wikipedia.org/wiki/List_of_colleges_and_universities_in_Iowa
Public Libraries	Institute of Museum and Library Services	https://www.ims.gov/research-evaluation/data-collection/public-libraries-survey
Parks	MyCountyParks.com	https://www.mycountyparks.com/County/Default.aspx
Places of Worship	USGS Geographic Names Information System	https://data.iowa.gov/Physical-Geography/Iowa-Church-Buildings/juvk-dad9
K-12 Schools	Iowa Department of Education	Public Schools: https://educateiowa.gov/documents/directories/2020/09/2020-21-iowa-public-school-building-directory
		Private Schools: https://educateiowa.gov/documents/directories/2020/09/2020-21-iowa-non-public-school-building-directory
Workforce Development Centers	Iowa Workforce Development	https://www.iowaworkforcedevelopment.gov/contact

10.5 Substance Use Vulnerability Index

Data Tool:

Substance Use Vulnerability Index

Data:

Treatment Episode Data Set-Admission and Discharge (TEDS), 2000-2018 National Survey on Drug Use and Health data (NSDUH), 2015-2019 U.S. Census Bureau American Community 5-year Estimates (ACS), 2015-2019

Geographic ‘hot spots’ of people at risk for substance use disorder were first predicted based on models of administrative data from Treatment Episode Data on admissions (TEDS) and the National Survey of Drug Use and Health (NSDUH) data that assessed significant relationships between key substances and socio-demographic characteristics known to affect health equity and substance use vulnerability (Tables 5-6 results below). Then, the significant predictions of risk for each substance were overlaid with Census Bureau’s American Community Survey 5-year estimates of these population characteristics to provide a visual representation of places with especially high concentrations of people with at-risk characteristics. The Census characteristics described in Table 4 below are reported in Figures 5-8

Table 4. *Substance Use Risk Index using U.S. Census Bureau American Community 5-year Estimates (2015-2019)*

Risk Characteristics	Census Table	Description
Age	B06001	Data table includes population by age categories.
Sex	B01001	Data table includes population by sex.
Poverty Status	S1701_C01	Data table includes poverty status by age bracket and for different income levels.
Marital Status	B12001	Data table includes marital status by sex.
Parental Status	B09002	Data table includes parental and childcare status.

Table 5. *Substance Use Risk Index using TEDS Admission Data*

Risk Characteristics	Alcohol	Cannabis	Meth	Cocaine	Other Opiates	Heroin	Benzos
Age	Older, >35	Young, <35, <25	Middle age	>45	<25	Spikes at both ends	<25
Sex	Male	Male	Female			Male	Female
Race	Black, Hispanic	Black	White	Non-white	Asian, white	Non-white	White
Education		No college	No college	Some college	Some college	Some college	Some college
Poverty	Public Assistance	Public Assistance		Retired/Disabled	Wages/Salary, Retired/Disabled	Wages/Salary, Retired/Disabled	
Employment	Employed	Part time	Unemployed	Employed	Unemployed		Part time
Marital Status			Separated, Divorced, Widowed	Single	Married	Single	
Pop Density	Rural, Micro	Rural, Micro	Micro	Metro	Metro	Metro	Metro, Micro

Table 6. *Substance Use Risk Index using NSDUH Data*

Risk Characteristics	Alcohol	Cannabis	Meth	Cocaine	Other Opiates	Heroin	Benzos
Age	26-34	Young, <35, <25	Middle age	18-34	<50	26-49	18-34
Sex	Male	Male	Male	Male	Male	Male	Male
Race	White	White, Native American	White, Native American	White, Native American	White, Native American	White	White
Education	College	Some college, maybe	No college		No college	No college	
Income	>75,000	<20,000	<40,000	<20,000	<40,000	<20,000	
Employment	Employed	Unemployed	Unemployed	Unemployed	Unemployed	Unemployed	Unemployed
Marital Status	Single, separated	Single	Separated, Divorced	Single	Single	Single	Single
Pop Density	Metro	Metro	Non-metro	Metro	Metro	Metro	Metro

10.6 Social Determinants of Health Index

Data: Social Determinants of Health Index

Data: *U.S. Census Bureau American Community 5-year Estimates (ACS), 2015-2019*

The Social Determinants of Health Index was developed to promote health equity through providing a better understanding of the environments that create and ameliorate the multifactorial risk factors of substance misuse on priority populations. All data for the Substance Use Vulnerability Index comes from the U.S. Census Bureau American Community Survey 5-year estimates (2015-2019). The 5-year pooled dataset represents 60 months of data that enable more precise multi-year estimates. Because many of Iowa’s counties have relatively small populations, the 5-year set of pooled data is the only type of ACS estimates that are available to use across all 99 counties. Following the standards set by *Washington State’s Social Determinants of Health Website* (www.doh.wa.gov/DataandStatisticalReports/HealthDataVisualization/SocialDeterminantsofHealthDashboards/CensusTractSocialDeterminantsofHealth), PSC collected information on the educational attainment level, health insurance coverage, English proficiency, unemployment, and poverty status in each county and then used this information to calculate the average health index for each of Iowa’s 99 counties

Table 7. *Substance Use Risk Index using U.S. Census Bureau American Community 5-year Estimates (2015-2019)*

Risk Characteristics	Census Table	Description
Educational Attainment	S1501	Data table includes educational attainment level for population 25+, by sex.
Health Insurance Coverage	S2701_C05_001	Variable is percent of civilian noninstitutionalized population that is uninsured.
English Proficiency	S1601_C06_001	Variable is percent of population 5+ that speaks English less than very well.
Unemployment, 16+	S2301_C04_001	Variable is percent of population 16+ that is in the labor force, but is unemployed.
Poverty Status	S1701_C01	Data table includes poverty status by age bracket and for different income levels.

The Social Determinants of Health Index was developed to promote health equity through providing a better understanding of the environments that create and ameliorate the multifactorial risk factors of substance misuse on priority populations. All data for the Substance Use Vulnerability Index comes from the U.S. Census Bureau American Community Survey 5-year estimates (2015-2019). The 5-year pooled dataset represents 60 months of data that enable more precise multi-year estimates. Because many of Iowa’s counties have relatively small populations, the 5-year set of pooled data is the only type of ACS estimates that are available to use across all 99 counties. Following the standards set by *Washington State’s Social Determinants of Health Website* (www.doh.wa.gov/DataandStatisticalReports/HealthDataVisualization/SocialDeterminantsofHealthDashboards/CensusTractSocialDeterminantsofHealth), PSC collected information on the educational attainment level, health insurance coverage, English proficiency, unemployment, and poverty status in each county and then used this information to calculate the average health index for each of Iowa’s 99 counties

Appendix 2: Peer Support Contacts in Your Area

Table 8. Appedix 2

Type	Name	Meetings per Week	Meeting Location
AA	511 Melrose Group	19	511 Melrose Ave, Iowa City, IA 52246, USA
AA	A A Squared-Atheist And Agnostics AA Meeting Group	1	2301 E Court St, Iowa City, IA 52245, USA
AA	Blue Noon Group	5	2301 E Court St, Iowa City, IA 52245, USA
AA	Breakfast Club Group	6	511 Melrose Ave, Iowa City, IA 52246, USA
AA	Broad Highway Group	1	214 E Jefferson St, Iowa City, IA 52245, USA
AA	By The Book Group	1	320 E College St, Iowa City, IA 52240, USA
AA	Flimsy Reed Group	1	511 Melrose Ave, Iowa City, IA 52246, USA
AA	Friday Night Mens Group	1	310 N Johnson St, Iowa City, IA 52245, USA
AA	Hospital GroupBoyd Tower 5th floor rm 5024	1	2301 E Court St, Iowa City, IA 52245, USA
AA	Iowa City LGBTQ Group	1	123 E Market St, Iowa City, IA 52245, USA
AA	Iowa City Young People's Group	1	140 Gathering Place, Iowa City, IA 52246, USA
AA	Legacy Group	1	511 Melrose Ave, Iowa City, IA 52246, USA
AA	Living Room Groups	1	123 E Market St, Iowa City, IA 52245, USA
AA	Midwest Group	1	310 N Johnson St, Iowa City, IA 52245, USA
AA	Misfits Group	7	1927 Keokuk St, Iowa City, IA 52240, USA
AA	Morman Trek Group	1	2301 E Court St, Iowa City, IA 52245, USA
AA	Saturday Morning Womens Big Book Group	1	123 E Market St, Iowa City, IA 52245, USA
AA	Saturday Noon Group	1	North Hall, Iowa City, IA 52245, USA
AA	Step out into the Sun Meditation	1	2414 Towncrest Dr, Iowa City, IA 52240, USA
AA	Sunlight Of The Spirit Group	1	2301 E Court St, Iowa City, IA 52245, USA
AA	Surrender Club Mens Step Meeting	1	310 N 1st Ave, Iowa City, IA 52245, USA
AA	Together We Can Make It Group	1	511 Melrose Ave, Iowa City, IA 52246, USA
AA	Treatment Center Meeting	1	2301 E Court St, Iowa City, IA 52245, USA
AA	Treatment Center Meeting	1	430 Southgate Ave, Iowa City, IA 52240, USA
AA	Tuesday Night Trudgers Group	1	310 N Johnson St, Iowa City, IA 52245, USA
AA	Womens Step Group	1	310 N Johnson St, Iowa City, IA 52245, USA
	Saturday Serenity Meeting	1	4643 American Legion Rd, Iowa City, IA 52240, USA
	We Do Recover	2	3001 Muscatine Ave, Iowa City, IA 52240, USA
	We Do Recover	2	511 Melrose Ave, Iowa City, IA 52246, USA
	Women's Meeting	1	1609 Deforest Ave, Iowa City, IA 52240, USA
AlAnon	Just For Today AFG	1	320 E College St, Iowa City, IA 52240, USA
AlAnon	Monday Noon AFG	1	320 E College St, Iowa City, IA 52240, USA
AlAnon	Saturday Noon Women's AFG	1	320 E College St, Iowa City, IA 52240, USA
AlAnon	Sunday Night AFG Adult Children	1	320 E College St, Iowa City, IA 52240, USA
AlAnon	Sunday Night AFG Book Study	1	310 N Johnson St, Iowa City, IA 52245, USA
AlAnon	Sunday Night Alateen	1	310 N Johnson St, Iowa City, IA 52245, USA
AlAnon	Thursday Night AFG	1	2301 E Court St, Iowa City, IA 52245, USA
AlAnon	Thursday Noon AFG	1	320 E College St, Iowa City, IA 52240, USA

AlAnon	Tuesday Noon Meeting AFG	1	310 N Johnson St, Iowa City, IA 52245, USA
AlAnon	Tuesday Tuneup AFG	1	2301 E Court St, Iowa City, IA 52245, USA
AlAnon	Weekend Winners AFG	1	2 E Jefferson St, Iowa City, IA 52240, USA
SMART	UIHC 5 Boyd Tower	1	200 Hawkins Dr, Iowa City, IA 52242, USA

Appendix 3: Recovery Resources in Your Area

Table 9. Iowa City Recovery Resource Type, Name of Business, and Address of Business

Resource	Name	Address
Access Center	GuideLink Center	300 Southgate Ave., Iowa City, IA 52240
Drug Drop Off Location	Hartig Drug	701 Morman Trek Blvd, Iowa City, Iowa 52246
Drug Drop Off Location	Hy-Vee Drugstore Pharmacy	310 North 1st Ave, Iowa City, Iowa 52245
Drug Drop Off Location	Hy-Vee Pharmacy	632 S. Oak River Hills, Iowa City, Iowa 50126
Drug Drop Off Location	Hy-Vee Pharmacy #1 (1281)	1720 Waterfront Drive, Iowa City, Iowa 52240
Drug Drop Off Location	Hy-Vee Pharmacy #2 (1285)	812 South 1st Avenue, Iowa City, Iowa 52245
Drug Drop Off Location	Hy-Vee Pharmacy #3 (1288)	1125 N Dodge Street, Iowa City, Iowa 52245
Drug Drop Off Location	Iowa City Police Department	410 East Washington Street, Iowa City, Iowa 52240
Drug Drop Off Location	Johnson County Sheriff's Office	511 South Capitol Street, Iowa City, Iowa 52241
Drug Drop Off Location	University Heights Police Department	1004 Melrose Ave, Iowa City, Iowa 52246
Drug Drop Off Location	University of Iowa Hospital	CC106 General Hospital, Iowa City, Iowa 52242
Drug Drop Off Location	Walgreens	2214 Muscatine Ave, Iowa City, Iowa 52240
Hospital	Mercy Iowa City	500 E Market St, Iowa City, IA 52245
Hospital	University of Iowa Hospitals and Clinics	200 Hawkins Dr, Iowa City, IA 52242
Medication Assisted Treatment	University of Iowa Hospitals and Clinics - Dr. Carissa Bauer M.D.	200 Hawkins Drive, Iowa City, IA 52246
Medication Assisted Treatment	University of Iowa Hospitals and Clinics - Dr. Vicki Kijewski M.D.	200 Hawkins Drive, Iowa City, IA 52242
Medication Assisted Treatment	University of Iowa Hospitals and Clinics - Dr. Alison Lynch M.D.	200 Hawkins Drive, Iowa City, IA 52242
Medication Assisted Treatment	University of Iowa Hospitals and Clinics - Dr. Joshua Radke M.D.	200 Hawkins Drive, Iowa City, IA 52242
Medication Assisted Treatment	University of Iowa Hospitals and Clinics - Dr. Andrea Weber M.D.	200 Hawkins Drive, Iowa City, IA 52242
Medication Assisted Treatment	VA Iowa City - Dr. Anthony Miller M.D.	601 Highway 6 West, Iowa City, IA 52246

Medication Assisted Treatment	University of Iowa Hospitals and Clinics - Dr. Christopher Buresh MD	200 Hawkins Drive, Iowa City, IA 52242
Medication Assisted Treatment	Department of Emergency Medicine RCP 1008 - Dr. Hans House MD	200 Hawkins Drive, Iowa City, IA 52240
Medication Assisted Treatment	Univ. of Iowa Carver College of Medicine, Dept. of Psychiatry - Dr. Nicholas Trapp MD	200 Hawkins Drive, Iowa City, IA 52242
Medication Assisted Treatment	University of Iowa Hospitals and Clinics - Dr. Brian Cook M.D.	Department of Psychiatry, Iowa City, IA 52242
Medication Assisted Treatment	Mercy Iowa City - Dr. Robert Wesner M.D.	103 East College Street, Iowa City, IA 52240
Medication Assisted Treatment	Rein Center - Dr. Laurie McCormick MD	421 E. Market Street, Iowa City, IA 52245
Medication Assisted Treatment	Debra Poole NP	430 Southgate Avenue, Iowa City, IA 52240
Medication Assisted Treatment	Lauren Hughes NP	1039 Arthur Street, Iowa City, IA 52240
Medication Assisted Treatment	Psychiatric Associates - Dr. Richard Hauser M.D.	673 Westbury Drive, Iowa City, IA 52245
Mental Health Center	Builders of Hope Global Village, Inc.	1700 South 1st Ave., Iowa City, IA
Mental Health Center	Caring Hands and More	409 Kirkwood Ave., IA. City, IA
Mental Health Center	Chatham Oaks	4515 Melrose Avenue, Iowa City, IA
Mental Health Center	Community Crisis Services and Food Bank	1121 S. Gilbert Ct., Iowa City, IA
Mental Health Center	Goodwill Industries of the Heartland	1410 South First Avenue, Iowa City, IA
Mental Health Center	Johnson County MHDD	855 S. Dubuque Street, Iowa City, IA
Mental Health Center	Mid-Eastern Council on Chemical Abuse/ Prelude Behavioral Services	430 Southgate Avenue, Iowa City, IA
Mental Health Center	Reach for Your Potential, Inc.	1705 S 1st Avenue, Suite 1, Iowa City, IA
Mental Health Center	Shelter House	429 Southgate Ave., IA. City, IA
Mental Health Center	Successful Living	2406 Towncrest Drive, Iowa City, IA
Mental Health Center	Symmetry Health Systems	2104 Palmer Cr., Iowa City, IA
Mental Health Center	Systems Unlimited, Inc.	2533 S. Scott Blvd., Iowa City, IA
Mental Health Center	University of Iowa Hospitals and clinics	200 Hawkins Dr., Iowa City, IA
Mental Health Center	Unlimited Abilities	453 Hwy 1 West, Iowa City, IA
Peer Support Provider	Abbe Community Mental Health - Integrated Health Home	1039 Arthur Street, Iowa City, IA
Peer Support Provider	Abbe Community Mental Health - Together Not Alone	1039 Arthur Street, Iowa City, IA
Peer Support Provider	CommUnity Crisis Services and Food Bank - Mobile Crisis Outreach	1121 South Gilbert Court, Iowa City, IA
Peer Support Provider	GuideLink Center - Access Center	300 Southgate Avenue, Iowa City, IA
Peer Support Provider	NAMI of Johnson County - R Place Peer Recovery Center	702 S Gilbert Street, Suite 111, Iowa City, IA
Peer Support Provider	Veterans Administration - Local Recovery Coordinator	520 10th Ave, Office B10, Iowa City, IA

Recovery Coaching	Iowa Peer and Family Peer Support Training Program	Uihc 240 Cdd 100 Hawkins Drive, Iowa City, IA
Recovery Coaching	Prelude Behavioral Services	430 Southgate Avenue, Iowa City, IA
Recovery Housing	Prelude Behavioral Services	430 Southgate Ave, Iowa City, IA
Recovery Housing	Shelter House	429 Southgate Ave., Iowa City, IA
SUD and Problem Gambling Treatment Location	University of Iowa Hospitals and Clinics Chemical Dependency Services	200 Hawkins Drive Iowa City, 52242-1009
VA Health Center	Iowa City VA Health Care System	601 Highway 6 West, Iowa City, IA 52246-2208

Appendix 4: Community Resources in Your Area

Table 10. Iowa City Community Resource Type, Name of Business, and Address of Business

Resource	Name	Address
Childcare Provider	4C's Home Ties Child Care Center	405 Myrtle Ave, Iowa City, IA 52246
Childcare Provider	ABC Childcare Inc	1 Amber Ln, Iowa City, IA 52240
Childcare Provider	Emily Jones	2548 Clearwater Ct, Iowa City, IA 52246
Childcare Provider	Emma Eldeen	1018 Ronalds St, Iowa City, IA 52245
Childcare Provider	Fatma Ali	2608 Bartelt Rd Apt #1d, Iowa City, IA 52240
Childcare Provider	Good Shepherd Center	603 Greenwood Dr, Iowa City, IA 52246
Childcare Provider	HACAP Head Start-Faith UCC	1609 Deforest Ave, Iowa City, IA 52240
Childcare Provider	HACAP Head Start-Iowa City Bloomington	318 E Bloomington St, Iowa City, IA 52245
Childcare Provider	HACAP Head Start-Waterfront	367 Southgate Ave, Iowa City, IA 52240
Childcare Provider	Nathalie Agbekponou	1928 Hannah Jo Ct, Iowa City, IA 52240
Childcare Provider	NCJC-Alexander BASP	3571 Sycamore St, Iowa City, IA 52240
Childcare Provider	NCJC-Broadway Site	2105 Broadway St, Iowa City, IA 52240
Childcare Provider	NCJC-Grant Wood	1930 Lakeside Dr, Iowa City, IA 52240
Childcare Provider	NCJC-Mark Twain BASP	1355 Deforest Ave, Iowa City, IA 52240
Childcare Provider	NCJC-Pheasant Ridge	2651 Roberts Rd, Iowa City, IA 52240
Childcare Provider	Necie's Nest	711 Sandusky Dr, Iowa City, IA 52240
Childcare Provider	Our Redeemer Preschool	2301 E Court St, Iowa City, IA 52245
Childcare Provider	Parkview Christian Preschool	15 Foster Rd, Iowa City, IA 52245
Childcare Provider	Patricia Walker	1424 Broadway St, Iowa City, IA 52240
Childcare Provider	Rania Mohamed	2515 Bartlet Rd Apt 2c, Iowa City, IA 52246
Childcare Provider	Adina Levitt	635 S Governor St, Iowa City, IA 52240
Childcare Provider	Alice's Rainbow Child Care Center	421 Melrose Ave, Iowa City, IA 52246
Childcare Provider	Allison Crawford	1428 Santa Fe Dr, Iowa City, IA 52246
Childcare Provider	Alyce Winters	2160 Taylor Dr, Iowa City, IA 52240
Childcare Provider	Angela Pagan	2344 Lakeside Dr, Iowa City, IA 52240
Childcare Provider	Anita Schuckert	3022 Radcliffe Ave, Iowa City, IA 52245
Childcare Provider	Anteanna Henderson	1118 S 1st Ave, Iowa City, IA 52240
Childcare Provider	April Cardenas	1319 Sundown Ridge, Iowa City, IA 52246
Childcare Provider	Helen Richardson	2509 Clearwater Ct, Iowa City, IA 52246
Childcare Provider	Horn Extended Day Program	600 Koser Ave, Iowa City, IA 52246
Childcare Provider	Hundred Acre Woods	263 Scott Ct, Iowa City, IA 52245
Childcare Provider	Ikhlas Elshakh	2652 Roberts Rd Apt 1b, Iowa City, IA 52246
Childcare Provider	Iowa Hugs and Kisses Daycare	1605 Dickenson Ln, Iowa City, IA 52240
Childcare Provider	Janet White	980 Robin Rd, Iowa City, IA 52246
Childcare Provider	Regina AM-PM Program	2120 Rochester Ave, Iowa City, IA 52245
Childcare Provider	Regina Early Childhood Center	2140 Rochester Ave, Iowa City, IA 52245
Childcare Provider	Roda Abkar	2411 Bartlett Rd Apt 1a, Iowa City, IA 52246
Childcare Provider	Shalom Christian Preschool and Day Care	1715 Mormon Trek Blvd, Iowa City, IA 52246
Childcare Provider	Shanell Fouch	1248 Esther Ct, Iowa City, IA 52240
Childcare Provider	Shatoya Anderson	1202 Kirkwood Ave, Iowa City, IA 52240
Childcare Provider	Beatrice Nema	60 Regal Ln, Iowa City, IA 52240
Childcare Provider	Bill Reagan Children's Center	2620 Muscatine Ave, Iowa City, IA 52240

Childcare Provider	Bridget Abalos	1414 Hollywood Blvd, Iowa City, IA 52240
Childcare Provider	Cadence Academy Preschool - Iowa City	325 S Dubuque St, Iowa City, IA 52240
Childcare Provider	Julie Jensen	6 Arbor Cir, Iowa City, IA 52245
Childcare Provider	Karen Smiley	2022 Union Rd, Iowa City, IA 52240
Childcare Provider	KCE Champions LLC @ Hoover Elementary	1355 Barringotn Road, Iowa City, IA 52240
Childcare Provider	KCE Champions LLC @ Lucas Elementary	830 Southlawn Drive, Iowa City, IA 52245
Childcare Provider	Kesha Gibson	1896 N Dubuque Rd, Iowa City, IA 52245
Childcare Provider	Kiddie Konnection Inc	2707 Muscatine Ave, Iowa City, IA 52240
Childcare Provider	Shimek BASP	1400 Grissel Pl, Iowa City, IA 52245
Childcare Provider	Shirley Harris	2103 Keokuk St Unit 10, Iowa City, IA 52240
Childcare Provider	Sonia Henderson	2031 Western Rd, Iowa City, IA 52240
Childcare Provider	Stacey Marshall	205 Myrtle Ave Apt 3, Iowa City, IA 52246
Childcare Provider	Stephanie Carter	1814 Hollywood Ct, Iowa City, IA 52240
Childcare Provider	Stepping Stones Preschool	3001 Muscatine Ave, Iowa City, IA 52240
Childcare Provider	Suha Saad	2540 Bartelt Rd #1c, Iowa City, IA 52246
Childcare Provider	Carrie Hickman	1313 Sandusky Dr, Iowa City, IA 52240
Childcare Provider	Charles Evans	2517 Whispering Prairie Ave, Iowa City, IA 52240
Childcare Provider	Christ The King Christian Preschool	325 Mormon Trek Blvd, Iowa City, IA 52246
Childcare Provider	Kids Care of Iowa City	2675 E Washington St, Iowa City, IA 52245
Childcare Provider	Kids Depot Of Iowa City	502 Reno St, Iowa City, IA 52245
Childcare Provider	KinderFarm Preschool	5048b Highway 6 SE, Iowa City, IA 52240
Childcare Provider	Kirkwood School For Children Co.	1107 Kirkwood Ct, Iowa City, IA 52240
Childcare Provider	Kristen Udell	2341 Cae Dr, Iowa City, IA 52246
Childcare Provider	Kristine Duncan	1209 Arthur St, Iowa City, IA 52240
Childcare Provider	La Petite Academy	1504 Mall Dr, Iowa City, IA 52240
Childcare Provider	Learning Begins at Home Day-care	2537 Clearwater Ct, Iowa City, IA 52246
Childcare Provider	Lemme BASP	3100 E Washington St, Iowa City, IA 52245
Childcare Provider	Lincoln Before and After School Program	300 Teeters Ct, Iowa City, IA 52246
Childcare Provider	Lionheart Early Learning Center - Iowa City	2717 Northgate Dr, Iowa City, IA 52245
Childcare Provider	Tami Posivio	4 Summary St, Iowa City, IA 52240
Childcare Provider	Thelma Jackson and Ashley Jackson	1944 Grantwood St, Iowa Cty, IA 52240
Childcare Provider	Tiasha Daniels	3558 Shamrock Pl, Iowa City, IA 52245
Childcare Provider	UIHC Child Care and Early Education Center	109 Westlawn S Bldg Newton, Iowa City, IA 52242
Childcare Provider	Cynthia Rivera	523 Mineral Point Ln, Iowa City, IA 52246
Childcare Provider	Mary Jo Small Child Care Center at Brookland Woods	309 Melrose Ave, Iowa City, IA 52246
Childcare Provider	Masoka Kilima	624 Beachview Dr, Iowa City, IA 52246
Childcare Provider	Melissa Deonovic	1141 Hampton Ct, Iowa City, IA 52240
Childcare Provider	Melrose Daycare/Preschool	701 Melrose Ave, Iowa City, IA 52246
Childcare Provider	Michelle Wilkinson	40 Larkspur Ct, Iowa City, IA 52246
Childcare Provider	Mirtha Castillo	2100 S Scott Blvd Unit 93, Iowa City, IA 52240
Childcare Provider	Morris Early Childhood Center	2916 Northgate Dr, Iowa City, IA 52245
Childcare Provider	Muniera Mursal	2532 Bartelt Rd Apt 2d, Iowa City, IA 52246
Childcare Provider	Little Angels Learning Center	214 E Jefferson St, Iowa City, IA 52245

Childcare Provider	Little Creations Academy Inc	2929 E Court St, Iowa City, IA 52245
Childcare Provider	Longfellow Key BASP	1130 Seymour Ave, Iowa City, IA 52240
Childcare Provider	Loving Arms Early Learning Center	2675 E Washington St, Iowa City, IA 52245
Childcare Provider	Lucie Mordecai	1914 Jeffrey St, Iowa City, IA 52246
Childcare Provider	Lydie Tehombana	1658 Burns Ave, Iowa City, IA 52240
Childcare Provider	Mann Before and After School Program	521 N Dodge St, Iowa City, IA 52245
Childcare Provider	Marlene Waikel	4 Wildberry Ln NE, Iowa City, IA 52240
Childcare Provider	Victoria Evans	1208 Baker St, Iowa City, IA 52240
Childcare Provider	Walaa Ali	2534 Bartelt Rd #1a, Iowa City, IA 52246
Childcare Provider	Weber Before and After School Program	3850 Rohret Rd, Iowa City, IA 52246
Childcare Provider	Willowwind School	950 Dover St, Iowa City, IA 52245
College	University of Iowa	University of Iowa, Iowa City, IA
Family Support Specialists	NAMI of Johnson County	702 S Gilbert Street, Suite 111, Iowa City, IA
Library	Iowa City Public Library	123 S Linn St, Iowa City, IA 52240
Library	Icpl Bookmobile	123 S Linn St, Iowa City, IA 52240
Park	Scott Church Park	5409 American Legion Rd, Iowa City, IA 52240
Place of Worship	United Church of Christ	30 N Clinton St, Iowa City, IA 52245
Place of Worship	Saint Wenceslaus Catholic Church	618 E Davenport St, Iowa City, IA 52245
Place of Worship	Faith Baptist Church	1251 Village Rd, Iowa City, IA 52240
Place of Worship	Parkview Evangelical Free Church	15 Foster Rd, Iowa City, IA 52245
Place of Worship	Agudas Achim Congregation	E Washington St, Iowa City, IA 52240
Place of Worship	First Baptist Church	1251 Village Rd, Iowa City, IA 52240
Place of Worship	Assembly of God Church	1330 Keokuk St, Iowa City, IA 52240
Place of Worship	Victory Temple Church	950 Dover St, Iowa City, IA 52245
Place of Worship	Saint Paul Lutheran Chapel	404 E Jefferson St, Iowa City, IA 52245
Place of Worship	Gloria Dei Lutheran Church	123 E Market St, Iowa City, IA 52245
Place of Worship	Foursquare Gospel Church	2120 H St, Iowa City, IA 52240
Place of Worship	Saint Marks United Methodist Church	2675 E Washington St, Iowa City, IA 52245
Place of Worship	Living Word Christian Fellowship	Iowa City, IA 52245
Place of Worship	B'Nai B'Rith Hillel Foundation	Market-Dubuque Building, 122 E Market St, Iowa City, IA 52245
Place of Worship	Newman Catholic Student Center	104 E Jefferson St, Iowa City, IA 52245
Place of Worship	Bethel African Methodist Episcopal Church	411 S Governor St, Iowa City, IA 52240
Place of Worship	First Presbyterian Church	2701 Rochester Ave, Iowa City, IA 52245
Place of Worship	Salvation Army Church	1116 S Gilbert Ct, Iowa City, IA 52240
Place of Worship	Faith United Church of Christ	1609 Deforest Ave, Iowa City, IA 52240
Place of Worship	Hope United Methodist Church	214 E Jefferson St, Iowa City, IA 52245
Place of Worship	Kirkwood Avenue Church of Christ	1320 Kirkwood Ave, Iowa City, IA 52240
Place of Worship	Old Brick Church	26 E Market St, Iowa City, IA 52245
Place of Worship	Geneva Campus Ministry	500 N Clinton St, Iowa City, IA 52245
Place of Worship	Zion Lutheran Church	310 N Johnson St, Iowa City, IA 52245
Place of Worship	Church of the Nazarene	1035 Wade St, Iowa City, IA 52240
Place of Worship	Lutheran Campus Ministry	123 E Market St, Iowa City, IA 52245
Place of Worship	First Assembly of God Church	1330 Keokuk St, Iowa City, IA 52240

Place of Worship	Orthodox Christians of Iowa City	722 E College St, Iowa City, IA 52240
Place of Worship	Friends Meeting	311 N Linn St, Iowa City, IA 52245
Place of Worship	Our Redeemer Lutheran Church	2301 E Court St, Iowa City, IA 52245
Place of Worship	Episcopal University Chaplaincy	Iowa City, IA 52245
Place of Worship	First United Methodist Church	214 E Jefferson St, Iowa City, IA 52245
Place of Worship	Light and Life Church	Iowa City, IA 52240
Place of Worship	Trinity Episcopal Church	320 E College St, Iowa City, IA 52240
Place of Worship	Danforth Chapel	125 N Madison St, Iowa City, IA 52245
Place of Worship	Congregational United Church	30 N Clinton St, Iowa City, IA 52245
Place of Worship	Southeastern Iowa Synod Evangelical Lutheran Church	Iowa City, IA 52245
Place of Worship	Baptized Believers in Christ Church	2020 G St, Iowa City, IA 52240
Place of Worship	First Christian Church	900 Lincolnshire Pl, Coralville, IA 52241
Place of Worship	Saint Wenceslaus Church	618 E Davenport St, Iowa City, IA 52245
Place of Worship	Saint Marys Church	228 E Jefferson St, Iowa City, IA 52245
School (K-12)	Iowa City High School	1900 Morningside Dr, Iowa City, IA 52245
School (K-12)	West Senior High School	2901 Melrose Ave, Iowa City, IA 52246
School (K-12)	Elizabeth Tate Alt. High School	1528 Mall Drive, Iowa City, IA 52240
School (K-12)	Southeast Junior High School	2501 Bradford Dr, Iowa City, IA 52240
School (K-12)	Ernest Horn Elementary School	600 Koser Ave, Iowa City, IA 52246
School (K-12)	Helen Lemme Elementary School	3100 Washington St, Iowa City, IA 52245
School (K-12)	Lincoln Elementary School	300 Teeters Court, Iowa City, IA 52246
School (K-12)	Longfellow Elementary School	1130 Seymour Ave, Iowa City, IA 52240
School (K-12)	Robert Lucas Elementary School	830 Southlawn Dr, Iowa City, IA 52245
School (K-12)	Alexander Elementary	3571 Sycamore St. , Iowa City, IA 52240
School (K-12)	Horace Mann Elementary School	521 N Dodge St, Iowa City, IA 52245
School (K-12)	Herbert Hoover Elementary School	1355 Barrington Rd, Iowa City, IA 52240
School (K-12)	Bohumil Shimek Elementary School	1400 Grissel Place, Iowa City, IA 52245
School (K-12)	Mark Twain Elementary	1355 Deforest Avenue, Iowa City, IA 52240
School (K-12)	Grant Wood Elementary School	1930 Lakeside Dr, Iowa City, IA 52240
School (K-12)	Weber Elementary	3850 Rohret Road, Iowa City, IA 52246
School (K-12)	Willowwind School	950 Dover, Iowa City, IA 52245
School (K-12)	Faith Academy	1030 Cross Park Ave, Iowa City, IA 52240
School (K-12)	Regina Jr Sr High School	2150 Rochester Ave, Iowa City, IA 52245
School (K-12)	Regina Elementary School	2120 Rochester Ave, Iowa City, IA 52245
Workforce Development Center	Iowa City IowaWORKS Office	1700 S 1st Avenue, Suite 11b,iowa City,ia,52240