



Recovery Iowa - Dubuque 360

August, 2022



Report provided to the Iowa Department of Public Health

This project was supported by the Iowa Department of Public Health, Bureau of Substance Abuse (IDPH) via a sub-ward from the Substance Abuse and Mental Health Services (SAMHSA) of the U.S. Department of Health and Human Services (HHS) as part of a financial assistance award totaling 350,000 with 100 percent funded by SAMHSA/HHS. The contents are those of the author(s) and do not necessarily represent the official views of, nor an endorsement by, IDPH, SMHSA/HHS, or the U.S. Government



Contents

1 Overview	3
2 What is Recovery?	3
3 What is a Recovery Community Center?	3
4 Is Your Community Recovery Ready?	4
5 What Peer Support Meetings are Available in Your Area?	5
6 What Recovery Resources Are Available in Your Area?	6
7 What Community Resources Are Available in Your Area?	7
8 Which Neighborhoods in Your Community Need Additional Health Resources and Support?	8
9 What's Driving Health Disparities in Your Community?	11
10 APPENDIX 1: Data Used in this Report	12
10.1 Recovery Ready Community Index (RRCI)	12
10.2 PSC Meeting Finder Tool	12
10.3 PSC Resource Recovery Tool	14
10.4 PSC Community Resource Locator Tool	15
10.5 Substance Use Vulnerability Index	16
10.6 Social Determinants of Health Index	18
11 Appendix 2: Peer Support Contacts in Your Area	19
12 Appendix 3: Recovery Resources in Your Area	20
13 Appendix 4: Community Resources in Your Area	22

Overview

At the request of the Iowa Department of Public Health, Bureau of Substance Abuse, the Public Science Collaborative (PSC) developed community-specific reports to support recovery efforts in Iowa. Recognizing the need to strengthen substance use recovery efforts throughout the state, we identified a large number of existing recovery-oriented resources in Dubuque, which we describe and map in the pages that follow. We developed additional maps to identify at-risk neighborhoods that will benefit from targeted health interventions and additional community resources. For additional questions or information about this report, the data tools described, or the Public Science Collaborative, please reach out to the principal investigators of this study, Dr. Shawn Dorius at sdorius@iastate.edu, or Dr. Cassandra Dorius at cdorius@iastate.edu.

What is Recovery?

Though substance use recovery is an evolving concept that has been defined in a number of ways over the years, an emerging consensus is that recovery is a voluntary path toward improved personal well-being coupled with a diminished risk of substance use relapse. As noted by Bill White (2007):

Recovery is the experience through which individuals, families, and communities impacted by severe alcohol and other drug (AOD) problems utilize internal and external resources to voluntarily resolve these problems, heal the wounds inflicted by AOD related problems, actively manage their continued vulnerability to such problems, and develop a healthy, productive, and meaningful life.

In White's view, resources help individuals, families, and communities in two ways. First, they help address alcohol and other drug-related problems (for example, addiction, unemployment, housing instability, family separation), and second, they support health, productivity, and meaning in post-treatment life. The appeal of this view is that it is explicit and direct in its recognition that recovery involves not only internal resources such as mental, emotional, and genetic factors but also external ones. In thinking about where to focus federal and state resources to develop a network of community-based recovery centers in Iowa, the key question is, "What kinds of external resources matter most for sustained SUD recovery?"

If we knew which resources were most helpful to long-run recovery, we could target towns and cities with large stocks of 'recovery resources' to grow Recovery Community Centers

What is a Recovery Community Center?

Recovery Community Centers (RCCs) represent low-cost, member-driven, voluntarist, locally managed, and community-engaged pathways to sustainable recovery for people with substance use disorder, or SUD. RCCs accomplish these goals by linking people to existing resources and infrastructure and promoting a vibrant recovery culture based in a **physical community center where people in recovery can visit, engage with others in recovery, and access resources**. RCCs are an innovative, safe, and helpful source of community recovery support that provides linkages to existing local services and resources that support recovery for people with a substance use or mental health disorder. RCCs support recovery by helping people in the community who have a history of substance use to develop recovery capital, the personal resources that enable people to live healthy, productive, and community engaged lives. RCCs do this by connecting members of the recovery community, called peers, with different types of services such as recovery coaching, medication assisted treatment, connection to employment services and child care, recovery-oriented housing, or education and workforce development training services. Located in the heart of the community, Recovery Community Centers improve the ability of the local recovery community to care for one another, and they also help destigmatize the lives of people in recovery.

The RCC model of recovery is validated by academic studies and is promoted by both the SUD community and public health officials. However, finding the right communities for RCC development in Iowa has proven difficult, underscoring the fact that Iowa is one of just a few states in the U.S. that has yet to adopt the recovery community model.

Is Your Community Recovery Ready?

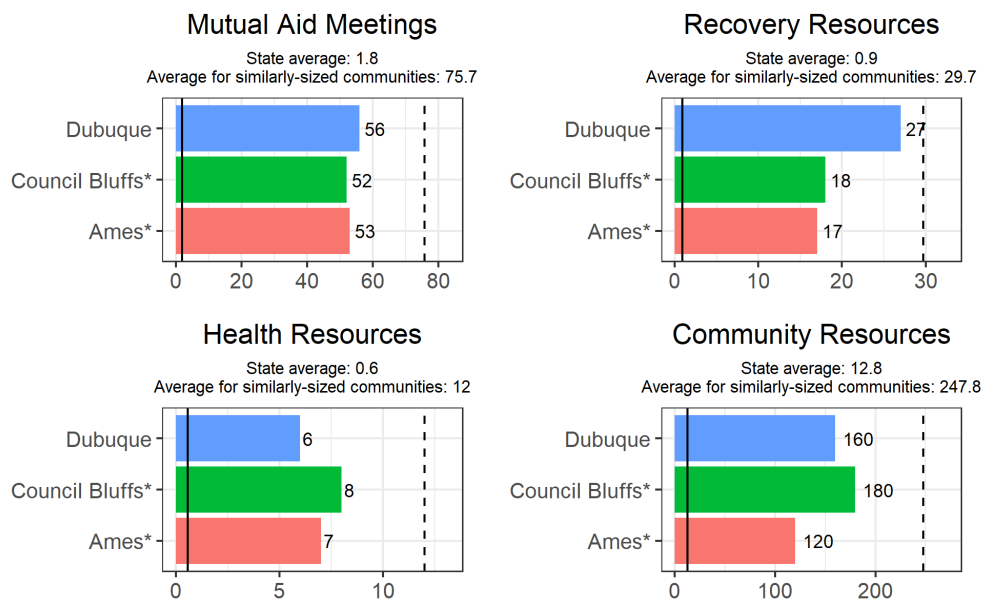
What is the RRCI and how was it created? We consulted scientific literature on substance use recovery and engaged key stakeholders who work directly with people in recovery around the country and in Iowa. This helped us to identify 17 unique community-based resources that we collected for almost all of Iowa’s 944 cities and towns. In total, we found nearly 16,000 community features that support recovery. We mapped and analyzed these resources so we could identify a short list of ‘Recovery Ready’ communities across the state, culminating in the first-of-its-kind index: **The Recovery Ready Community Index (RRCI)**.

The RRCI encompasses four dimensions: breadth, depth, size, and strength. Breadth of recovery resources was measured by counting the number of different types of recovery resources in each county and community. For example, counting if there is at least one hospital, one treatment center, and one drug drop off location in town. Depth of recovery resources was measured by first counting the total number of resources in each category and then ranking cities accordingly. This gives added importance to places that have, for example, more than one medication assisted treatment provider and many different recovery houses in town. Size of local recovery culture was measured by the total number of weekly mutual aid and peer support meetings per week in each city (e.g. total number of NA and AA meetings). Finally, the strength of the recovery community was measured as the difference between the total number of weekly peer support meetings and the number of meetings expected, based upon the total population of each town. These four dimensions were used to create the Recovery Ready Community Index. The RRCI is the simple average of each town’s ranking across the four dimensions or recovery readiness. Places that ranked high on all four dimensions are labeled as especially recovery ready.

How recovery ready is your community? Are you well-positioned to support a Recovery Community Center in your community? Relative to all cities, Dubuque ranks low in terms of its recovery readiness. **According to the Recovery Ready Community Index (RRCI), Dubuque scored 30.0, placing it at 8th when compared with other Iowa cities** (Iowa’s RRCI state average is 32.7).

Another way to understand recovery resources in Dubuque is to compare them with those of the state average and other communities of similar size. This comparison is displayed in Figure 1, which compares Dubuque with Council Bluffs and Ames. An average across all Iowa towns as well as the subset having a comparable population level are also included as a baseline for comparison.

Fig. 1. Recovery Ready Community Index: Comparison of Dubuque to Other Iowa Communities on ‘Recovery Readiness’



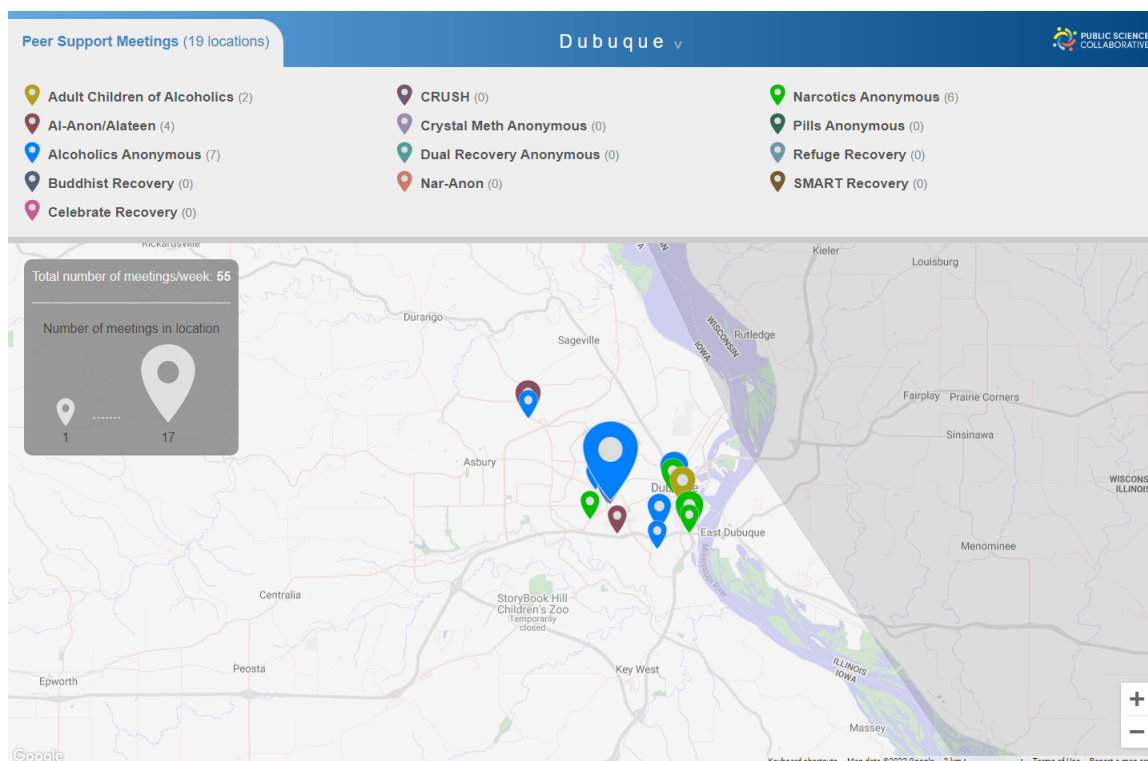
* The Iowa cities most comparable to Dubuque by population are Council Bluffs and Ames.

** The solid vertical line represents the average for all 944 communities in Iowa and the dashed vertical line represents the average for Iowa communities with populations of more than 50,000 people.

What Peer Support Meetings are Available in Your Area?

Recovery meetings, such as Alcoholics and Narcotics Anonymous, play a significant role in facilitating the recovery process. Despite the importance of these meetings there is no coherent ‘one stop shop’ to find the meeting you need, when you need it. People usually need to go through several steps, such as searching for meetings on Google, or looking for a specific meeting time or place on a local listings’ website. It can be hard enough to connect with peer support during the best of times, but doubly difficult when you are in crisis and questioning your recovery. Magnifying the challenge of finding the right meeting at the right time is being new to a community, unfamiliar with the members of a local meeting, and being in a moment of duress.

Fig. 2. Peer Support Meetings in Dubuque



Note: Larger markers indicate the locations that host more than one meeting per week. For example, in Dubuque there are 57 total meetings hosted each week in the locations identified above.

We developed the PSC Meeting Finder tool above to make it easier to find local meetings. We do this by presenting a map-based list of meetings all throughout Iowa and we update the map every single day. It’s a simple interface that helps people to find the appropriate meetings nearby, right now. Users can filter meetings by time of day, day of week, or whether childcare is available, for example, to find the right meeting at the right time. Having a responsive design, PSC Meeting Finder Tool runs efficiently and quickly on many different kinds of computers and mobile devices such as smartphones. Figure 2 is a screen capture of the PSC Meeting Finder where you can see the location of all known peer support meetings in your community. A web version of this map is available at: <http://public-science.org/reportmaps/meetings/?city=Dubuque>. Note that the peer support data is updated regularly and may not exactly match Figure 2. A full listing of these resources is provided as a table with meeting, type, group name, number of meetings per week, and location of meetings in Appendix 2.

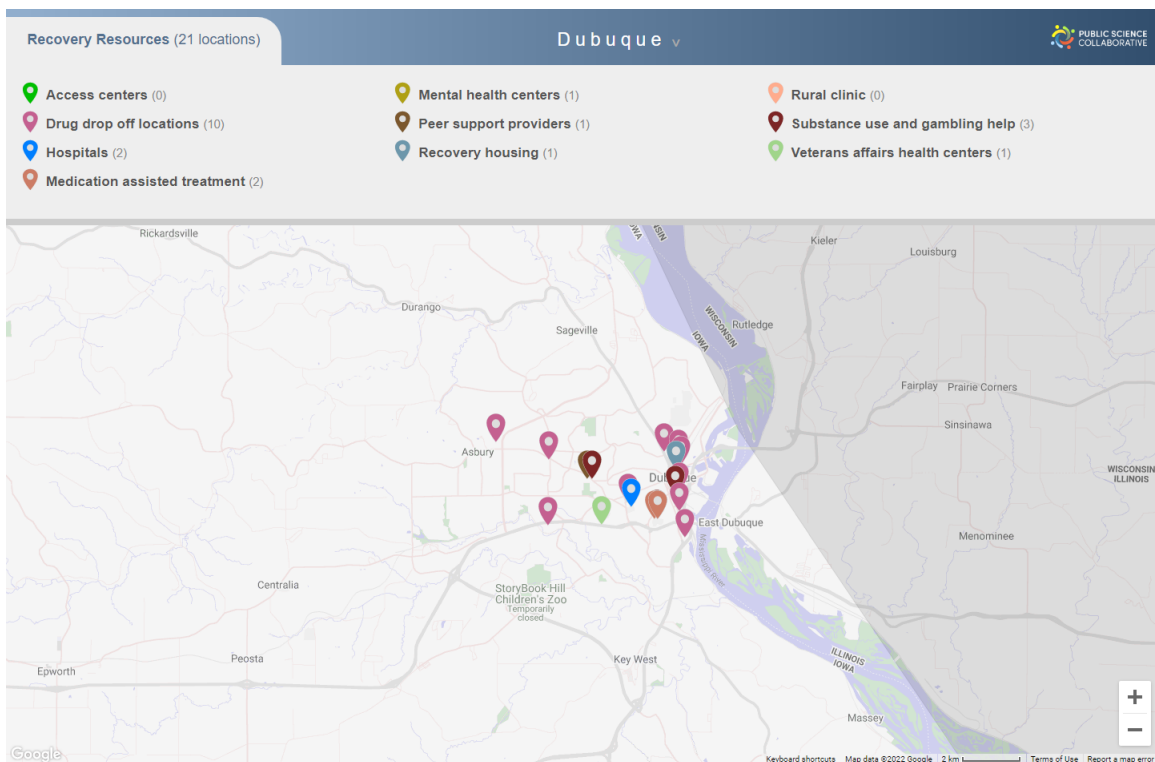
Dubuque has about 57 peer support meeting locations in a given week. Figure 2. indicates the location of these meetings as well as locations where there are few or no weekly meetings, which may help local peer support groups to identify new places to sponsor a meeting and support local recovery. The number of meetings held by each group is tabulated in the top panel of this figure indicating the prominence of different peer support organizations in the community.

What Recovery Resources Are Available in Your Area?

Despite their importance, community-based recovery resources can be hard to find. Whether a person is new to the community or a long-term resident, some resources remain unknown to many people in the community. The PSC Recovery Resource Locator aims to help solve this problem. Figure 3 is a screen capture of the PSC Recovery Resource Locator where you can see the location of some of the resources your community offers to its recovery community. A web version of this map is available at: <http://public-science.org/reportmaps/recoveryresources/?city=Dubuque>. A full listing of these resources is provided as a table with resource name, type, and location in Appendix 3.

Dubuque has 29 recovery resources available to support its residents in recovery from substance use disorders. These resources provide a variety of services and care to respond to the needs of individuals in the community. Drug drop off locations allow individuals to dispose of their unneeded prescription drugs to limit abuse of these substances. Medication assisted therapy helps alleviate withdrawal symptoms for individuals in recovery. Mental health resources are also an important resource in helping treat mental health challenges associated with SUD. Mutual aid and recovery housing groups are designed to provide a community of support to help address the material needs of people using substances. Finally, SUD treatment facilities and Veterans Affairs health clinics provide medical care to individuals using substances. These resources and others like them are tabulated in the top panel of Figure 3 to provide insight into strong and weak areas in community recovery resources.

Fig. 3. Recovery Resources in Dubuque

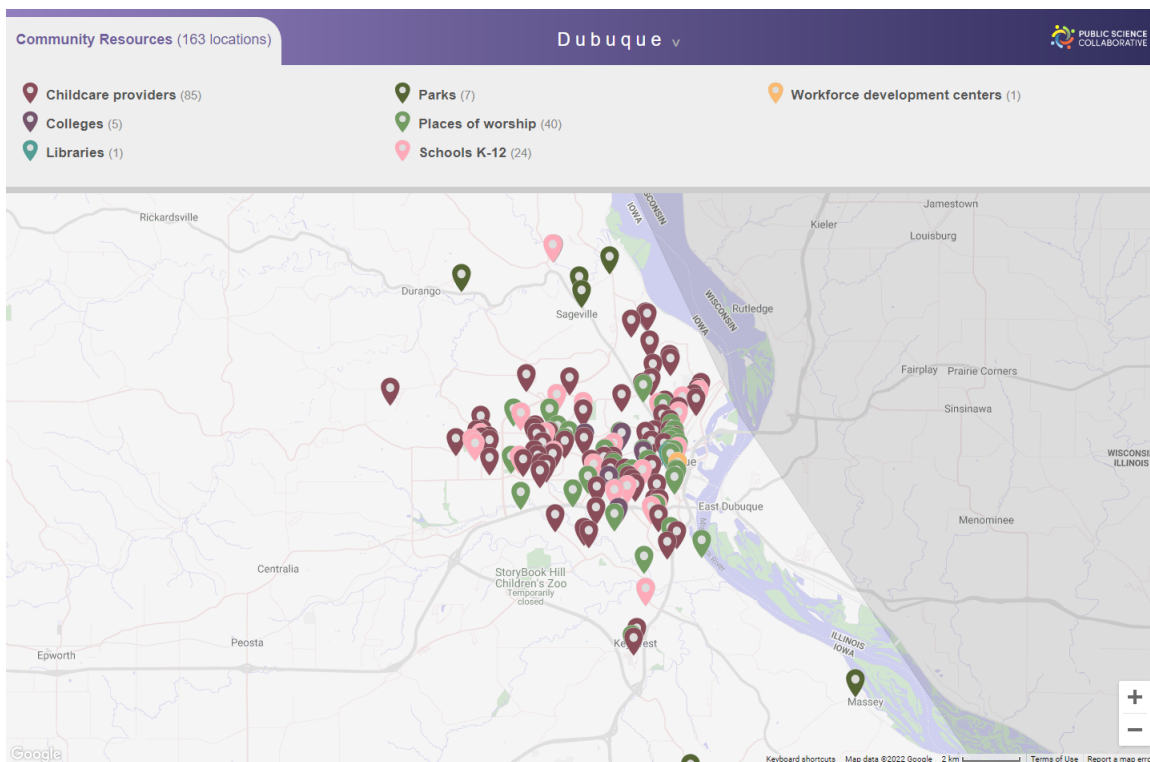


What Community Resources Are Available in Your Area?

In addition to peer support meetings and clinical care, people in recovery benefit from other community resources. For example, having easy access to parks and natural areas has been shown to support substance use recovery. Participation in community groups, including religious organizations, may be a source of strength and support for many people in recovery. We have identified many additional community assets that can help people in their own recovery journey. The state of Iowa has a wide range of public and private institutions and organizations dedicated to providing health and human services, support, and activities to improve quality of life and well-being of all Iowans. The PSC Community Resource Locator is a utility for discovering many of these resources. Figure 4 is a screen capture of the PSC Community Resource Locator where you can see the location of some of the resources your community offers to its recovery community. A web version of this map is available at: <http://public-science.org/reportmaps/communityresources/?city=Dubuque>. A full listing of these resources is provided as a table with resource name, type, and location in Appendix 4.

Dubuque has 162 community resources available for its residents to live their best lives and to support those in recovery from substance use disorders. These may include childcare providers, universities and technical colleges, libraries, parks, places of worship, K-12 schools, and workforce development centers. The number of each type of resource is broken down in Figure 4., highlighting areas of success and areas for growth in your community.

Fig. 4. *Community Resources in Dubuque*

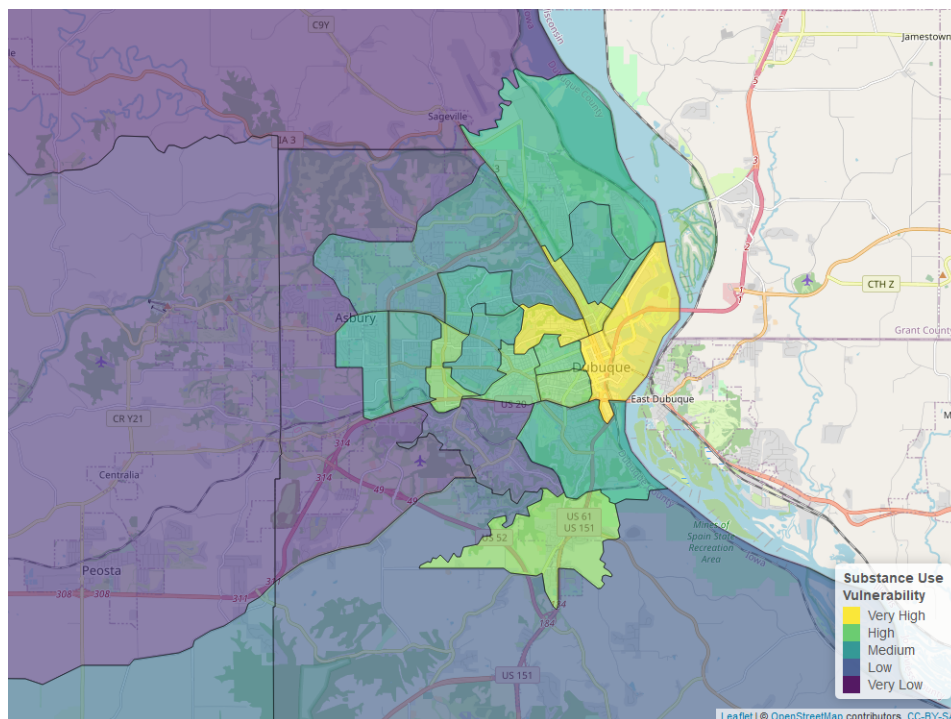


Which Neighborhoods in Your Community Need Additional Health Resources and Support?

The Public Science Collaborative has developed data resources to help community organizations, local governments, and public health practitioners to more effectively target substance use prevention, treatment, and recovery interventions to the places in greatest need of resources. Geographic ‘hot spots’ identify places where local residents are at especially high risk for substance use disorder. We estimated statistical models using administrative data from the Treatment Episode Admissions Dataset (TEDS-A) and the National Survey of Drug Use and Health (NSDUH) to measure significant relationships between substances of misuse and socio-demographic characteristics known to affect health equity and substance use vulnerability. Neighborhood characteristics associated with each substance (e.g. methamphetamine, benzodiazepines) were overlaid with Census Bureau estimates of these same neighborhood characteristics, by census tract. Once mapped, these data help us to identify places with especially high concentrations of at-risk characteristics in need of targeted resources to reduce health inequities. You can learn more about the underlying models for this index in Appendix 1. The resulting maps are included in the pages that follow, and interactive maps can be found online at https://publicsciencecollaborative.shinyapps.io/iowa_sdoth/ and https://publicsciencecollaborative.shinyapps.io/ia_substance_use_vulnerability/.

Towns and cities in Iowa typically have neighborhoods with distinctive risk profiles, with some at especially high (or low) risk of harmful use of a specific substance, such as Heroin, Opioids, or Methamphetamine. Identification of these locations can guide public health outreach efforts and enable more targeted, substance-specific interventions based upon known neighborhood risk factors. To do so, we have developed a city map to identify overall substance use vulnerability, which can be used to support generalized substance use prevention, treatment, and recovery interventions (Figure 5). Maps pertaining to Opioid, Heroin, and Methamphetamine use are included to help identify trends specific to these specific drugs (Figures 6, 7, 8). Typically, areas high in overall substance use vulnerability are also high in substance use. When this is the case, it suggests that general health resources would benefit these places and their residents. If a particular neighborhood is high in a specific substance, drug-specific interventions may be an effective tool in supporting the area.

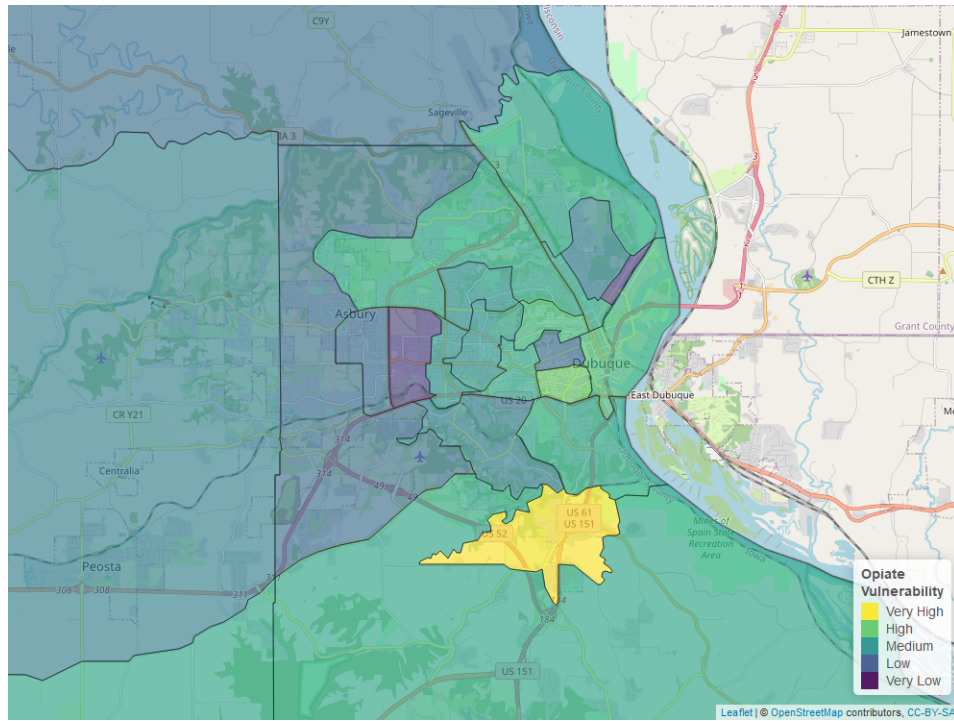
Fig. 5. *Neighborhood Vulnerability Index, All Substance Use*



Overall substance use vulnerability varies by neighborhood in Dubuque, but is generally higher than other communities in Iowa (see Figure 5). Due to neighborhood vulnerability, specific neighborhoods may benefit from a targeted approach rather than community wide efforts. Community-wide vulnerability was highest for heroin,

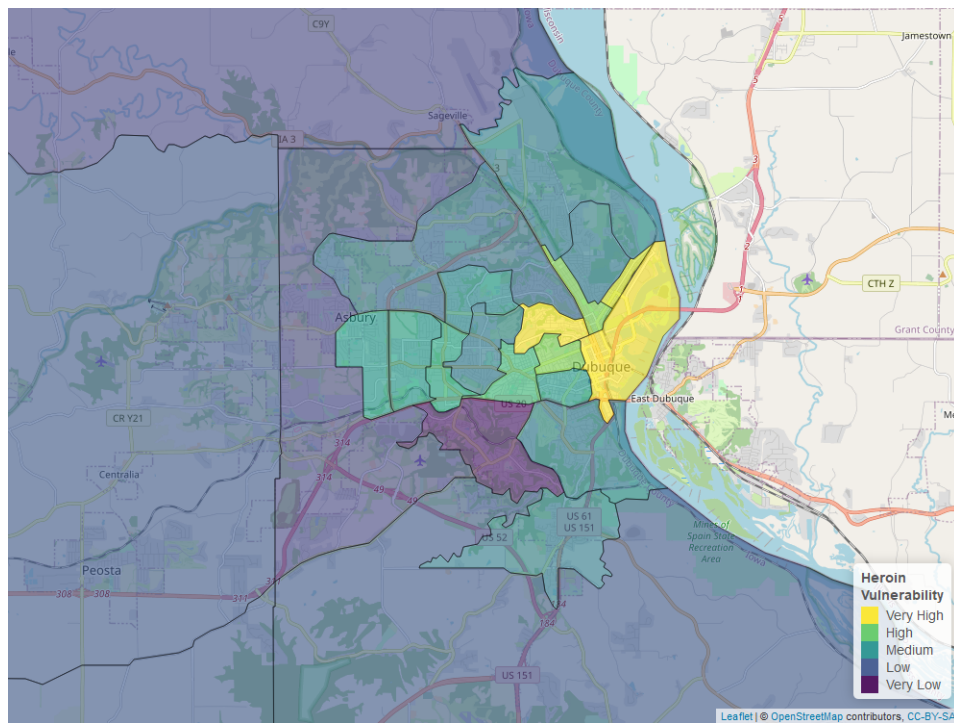
and a breakdown for each substance is shown in the figures below.

Fig. 6. Neighborhood Vulnerability Index, Opioid Use



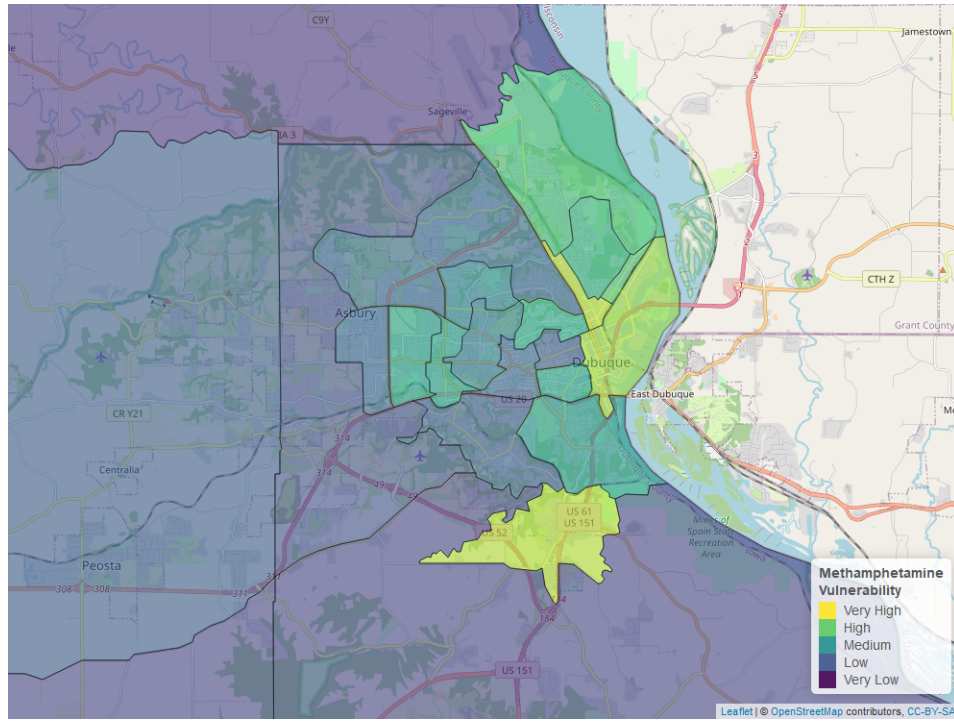
The overall opioid risk in Dubuque is about equal to the average for communities in Iowa (see Figure 6).

Fig. 7. Neighborhood Vulnerability Index, Heroin Use



The overall heroin risk in Dubuque is about equal to the average for communities in Iowa (see Figure 7).

Fig. 8. Neighborhood Vulnerability Index, Methamphetamine Use

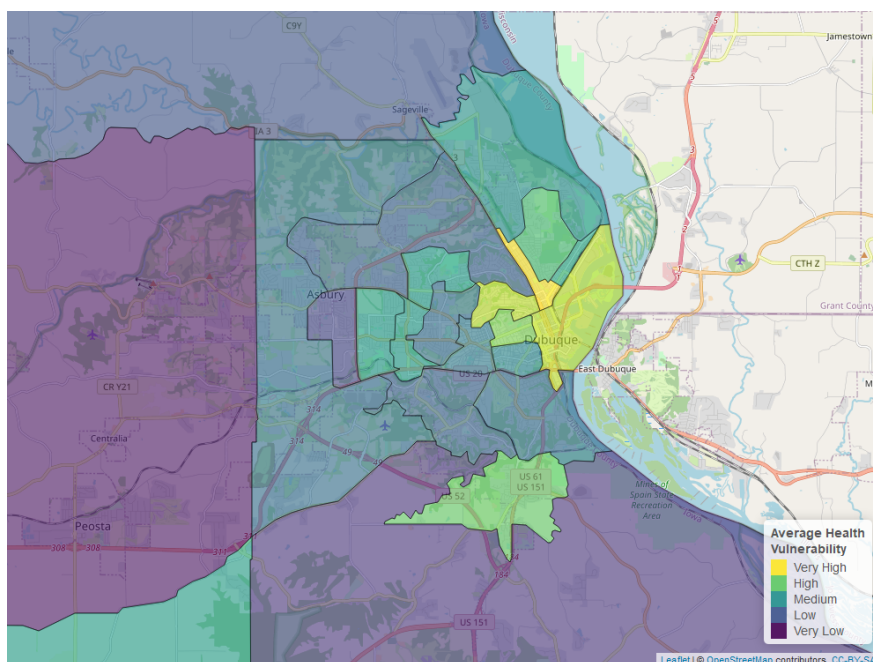


The overall meth risk in Dubuque is about equal to the average for communities in Iowa (see Figure 8).

What's Driving Health Disparities in Your Community?

In addition to the neighborhood vulnerability maps above, the Public Science Collaborative created a neighborhood map to understand health disparities in Dubuque that draws on well-established social determinants of health. By social determinants, we refer to health risks that are social in origin and tend to be unevenly distributed within a city or town. For example, in places with high average levels of education and low unemployment rates, residents tend to also have better overall health (e.g. longer life span and more healthy years of living). In places where average incomes are low and the rates of single parenting are high, people often have worse health, including higher death rates due to overdose and fewer healthy days. Knowing something about where the social determinants of health support well being and where their scarcity decreases well being can help local community organizations and governments to better target investments to reduce health disparities between neighborhoods.

Fig. 9. *Neighborhood-Level Health Disparities, Social Determinants*



According to the social determinants we considered, unemployment is the biggest risk factor for poor health and between neighborhood health disparities in Dubuque. Overall, health risks in Dubuque are about equal to the average for communities in Iowa.

APPENDIX 1: Data Used in this Report

10.1 Recovery Ready Community Index (RRCI)

Data Tool:	Recovery Ready Community Index
Data:	Data: PSC Meeting Finder Tool data; PSC Recovery Resources Locator Tool data; PSC Community Resources Tool data, U.S. Census Bureau American Community 5-year Estimates (ACS), 2015-2019

The Recovery Ready Community Index was designed to give a holistic view of a community’s “recovery readiness” and their ability to support people in recovery. The RRCI is constructed with four sub-measures: Breadth of Recovery Resources, Depth of Recovery Resources, Size of Recovery Culture, and Strength (Vibrancy) of Recovery Culture. You can read more about how the RRCI was developed on page two of this report. The specific recovery and community data collected to build the RRCI are detailed below and listed by name and source in Appendices 2, 3, and 4

10.2 PSC Meeting Finder Tool

Interactive Tool:	http://public-science.org/meetingfinder/
Data updated daily:	<i>Adult Children of Alcoholics, Al-Anon/Alateen, Alcoholics Anonymous (AA), Buddhist recovery, Celebrate Recovery, CRUSH, Crystal Meth Anonymous, Dual Recovery Anonymous, Nar-Anon, Narcotics Anonymous (NA), Pill Anonymous, Refuge Recovery, and SMART Recovery</i>

Under the hood, the PSC Meeting Finder Tool is a data pipelining system that fetches the information of the 13 different types of recovery meetings from their original sources, and integrates them into a state map (Following Figure). This system is composed of four major logical components: (1) automated robots that oversee and ‘scrape’ the peer-support websites for daily updates, (2) database infrastructure, (3) the web server infrastructure, and (4) PSC Meeting Finder web-based application. There are two types of automated program robots, called ‘bots’, utilized in this system: commander bots and scraper bots. The commander bot is in charge of running and logging the scraper bots, and reports to the system administrator when a scraper bot is unsuccessful. A scraper bot is in charge of scrapping the original listing websites, and populating the database with the cleaned data. The original listings might be unstructured and contain dirty data. It is the scraper bot’s duty to make sure that the data that is inserted into the database is clean and structured. These data are then pulled into the users’ browser by the PSC Meeting Finder Tool.

Table 1. *Peer Support Meeting Information for Dubuque*

Name of Meeting	Web Resource	# of locations	# of meetings per week
Adult Children of Alcoholics	https://adultchildren.org/	10	4
Al-Anon/Alateen	https://al-anon.org	16	16
Alcoholics Anonymous	https://www.aa-iowa.org/	62	60

Recovery meetings data are gathered and cleaned from 13 web-based resources via our data pipeline system. Most of these resources utilize web scraping techniques (in Python by standard requests or packages such as Selenium and BeautifulSoup packages) as well as parsing PDF (Python: PyPDF2 package) files and XLS sheets (Python: csvkit). Table 1 identifies the name of the meeting, web resource, number of locations, and number of meetings per week.

Fig. 10. PSC Meeting Finder Tool - Under the Hood



10.3 PSC Resource Recovery Tool

Interactive Tool:

<http://public-science.org/recoveryresources>

Data updated yearly:

Iowa Office of Drug Control Policy; Wikipedia of Iowa hospitals; Iowa Department of Public Health; Recovery and Resilience Coordinator with AmeriCorpAllTreatment.com; TransitionalHousing.org; WomenSoberHousing.com; Addicted.org; Recovery.org; Drug-rehabs.org; Iowa Association of Rural Health Clinics; U.S. Department of Veterans Affairs

Recovery resources include access centers, drug drop off locations, hospitals, medication assisted treatment locations, mental health centers, peer support providers, recovery housing, rural clinics, SUD and problem gambling treatment locations, and Veterans Affairs health centers. To collect this data, we used a variety of public resources, including government agencies and recovery websites. Our collection of recovery resources is not necessarily exhaustive, but represents the data accessed through our initial effort and following the advice of substance use experts and researchers. This data was acquired through a variety of means, including simple downloads, manual data entry, computer reading of PDF files, and scraping websites. See the table below for the recovery resources data sources.

Table 2. *Recovery Resource Locator Tool Data Sources (Downloaded Sept 2020-May 2021)*

Resource	Data Source	Website Link
Access Centers	Manual Addition	
Drug Drop Off Locations	Iowa Office of Drug Control Policy	https://geodata.iowa.gov/datasets/rx-drop-off-locations-1?geometry=-101.674%2C40.504%2C-84.986%2C43.364
Hospitals	Wikipedia list of Iowa hospitals	https://en.wikipedia.org/wiki/List_of_hospitals_in_Iowa
Medication Assisted Treatment Locations	Iowa Department of Public Health	https://idph.iowa.gov/mat
Mental Health Centers	Iowa Department of Public Health	https://dhs.iowa.gov/sites/default/files/MHDDAccreditedProviders_32.pdf?082320201508
Recovery Housing	AllTreatment.com; TransitionalHousing.org; WomenSoberHousing.com; Addicted.org; Recovery.org; Drug-rehabs.org	AllTreatment.com;TransitionalHousing.org;WomenSoberHousing.com;Addicted.org;Recovery.org;Drug-rehabs.org
Rural Clinics	Iowa Association of Rural Health Clinics	https://iarhc.org/find-a-rural-health-clinic?view=map
SUD and Problem Gambling Treatment Locations	Iowa Department of Public Health	https://idph.iowa.gov/Portals/1/userfiles/166/Licensure/All%20Licensed%20Substance%20Use%20Disorder%20-%20Problem%20Gambling%20Program%27s%20List.pdf
Veterans Affairs Health Centers	U.S. Department of Veterans Affairs	https://www.va.gov/directory/guide/state.asp?STATE=IA&dnum=ALL

10.4 PSC Community Resource Locator Tool

Interactive Tool:

<http://public-science.org/communityresources>

Data updated yearly:

Iowa Department of Human Services; Wikipedia of Iowa colleges; Institute of Museum and Library Services, Public Libraries Survey; MyCountyParks.com; USGS Geographic Names Information System; Iowa Dept of Education; Iowa Workforce Development

Community resources include childcare providers, colleges, libraries, parks, places of worship, K-12 schools, and workforce development centers. To collect this data, we used a variety of public resources, including government agencies and recovery websites. Our collection of community resources is not necessarily exhaustive, but represents the data accessed following the advice of substance use experts and researchers. This data was acquired through a variety of means, including simple downloads, manual data entry, computer reading of PDF files, and scraping websites. See the table below for the community resources data sources.

Table 3. *Community Resource Locator Tool Data Sources (Downloaded Sept 2020-April 2021)*

Resource	Data Source	Website Link
Childcare Providers	Iowa Department of Human Services	http://ccmis.dhs.state.ia.us/ClientPortal/ProviderLocator.aspx
Colleges	Wikipedia list of Iowa colleges	https://en.wikipedia.org/wiki/List_of_colleges_and_universities_in_Iowa
Public Libraries	Institute of Museum and Library Services	https://www.ims.gov/research-evaluation/data-collection/public-libraries-survey
Parks	MyCountyParks.com	https://www.mycountyparks.com/County/Default.aspx
Places of Worship	USGS Geographic Names Information System	https://data.iowa.gov/Physical-Geography/Iowa-Church-Buildings/juvk-dad9
K-12 Schools	Iowa Department of Education	Public Schools: https://educateiowa.gov/documents/directories/2020/09/2020-21-iowa-public-school-building-directory
		Private Schools: https://educateiowa.gov/documents/directories/2020/09/2020-21-iowa-non-public-school-building-directory
Workforce Development Centers	Iowa Workforce Development	https://www.iowaworkforcedevelopment.gov/contact

10.5 Substance Use Vulnerability Index

Data Tool:

Substance Use Vulnerability Index

Data:

Treatment Episode Data Set-Admission and Discharge (TEDS), 2000-2018 National Survey on Drug Use and Health data (NSDUH), 2015-2019 U.S. Census Bureau American Community 5-year Estimates (ACS), 2015-2019

Geographic ‘hot spots’ of people at risk for substance use disorder were first predicted based on models of administrative data from Treatment Episode Data on admissions (TEDS) and the National Survey of Drug Use and Health (NSDUH) data that assessed significant relationships between key substances and socio-demographic characteristics known to affect health equity and substance use vulnerability (Tables 5-6 results below). Then, the significant predictions of risk for each substance were overlaid with Census Bureau’s American Community Survey 5-year estimates of these population characteristics to provide a visual representation of places with especially high concentrations of people with at-risk characteristics. The Census characteristics described in Table 4 below are reported in Figures 5-8

Table 4. *Substance Use Risk Index using U.S. Census Bureau American Community 5-year Estimates (2015-2019)*

Risk Characteristics	Census Table	Description
Age	B06001	Data table includes population by age categories.
Sex	B01001	Data table includes population by sex.
Poverty Status	S1701_C01	Data table includes poverty status by age bracket and for different income levels.
Marital Status	B12001	Data table includes marital status by sex.
Parental Status	B09002	Data table includes parental and childcare status.

Table 5. *Substance Use Risk Index using TEDS Admission Data*

Risk Characteristics	Alcohol	Cannabis	Meth	Cocaine	Other Opiates	Heroin	Benzos
Age	Older, >35	Young, <35, <25	Middle age	>45	<25	Spikes at both ends	<25
Sex	Male	Male	Female			Male	Female
Race	Black, Hispanic	Black	White	Non-white	Asian, white	Non-white	White
Education		No college	No college	Some college	Some college	Some college	Some college
Poverty	Public Assistance	Public Assistance		Retired/Disabled	Wages/Salary, Retired/Disabled	Wages/Salary, Retired/Disabled	
Employment	Employed	Part time	Unemployed	Employed	Unemployed		Part time
Marital Status			Separated, Divorced, Widowed	Single	Married	Single	
Pop Density	Rural, Micro	Rural, Micro	Micro	Metro	Metro	Metro	Metro, Micro

Table 6. *Substance Use Risk Index using NSDUH Data*

Risk Characteristics	Alcohol	Cannabis	Meth	Cocaine	Other Opiates	Heroin	Benzos
Age	26-34	Young, <35, <25	Middle age	18-34	<50	26-49	18-34
Sex	Male	Male	Male	Male	Male	Male	Male
Race	White	White, Native American	White, Native American	White, Native American	White, Native American	White	White
Education	College	Some college, maybe	No college		No college	No college	
Income	>75,000	<20,000	<40,000	<20,000	<40,000	<20,000	
Employment	Employed	Unemployed	Unemployed	Unemployed	Unemployed	Unemployed	Unemployed
Marital Status	Single, separated	Single	Separated, Divorced	Single	Single	Single	Single
Pop Density	Metro	Metro	Non-metro	Metro	Metro	Metro	Metro

10.6 Social Determinants of Health Index

Data: Social Determinants of Health Index

Data: *U.S. Census Bureau American Community 5-year Estimates (ACS), 2015-2019*

The Social Determinants of Health Index was developed to promote health equity through providing a better understanding of the environments that create and ameliorate the multifactorial risk factors of substance misuse on priority populations. All data for the Substance Use Vulnerability Index comes from the U.S. Census Bureau American Community Survey 5-year estimates (2015-2019). The 5-year pooled dataset represents 60 months of data that enable more precise multi-year estimates. Because many of Iowa’s counties have relatively small populations, the 5-year set of pooled data is the only type of ACS estimates that are available to use across all 99 counties. Following the standards set by *Washington State’s Social Determinants of Health Website* (www.doh.wa.gov/DataandStatisticalReports/HealthDataVisualization/SocialDeterminantsofHealthDashboards/CensusTractSocialDeterminantsofHealth), PSC collected information on the educational attainment level, health insurance coverage, English proficiency, unemployment, and poverty status in each county and then used this information to calculate the average health index for each of Iowa’s 99 counties

Table. 7. *Substance Use Risk Index using U.S. Census Bureau American Community 5-year Estimates (2015-2019)*

Risk Characteristics	Census Table	Description
Educational Attainment	S1501	Data table includes educational attainment level for population 25+, by sex.
Health Insurance Coverage	S2701_C05_001	Variable is percent of civilian noninstitutionalized population that is uninsured.
English Proficiency	S1601_C06_001	Variable is percent of population 5+ that speaks English less than very well.
Unemployment, 16+	S2301_C04_001	Variable is percent of population 16+ that is in the labor force, but is unemployed.
Poverty Status	S1701_C01	Data table includes poverty status by age bracket and for different income levels.

The Social Determinants of Health Index was developed to promote health equity through providing a better understanding of the environments that create and ameliorate the multifactorial risk factors of substance misuse on priority populations. All data for the Substance Use Vulnerability Index comes from the U.S. Census Bureau American Community Survey 5-year estimates (2015-2019). The 5-year pooled dataset represents 60 months of data that enable more precise multi-year estimates. Because many of Iowa’s counties have relatively small populations, the 5-year set of pooled data is the only type of ACS estimates that are available to use across all 99 counties. Following the standards set by *Washington State’s Social Determinants of Health Website* (www.doh.wa.gov/DataandStatisticalReports/HealthDataVisualization/SocialDeterminantsofHealthDashboards/CensusTractSocialDeterminantsofHealth), PSC collected information on the educational attainment level, health insurance coverage, English proficiency, unemployment, and poverty status in each county and then used this information to calculate the average health index for each of Iowa’s 99 counties

Appendix 2: Peer Support Contacts in Your Area

Table 8. Appedix 2

Type	Name	Meetings per Week	Meeting Location
AA	12 Steps Group	1	3342 John Wesley Dr, Dubuque, IA 52002, USA
AA	1st 164 Pages Group	1	1646 Asbury Rd, Dubuque, IA 52001, USA
AA	24 Hour Group	1	1166 Main St, Dubuque, IA 52001, USA
AA	Attitude Adjustment Group	1	1166 Main St, Dubuque, IA 52001, USA
AA	Day At A Time Group	2	1646 Asbury Rd, Dubuque, IA 52001, USA
AA	Dubuque Beginners Group	1	1646 Asbury Rd, Dubuque, IA 52001, USA
AA	Early Birds Grapevine Group	1	1646 Asbury Rd, Dubuque, IA 52001, USA
AA	Family Afterwards BB Study Gp	1	1240 Rush St, Dubuque, IA 52003, USA
AA	Founders Group	1	1166 Main St, Dubuque, IA 52001, USA
AA	Grapevine Early Bird Group	1	1670 Asbury Rd, Dubuque, IA 52001, USA
AA	Happy Hour Group	1	1646 Asbury Rd, Dubuque, IA 52001, USA
AA	Hi Noon Group	1	1166 Main St, Dubuque, IA 52001, USA
AA	Jaywalkers Group	1	2001 Asbury Rd, Dubuque, IA 52001, USA
AA	Keyway Lodge Group	1	3342 John Wesley Dr, Dubuque, IA 52002, USA
AA	Live and Let Live Group	1	1646 Asbury Rd, Dubuque, IA 52001, USA
AA	Living Room Discussion Group	1	1646 Asbury Rd, Dubuque, IA 52001, USA
AA	Living Sober Group	1	1646 Asbury Rd, Dubuque, IA 52001, USA
AA	Messenger Group	1	1646 Asbury Rd, Dubuque, IA 52001, USA
AA	Missing Link Group	1	1166 Main St, Dubuque, IA 52001, USA
AA	Pass It On Group	1	1646 Asbury Rd, Dubuque, IA 52001, USA
AA	Rule 62 Group	1	1646 Asbury Rd, Dubuque, IA 52001, USA
AA	Saturday Night Special Group	1	1646 Asbury Rd, Dubuque, IA 52001, USA
AA	Sober Sisters Group	1	1670 Asbury Rd, Dubuque, IA 52001, USA
AA	Solutions Big Book Study	1	1670 Asbury Rd, Dubuque, IA 52001, USA
AA	Unity Step Group	1	1646 Asbury Rd, Dubuque, IA 52001, USA
AA	Vision For Hope Group	1	1670 Asbury Rd, Dubuque, IA 52001, USA
AA	Wednesday Morning 24 Hr. Group	1	1646 Asbury Rd, Dubuque, IA 52001, USA
AA	Wednesday Night Womens Step Grp	1	1166 Main St, Dubuque, IA 52001, USA
AA	Womens Discussion Group	1	1670 Asbury Rd, Dubuque, IA 52001, USA
AA	Womens Solution Group	1	1670 Asbury Rd, Dubuque, IA 52001, USA
	Back to Basics	1	Main St and 12th St, Dubuque, IA 52001, USA
	It Works- How and Why	1	1166 1, 2 Main St, Dubuque, IA 52001, USA
	Just For Today	2	1166 1, 2 Main St, Dubuque, IA 52001, USA
	Just For Today	3	Main St and 12th St, Dubuque, IA 52001, USA
	Keep It Real	1	1166 1, 2 Main St, Dubuque, IA 52001, USA
	Miracles Happen	1	1166 1, 2 Main St, Dubuque, IA 52001, USA
	Misfits with Attitude	1	1166 1, 2 Main St, Dubuque, IA 52001, USA
	Monday Night Munchies	1	2723 University Ave, Dubuque, IA 52001, USA
	Topic Meeting	1	1166 1, 2 Main St, Dubuque, IA 52001, USA
ACA	Keep it Simple IA0034	1	90 Main St 208, Dubuque, IA 52001, USA

AlAnon	Hope for Teens	1	3342 John Wesley Dr, Dubuque, IA 52002, USA
AlAnon	Julien AFG	1	1670 Asbury Rd, Dubuque, IA 52001, USA
AlAnon	Missing Link AFG	1	3342 John Wesley Dr, Dubuque, IA 52002, USA
AlAnon	Monday Morning AFG	1	3342 John Wesley Dr, Dubuque, IA 52002, USA
AlAnon	Noon Rush AFG	1	2001 St Joseph St, Dubuque, IA 52001, USA
AlAnon	Saturday Morning AFG	1	3342 John Wesley Dr, Dubuque, IA 52002, USA
AlAnon	Thursday Night AFG	1	1670 Asbury Rd, Dubuque, IA 52001, USA
AlAnon	Westside AFG	1	1646 Asbury Rd, Dubuque, IA 52001, USA

Appendix 3: Recovery Resources in Your Area

Table 9. Dubuque Recovery Resource Type, Name of Business, and Address of Business

Resource	Name	Address
Drug Drop Off Location	Dubuque County Sheriff's Office	770 Iowa Street, Dubuque, Iowa 52004
Drug Drop Off Location	Hartig Drug	1600 University Ave., Dubuque, Iowa 52001
Drug Drop Off Location	Hartig Drug	127 Locust St, Dubuque, Iowa 52001
Drug Drop Off Location	Hartig Drug	2225 Central Ave, Dubuque, Iowa 52001
Drug Drop Off Location	Hartig Drug	2255 John F Kennedy Road #16, Dubuque, Iowa 52002
Drug Drop Off Location	Hy-Vee Pharmacy	2395 NW Arterial, Dubuque, Iowa 52002
Drug Drop Off Location	Hy-Vee Pharmacy #1 (1159)	3500 Dodge Street, Dubuque, Iowa 52003
Drug Drop Off Location	Hy-Vee Pharmacy #3 (1162)	400 S. Locust, Dubuque, Iowa 52003
Drug Drop Off Location	Infocus Pharmacy	1690 Elm Street, Dubuque, Iowa 52001
Drug Drop Off Location	MercyOne Dubuque Elm Pharmacy	1920 Elm Street, Dubuque, Iowa 52001
Hospital	MercyOne Dubuque Medical Center	250 Mercy Dr, Dubuque, IA 52001
Hospital	UnityPoint Health-Finley Hospital	350 N Grandview Ave, Dubuque, IA 52001
Medication Assisted Treatment	Medical Associates: Dubuque - Amber Kemp NP	1000 Langworthy St, Dubuque, IA 52001
Medication Assisted Treatment	Mercy Dubuque - Dr. Adib Kassas M.D.	200 Mercy Drive, Dubuque, IA 52001
Medication Assisted Treatment	Mercy Medical Center-Dubuque - Dr. Thomas Boxleiter M.D.	200 Mercy Drive, Dubuque, IA 52001
Mental Health Center	Hillcrest Family Services	2005 Asbury Rd., Dubuque, IA
Peer Support Provider	Hillcrest Family Services - Wellness Center	2445 Hillcrest, Dubuque, IA
Peer Support Provider	Hillcrest Family Services - Assertive Community Treatment	2005 Asbury Road, Dubuque, IA

Peer Support Provider	Hillcrest Family Services - Crisis Recovery Team (Mobile Crisis)	Dubuque, IA
Peer Support Provider	Hillcrest Family Services - Integrated Health Home	2489 Hillcrest Road, Dubuque, IA
Recovery Coaching	Substance Abuse Services Center	799 Main Street Suite Unit 100, Dubuque, IA
Recovery Coaching	ZTM Sobering Living	3335 Sunset Park Circle, Dubuque, IA
Recovery Housing	Opening Doors/Maria House	1561 Jackson St, Dubuque, IA
Recovery Housing	Operation Empowerment	2216 White Street, Dubuque, IA
Recovery Housing	ZTM Sober Living	3335 Sunset Park Circle, Dubuque, IA
Recovery Housing	Opening Doors/Francis Apartments	1501 Jackson St, Dubuque, IA
Recovery Housing	Opening Doors/Teresa Shelter	1111 Bluff St, Dubuque, IA
SUD and Problem Gambling Treatment Location	Hillcrest Community Mental Health	2005 Asbury Road Dubuque, 52001
SUD and Problem Gambling Treatment Location	Mercy Health Center, Turning Point	250 Mercy Drive Dubuque, 52001
SUD and Problem Gambling Treatment Location	Substance Abuse Services Center (SASC)	Nesler Center, 799 Main Street, Dubuque, 52001-6825
VA Health Center	Dubuque VA Clinic	2600 Dodge St, Ste A1, Dubuque, IA 52001

Appendix 4: Community Resources in Your Area

Table. 10. Dubuque Community Resource Type, Name of Business, and Address of Business

Resource	Name	Address
Childcare Provider	ABC Learning Early Childhood Center	15 Nightengale Ln, Dubuque, IA 52003
Childcare Provider	Finley DCY Childcare	300 N Grandview Ave, Dubuque, IA 52001
Childcare Provider	Frog Hollow Kid Campus-Asbury	5005 Asbury Rd, Dubuque, IA 52002
Childcare Provider	Grace Brade and Amy Phillips	2939 Elm Street, Dubuque, IA 52001
Childcare Provider	Grand View Child Development Center	3342 John Wesley Dr, Dubuque, IA 52002
Childcare Provider	Nicole Richey	1064 Cleveland Ave, Dubuque, IA 52003
Childcare Provider	Noah's Ark Child Development Center	1755 Delhi St, Dubuque, IA 52001
Childcare Provider	Our Little Future's Child Care	507 Sapphire Cir, Dubuque, IA 52001
Childcare Provider	Our Redeemer Lutheran Preschool	2145 John F Kennedy Rd, Dubuque, IA 52002
Childcare Provider	Peggy Stoffel	3390 Crestwood Dr, Dubuque, IA 52002
Childcare Provider	April Francois	1621 Rhomberg Ave, Dubuque, IA 52001
Childcare Provider	Heidi Kieffer	2522 Washington St, Dubuque, IA 52001
Childcare Provider	Hills and Dales Childcare	3505 Stoneman Rd, Dubuque, IA 52001
Childcare Provider	Holy Ghost Early Childhood	2981 Central Ave, Dubuque, IA 52001
Childcare Provider	Jacqueline Lewis	619 W 17th St, Dubuque, IA 52001
Childcare Provider	Jeannie Hall	4618 Cardinal Dr, Dubuque, IA 52001
Childcare Provider	Jennifer Hollister	17163 Pepper Ln, Dubuque, IA 52001
Childcare Provider	Jessica Hesselman	1645 Westridge Dr, Dubuque, IA 52002
Childcare Provider	Jessica Meyer	4503 Camelot Dr, Dubuque, IA 52002
Childcare Provider	Regina Johnson	517 Almond St, Dubuque, IA 52001
Childcare Provider	Resurrection Early Childhood	4320 Asbury Rd, Dubuque, IA 52002
Childcare Provider	Romper Stompers Childcare Center	2307 Central Avenue, Dubuque, IA 52001
Childcare Provider	Sheila Alfred	1735 Asbury Rd, Dubuque, IA 52001
Childcare Provider	Aspire Home Daycare LLC	2345 Sunnyslope Dr, Dubuque, IA 52002
Childcare Provider	Beth Schlarmann	1212 Garfield Ave, Dubuque, IA 52001
Childcare Provider	Calbonette Leatherwood	1461 Bluff St, Dubuque, IA 52001
Childcare Provider	Joann Gansen	2545 Asbury Rd, Dubuque, IA 52001
Childcare Provider	Julie Meyer	1423 Rohmberg Ave, Dubuque, IA 52001
Childcare Provider	Kathy Reuter	2203 St. John Dr, Dubuque, IA 52002
Childcare Provider	Key West Early Childhood Center	10244 Key West Dr, Dubuque, IA 52003
Childcare Provider	Shenitha Leatherwood	1233 Rhomberg Ave, Dubuque, IA 52001
Childcare Provider	Sheri Vondran	15483 Lore Mound Ct, Dubuque, IA 52002
Childcare Provider	St Anthony Early Childhood and OLG	2160 Rosedale Ave, Dubuque, IA 52001
Childcare Provider	St Columbkille Early Childhood	1220 Rush St, Dubuque, IA 52003
Childcare Provider	St. Joseph The Worker Early Childhood	2105 St Joseph Street, Dubuque, IA 52001
Childcare Provider	Carissa Blum	1848 Phyllrich Dr, Dubuque, IA 52002
Childcare Provider	Carol Ohmert	2050 Carter Rd, Dubuque, IA 52001
Childcare Provider	Carrie Cusack	1558 Parkway St, Dubuque, IA 52001
Childcare Provider	Catherine Boland	2605 Chaney Rd, Dubuque, IA 52001

Childcare Provider	CDI-Bluff Head Start Center	1584 White Street, Dubuque, IA 52001
Childcare Provider	CDI-Engine House Head Start Center	1805 Central Ave, Dubuque, IA 52001
Childcare Provider	CDI-New View Head Start Center	10502 St Joseph Dr Ste 104, Dubuque, IA 52003
Childcare Provider	CDI-Prescott Head Start Center	1151 White St, Dubuque, IA 52001
Childcare Provider	CDI-Westminster Head Start Center	2155 University Ave, Dubuque, IA 52001
Childcare Provider	CDI-Westside Head Start Center	4135 Pennsylvania Ave Ste B, Dubuque, IA 52002
Childcare Provider	Cecilia Lott-Eteng	2205 Trenton Rd, Dubuque, IA 52002
Childcare Provider	Chrystal Blauvelt	250 Southgate Dr, Dubuque, IA 52003
Childcare Provider	Kimberly Fisch	495 English Ln, Dubuque, IA 52003
Childcare Provider	Koala Kare Childcare Inc.	2216 Saint John Dr, Dubuque, IA 52002
Childcare Provider	Kriss House, Inc	2266 Doe Run Dr, Dubuque, IA 52002
Childcare Provider	Laura Cole	30 Devon Dr, Dubuque, IA 52001
Childcare Provider	Laura Benson	1625 S Grandview Ave, Dubuque, IA 52003
Childcare Provider	Theresa Jungk	1775 Key Way, Dubuque, IA 52002
Childcare Provider	Toni Eckstein	1673 Alta Pl, Dubuque, IA 52001
Childcare Provider	Tristen Wright	3177 Killarney Ct, Dubuque, IA 52001
Childcare Provider	University of Dubuque Child Care Center	1001 McCormick St, Dubuque, IA 52001
Childcare Provider	Velinda Washington	728 Peru Rd, Dubuque, IA 52001
Childcare Provider	DCY Creative Learning Center	35 N Booth St, Dubuque, IA 52001
Childcare Provider	DCY School-Age Program - Bryant	1280 Rush St, Dubuque, IA 52003
Childcare Provider	DCY School-Age Program - Carver	2007 Radford Rd, Dubuque, IA 52002
Childcare Provider	DCY School-Age Program - Eisenhower	3170 Spring Valley Rd, Dubuque, IA 52001
Childcare Provider	DCY School-Age Program - Irving	2520 Pennsylvania Ave, Dubuque, IA 52001
Childcare Provider	DCY School-Age Program - Kennedy	2135 Woodland, Dubuque, IA 52002
Childcare Provider	DCY School-Age Program - Sageville	12015 Sherrill Rd, Dubuque, IA 52001
Childcare Provider	DCY School-Age Program-Table Mound	100 Tower Dr, Dubuque, IA 52003
Childcare Provider	Deanne Johll	2149 Graham Cir, Dubuque, IA 52002
Childcare Provider	Deborah Roth	857 Berkley Pl, Dubuque, IA 52001
Childcare Provider	Debra Kotz	3525 Windsor Ave Apt 2, Dubuque, IA 52001
Childcare Provider	Diamond Padgett	2179 Northstar Dr, Dubuque, IA 52002
Childcare Provider	Dolly Walker	2113 Jackson St, Dubuque, IA 52001
Childcare Provider	Dubuque Childcare Center, LLC	3074 Cedar Crest Ct, Dubuque, IA 52003
Childcare Provider	Dubuque Montessori School	2605 Pennsylvania Ave, Dubuque, IA 52001
Childcare Provider	Early Learners CDC on Duggan	610 Duggan Dr, Dubuque, IA 52003
Childcare Provider	Early Learners CDC on Windsor	3495 Windsor Ave, Dubuque, IA 52001
Childcare Provider	Eliza Durrah	707 E 22nd St Apt 2, Dubuque, IA 52001
Childcare Provider	Mary Dye	3712 Pennsylvania Ave Apt i-92, Dubuque, IA 52002
Childcare Provider	Megan Bethany-Conner	3258 Saint Anne Dr, Dubuque, IA 52001
Childcare Provider	MercyOne Dubuque Child Development Ctr and PS	250 Mercy Dr, Dubuque, IA 52001

Childcare Provider	Mini Masterpieces Preschool Inc	1205 Cleveland Ave, Dubuque, IA 52003
Childcare Provider	Mycal Hall	897 Yale Ct, Dubuque, IA 52001
Childcare Provider	Little Leaps Learning Academy	715 W Locust St, Dubuque, IA 52001
Childcare Provider	Little Rascals Daycare and Preschool	1125 Rockdale Rd, Dubuque, IA 52003
Childcare Provider	Little Treasures	2035 Radford Rd, Dubuque, IA 52002
Childcare Provider	Lynn Goerdt	17148 Pepper Ln, Dubuque, IA 52001
Childcare Provider	Marita Theisen Childcare Center	1584 White St, Dubuque, IA 52001
Childcare Provider	Young-Uns Preschool and Child Care Center	3375 Kennedy Circle, Dubuque, IA 52002
College	Clarke University	Clarke University, Dubuque, IA
College	Emmaus Bible College	Emmaus Bible College, Dubuque, IA
College	Loras College	Loras College, Dubuque, IA
College	University of Dubuque	University of Dubuque, Dubuque, IA
College	Wartburg Theological Seminary	Wartburg Theological Seminary, Dubuque, IA
Family Support Specialists	Child Health Specialty Clinics (CHSC) - Pediatric Integrated Health	1789 Elm Street, Dubuque, IA
Family Support Specialists	Hillcrest Family Services - Integrated Health Home	2489 Hillcrest Road, Dubuque, IA
Library	Carnegie-Stout Public Library	360 W 11th St, Dubuque, IA 52001
Park	Heritage Campground and Pond	11330 Rupp Hollow Rd, Dubuque, IA 52001
Park	Interstate Power Company Forest Preserve	7523 Olde Davenport Rd, Dubuque, IA 52003
Park	Little Maquoketa River Mounds	18062 Walking Way, Dubuque, IA 52001
Park	Massey Park	9526 Massey Station Rd, Dubuque, IA 52003
Park	Mud Lake Park	22312 Golf Lake Rd, Dubuque, IA 52001
Park	Pohlman Prairie Preserve	13491 US-52, Durango, IA 52039
Park	Proving Grounds Recreation Area	10616 W John Deere Rd, Dubuque, IA 52001
Place of Worship	First Congregational Church	255 W 10th St, Dubuque, IA 52001
Place of Worship	Saint Peters German United Evangelical Lutheran Church	3200 Asbury Rd, Dubuque, IA 52001
Place of Worship	Temple Beth El	475 W Locust St, Dubuque, IA 52001
Place of Worship	Church of the Nazarene	1195 Prys St, Dubuque, IA 52001
Place of Worship	Saint Anthonys Catholic Church	1870 St Ambrose St, Dubuque, IA 52001
Place of Worship	First Baptist Church	2143 Judson Dr, Dubuque, IA 52001
Place of Worship	Saint Patricks Catholic Church	1425 Iowa St, Dubuque, IA 52001
Place of Worship	Nativity Catholic Church	1225 Alta Vista St, Dubuque, IA 52001
Place of Worship	Immanuel Congregational Church	1795 Jackson St, Dubuque, IA 52001
Place of Worship	Sacred Heart Chapel	1550 Clarke Dr, Dubuque, IA 52001
Place of Worship	Saint Raphaels Cathedral	231 Bluff St, Dubuque, IA 52001
Place of Worship	Saint Marys Catholic Church	1584 White St, Dubuque, IA 52001
Place of Worship	Saint Matthew Lutheran Church	1780 White St, Dubuque, IA 52001
Place of Worship	Summit Congregational Church	2885 John F Kennedy Rd, Dubuque, IA 52002
Place of Worship	Holy Ghost Catholic Church	2921 Central Ave, Dubuque, IA 52001
Place of Worship	Salvation Army Church	1099 Iowa St, Dubuque, IA 52001
Place of Worship	Saint Joseph Church	60 S Algona St, Dubuque, IA 52001

Place of Worship	Our Redeemer Lutheran Church	2145 John F Kennedy Rd, Dubuque, IA 52002
Place of Worship	Saint Johns Lutheran Church	1276 White St, Dubuque, IA 52001
Place of Worship	Grandview Avenue Church	419 N Grandview Ave, Dubuque, IA 52001
Place of Worship	Saint Johns Episcopal Church	1458 W Locust St, Dubuque, IA 52001
Place of Worship	United Community Ministries	255 W 10th St, Dubuque, IA 52001
Place of Worship	First Congregational Church	255 W 10th St, Dubuque, IA 52001
Place of Worship	Westminster Presbyterian Church	2155 University Ave, Dubuque, IA 52001
Place of Worship	Faith United Methodist Church	1199 Main St, Dubuque, IA 52001
Place of Worship	Christ the King Chapel	Christ the King Chapel, Dubuque, IA 52001
Place of Worship	Saint Paul Lutheran Church	2025 Jackson St, Dubuque, IA 52001
Place of Worship	Holy Trinity Lutheran Church	1755 Delhi St, Dubuque, IA 52001
Place of Worship	Saint Peter Lutheran Church	3200 Asbury Rd, Dubuque, IA 52001
Place of Worship	Word of Life Church	4450 Dodge St, Dubuque, IA 52003
Place of Worship	Dubuque Assembly of God Church	3939 Pennsylvania Ave, Dubuque, IA 52002
Place of Worship	Ressurrection Catholic Church	4300 Asbury Rd, Dubuque, IA 52002
Place of Worship	Saint Columbkilles Catholic Church	1240 Rush St, Dubuque, IA 52003
Place of Worship	Saint Lukes United Methodist Church	1199 Main St, Dubuque, IA 52001
Place of Worship	The Church of Jesus Christ of Latter-Day Saints	685 Fremont Ave, Dubuque, IA 52001
Place of Worship	First Presbyterian Church	1684 Iowa St, Dubuque, IA 52001
Place of Worship	Rockdale Church	1500 Old Mill Rd, Dubuque, IA 52003
School (K-12)	Dubuque Senior High School	1800 Clarke Dr, Dubuque, IA 52001
School (K-12)	Hempstead High School	3715 Pennsylvania Ave, Dubuque, IA 52002
School (K-12)	Thomas Jefferson Middle School	1105 Althausser Ave, Dubuque, IA 52001
School (K-12)	George Washington Middle School	51 N Grandview Ave, Dubuque, IA 52001
School (K-12)	Eleanor Roosevelt Middle School	2001 Radford Rd, Dubuque, IA 52002
School (K-12)	Carver Elementary School	2007 Radford Road, Dubuque, IA 52002
School (K-12)	Audubon Elementary School	605 Lincoln Ave, Dubuque, IA 52001
School (K-12)	Bryant Elementary School	1280 Rush St, Dubuque, IA 52003
School (K-12)	Eisenhower Elementary School	3170 Spring Valley Rd, Dubuque, IA 52001
School (K-12)	Fulton Elementary School	2540 Central Ave, Dubuque, IA 52001
School (K-12)	Hoover Elementary School	3259 St Anne Dr, Dubuque, IA 52001
School (K-12)	Irving Elementary School	2520 Pennsylvania Ave, Dubuque, IA 52001
School (K-12)	John Kennedy Elementary School	2135 Woodland, Dubuque, IA 52002
School (K-12)	Lincoln Elementary School	555 Nevada Street, Dubuque, IA 52001
School (K-12)	Marshall Elementary School	1450 Rhomberg Ave, Dubuque, IA 52001
School (K-12)	Prescott Elementary School	1151 White St, Dubuque, IA 52001
School (K-12)	Sageville Elementary School	12015 Sherrill Rd, Dubuque, IA 52002
School (K-12)	Table Mound Elementary School	100 Tower Dr, Dubuque, IA 52003
School (K-12)	St Joseph The Worker School	2105 St Joseph St, Dubuque, IA 52001
School (K-12)	St Columbkille School	1198 Rush St, Dubuque, IA 52003
School (K-12)	St Anthony School	2175 Rosedale, Dubuque, IA 52001-4198
School (K-12)	Mazzuchelli Catholic Middle School	2005 Kane Street, Dubuque, IA 52001
School (K-12)	Wahlert Catholic High School	2005 Kane St, Dubuque, IA 52001-0599
School (K-12)	Resurrection School	4320 Asbury Rd, Dubuque, IA 52002-0498
School (K-12)	Tri-State Christian	5025 Saratoga Road, Dubuque, IA 52002

