



# Recovery Iowa - Davenport 360

*August, 2022*



Report provided to the Iowa Department of Public Health

---

*This project was supported by the Iowa Department of Public Health, Bureau of Substance Abuse (IDPH) via a sub-ward from the Substance Abuse and Mental Health Services (SAMHSA) of the U.S. Department of Health and Human Services (HHS) as part of a financial assistance award totaling 350,000 with 100 percent funded by SAMHSA/HHS. The contents are those of the author(s) and do not necessarily represent the official views of, nor an endorsement by, IDPH, SMHSA/HHS, or the U.S. Government*



## Contents

<b>1 Overview</b>	<b>3</b>
<b>2 What is Recovery?</b>	<b>3</b>
<b>3 What is a Recovery Community Center?</b>	<b>3</b>
<b>4 Is Your Community Recovery Ready?</b>	<b>4</b>
<b>5 What Peer Support Meetings are Available in Your Area?</b>	<b>5</b>
<b>6 What Recovery Resources Are Available in Your Area?</b>	<b>6</b>
<b>7 What Community Resources Are Available in Your Area?</b>	<b>7</b>
<b>8 Which Neighborhoods in Your Community Need Additional Health Resources and Support?</b>	<b>8</b>
<b>9 What's Driving Health Disparities in Your Community?</b>	<b>11</b>
<b>10 APPENDIX 1: Data Used in this Report</b>	<b>12</b>
10.1 Recovery Ready Community Index (RRCI)	12
10.2 PSC Meeting Finder Tool	12
10.3 PSC Resource Recovery Tool	14
10.4 PSC Community Resource Locator Tool	15
10.5 Substance Use Vulnerability Index	16
10.6 Social Determinants of Health Index	18
<b>11 Appendix 2: Peer Support Contacts in Your Area</b>	<b>19</b>
<b>12 Appendix 3: Recovery Resources in Your Area</b>	<b>19</b>
<b>13 Appendix 4: Community Resources in Your Area</b>	<b>21</b>

---

## Overview

---

At the request of the Iowa Department of Public Health, Bureau of Substance Abuse, the Public Science Collaborative (PSC) developed community-specific reports to support recovery efforts in Iowa. Recognizing the need to strengthen substance use recovery efforts throughout the state, we identified a large number of existing recovery-oriented resources in Davenport, which we describe and map in the pages that follow. We developed additional maps to identify at-risk neighborhoods that will benefit from targeted health interventions and additional community resources. For additional questions or information about this report, the data tools described, or the Public Science Collaborative, please reach out to the principal investigators of this study, Dr. Shawn Dorius at [sdorius@iastate.edu](mailto:sdorius@iastate.edu), or Dr. Cassandra Dorius at [cdorius@iastate.edu](mailto:cdorius@iastate.edu).

---

## What is Recovery?

---

Though substance use recovery is an evolving concept that has been defined in a number of ways over the years, an emerging consensus is that recovery is a voluntary path toward improved personal well-being coupled with a diminished risk of substance use relapse. As noted by Bill White (2007):

*Recovery is the experience through which individuals, families, and communities impacted by severe alcohol and other drug (AOD) problems utilize internal and external resources to voluntarily resolve these problems, heal the wounds inflicted by AOD related problems, actively manage their continued vulnerability to such problems, and develop a healthy, productive, and meaningful life.*

In White's view, resources help individuals, families, and communities in two ways. First, they help address alcohol and other drug-related problems (for example, addiction, unemployment, housing instability, family separation), and second, they support health, productivity, and meaning in post-treatment life. The appeal of this view is that it is explicit and direct in its recognition that recovery involves not only internal resources such as mental, emotional, and genetic factors but also external ones. In thinking about where to focus federal and state resources to develop a network of community-based recovery centers in Iowa, the key question is, "What kinds of external resources matter most for sustained SUD recovery?"

*If we knew which resources were most helpful to long-run recovery, we could target towns and cities with large stocks of 'recovery resources' to grow Recovery Community Centers*

---

## What is a Recovery Community Center?

---

**Recovery Community Centers (RCCs)** represent low-cost, member-driven, voluntarist, locally managed, and community-engaged pathways to sustainable recovery for people with substance use disorder, or SUD. RCCs accomplish these goals by linking people to existing resources and infrastructure and promoting a vibrant recovery culture based in a **physical community center where people in recovery can visit, engage with others in recovery, and access resources**. RCCs are an innovative, safe, and helpful source of community recovery support that provides linkages to existing local services and resources that support recovery for people with a substance use or mental health disorder. RCCs support recovery by helping people in the community who have a history of substance use to develop recovery capital, the personal resources that enable people to live healthy, productive, and community engaged lives. RCCs do this by connecting members of the recovery community, called peers, with different types of services such as recovery coaching, medication assisted treatment, connection to employment services and child care, recovery-oriented housing, or education and workforce development training services. Located in the heart of the community, Recovery Community Centers improve the ability of the local recovery community to care for one another, and they also help destigmatize the lives of people in recovery.

The RCC model of recovery is validated by academic studies and is promoted by both the SUD community and public health officials. However, finding the right communities for RCC development in Iowa has proven difficult, underscoring the fact that Iowa is one of just a few states in the U.S. that has yet to adopt the recovery community model.

## Is Your Community Recovery Ready?

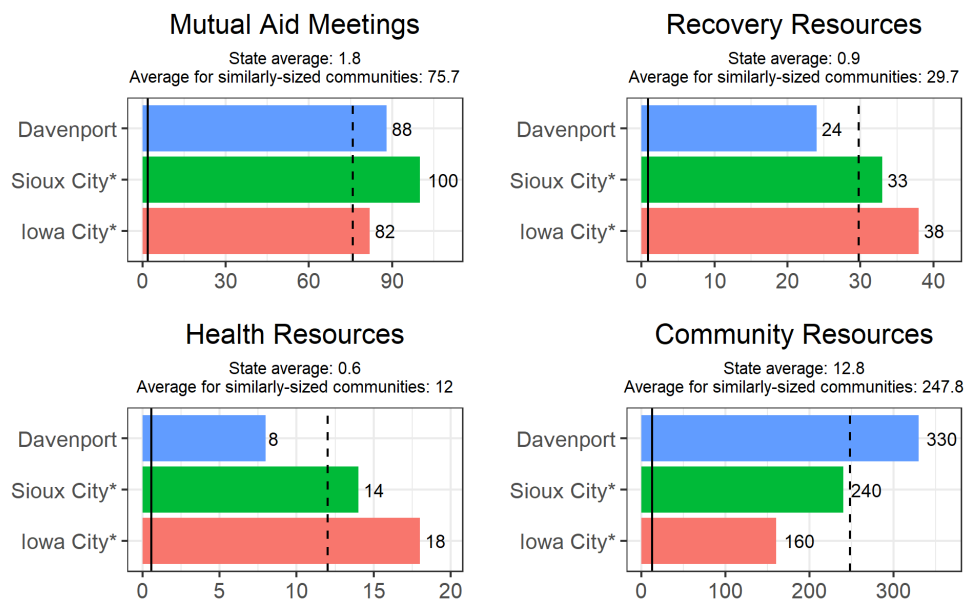
What is the RRCI and how was it created? We consulted scientific literature on substance use recovery and engaged key stakeholders who work directly with people in recovery around the country and in Iowa. This helped us to identify 17 unique community-based resources that we collected for almost all of Iowa’s 944 cities and towns. In total, we found nearly 16,000 community features that support recovery. We mapped and analyzed these resources so we could identify a short list of ‘Recovery Ready’ communities across the state, culminating in the first-of-its-kind index: **The Recovery Ready Community Index (RRCI)**.

The RRCI encompasses four dimensions: breadth, depth, size, and strength. Breadth of recovery resources was measured by counting the number of different types of recovery resources in each county and community. For example, counting if there is at least one hospital, one treatment center, and one drug drop off location in town. Depth of recovery resources was measured by first counting the total number of resources in each category and then ranking cities accordingly. This gives added importance to places that have, for example, more than one medication assisted treatment provider and many different recovery houses in town. Size of local recovery culture was measured by the total number of weekly mutual aid and peer support meetings per week in each city (e.g. total number of NA and AA meetings). Finally, the strength of the recovery community was measured as the difference between the total number of weekly peer support meetings and the number of meetings expected, based upon the total population of each town. These four dimensions were used to create the Recovery Ready Community Index. The RRCI is the simple average of each town’s ranking across the four dimensions or recovery readiness. Places that ranked high on all four dimensions are labeled as especially recovery ready.

*How recovery ready is your community? Are you well-positioned to support a Recovery Community Center in your community?* Relative to all cities, Davenport ranks low in terms of its recovery readiness. **According to the Recovery Ready Community Index (RRCI), Davenport scored 36.25, placing it at 16th when compared with other Iowa cities** (Iowa’s RRCI state average is 32.7).

Another way to understand recovery resources in Davenport is to compare them with those of the state average and other communities of similar size. This comparison is displayed in Figure 1, which compares Davenport with Sioux City and Iowa City. An average across all Iowa towns as well as the subset having a comparable population level are also included as a baseline for comparison.

**Fig. 1.** Recovery Ready Community Index: Comparison of Davenport to Other Iowa Communities on ‘Recovery Readiness’



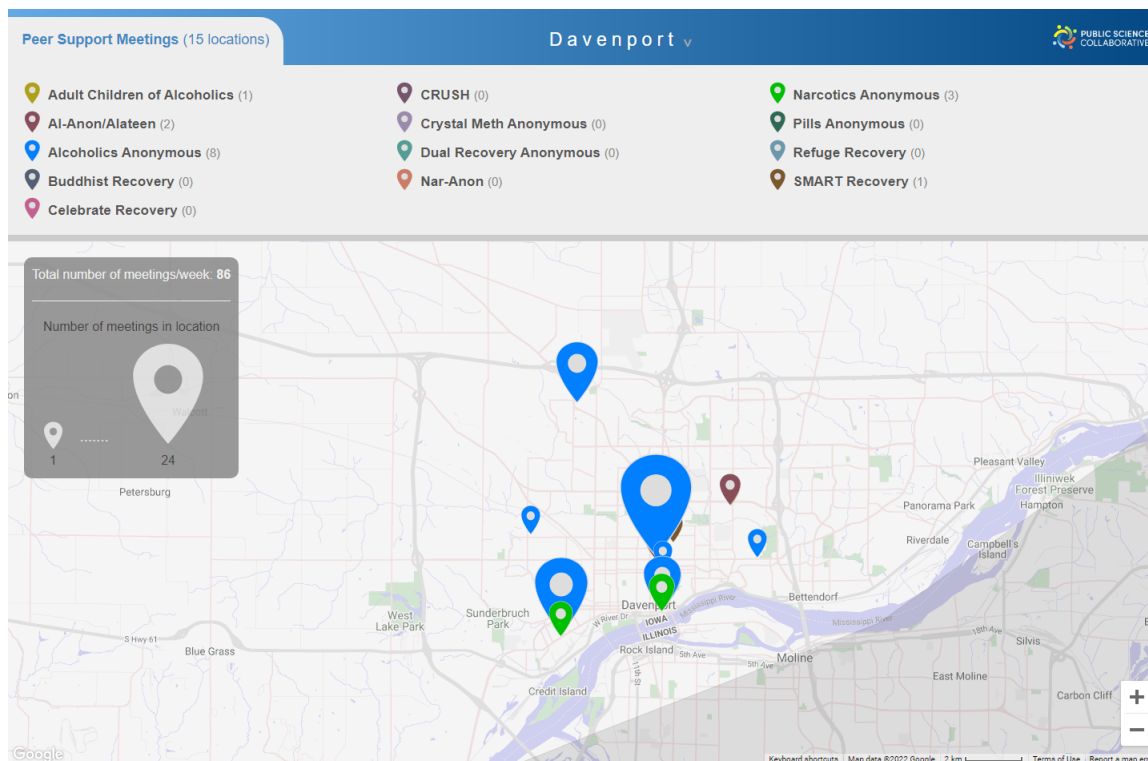
\* The Iowa cities most comparable to Davenport by population are Sioux City and Iowa City.

\*\* The solid vertical line represents the average for all 944 communities in Iowa and the dashed vertical line represents the average for Iowa communities with populations of more than 50,000 people.

## What Peer Support Meetings are Available in Your Area?

Recovery meetings, such as Alcoholics and Narcotics Anonymous, play a significant role in facilitating the recovery process. Despite the importance of these meetings there is no coherent ‘one stop shop’ to find the meeting you need, when you need it. People usually need to go through several steps, such as searching for meetings on Google, or looking for a specific meeting time or place on a local listings’ website. It can be hard enough to connect with peer support during the best of times, but doubly difficult when you are in crisis and questioning your recovery. Magnifying the challenge of finding the right meeting at the right time is being new to a community, unfamiliar with the members of a local meeting, and being in a moment of duress.

Fig. 2. Peer Support Meetings in Davenport



Note: Larger markers indicate the locations that host more than one meeting per week. For example, in Davenport there are 90 total meetings hosted each week in the locations identified above.

We developed the PSC Meeting Finder tool above to make it easier to find local meetings. We do this by presenting a map-based list of meetings all throughout Iowa and we update the map every single day. It's a simple interface that helps people to find the appropriate meetings nearby, right now. Users can filter meetings by time of day, day of week, or whether childcare is available, for example, to find the right meeting at the right time. Having a responsive design, PSC Meeting Finder Tool runs efficiently and quickly on many different kinds of computers and mobile devices such as smartphones. Figure 2 is a screen capture of the PSC Meeting Finder where you can see the location of all known peer support meetings in your community. A web version of this map is available at: <http://public-science.org/reportmaps/meetings/?city=Davenport>. Note that the peer support data is updated regularly and may not exactly match Figure 2. A full listing of these resources is provided as a table with meeting, type, group name, number of meetings per week, and location of meetings in Appendix 2.

Davenport has about 90 peer support meeting locations in a given week. Figure 2. indicates the location of these meetings as well as locations where there are few or no weekly meetings, which may help local peer support groups to identify new places to sponsor a meeting and support local recovery. The number of meetings held by each group is tabulated in the top panel of this figure indicating the prominence of different peer support organizations in the community.

---

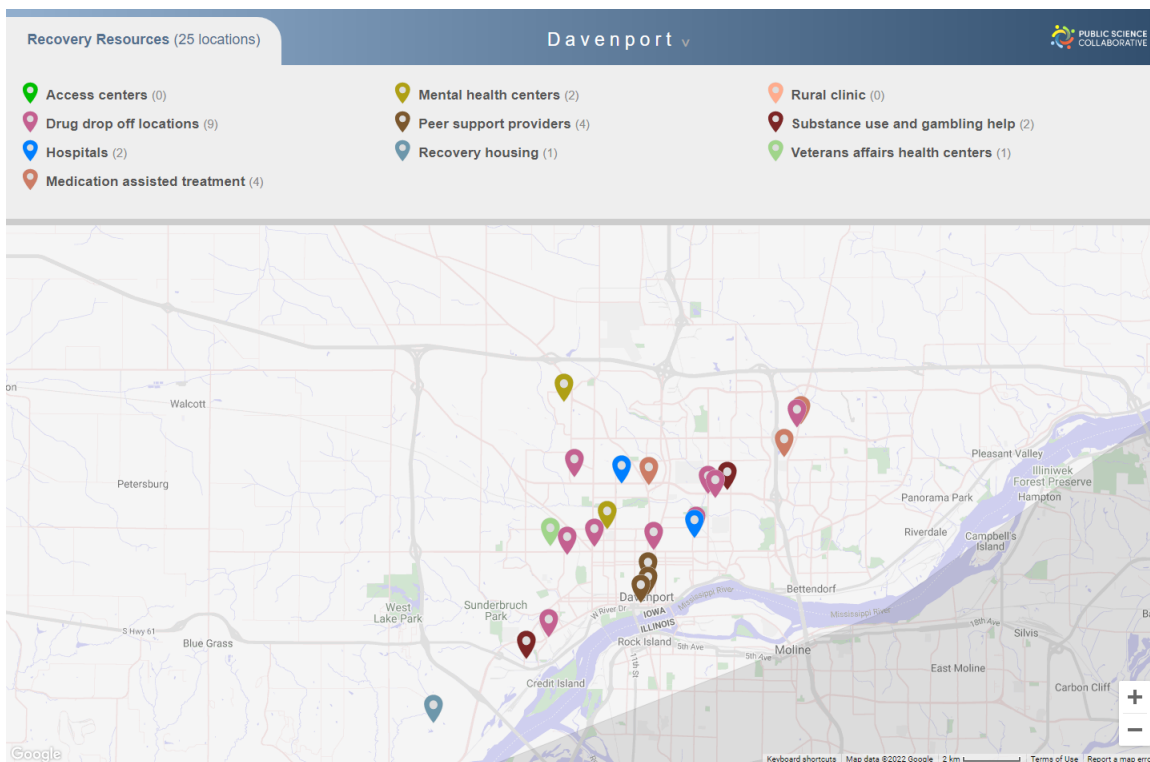
## What Recovery Resources Are Available in Your Area?

---

Despite their importance, community-based recovery resources can be hard to find. Whether a person is new to the community or a long-term resident, some resources remain unknown to many people in the community. The PSC Recovery Resource Locator aims to help solve this problem. Figure 3 is a screen capture of the PSC Recovery Resource Locator where you can see the location of some of the resources your community offers to its recovery community. A web version of this map is available at: <http://public-science.org/reportmaps/recoveryresources/?city=Davenport>. A full listing of these resources is provided as a table with resource name, type, and location in Appendix 3.

Davenport has 29 recovery resources available to support its residents in recovery from substance use disorders. These resources provide a variety of services and care to respond to the needs of individuals in the community. Drug drop off locations allow individuals to dispose of their unneeded prescription drugs to limit abuse of these substances. Medication assisted therapy helps alleviate withdrawal symptoms for individuals in recovery. Mental health resources are also an important resource in helping treat mental health challenges associated with SUD. Mutual aid and recovery housing groups are designed to provide a community of support to help address the material needs of people using substances. Finally, SUD treatment facilities and Veterans Affairs health clinics provide medical care to individuals using substances. These resources and others like them are tabulated in the top panel of Figure 3 to provide insight into strong and weak areas in community recovery resources.

**Fig. 3.** *Recovery Resources in Davenport*



---

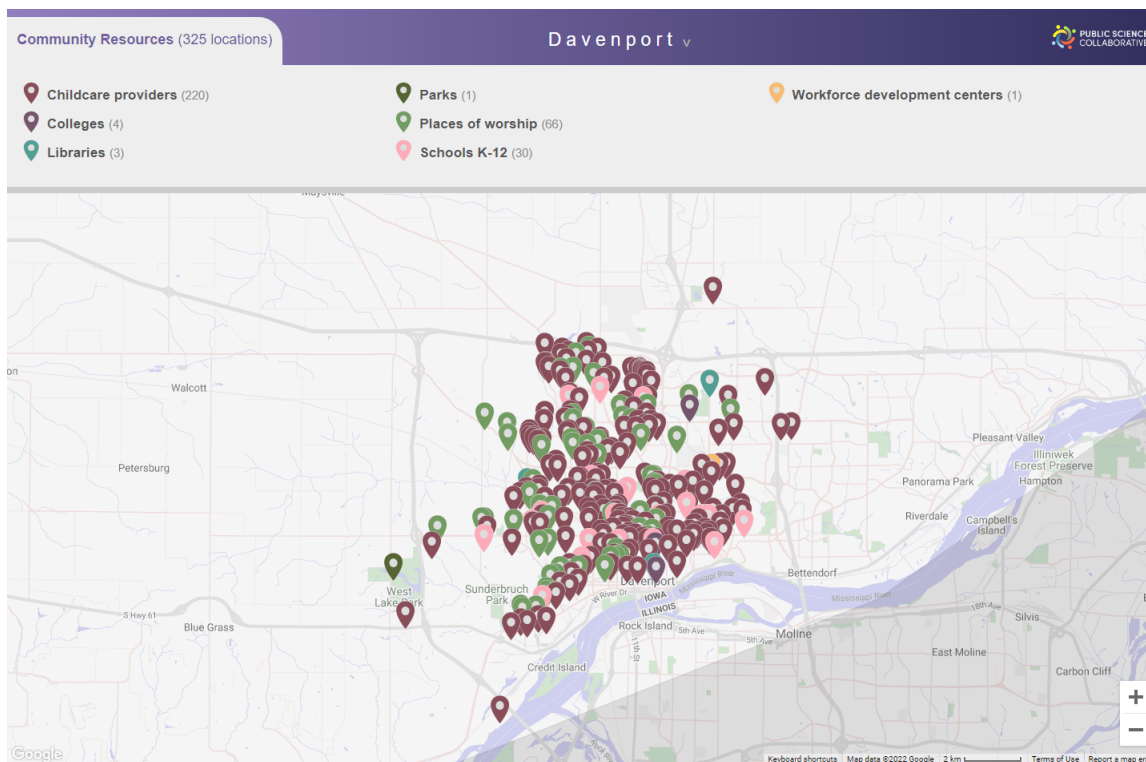
## What Community Resources Are Available in Your Area?

---

In addition to peer support meetings and clinical care, people in recovery benefit from other community resources. For example, having easy access to parks and natural areas has been shown to support substance use recovery. Participation in community groups, including religious organizations, may be a source of strength and support for many people in recovery. We have identified many additional community assets that can help people in their own recovery journey. The state of Iowa has a wide range of public and private institutions and organizations dedicated to providing health and human services, support, and activities to improve quality of life and well-being of all Iowans. The PSC Community Resource Locator is a utility for discovering many of these resources. Figure 4 is a screen capture of the PSC Community Resource Locator where you can see the location of some of the resources your community offers to its recovery community. A web version of this map is available at: <http://public-science.org/reportmaps/communityresources/?city=Davenport>. A full listing of these resources is provided as a table with resource name, type, and location in Appendix 4.

Davenport has 330 community resources available for its residents to live their best lives and to support those in recovery from substance use disorders. These may include childcare providers, universities and technical colleges, libraries, parks, places of worship, K-12 schools, and workforce development centers. The number of each type of resource is broken down in Figure 4., highlighting areas of success and areas for growth in your community.

**Fig. 4.** *Community Resources in Davenport*



---

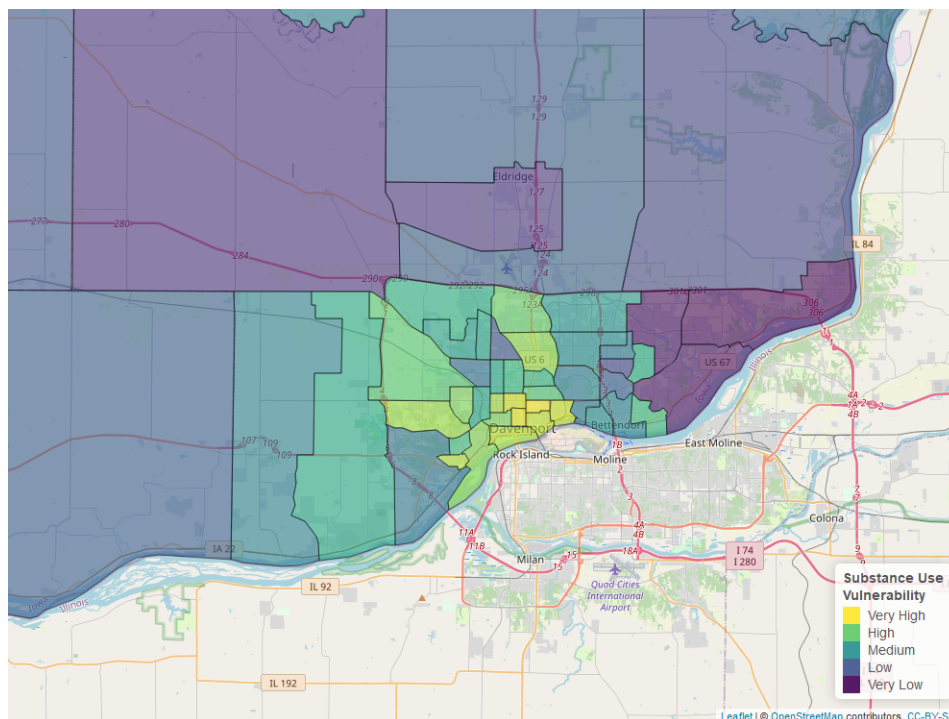
## Which Neighborhoods in Your Community Need Additional Health Resources and Support?

---

The Public Science Collaborative has developed data resources to help community organizations, local governments, and public health practitioners to more effectively target substance use prevention, treatment, and recovery interventions to the places in greatest need of resources. Geographic ‘hot spots’ identify places where local residents are at especially high risk for substance use disorder. We estimated statistical models using administrative data from the Treatment Episode Admissions Dataset (TEDS-A) and the National Survey of Drug Use and Health (NSDUH) to measure significant relationships between substances of misuse and socio-demographic characteristics known to affect health equity and substance use vulnerability. Neighborhood characteristics associated with each substance (e.g. methamphetamine, benzodiazepines) were overlaid with Census Bureau estimates of these same neighborhood characteristics, by census tract. Once mapped, these data help us to identify places with especially high concentrations of at-risk characteristics in need of targeted resources to reduce health inequities. You can learn more about the underlying models for this index in Appendix 1. The resulting maps are included in the pages that follow, and interactive maps can be found online at [https://publicsciencecollaborative.shinyapps.io/iowa\\_sdoh/](https://publicsciencecollaborative.shinyapps.io/iowa_sdoh/) and [https://publicsciencecollaborative.shinyapps.io/ia\\_substance\\_use\\_vulnerability/](https://publicsciencecollaborative.shinyapps.io/ia_substance_use_vulnerability/).

Towns and cities in Iowa typically have neighborhoods with distinctive risk profiles, with some at especially high (or low) risk of harmful use of a specific substance, such as Heroin, Opioids, or Methamphetamine. Identification of these locations can guide public health outreach efforts and enable more targeted, substance-specific interventions based upon known neighborhood risk factors. To do so, we have developed a city map to identify overall substance use vulnerability, which can be used to support generalized substance use prevention, treatment, and recovery interventions (Figure 5). Maps pertaining to Opioid, Heroin, and Methamphetamine use are included to help identify trends specific to these specific drugs (Figures 6, 7, 8). Typically, areas high in overall substance use vulnerability are also high in substance use. When this is the case, it suggests that general health resources would benefit these places and their residents. If a particular neighborhood is high in a specific substance, drug-specific interventions may be an effective tool in supporting the area.

**Fig. 5.** *Neighborhood Vulnerability Index, All Substance Use*

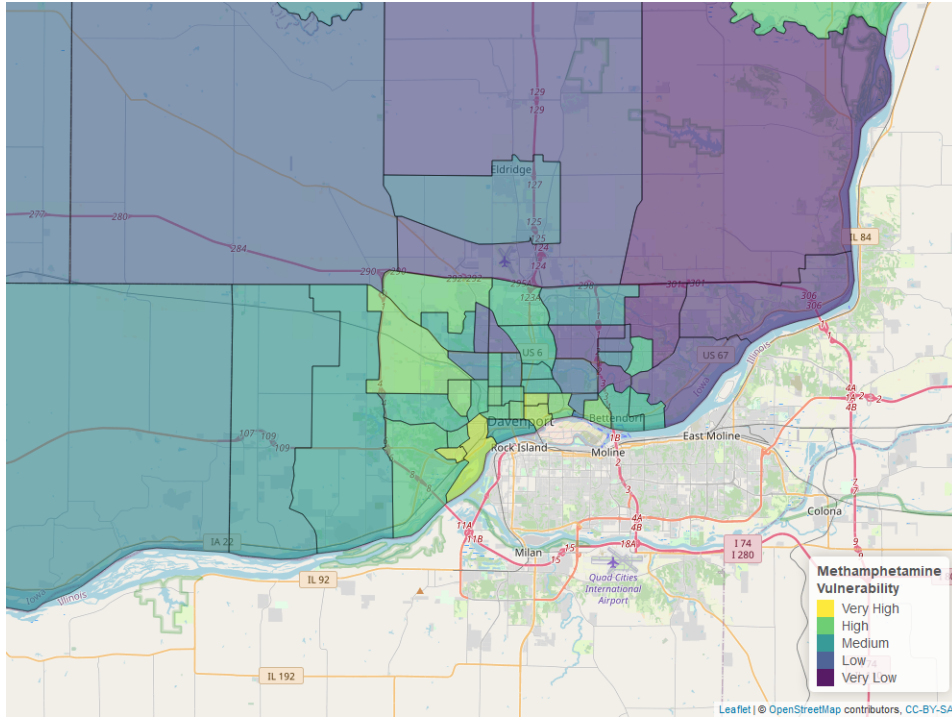


Overall substance use vulnerability varies by neighborhood in Davenport, but is generally higher than other communities in Iowa (see Figure 5). Due to neighborhood vulnerability, specific neighborhoods may benefit from a targeted approach rather than community wide efforts. Community-wide vulnerability was highest for heroin,





**Fig. 8.** *Neighborhood Vulnerability Index, Methamphetamine Use*



The overall meth risk in Davenport is about equal to the average for communities in Iowa (see Figure 8).

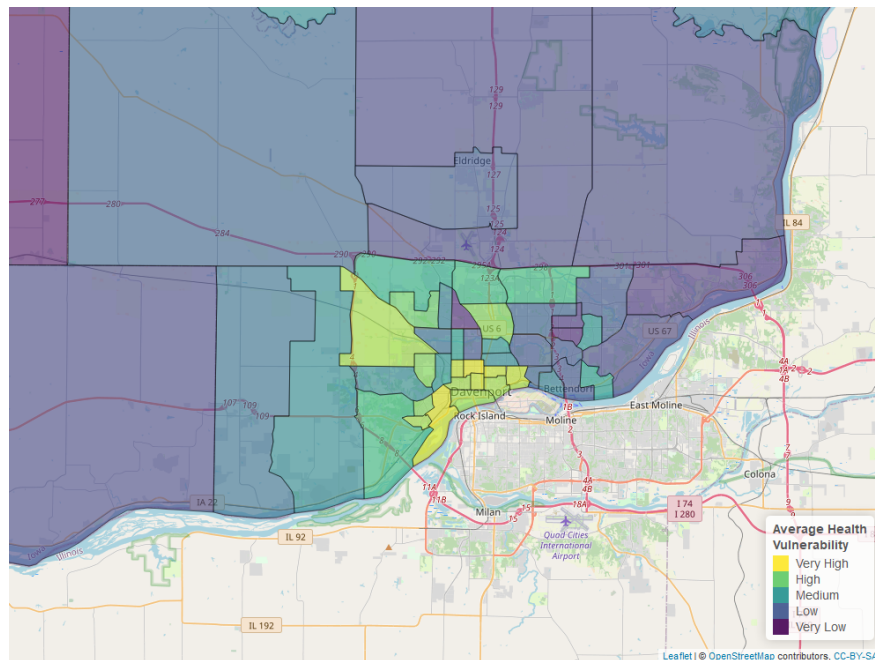
---

## What's Driving Health Disparities in Your Community?

---

In addition to the neighborhood vulnerability maps above, the Public Science Collaborative created a neighborhood map to understand health disparities in Davenport that draws on well-established social determinants of health. By social determinants, we refer to health risks that are social in origin and tend to be unevenly distributed within a city or town. For example, in places with high average levels of education and low unemployment rates, residents tend to also have better overall health (e.g. longer life span and more healthy years of living). In places where average incomes are low and the rates of single parenting are high, people often have worse health, including higher death rates due to overdose and fewer healthy days. Knowing something about where the social determinants of health support well being and where their scarcity decreases well being can help local community organizations and governments to better target investments to reduce health disparities between neighborhoods.

**Fig. 9.** *Neighborhood-Level Health Disparities, Social Determinants*



According to the social determinants we considered, lack of insurance is the biggest risk factor for poor health and between neighborhood health disparities in Davenport. Overall, health risks in Davenport are about equal to the average for communities in Iowa.

---

## APPENDIX 1: Data Used in this Report

---

### 10.1 Recovery Ready Community Index (RRCI)

Data Tool:	Recovery Ready Community Index
Data:	Data: PSC Meeting Finder Tool data; PSC Recovery Resources Locator Tool data; PSC Community Resources Tool data, U.S. Census Bureau American Community 5-year Estimates (ACS), 2015-2019

The Recovery Ready Community Index was designed to give a holistic view of a community’s “recovery readiness” and their ability to support people in recovery. The RRCI is constructed with four sub-measures: Breadth of Recovery Resources, Depth of Recovery Resources, Size of Recovery Culture, and Strength (Vibrancy) of Recovery Culture. You can read more about how the RRCI was developed on page two of this report. The specific recovery and community data collected to build the RRCI are detailed below and listed by name and source in Appendices 2, 3, and 4

### 10.2 PSC Meeting Finder Tool

Interactive Tool:	<a href="http://public-science.org/meetingfinder/">http://public-science.org/meetingfinder/</a>
Data updated daily:	<i>Adult Children of Alcoholics, Al-Anon/Alateen, Alcoholics Anonymous (AA), Buddhist recovery, Celebrate Recovery, CRUSH, Crystal Meth Anonymous, Dual Recovery Anonymous, Nar-Anon, Narcotics Anonymous (NA), Pill Anonymous, Refuge Recovery, and SMART Recovery</i>

Under the hood, the PSC Meeting Finder Tool is a data pipelining system that fetches the information of the 13 different types of recovery meetings from their original sources, and integrates them into a state map (Following Figure). This system is composed of four major logical components: (1) automated robots that oversee and ‘scrape’ the peer-support websites for daily updates, (2) database infrastructure, (3) the web server infrastructure, and (4) PSC Meeting Finder web-based application. There are two types of automated program robots, called ‘bots’, utilized in this system: commander bots and scraper bots. The commander bot is in charge of running and logging the scraper bots, and reports to the system administrator when a scraper bot is unsuccessful. A scraper bot is in charge of scrapping the original listing websites, and populating the database with the cleaned data. The original listings might be unstructured and contain dirty data. It is the scraper bot’s duty to make sure that the data that is inserted into the database is clean and structured. These data are then pulled into the users’ browser by the PSC Meeting Finder Tool.

**Table 1.** Peer Support Meeting Information for Davenport

Name of Meeting	Web Resource	# of locations	# of meetings per week
Adult Children of Alcoholics	<a href="https://adultchildren.org/">https://adultchildren.org/</a>	3	3
Al-Anon/Alateen	<a href="https://al-anon.org">https://al-anon.org</a>	12	6
Alcoholics Anonymous	<a href="https://www.aa-iowa.org/">https://www.aa-iowa.org/</a>	141	23
Dual Recovery Anonymous	<a href="http://draonline.qwknetllc.com/">http://draonline.qwknetllc.com/</a>	2	2
SMART Recovery	<a href="https://www.smartrecoverytest.org/">https://www.smartrecoverytest.org/</a>	2	2

Recovery meetings data are gathered and cleaned from 13 web-based resources via our data pipeline system. Most of these resources utilize web scraping techniques (in Python by standard requests or packages such as Selenium and BeautifulSoup packages) as well as parsing PDF (Python: PyPDF2 package) files and XLS sheets (Python: csvkit). Table 1 identifies the name of the meeting, web resource, number of locations, and number of meetings per week.

Fig. 10. PSC Meeting Finder Tool - Under the Hood



### 10.3 PSC Resource Recovery Tool

Interactive Tool:

<http://public-science.org/recoveryresources>

Data updated yearly:

*Iowa Office of Drug Control Policy; Wikipedia of Iowa hospitals; Iowa Department of Public Health; Recovery and Resilience Coordinator with AmeriCorpAllTreatment.com; TransitionalHousing.org; WomenSoberHousing.com; Addicted.org; Recovery.org; Drug-rehabs.org; Iowa Association of Rural Health Clinics; U.S. Department of Veterans Affairs*

Recovery resources include access centers, drug drop off locations, hospitals, medication assisted treatment locations, mental health centers, peer support providers, recovery housing, rural clinics, SUD and problem gambling treatment locations, and Veterans Affairs health centers. To collect this data, we used a variety of public resources, including government agencies and recovery websites. Our collection of recovery resources is not necessarily exhaustive, but represents the data accessed through our initial effort and following the advice of substance use experts and researchers. This data was acquired through a variety of means, including simple downloads, manual data entry, computer reading of PDF files, and scraping websites. See the table below for the recovery resources data sources.

**Table 2.** *Recovery Resource Locator Tool Data Sources (Downloaded Sept 2020-May 2021)*

Resource	Data Source	Website Link
Access Centers	Manual Addition	
Drug Drop Off Locations	Iowa Office of Drug Control Policy	<a href="https://geodata.iowa.gov/datasets/rx-drop-off-locations-1?geometry=-101.674%2C40.504%2C-84.986%2C43.364">https://geodata.iowa.gov/datasets/rx-drop-off-locations-1?geometry=-101.674%2C40.504%2C-84.986%2C43.364</a>
Hospitals	Wikipedia list of Iowa hospitals	<a href="https://en.wikipedia.org/wiki/List_of_hospitals_in_Iowa">https://en.wikipedia.org/wiki/List_of_hospitals_in_Iowa</a>
Medication Assisted Treatment Locations	Iowa Department of Public Health	<a href="https://idph.iowa.gov/mat">https://idph.iowa.gov/mat</a>
Mental Health Centers	Iowa Department of Public Health	<a href="https://dhs.iowa.gov/sites/default/files/MHDDAccreditedProviders_32.pdf?082320201508">https://dhs.iowa.gov/sites/default/files/MHDDAccreditedProviders_32.pdf?082320201508</a>
Recovery Housing	AllTreatment.com; TransitionalHousing.org; WomenSoberHousing.com; Addicted.org; Recovery.org; Drug-rehabs.org	<a href="https://AllTreatment.com;TransitionalHousing.org;WomenSoberHousing.com;Addicted.org;Recovery.org;Drug-rehabs.org">AllTreatment.com;TransitionalHousing.org;WomenSoberHousing.com;Addicted.org;Recovery.org;Drug-rehabs.org</a>
Rural Clinics	Iowa Association of Rural Health Clinics	<a href="https://iarhc.org/find-a-rural-health-clinic?view=map">https://iarhc.org/find-a-rural-health-clinic?view=map</a>
SUD and Problem Gambling Treatment Locations	Iowa Department of Public Health	<a href="https://idph.iowa.gov/Portals/1/userfiles/166/Licensure/All%20Licensed%20Substance%20Use%20Disorder%20-%20Problem%20Gambling%20Program%27s%20List.pdf">https://idph.iowa.gov/Portals/1/userfiles/166/Licensure/All%20Licensed%20Substance%20Use%20Disorder%20-%20Problem%20Gambling%20Program%27s%20List.pdf</a>
Veterans Affairs Health Centers	U.S. Department of Veterans Affairs	<a href="https://www.va.gov/directory/guide/state.asp?STATE=IA&amp;dnum=ALL">https://www.va.gov/directory/guide/state.asp?STATE=IA&amp;dnum=ALL</a>

## 10.4 PSC Community Resource Locator Tool

Interactive Tool:

<http://public-science.org/communityresources>

Data updated yearly:

*Iowa Department of Human Services; Wikipedia of Iowa colleges; Institute of Museum and Library Services, Public Libraries Survey; MyCountyParks.com; USGS Geographic Names Information System; Iowa Dept of Education; Iowa Workforce Development*

Community resources include childcare providers, colleges, libraries, parks, places of worship, K-12 schools, and workforce development centers. To collect this data, we used a variety of public resources, including government agencies and recovery websites. Our collection of community resources is not necessarily exhaustive, but represents the data accessed following the advice of substance use experts and researchers. This data was acquired through a variety of means, including simple downloads, manual data entry, computer reading of PDF files, and scraping websites. See the table below for the community resources data sources.

**Table 3.** *Community Resource Locator Tool Data Sources (Downloaded Sept 2020-April 2021)*

Resource	Data Source	Website Link
Childcare Providers	Iowa Department of Human Services	<a href="http://ccmis.dhs.state.ia.us/ClientPortal/ProviderLocator.aspx">http://ccmis.dhs.state.ia.us/ClientPortal/ProviderLocator.aspx</a>
Colleges	Wikipedia list of Iowa colleges	<a href="https://en.wikipedia.org/wiki/List_of_colleges_and_universities_in_Iowa">https://en.wikipedia.org/wiki/List_of_colleges_and_universities_in_Iowa</a>
Public Libraries	Institute of Museum and Library Services	<a href="https://www.imls.gov/research-evaluation/data-collection/public-libraries-survey">https://www.imls.gov/research-evaluation/data-collection/public-libraries-survey</a>
Parks	MyCountyParks.com	<a href="https://www.mycountyparks.com/County/Default.aspx">https://www.mycountyparks.com/County/Default.aspx</a>
Places of Worship	USGS Geographic Names Information System	<a href="https://data.iowa.gov/Physical-Geography/Iowa-Church-Buildings/juvk-dad9">https://data.iowa.gov/Physical-Geography/Iowa-Church-Buildings/juvk-dad9</a>
K-12 Schools	Iowa Department of Education	Public Schools: <a href="https://educateiowa.gov/documents/directories/2020/09/2020-21-iowa-public-school-building-directory">https://educateiowa.gov/documents/directories/2020/09/2020-21-iowa-public-school-building-directory</a>
		Private Schools: <a href="https://educateiowa.gov/documents/directories/2020/09/2020-21-iowa-non-public-school-building-directory">https://educateiowa.gov/documents/directories/2020/09/2020-21-iowa-non-public-school-building-directory</a>
Workforce Development Centers	Iowa Workforce Development	<a href="https://www.iowaworkforcedevelopment.gov/contact">https://www.iowaworkforcedevelopment.gov/contact</a>

## 10.5 Substance Use Vulnerability Index

Data Tool:

Substance Use Vulnerability Index

Data:

*Treatment Episode Data Set-Admission and Discharge (TEDS), 2000-2018 National Survey on Drug Use and Health data (NSDUH), 2015-2019 U.S. Census Bureau American Community 5-year Estimates (ACS), 2015-2019*

Geographic ‘hot spots’ of people at risk for substance use disorder were first predicted based on models of administrative data from Treatment Episode Data on admissions (TEDS) and the National Survey of Drug Use and Health (NSDUH) data that assessed significant relationships between key substances and socio-demographic characteristics known to affect health equity and substance use vulnerability (Tables 5-6 results below). Then, the significant predictions of risk for each substance were overlaid with Census Bureau’s American Community Survey 5-year estimates of these population characteristics to provide a visual representation of places with especially high concentrations of people with at-risk characteristics. The Census characteristics described in Table 4 below are reported in Figures 5-8

**Table 4.** *Substance Use Risk Index using U.S. Census Bureau American Community 5-year Estimates (2015-2019)*

Risk Characteristics	Census Table	Description
Age	B06001	Data table includes population by age categories.
Sex	B01001	Data table includes population by sex.
Poverty Status	S1701_C01	Data table includes poverty status by age bracket and for different income levels.
Marital Status	B12001	Data table includes marital status by sex.
Parental Status	B09002	Data table includes parental and childcare status.

**Table 5.** *Substance Use Risk Index using TEDS Admission Data*

Risk Characteristics	Alcohol	Cannabis	Meth	Cocaine	Other Opiates	Heroin	Benzos
Age	Older, >35	Young, <35, <25	Middle age	>45	<25	Spikes at both ends	<25
Sex	Male	Male	Female			Male	Female
Race	Black, Hispanic	Black	White	Non-white	Asian, white	Non-white	White
Education		No college	No college	Some college	Some college	Some college	Some college
Poverty	Public Assistance	Public Assistance		Retired/Disabled	Wages/Salary, Retired/Disabled	Wages/Salary, Retired/Disabled	
Employment	Employed	Part time	Unemployed	Employed	Unemployed		Part time
Marital Status			Separated, Divorced, Widowed	Single	Married	Single	
Pop Density	Rural, Micro	Rural, Micro	Micro	Metro	Metro	Metro	Metro, Micro



**Table 6.** *Substance Use Risk Index using NSDUH Data*

<b>Risk Characteristics</b>	<b>Alcohol</b>	<b>Cannabis</b>	<b>Meth</b>	<b>Cocaine</b>	<b>Other Opiates</b>	<b>Heroin</b>	<b>Benzos</b>
Age	26-34	Young, <35, <25	Middle age	18-34	<50	26-49	18-34
Sex	Male	Male	Male	Male	Male	Male	Male
Race	White	White, Native American	White, Native American	White, Native American	White, Native American	White	White
Education	College	Some college, maybe	No college		No college	No college	
Income	>75,000	<20,000	<40,000	<20,000	<40,000	<20,000	
Employment	Employed	Unemployed	Unemployed	Unemployed	Unemployed	Unemployed	Unemployed
Marital Status	Single, separated	Single	Separated, Divorced	Single	Single	Single	Single
Pop Density	Metro	Metro	Non-metro	Metro	Metro	Metro	Metro

## 10.6 Social Determinants of Health Index

Data: Social Determinants of Health Index

Data: *U.S. Census Bureau American Community 5-year Estimates (ACS), 2015-2019*

The Social Determinants of Health Index was developed to promote health equity through providing a better understanding of the environments that create and ameliorate the multifactorial risk factors of substance misuse on priority populations. All data for the Substance Use Vulnerability Index comes from the U.S. Census Bureau American Community Survey 5-year estimates (2015-2019). The 5-year pooled dataset represents 60 months of data that enable more precise multi-year estimates. Because many of Iowa’s counties have relatively small populations, the 5-year set of pooled data is the only type of ACS estimates that are available to use across all 99 counties. Following the standards set by *Washington State’s Social Determinants of Health Website* ([www.doh.wa.gov/DataandStatisticalReports/HealthDataVisualization/SocialDeterminantsofHealthDashboards/CensusTractSocialDeterminantsofHealth](http://www.doh.wa.gov/DataandStatisticalReports/HealthDataVisualization/SocialDeterminantsofHealthDashboards/CensusTractSocialDeterminantsofHealth)), PSC collected information on the educational attainment level, health insurance coverage, English proficiency, unemployment, and poverty status in each county and then used this information to calculate the average health index for each of Iowa’s 99 counties

**Table 7.** *Substance Use Risk Index using U.S. Census Bureau American Community 5-year Estimates (2015-2019)*

Risk Characteristics	Census Table	Description
Educational Attainment	S1501	Data table includes educational attainment level for population 25+, by sex.
Health Insurance Coverage	S2701_C05_001	Variable is percent of civilian noninstitutionalized population that is uninsured.
English Proficiency	S1601_C06_001	Variable is percent of population 5+ that speaks English less than very well.
Unemployment, 16+	S2301_C04_001	Variable is percent of population 16+ that is in the labor force, but is unemployed.
Poverty Status	S1701_C01	Data table includes poverty status by age bracket and for different income levels.

The Social Determinants of Health Index was developed to promote health equity through providing a better understanding of the environments that create and ameliorate the multifactorial risk factors of substance misuse on priority populations. All data for the Substance Use Vulnerability Index comes from the U.S. Census Bureau American Community Survey 5-year estimates (2015-2019). The 5-year pooled dataset represents 60 months of data that enable more precise multi-year estimates. Because many of Iowa’s counties have relatively small populations, the 5-year set of pooled data is the only type of ACS estimates that are available to use across all 99 counties. Following the standards set by *Washington State’s Social Determinants of Health Website* ([www.doh.wa.gov/DataandStatisticalReports/HealthDataVisualization/SocialDeterminantsofHealthDashboards/CensusTractSocialDeterminantsofHealth](http://www.doh.wa.gov/DataandStatisticalReports/HealthDataVisualization/SocialDeterminantsofHealthDashboards/CensusTractSocialDeterminantsofHealth)), PSC collected information on the educational attainment level, health insurance coverage, English proficiency, unemployment, and poverty status in each county and then used this information to calculate the average health index for each of Iowa’s 99 counties

## Appendix 2: Peer Support Contacts in Your Area

Table 8. Appedix 2

Type	Name	Meetings per Week	Meeting Location
AA	Blandine Group	8	117 N Perry St, Davenport, IA 52801, USA
AA	Central Discussion Group	22	1706 Brady St 105, Davenport, IA 52803, USA
AA	Courage To Change Group	1	1401 N Perry St, Davenport, IA 52803, USA
AA	Freedom Group	1	117 N Perry St, Davenport, IA 52801, USA
AA	Grupo La Nueva Vida	6	322 E 3rd St, Davenport, IA 52801, USA
AA	Marquette Group	1	3510 W Central Park Ave, Davenport, IA 52804, USA
AA	Marquette Group	10	6509 Northwest Blvd, Davenport, IA 52806, USA
AA	Northwest Group	1	6509 Northwest Blvd, Davenport, IA 52806, USA
AA	Sisters In Sobriety Group	1	2930 E Locust St, Davenport, IA 52803, USA
AA	Three Legacies Group	1	1706 Brady St 105, Davenport, IA 52803, USA
AA	Three Legacies Group Online Only	1	1706 Brady St 105, Davenport, IA 52803, USA
AA	West End A.A. Group	16	2603 Rockingham Rd, Davenport, IA 52802, USA
	Promise	3	2603 Rockingham Rd, Davenport, IA 52802, USA
	Road to Recovery	2	2651 Telegraph Rd, Davenport, IA 52804, USA
	We Do Recover	4	117 Perry St, Davenport, IA 52801, USA
ACA	Saturday Morning ACA IA033	1	3420 Jersey Ridge Rd, Davenport, IA 52807, USA
AlAnon	Cal Book Study AFG	1	3420 Jersey Ridge Rd, Davenport, IA 52807, USA
AlAnon	Central Discussion AFG	4	1706 Brady St Ste 105, Davenport, IA 52803, USA
AlAnon	Steps To Serenity AFG	1	3420 Jersey Ridge Rd, Davenport, IA 52807, USA
SMART		1	2320 Farnam St, Davenport, IA 52803, USA

## Appendix 3: Recovery Resources in Your Area

Table 9. Davenport Recovery Resource Type, Name of Business, and Address of Business

Resource	Name	Address
Drug Drop Off Location	Genesis First Med Pharmacy	1227 E. Rusholme St., Davenport, Iowa 52803
Drug Drop Off Location	Hy-Vee Pharmacy	4064 E 53rd St, Davenport, Iowa 52807
Drug Drop Off Location	Hy-Vee Pharmacy	2200 W Kimberly Rd, Davenport, Iowa 52806

Drug Drop Off Location	Hy-Vee Pharmacy #1 (1105)	3019 Rockingham Road, Davenport, Iowa 52802
Drug Drop Off Location	Hy-Vee Pharmacy #3 (1107)	1823 East Kimberly, Davenport, Iowa 52807
Drug Drop Off Location	Hy-Vee Pharmacy #5 (1109)	2351 W. Locust, Davenport, Iowa 52804
Drug Drop Off Location	Main at Locust Pharmacy	129 W. Locust, Davenport, Iowa 52803
Drug Drop Off Location	Walgreens	1660 W Locust Street, Davenport, Iowa 52804
Drug Drop Off Location	Walgreens	1525 E Kimberly Road, Davenport, Iowa 52807
Hospital	Genesis Medical Center-Davenport	1227 E Rusholme St, Davenport, IA 52803
Hospital	Select Specialty Hospital-Quad Cities	1111 W Kimberly Rd, Davenport, IA 52806
Medication Assisted Treatment	Center for Alcohol and Drug Services	1523 S. Fairmont St., Davenport, IA 52802
Medication Assisted Treatment	Center for Behavioral Health Iowa, Inc.	3811 North Harrison Street, Davenport, IA 52806
Medication Assisted Treatment	Trinity Enrichment Center - Dr. Joseph Bertroche D.O.	4622 Progress Drive, Davenport, IA 52807
Medication Assisted Treatment	Pain Centers of Iowa - Dr. John Dooley M.D.	5515 Utica Ridge Road, Davenport, IA 52807
Mental Health Center	Community Centered Counseling Services, LLC	2711 W. 63rd, Davenport, IA
Mental Health Center	Vera French CMHC	1441 West Central Park Avenue, Davenport, IA
Peer Support Provider	Family Resources - Integrated Health Home	2800 Eastern Avenue, Davenport, IA
Peer Support Provider	Robert Young - Integrated Health Home	500 W. River Drive, Davenport, IA
Peer Support Provider	Vera French Mental Health - ACT Team	808 North Harrison Street, Davenport, IA
Peer Support Provider	Vera French Mental Health - Carol Center	808 North Harrison Street, Davenport, IA
Peer Support Provider	Vera French Mental Health - Integrated Health Home	1441 W. Central Park Avenue, Davenport, IA
Recovery Housing	Center for Alcohol and Drug Services Country Oaks	12160 Utah Ave, Davenport, IA
Recovery Housing	OneEighty	601 N Marquette St., Davenport, IA
Recovery Housing	Quad Cities Sober Living	104 E Central Park Ave., Davenport, IA
Recovery Housing	Unity House of Davenport	808 W 8th St #806, Davenport, IA
SUD and Problem Gambling Treatment Location	Center for Alcohol and Drug Services, Inc. (CADS)	1523 South Fairmount, Po Box 3278 Davenport, 52802-3278
SUD and Problem Gambling Treatment Location	Rosecrance New Life Outpatient	2322 E. Kimberly Road Paul Revere Square, Suite 200 North Davenport, 52807
VA Health Center	Quad Cities VA Clinic	2826 West Locust Street, Suite A, Davenport, IA 52804

## Appendix 4: Community Resources in Your Area

**Table 10.** Davenport Community Resource Type, Name of Business, and Address of Business

Resource	Name	Address
Childcare Provider	ABC Daycare	2625 E Lombard St, Davenport, IA 52803
Childcare Provider	Achieving A Bright Start Day-care	2623 W Central Park Ave, Davenport, IA 52804
Childcare Provider	Elizabeth Davis	2443 W 60th Pl, Davenport, IA 52806
Childcare Provider	Elizabeth Dvorak	6510 Silver Creek Dr, Davenport, IA 52806
Childcare Provider	Emma Thomas	1205 W 17th St, Davenport, IA 52804
Childcare Provider	Erica Gray	2706 W 66th St, Davenport, IA 52806
Childcare Provider	Esperanza Cobos	409 E 15th St Apt 2, Davenport, IA 52803
Childcare Provider	Evelyn Sweatt	3120 Orchard Ave, Davenport, IA 52802
Childcare Provider	Fillmore Elementary Stepping Stones	7307 Pacific St, Davenport, IA 52806
Childcare Provider	Fleurette E Smith	5414 Kelling St, Davenport, IA 52806
Childcare Provider	Friendly House Kids Corner	1221 Myrtle St, Davenport, IA 52804
Childcare Provider	Garfield Elementary Stepping Stones	902 E 29th St, Davenport, IA 52803
Childcare Provider	Geneva Parker-Wild	3417 W 42nd St, Davenport, IA 52806
Childcare Provider	Gold Coast Home Daycare	925 W 7th St, Davenport, IA 52802
Childcare Provider	Gregory Zirbes	11325 140th St Lot 58, Davenport, IA 52804
Childcare Provider	Guadalupe Izaguirre	1546 W 14th St, Davenport, IA 52804
Childcare Provider	Harrison Elementary Stepping Stones	1032 W 53rd St, Davenport, IA 52806
Childcare Provider	Heather Olson	2348 W 49th St, Davenport, IA 52806
Childcare Provider	Heather Walker	1710 Warren St, Davenport, IA 52804
Childcare Provider	Nancy Howland	1406 Meadowview Ln, Davenport, IA 52806
Childcare Provider	Odessia Kinney	1343 Clay St, Davenport, IA 52804
Childcare Provider	Pam Kimmel	4823 Oakwood Dr Lot 79, Davenport, IA 52806
Childcare Provider	Pamela Henderson	928 W 15th St, Davenport, IA 52804
Childcare Provider	Pamela Seales	3504 W 42nd St Apt 98, Davenport, IA 52806
Childcare Provider	Patricia Gunter-Murphy	1338 Christie St, Davenport, IA 52803
Childcare Provider	Patricia Terrell	1518 W 10th St, Davenport, IA 52804
Childcare Provider	Paty Martinez	2701 1/2 Bridge Ave, Davenport, IA 52803
Childcare Provider	Playtime Academy	2024 Dixwell St, Davenport, IA 52802
Childcare Provider	Positive Parenting At Trinity	121 West 12th Street, Davenport, IA 52803
Childcare Provider	Quad City Montessori School	2400 E 46th St, Davenport, IA 52807
Childcare Provider	Adams Elementary Stepping Stones	3029 Division St, Davenport, IA 52804
Childcare Provider	Alexis Olsen	1010 W 15th St, Davenport, IA 52804
Childcare Provider	All Saints Catholic School Before and After Care	1926 Marquette St, Davenport, IA 52804
Childcare Provider	Althea Kelley	1122 Scott St, Davenport, IA 52803
Childcare Provider	Andrea Patrick	3932 N Elsie, Davenport, IA 52806
Childcare Provider	Angel Rias	724 W 48th St, Davenport, IA 52806
Childcare Provider	Angela Dothard	1909 W 70th St, Davenport, IA 52806
Childcare Provider	Angela Glover	3623 W 43rd St Apt 55, Davenport, IA 52806
Childcare Provider	Angela Larson	1506 W Columbia Ave, Davenport, IA 52804
Childcare Provider	Angela Terronez	4412 N Hancock Ave, Davenport, IA 52806

Childcare Provider	Angelique Abbey-Lewis	1513 W 13th St, Davenport, IA 52804
Childcare Provider	Anita McDowell	1711 College Ave, Davenport, IA 52803
Childcare Provider	Annette Thompson	2026 1/2 W 6th St, Davenport, IA 52802
Childcare Provider	Annie Apgar	2406 N Clark St, Davenport, IA 52804
Childcare Provider	Holy Family Teddy Bear Club	1341 W Pleasant St, Davenport, IA 52804
Childcare Provider	Jackson Elementary Stepping Stones	1307 Wisconsin Ave, Davenport, IA 52804
Childcare Provider	James Ellis	1312 Eastern Ave, Davenport, IA 52803
Childcare Provider	Jchemela Jackson	735 W 17th St, Davenport, IA 52804
Childcare Provider	Jefferson Elementary Stepping Stones	1027 N Marquette, Davenport, IA 52804
Childcare Provider	Jenni Corson	2661 Harrison St, Davenport, IA 52803
Childcare Provider	Jennifer Dohrmann	917 Franklin Ave, Davenport, IA 52806
Childcare Provider	Jennifer Franzen	4011 Bedford Pl, Davenport, IA 52806
Childcare Provider	Jessica Elliott	1906 W 3rd St, Davenport, IA 52802
Childcare Provider	Jessica Nesbitt and Blair Wynn	3831 Sunnyside Ave, Davenport, IA 52802
Childcare Provider	JFK Child Care Services at JFK Catholic School	1627 W 42nd St, Davenport, IA 52806
Childcare Provider	Rebecca Murphey	4617 Scott St, Davenport, IA 52806
Childcare Provider	Red Rover Children's Learning Center	3445 Spring Street, Davenport, IA 52807
Childcare Provider	Renae McGee	4464 Spring St, Davenport, IA 52807
Childcare Provider	Rikki Meyers	4122 S Concord St, Davenport, IA 52802
Childcare Provider	Risen Christ Little Blessings Day Care	6021 Northwest Blvd, Davenport, IA 52806
Childcare Provider	Robert Mendoza	2650 Dubuque St, Davenport, IA 52803
Childcare Provider	Robia Myers	2714 N Fairmount St, Davenport, IA 52804
Childcare Provider	Ronique Thomas	681 W 64th St, Davenport, IA 52806
Childcare Provider	Ruth Martinez	1729 Wilkes Ave, Davenport, IA 52804
Childcare Provider	Sara Bebout	1827 W 66th St, Davenport, IA 52806
Childcare Provider	Sarah Reid	2653 Davie St, Davenport, IA 52803
Childcare Provider	Sarah Taylor	503 E 14th St, Davenport, IA 52803
Childcare Provider	Satin Murphy	921 W 3rd St Apt 2, Davenport, IA 52802
Childcare Provider	Savanna Bragg	334 S Elmwood Ave, Davenport, IA 52802
Childcare Provider	SCFY Davenport Early Learning Center	624 E 4th St, Davenport, IA 52801
Childcare Provider	SCFY Davenport Kids Club	606 W 2nd St, Davenport, IA 52801
Childcare Provider	SCFY Newcomb Early Learning Center	2619 N Division St, Davenport, IA 52804
Childcare Provider	SCFY North	624 W 53rd St, Davenport, IA 52806
Childcare Provider	SCFY Palmer Learning Center	724 N Harrison St, Davenport, IA 52803
Childcare Provider	SCFY West	3503 W Locust St, Davenport, IA 52804
Childcare Provider	Shanita Williams	2802 Leclair St, Davenport, IA 52803
Childcare Provider	Shannon Ramirez	428 S Lincoln Ave, Davenport, IA 52802
Childcare Provider	Sharna Hawkins	1616 W 42nd St Apt 14, Davenport, IA 52806
Childcare Provider	Shayla McCellan	1134 E 29th St, Davenport, IA 52803
Childcare Provider	Autumn Miles	3242 W 63rd St, Davenport, IA 52806
Childcare Provider	Avishia Hodges	623 W 64th St, Davenport, IA 52806
Childcare Provider	Barbara Carter	1306 Brown St, Davenport, IA 52804
Childcare Provider	Beverly Woods and Breyana Woods	1914 N Clark St, Davenport, IA 52804
Childcare Provider	Birdie's Nest Child Care Center	2627 Hickory Grove Rd, Davenport, IA 52804
Childcare Provider	Bradley Payne	1505 Kirkwood Blvd, Davenport, IA 52803
Childcare Provider	Brenda Simmonds	2121 W 30th, Davenport, IA 52804

Childcare Provider	Brenda VanCamp	2 Calvin Ct, Davenport, IA 52804
Childcare Provider	Bridget Welge	2618 W 62nd St, Davenport, IA 52806
Childcare Provider	Bridgette Tate	2649 N Fillmore St, Davenport, IA 52804
Childcare Provider	Brittany Rogers	1428 E 35th St, Davenport, IA 52807
Childcare Provider	Buchanan Elementary Stepping Stones	4515 N Fairmount Street, Davenport, IA 52806
Childcare Provider	CAEI Family Enrichment Center Head Start	300 W 59th St, Davenport, IA 52806
Childcare Provider	CAEI-Fairmount Pines HS and EHS	4205 N Fairmount St, Davenport, IA 52806
Childcare Provider	CAEI-Mid City Early Head Start	3801 Marquette St, Davenport, IA 52806
Childcare Provider	CAEI-Roosevelt Head Start	1220 Minnie Ave, Davenport, IA 52802
Childcare Provider	CAEI-Wittenmyer Head Start and Early Head Start	2800 Eastern Ave Bldgs Dandl, Davenport, IA 52803
Childcare Provider	Calesha Jackson	412 E 9th St, Davenport, IA 52804
Childcare Provider	Callie Warren	2510 N Division St, Davenport, IA 52804
Childcare Provider	Jill Jay	6431 Sturdevant St, Davenport, IA 52806
Childcare Provider	Juanice LaGrone-Freeman	220 E Rusholme St, Davenport, IA 52803
Childcare Provider	Juanita Span	4108 N Elsie Ave, Davenport, IA 52806
Childcare Provider	Justin Blackwood	1302 Warren St, Davenport, IA 52804
Childcare Provider	Kaitlyn Bell	4725 N Harrison St, Davenport, IA 52806
Childcare Provider	Karen Pillard	1208 W Lombard St, Davenport, IA 52804
Childcare Provider	Karla Olsen	306 W 46th St, Davenport, IA 52806
Childcare Provider	Kayatana White	1527 Bridge Ave, Davenport, IA 52803
Childcare Provider	Kayla Ellis	4137 Regency Ct, Davenport, IA 52806
Childcare Provider	Kelly Hammer	1322 W Central Park Ave, Davenport, IA 52804
Childcare Provider	Keonica Hearn	3407 Hillendale Rd Unit H, Davenport, IA 52806
Childcare Provider	Keyla Miles	1628 W George Washington Blvd, Davenport, IA 52804
Childcare Provider	Sherry Brix	18315 240th St, Davenport, IA 52807
Childcare Provider	Shining Light Learning Center	5074 N Pine St, Davenport, IA 52806
Childcare Provider	Shirley Evans	2737 W 35th St, Davenport, IA 52806
Childcare Provider	Shirley Merritt	1333 Carey Ave, Davenport, IA 52803
Childcare Provider	Shirley Rothweiler	6815 W 11th St, Davenport, IA 52804
Childcare Provider	Shydia Banister	1921 Lillie Ave, Davenport, IA 52804
Childcare Provider	Skip-A-Long Child Development Services	3520 Crow Creek Rd, Davenport, IA 52807
Childcare Provider	Small Wonders Childcare, LLC	816 W 59th St, Davenport, IA 52806
Childcare Provider	St Alphonsus Early Childhood Education Center	2626 Boies Ave, Davenport, IA 52802
Childcare Provider	St Ambrose Univ Children's Campus	1301 W Lombard St, Davenport, IA 52804
Childcare Provider	St Mark Preschool	2363 W 3rd St, Davenport, IA 52802
Childcare Provider	St Paul Lutheran Church Preschool	2136 Brady St, Davenport, IA 52803
Childcare Provider	St Paul The Apostle Catholic School Childcare	1023 E Rusholme St, Davenport, IA 52803
Childcare Provider	Stasha Prins	3710 Pacific St, Davenport, IA 52806
Childcare Provider	Stephanie Hubbard	1551 W Lombard St, Davenport, IA 52804
Childcare Provider	Stepping Stones @ DLC	1002 W Kimberly Rd, Davenport, IA 52806
Childcare Provider	Suzanne Appleby	2323 W 45th St, Davenport, IA 52806
Childcare Provider	Tabbatha Mirfield and Sharon Gaskey	2407 W 49th St, Davenport, IA 52806

Childcare Provider	Candy Jones	6323 Western Ave, Davenport, IA 52806
Childcare Provider	Carey Long	3342 W Garfield St, Davenport, IA 52804
Childcare Provider	Carrie Morgan	827 W 8th St, Davenport, IA 52802
Childcare Provider	Catherine Harden	1123 N Lincoln Ave, Davenport, IA 52804
Childcare Provider	Cathy Mays	1630 Warren St, Davenport, IA 52804
Childcare Provider	Cathy Wagner	2214 W 1st St, Davenport, IA 52802
Childcare Provider	Celeste Fuller	3345 W Hayes St, Davenport, IA 52804
Childcare Provider	Celia Chambers	1216 N Gaines St, Davenport, IA 52804
Childcare Provider	Chamirra Cooper	2010 Davie St, Davenport, IA 52804
Childcare Provider	Charity Dynes	2112 Wilkes Ave, Davenport, IA 52804
Childcare Provider	Chasity Scace	1543 George Washington Blvd, Davenport, IA 52804
Childcare Provider	Cherena Gary and Larry Gary	7102 Madison St, Davenport, IA 52806
Childcare Provider	Children's Village Hoover	1002 Spring St, Davenport, IA 52803
Childcare Provider	Children's Village West	1757 W 12th St, Davenport, IA 52804
Childcare Provider	Christ's Family Day Care	4601 Utica Ridge Rd, Davenport, IA 52807
Childcare Provider	Cindy Tyler	1343 W 4th St, Davenport, IA 52804
Childcare Provider	Connie Combs	2826 Fair Ave, Davenport, IA 52803
Childcare Provider	Cora Shannon	6507 Silver Creek Dr, Davenport, IA 52806
Childcare Provider	Corey Lawson	2715 W 71st St, Davenport, IA 52806
Childcare Provider	Cornelia McCall	1926 Iowa St, Davenport, IA 52803
Childcare Provider	Cory Gomez	3630 Sunnyside Ave, Davenport, IA 52802
Childcare Provider	Kim Brewster	2016 Lorton Ave, Davenport, IA 52803
Childcare Provider	KinderCare Learning Center #0837	2108 E Locust St, Davenport, IA 52803
Childcare Provider	Kristin Beutel	2423 W Locust St, Davenport, IA 52804
Childcare Provider	Kristin Callaway	416 W 31st St, Davenport, IA 52803
Childcare Provider	Kristina Chamberlin	5006 N Dittmer St, Davenport, IA 52806
Childcare Provider	Lacinda Ramey	613 Taylor St, Davenport, IA 52802
Childcare Provider	Larson, Kimberly	3440 Jersey Ridge Rd Unit 22, Davenport, IA 52807
Childcare Provider	LaTanya Milton	326 W 11th St, Davenport, IA 52803
Childcare Provider	LaTonya Davis	1906 Virginia Ave, Davenport, IA 52803
Childcare Provider	Laurie Vance	5901 Elmore Ave Apt j-8, Davenport, IA 52807
Childcare Provider	Leandra Paavo	125 W 47th St, Davenport, IA 52806
Childcare Provider	Leslie Hamilton	2802 Grand Ave, Davenport, IA 52803
Childcare Provider	Lethia Wright	1109 Calvin St, Davenport, IA 52804
Childcare Provider	Liberty Hill	1524 Mound St, Davenport, IA 52803
Childcare Provider	Linda Hachmann	1805 W 38th St, Davenport, IA 52806
Childcare Provider	Linda Hayes	2727 W 34th St, Davenport, IA 52806
Childcare Provider	Linda Tucker	1119 Warren St, Davenport, IA 52804
Childcare Provider	Tammy Hogle	4117 N Elsie Ave, Davenport, IA 52806
Childcare Provider	Tamorrow Bankston	2117 Jersey Ride Rd, Davenport, IA 52803
Childcare Provider	Tamys Tots LLC	3236 W 17th St, Davenport, IA 52804
Childcare Provider	Tanya Hammock	5106 Brown St, Davenport, IA 52806
Childcare Provider	Teresa Gales	5600 Jersey Ridge Rd Apt R1, Davenport, IA 52807
Childcare Provider	Teri Maxwell	1429 W Kimberly Rd, Davenport, IA 52806
Childcare Provider	The Growing Tree Preschool and Daycare	2014 N Marquette St, Davenport, IA 52804
Childcare Provider	Tiffanie Jones	5901 Elmore Ave Apt t-15, Davenport, IA 52807
Childcare Provider	Tina Crockett	4541 Canterbury Ln, Davenport, IA 52806
Childcare Provider	Tionna Coppage	6405 Scott St, Davenport, IA 52806
Childcare Provider	Traci White	2810 W 68th St, Davenport, IA 52806



Childcare Provider	Trinity Lutheran School Davenport	1122 W Central Park Ave, Davenport, IA 52804
Childcare Provider	Truman Elementary Stepping Stones	5506 N Pine St, Davenport, IA 52806
Childcare Provider	Verlina Howard	1218 Adams St, Davenport, IA 52803
Childcare Provider	Cynthia Volquardsen	2141 W 30th St, Davenport, IA 52804
Childcare Provider	Debora Schumacher	3504 W 42nd St Apt 100, Davenport, IA 52806
Childcare Provider	Debra Haskins	2110 W Central Park Ave, Davenport, IA 52804
Childcare Provider	Diane Sambdman	2510 W 69th St, Davenport, IA 52806
Childcare Provider	Donneshia White	1029 1/2 W 15th St, Davenport, IA 52804
Childcare Provider	Donnita LaGrone	728 Westerfield Rd, Davenport, IA 52806
Childcare Provider	Donya Serrano	2028 Washington St, Davenport, IA 52804
Childcare Provider	Dorothy Jones	1531 Wisconsin Ave, Davenport, IA 52804
Childcare Provider	Dorshay Walker	1310 College Ave, Davenport, IA 52803
Childcare Provider	Eisenhower Elementary Stepping Stones	2827 Jersey Ridge Rd, Davenport, IA 52803
Childcare Provider	Elaine Nicol	6526 Hoover Rd, Davenport, IA 52806
Childcare Provider	Mary Ann Middleton	4612 Scott St, Davenport, IA 52806
Childcare Provider	Mary Brandon	410 W 16th St, Davenport, IA 52803
Childcare Provider	McKinley Elementary Stepping Stones	1716 Kenwood Ave, Davenport, IA 52803
Childcare Provider	Meagan Pass	629 E 14th St, Davenport, IA 52803
Childcare Provider	Melanie Schneckloth	17920 210th St, Davenport, IA 52807
Childcare Provider	Melissa Coy	3551 W Columbia Ave, Davenport, IA 52804
Childcare Provider	Melissa Hughes	5007 Western Ave, Davenport, IA 52806
Childcare Provider	Melissa Stafford	1718 E 32nd St, Davenport, IA 52807
Childcare Provider	Michelle Morgan	1024 Tremont Ave, Davenport, IA 52803
Childcare Provider	Miranda Moore	2640 Sheridan St, Davenport, IA 52803
Childcare Provider	Monique Dillenburg	1331 W 15th St, Davenport, IA 52804
Childcare Provider	Montiscia Samuels	328 N Pine St, Davenport, IA 52802
Childcare Provider	Lisa Conger	2030 N Marquette St, Davenport, IA 52804
Childcare Provider	Lolisa Foster	5901 Elmore Ave t-13, Davenport, IA 52807
Childcare Provider	Lori Moughler	1840 W 38th Pl, Davenport, IA 52806
Childcare Provider	Lori Taylor	1712 E 11th St, Davenport, IA 52803
Childcare Provider	Lorian Harrington	6218 N Ripley St, Davenport, IA 52806
Childcare Provider	Lots Of Activity Child Care Center	4508 El Rancho Drive, Davenport, IA 52806
Childcare Provider	Madison Elementary Stepping Stones	116 E Locust Street, Davenport, IA 52803
Childcare Provider	Magen Lucas	7222 Hillandale Rd Apt 1, Davenport, IA 52806
Childcare Provider	Mandy Brooks	2613 N Stark St, Davenport, IA 52804
Childcare Provider	Marcellina Ruiz	1366 W Kimberly Rd, Davenport, IA 52806
Childcare Provider	Markeeta Thomas	2117 Judson Ct, Davenport, IA 52803
Childcare Provider	Victoria McMullan	638 W 64th St, Davenport, IA 52806
Childcare Provider	Villa Maria Child Care-Assumption High School	1020 W Central Park Ave, Davenport, IA 52804
Childcare Provider	Wanda Holley	1101 W Locust St, Davenport, IA 52804
Childcare Provider	Wardean Allen	622 W 64th St, Davenport, IA 52806
Childcare Provider	Washington Elementary Stepping Stones	1608 E Locust St, Davenport, IA 52803
Childcare Provider	Westside Christian Daycare and Preschool	3908 W River Drive, Davenport, IA 52802
Childcare Provider	William Bailey	3414 W 42nd St, Davenport, IA 52806

Childcare Provider	Wilson Elementary Stepping Stones	2002 N Clark St, Davenport, IA 52804
Childcare Provider	Yvonne Mathis-Joiner	2654 N Division St, Davenport, IA 52804
College	Eastern Iowa Community Colleges	Eastern Iowa Community Colleges, Davenport, IA
College	Palmer College of Chiropractic	Palmer College of Chiropractic, Davenport, IA
College	St. Ambrose University	St. Ambrose University, Davenport, IA
College	Hamilton Technical College	Hamilton Technical College, Davenport, IA
Family Support Specialists	Family Resources - Integrated Health Home	2800 Eastern Avenue, Davenport, IA
Family Support Specialists	Robert Young - Integrated Health Home	500 W. River Drive, Davenport, IA
Family Support Specialists	Vera French Mental Health - Integrated Health Home	1441 W. Central Park Avenue, Davenport, IA
Library	Davenport Public Library	321 Main St, Davenport, IA 52801
Library	Fairmount Street Branch	3000 N Fairmount St, Davenport, IA 52804
Library	Eastern Avenue Branch Library	6000 Eastern Ave, Davenport, IA 52807
Park	West Lake Park	14910 110th Ave, Davenport, IA 52804
Place of Worship	First Church of the Nazarene	1010 N Clark St, Davenport, IA 52804
Place of Worship	Assembly of God Church	3908 W River Dr, Davenport, IA 52802
Place of Worship	Grace Fellowship	4227 W Kimberly Rd, Davenport, IA 52806
Place of Worship	All Faiths Metro Community Church	2930 Locust St, Davenport, IA 52804
Place of Worship	Immanuel Evangelical Lutheran Church	3834 Rockingham Rd, Davenport, IA 52802
Place of Worship	Franklin Christian Day School	3908 W River Dr, Davenport, IA 52802
Place of Worship	Metropolitan Community Church	2930 Locust St, Davenport, IA 52804
Place of Worship	Pentecostal Church of God	1234 N Ripley St, Davenport, IA 52803
Place of Worship	Grandview Baptist Church	4316 N Ripley St, Davenport, IA 52806
Place of Worship	Grace United Methodist Church	2651 Telegraph Rd, Davenport, IA 52804
Place of Worship	Freedom Assembly of God Church	4721 Northwest Blvd, Davenport, IA 52806
Place of Worship	Central Church of Christ	4900 Northwest Blvd, Davenport, IA 52806
Place of Worship	Word of Faith Tabernacle Church	Davenport, IA 52802
Place of Worship	Gospel Mission Temple	5074 N Pine St, Davenport, IA 52806
Place of Worship	Davenport Seventh Day Adventist Church	4444 W Kimberly Rd, Davenport, IA 52806
Place of Worship	Community of Christ Latter Day Saints	Davenport, IA 52806
Place of Worship	High Point Bible Chapel	2600 W 63rd St, Davenport, IA 52806
Place of Worship	Christ Apostolic Church	423 E 32nd St, Davenport, IA 52803
Place of Worship	Northpark Church of God	Davenport, IA 52804
Place of Worship	The Church of Jesus Christ of Latter Day Saints	4929 Wisconsin Ave, Davenport, IA 52806
Place of Worship	Prince of Peace Lutheran Church	415 W 53rd St, Davenport, IA 52806
Place of Worship	Vietnamese Baptist Church	5127 Locust St, Davenport, IA 52804
Place of Worship	House of the Lord Mission	Davenport, IA 52803
Place of Worship	First Church of the Nazarene	1010 N Clark St, Davenport, IA 52804
Place of Worship	Faith United Methodist Church	3322 W Lombard St, Davenport, IA 52804
Place of Worship	First Bible Missionary Church	6310 N Pine St, Davenport, IA 52806
Place of Worship	Christian Science Reading Room	Davenport, IA 52803

Place of Worship	Heritage Free Will Baptist Church	Davenport, IA 52804
Place of Worship	Faith United Church of Christ	1630 W 38th St, Davenport, IA 52806
Place of Worship	Marantha Church of God	3815 Rockingham Rd, Davenport, IA 52802
Place of Worship	Grace Brethren Church	4227 W Kimberly Rd, Davenport, IA 52806
Place of Worship	Christ Chapel	3414 Rockingham Rd, Davenport, IA 52802
Place of Worship	Evangelical Bible Church	Davenport, IA 52803
Place of Worship	Third Missionary Baptist Church	222 W 14th St, Davenport, IA 52803
Place of Worship	Risen Christ Lutheran Church	6021 Northwest Blvd, Davenport, IA 52806
Place of Worship	Church of Latter Day Saints	4929 Wisconsin Ave, Davenport, IA 52806
Place of Worship	Jerusalem Temple Apostolic Church	1440 W 3rd St, Davenport, IA 52802
Place of Worship	Zion Lutheran Church	1216 W 8th St, Davenport, IA 52802
Place of Worship	Christ the King Chapel	Davenport, IA 52803
Place of Worship	Kingdom Hall Jehovahs Witnesses	3801 Hillandale Rd, Davenport, IA 52806
Place of Worship	Saint Albans Church	3510 W Central Park Ave, Davenport, IA 52804
Place of Worship	Harrison Gospel Church	Davenport, IA 52803
Place of Worship	Grace Church	Davenport, IA 52802
Place of Worship	Berean Church	3103 W 13th St, Davenport, IA 52804
Place of Worship	Holy Family Church	1923 Fillmore St, Davenport, IA 52804
Place of Worship	Calvary Chapel	Pershing Ave, Davenport, IA 52803
Place of Worship	Saint Mathews Lutheran Church	1915 W Kimberly Rd, Davenport, IA 52806
Place of Worship	Newcomb Memorial Church	2619 N Division St, Davenport, IA 52804
Place of Worship	Our Lady of Victory Church	4105 N Division St, Davenport, IA 52806
Place of Worship	Saint Marks Church	2363 W 3rd St, Davenport, IA 52802
Place of Worship	Faith Church	1630 W 38th St, Davenport, IA 52806
Place of Worship	New Testament Baptist Church	Davenport, IA 52806
Place of Worship	Saint Alphonsus Church	2618 Boies Ave, Davenport, IA 52802
Place of Worship	All Saints Lutheran Church	5002 Jersey Ridge Rd, Davenport, IA 52807
Place of Worship	The Church of God of Prophecy	Davenport, IA 52806
Place of Worship	Cedar Memorial Church	Davenport, IA 52802
Place of Worship	Calvary Church	Pershing Ave, Davenport, IA 52803
Place of Worship	Saint Marys Church	516 Fillmore St, Davenport, IA 52802
Place of Worship	Christ United Methodist Church	2330 W 41st St, Davenport, IA 52806
Place of Worship	Friends Church	Davenport, IA 52806
Place of Worship	West Park Church	4209 Locust St, Davenport, IA 52804
Place of Worship	Calvary Temple Baptist Church	Davenport, IA 52806
Place of Worship	Grace Evangelical Church	5520 Eastern Ave, Davenport, IA 52807
Place of Worship	Saint Joseph Church	Davenport, IA 52803
Place of Worship	Streetfire Gospel Church	Davenport, IA 52804
Place of Worship	Grace Church	Davenport, IA 52802
Place of Worship	Ridgeview Church	Davenport, IA 52806
School (K-12)	Central High School	1120 Main St, Davenport, IA 52803
School (K-12)	North High School	626 W 53rd St, Davenport, IA 52806
School (K-12)	West High School	3505 W Locust, Davenport, IA 52804
School (K-12)	Mid City High	3801 Marquette Street, Davenport, IA 52806
School (K-12)	Wood Intermediate	5701 N Division, Davenport, IA 52806
School (K-12)	Frank L Smart Intermediate	1934 W 5th St, Davenport, IA 52802
School (K-12)	Sudlow Intermediate	1414 E Locust St, Davenport, IA 52803
School (K-12)	Williams Intermediate	3040 N Division, Davenport, IA 52804
School (K-12)	Adams Elementary School	3029 N Division Street, Davenport, IA 52804

School (K-12)	Buchanan Elementary School	4515 N. Fairmount, Davenport, IA 52806
School (K-12)	Eisenhower Elementary School	2827 Jersey Ridge Rd, Davenport, IA 52803
School (K-12)	Fillmore Elementary School	7307 N Pacific, Davenport, IA 52806
School (K-12)	Garfield Elementary School	902 E 29th St, Davenport, IA 52803
School (K-12)	Harrison Elementary School	1032 W 53rd St, Davenport, IA 52806
School (K-12)	Hayes Elementary School	622 S Concord St, Davenport, IA 52802
School (K-12)	Children's Village At Hoover	1002 Spring Street, Davenport, IA 52802
School (K-12)	Jackson Elementary School	1307 Wisconsin, Davenport, IA 52804
School (K-12)	Jefferson Elementary School	1027 Marquette St, Davenport, IA 52804
School (K-12)	Madison Elementary School	116 E Locust St, Davenport, IA 52803
School (K-12)	McKinley Elementary School	1716 Kenwood Ave, Davenport, IA 52803
School (K-12)	Monroe Elementary School	1926 W 4th St, Davenport, IA 52802
School (K-12)	Truman Elementary School	5506 N Pine, Davenport, IA 52806
School (K-12)	Washington Elementary School	1608 E Locust St, Davenport, IA 52803
School (K-12)	Wilson Elementary School	2002 N Clark St, Davenport, IA 52804
School (K-12)	Children's Village West	1757 West 12th Street, Davenport, IA 52804
School (K-12)	Children's Village Hayes	622 S. Concord St, Davenport, IA 52802
School (K-12)	Assumption High School	1020 W Central Park Ave, Davenport, IA 52804
School (K-12)	All Saints Catholic School	1926 Marquette St, Davenport, IA 52804-2198
School (K-12)	St Paul The Apostle School	1007 E Rusholme St, Davenport, IA 52803
School (K-12)	John F Kennedy Cath Sch	1627 W 42nd St, Davenport, IA 52806
School (K-12)	Trinity Lutheran School	1122 W Central Pk Ave, Davenport, IA 52804
Workforce Development Center	Davenport IowaWORKS Office	1801 E Kimberly Rd. Suite A, davenport,ia,52807