



Recovery Iowa - Council Bluffs 360

August, 2022



Report provided to the Iowa Department of Public Health

This project was supported by the Iowa Department of Public Health, Bureau of Substance Abuse (IDPH) via a sub-ward from the Substance Abuse and Mental Health Services (SAMHSA) of the U.S. Department of Health and Human Services (HHS) as part of a financial assistance award totaling 350,000 with 100 percent funded by SAMHSA/HHS. The contents are those of the author(s) and do not necessarily represent the official views of, nor an endorsement by, IDPH, SMHSA/HHS, or the U.S. Government



Contents

1 Overview	3
2 What is Recovery?	3
3 What is a Recovery Community Center?	3
4 Is Your Community Recovery Ready?	4
5 What Peer Support Meetings are Available in Your Area?	5
6 What Recovery Resources Are Available in Your Area?	6
7 What Community Resources Are Available in Your Area?	7
8 Which Neighborhoods in Your Community Need Additional Health Resources and Support?	8
9 What's Driving Health Disparities in Your Community?	11
10 APPENDIX 1: Data Used in this Report	12
10.1 Recovery Ready Community Index (RRCI)	12
10.2 PSC Meeting Finder Tool	12
10.3 PSC Resource Recovery Tool	14
10.4 PSC Community Resource Locator Tool	15
10.5 Substance Use Vulnerability Index	16
10.6 Social Determinants of Health Index	18
11 Appendix 2: Peer Support Contacts in Your Area	19
12 Appendix 3: Recovery Resources in Your Area	20
13 Appendix 4: Community Resources in Your Area	22

Overview

At the request of the Iowa Department of Public Health, Bureau of Substance Abuse, the Public Science Collaborative (PSC) developed community-specific reports to support recovery efforts in Iowa. Recognizing the need to strengthen substance use recovery efforts throughout the state, we identified a large number of existing recovery-oriented resources in Council Bluffs, which we describe and map in the pages that follow. We developed additional maps to identify at-risk neighborhoods that will benefit from targeted health interventions and additional community resources. For additional questions or information about this report, the data tools described, or the Public Science Collaborative, please reach out to the principal investigators of this study, Dr. Shawn Dorius at sdorius@iastate.edu, or Dr. Cassandra Dorius at cdorius@iastate.edu.

What is Recovery?

Though substance use recovery is an evolving concept that has been defined in a number of ways over the years, an emerging consensus is that recovery is a voluntary path toward improved personal well-being coupled with a diminished risk of substance use relapse. As noted by Bill White (2007):

Recovery is the experience through which individuals, families, and communities impacted by severe alcohol and other drug (AOD) problems utilize internal and external resources to voluntarily resolve these problems, heal the wounds inflicted by AOD related problems, actively manage their continued vulnerability to such problems, and develop a healthy, productive, and meaningful life.

In White's view, resources help individuals, families, and communities in two ways. First, they help address alcohol and other drug-related problems (for example, addiction, unemployment, housing instability, family separation), and second, they support health, productivity, and meaning in post-treatment life. The appeal of this view is that it is explicit and direct in its recognition that recovery involves not only internal resources such as mental, emotional, and genetic factors but also external ones. In thinking about where to focus federal and state resources to develop a network of community-based recovery centers in Iowa, the key question is, "What kinds of external resources matter most for sustained SUD recovery?"

If we knew which resources were most helpful to long-run recovery, we could target towns and cities with large stocks of 'recovery resources' to grow Recovery Community Centers

What is a Recovery Community Center?

Recovery Community Centers (RCCs) represent low-cost, member-driven, voluntarist, locally managed, and community-engaged pathways to sustainable recovery for people with substance use disorder, or SUD. RCCs accomplish these goals by linking people to existing resources and infrastructure and promoting a vibrant recovery culture based in a **physical community center where people in recovery can visit, engage with others in recovery, and access resources**. RCCs are an innovative, safe, and helpful source of community recovery support that provides linkages to existing local services and resources that support recovery for people with a substance use or mental health disorder. RCCs support recovery by helping people in the community who have a history of substance use to develop recovery capital, the personal resources that enable people to live healthy, productive, and community engaged lives. RCCs do this by connecting members of the recovery community, called peers, with different types of services such as recovery coaching, medication assisted treatment, connection to employment services and child care, recovery-oriented housing, or education and workforce development training services. Located in the heart of the community, Recovery Community Centers improve the ability of the local recovery community to care for one another, and they also help destigmatize the lives of people in recovery.

The RCC model of recovery is validated by academic studies and is promoted by both the SUD community and public health officials. However, finding the right communities for RCC development in Iowa has proven difficult, underscoring the fact that Iowa is one of just a few states in the U.S. that has yet to adopt the recovery community model.

Is Your Community Recovery Ready?

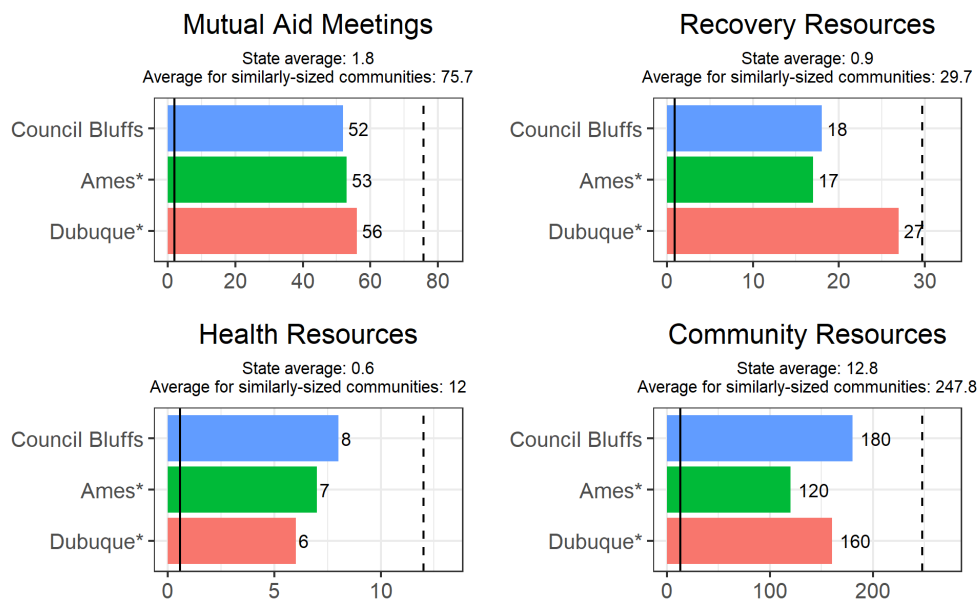
What is the RRCI and how was it created? We consulted scientific literature on substance use recovery and engaged key stakeholders who work directly with people in recovery around the country and in Iowa. This helped us to identify 17 unique community-based resources that we collected for almost all of Iowa’s 944 cities and towns. In total, we found nearly 16,000 community features that support recovery. We mapped and analyzed these resources so we could identify a short list of ‘Recovery Ready’ communities across the state, culminating in the first-of-its-kind index: **The Recovery Ready Community Index (RRCI)**.

The RRCI encompasses four dimensions: breadth, depth, size, and strength. Breadth of recovery resources was measured by counting the number of different types of recovery resources in each county and community. For example, counting if there is at least one hospital, one treatment center, and one drug drop off location in town. Depth of recovery resources was measured by first counting the total number of resources in each category and then ranking cities accordingly. This gives added importance to places that have, for example, more than one medication assisted treatment provider and many different recovery houses in town. Size of local recovery culture was measured by the total number of weekly mutual aid and peer support meetings per week in each city (e.g. total number of NA and AA meetings). Finally, the strength of the recovery community was measured as the difference between the total number of weekly peer support meetings and the number of meetings expected, based upon the total population of each town. These four dimensions were used to create the Recovery Ready Community Index. The RRCI is the simple average of each town’s ranking across the four dimensions or recovery readiness. Places that ranked high on all four dimensions are labeled as especially recovery ready.

How recovery ready is your community? Are you well-positioned to support a Recovery Community Center in your community? Relative to all cities, Council Bluffs ranks low in terms of its recovery readiness. **According to the Recovery Ready Community Index (RRCI), Council Bluffs scored 38.0, placing it at 19th when compared with other Iowa cities** (Iowa’s RRCI state average is 32.7).

Another way to understand recovery resources in Council Bluffs is to compare them with those of the state average and other communities of similar size. This comparison is displayed in Figure 1, which compares Council Bluffs with Ames and Dubuque. An average across all Iowa towns as well as the subset having a comparable population level are also included as a baseline for comparison.

Fig. 1. Recovery Ready Community Index: Comparison of Council Bluffs to Other Iowa Communities on ‘Recovery Readiness’



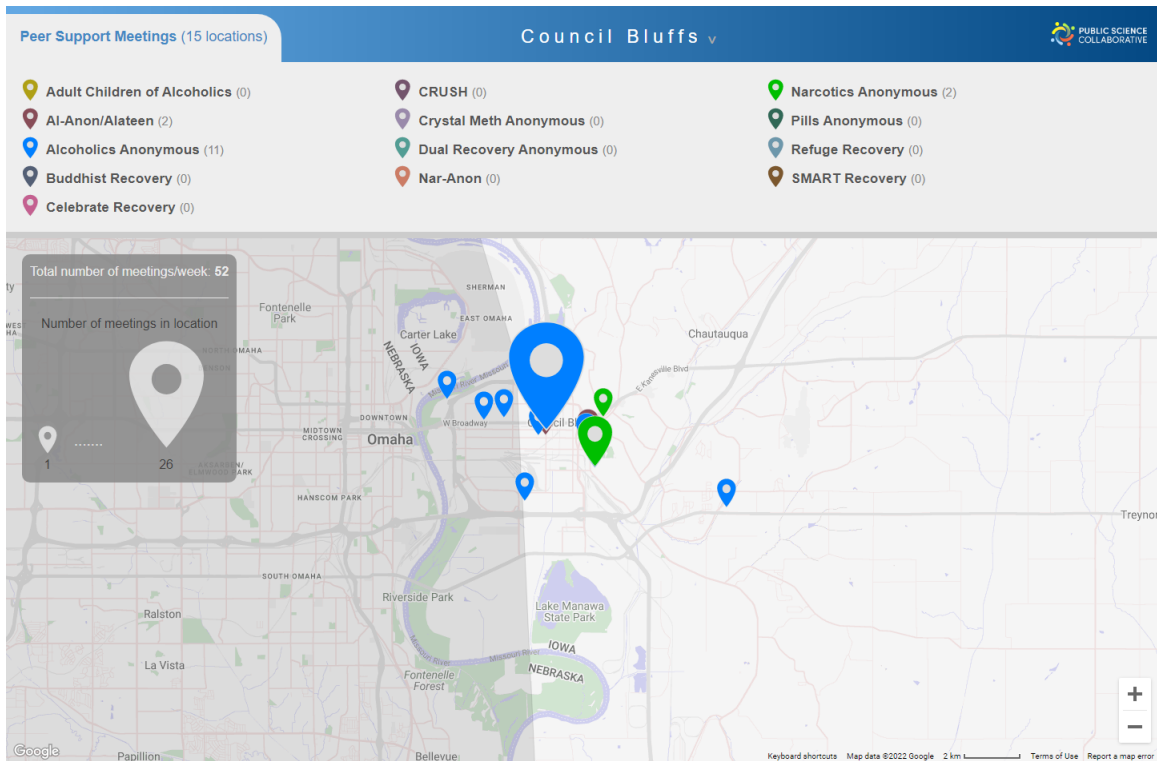
* The Iowa cities most comparable to Council Bluffs by population are Ames and Dubuque.

** The solid vertical line represents the average for all 944 communities in Iowa and the dashed vertical line represents the average for Iowa communities with populations of more than 50,000 people.

What Peer Support Meetings are Available in Your Area?

Recovery meetings, such as Alcoholics and Narcotics Anonymous, play a significant role in facilitating the recovery process. Despite the importance of these meetings there is no coherent ‘one stop shop’ to find the meeting you need, when you need it. People usually need to go through several steps, such as searching for meetings on Google, or looking for a specific meeting time or place on a local listings’website. It can be hard enough to connect with peer support during the best of times, but doubly difficult when you are in crisis and questioning your recovery. Magnifying the challenge of finding the right meeting at the right time is being new to a community, unfamiliar with the members of a local meeting, and being in a moment of duress.

Fig. 2. Peer Support Meetings in Council Bluffs



Note: Larger markers indicate the locations that host more than one meeting per week. For example, in Council Bluffs there are 52 total meetings hosted each week in the locations identified above.

We developed the PSC Meeting Finder tool above to make it easier to find local meetings. We do this by presenting a map-based list of meetings all throughout Iowa and we update the map every single day. It’s a simple interface that helps people to find the appropriate meetings nearby, right now. Users can filter meetings by time of day, day of week, or whether childcare is available, for example, to find the right meeting at the right time. Having a responsive design, PSC Meeting Finder Tool runs efficiently and quickly on many different kinds of computers and mobile devices such as smartphones. Figure 2 is a screen capture of the PSC Meeting Finder where you can see the location of all known peer support meetings in your community. A web version of this map is available at: <http://public-science.org/reportmaps/meetings/?city=Council%20Bluffs>. Note that the peer support data is updated regularly and may not exactly match Figure 2. A full listing of these resources is provided as a table with meeting, type, group name, number of meetings per week, and location of meetings in Appendix 2.

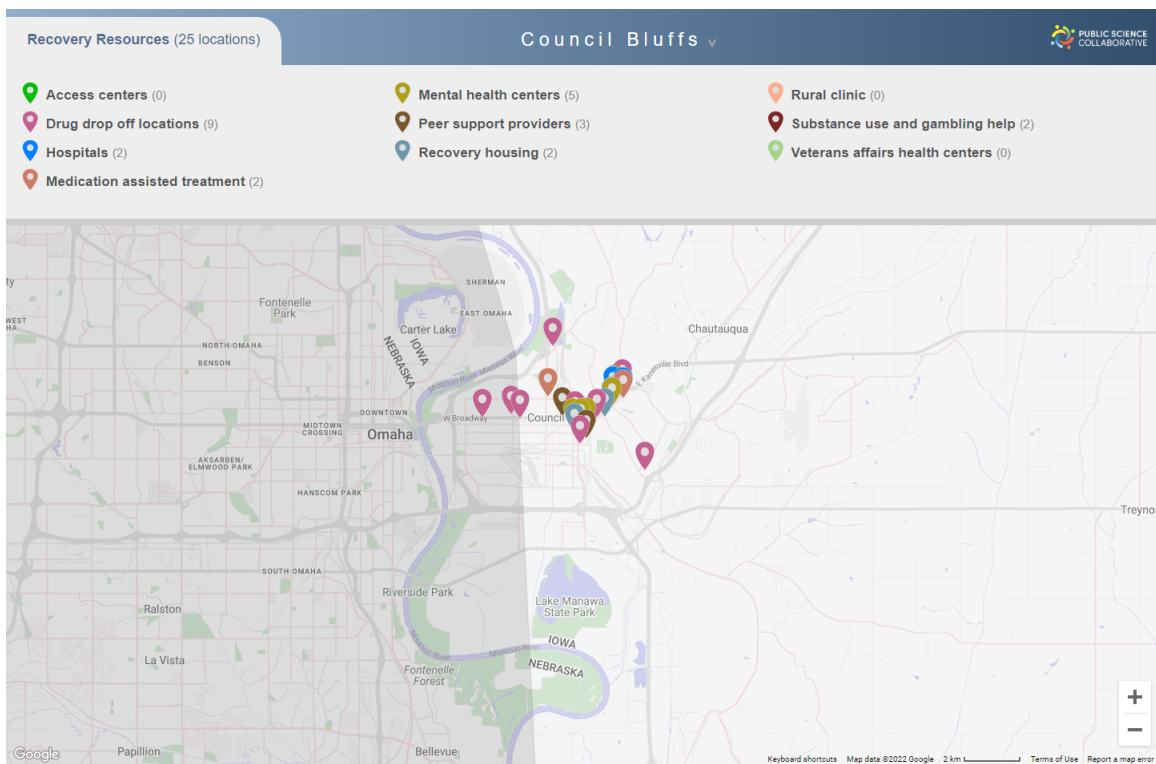
Council Bluffs has about 52 peer support meeting locations in a given week. Figure 2. indicates the location of these meetings as well as locations where there are few or no weekly meetings, which may help local peer support groups to identify new places to sponsor a meeting and support local recovery. The number of meetings held by each group is tabulated in the top panel of this figure indicating the prominence of different peer support organizations in the community.

What Recovery Resources Are Available in Your Area?

Despite their importance, community-based recovery resources can be hard to find. Whether a person is new to the community or a long-term resident, some resources remain unknown to many people in the community. The PSC Recovery Resource Locator aims to help solve this problem. Figure 3 is a screen capture of the PSC Recovery Resource Locator where you can see the location of some of the resources your community offers to its recovery community. A web version of this map is available at: <http://public-science.org/reportmaps/recoveryresources/?city=Council%20Bluffs>. A full listing of these resources is provided as a table with resource name, type, and location in Appendix 3.

Council Bluffs has 26 recovery resources available to support its residents in recovery from substance use disorders. These resources provide a variety of services and care to respond to the needs of individuals in the community. Drug drop off locations allow individuals to dispose of their unneeded prescription drugs to limit abuse of these substances. Medication assisted therapy helps alleviate withdrawal symptoms for individuals in recovery. Mental health resources are also an important resource in helping treat mental health challenges associated with SUD. Mutual aid and recovery housing groups are designed to provide a community of support to help address the material needs of people using substances. Finally, SUD treatment facilities and Veterans Affairs health clinics provide medical care to individuals using substances. These resources and others like them are tabulated in the top panel of Figure 3 to provide insight into strong and weak areas in community recovery resources.

Fig. 3. Recovery Resources in Council Bluffs

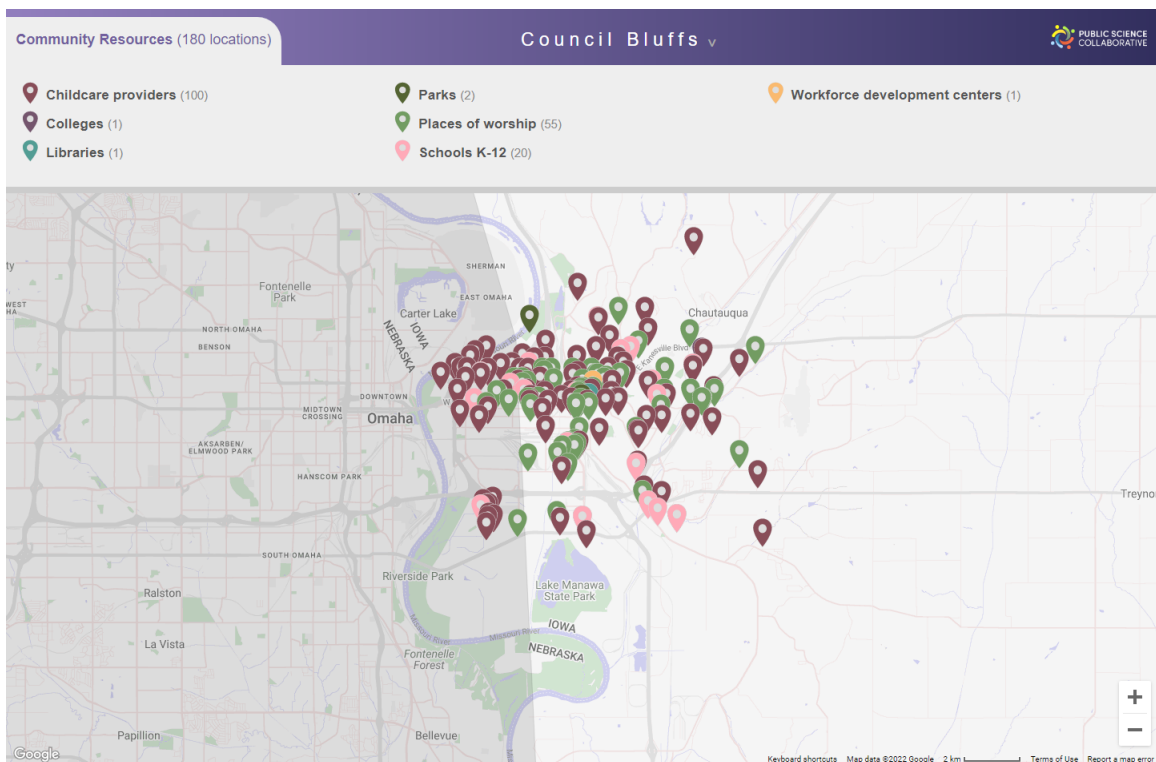


What Community Resources Are Available in Your Area?

In addition to peer support meetings and clinical care, people in recovery benefit from other community resources. For example, having easy access to parks and natural areas has been shown to support substance use recovery. Participation in community groups, including religious organizations, may be a source of strength and support for many people in recovery. We have identified many additional community assets that can help people in their own recovery journey. The state of Iowa has a wide range of public and private institutions and organizations dedicated to providing health and human services, support, and activities to improve quality of life and well-being of all Iowans. The PSC Community Resource Locator is a utility for discovering many of these resources. Figure 4 is a screen capture of the PSC Community Resource Locator where you can see the location of some of the resources your community offers to its recovery community. A web version of this map is available at: <http://public-science.org/reportmaps/communityresources/?city=Council%20Bluffs>. A full listing of these resources is provided as a table with resource name, type, and location in Appendix 4.

Council Bluffs has 181 community resources available for its residents to live their best lives and to support those in recovery from substance use disorders. These may include childcare providers, universities and technical colleges, libraries, parks, places of worship, K-12 schools, and workforce development centers. The number of each type of resource is broken down in Figure 4., highlighting areas of success and areas for growth in your community.

Fig. 4. *Community Resources in Council Bluffs*

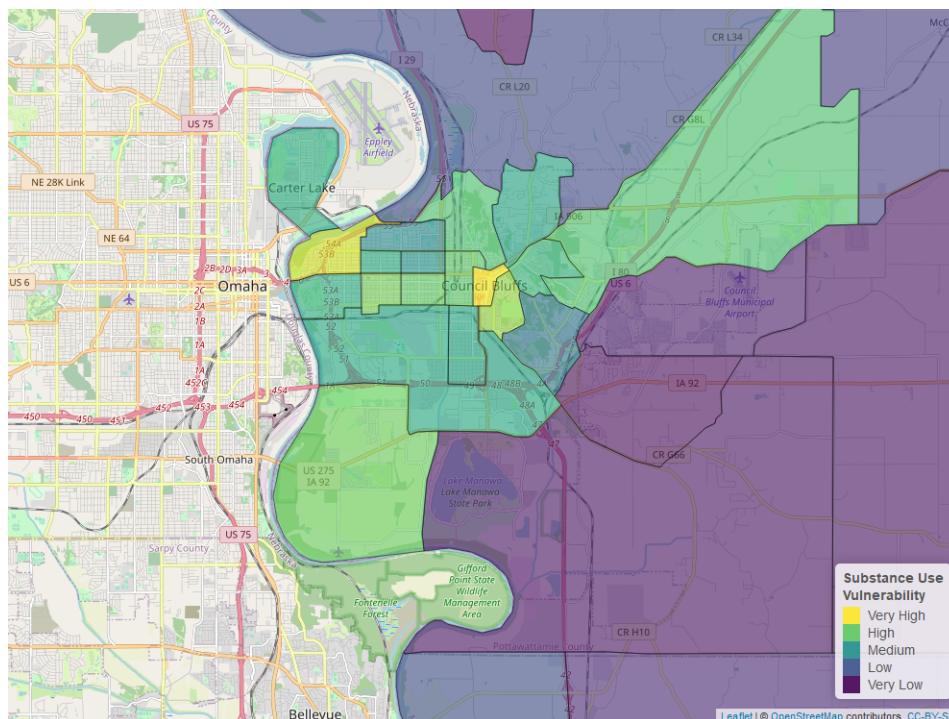


Which Neighborhoods in Your Community Need Additional Health Resources and Support?

The Public Science Collaborative has developed data resources to help community organizations, local governments, and public health practitioners to more effectively target substance use prevention, treatment, and recovery interventions to the places in greatest need of resources. Geographic ‘hot spots’ identify places where local residents are at especially high risk for substance use disorder. We estimated statistical models using administrative data from the Treatment Episode Admissions Dataset (TEDS-A) and the National Survey of Drug Use and Health (NSDUH) to measure significant relationships between substances of misuse and socio-demographic characteristics known to affect health equity and substance use vulnerability. Neighborhood characteristics associated with each substance (e.g. methamphetamine, benzodiazepines) were overlaid with Census Bureau estimates of these same neighborhood characteristics, by census tract. Once mapped, these data help us to identify places with especially high concentrations of at-risk characteristics in need of targeted resources to reduce health inequities. You can learn more about the underlying models for this index in Appendix 1. The resulting maps are included in the pages that follow, and interactive maps can be found online at https://publicsciencecollaborative.shinyapps.io/iowa_sdoh/ and https://publicsciencecollaborative.shinyapps.io/ia_substance_use_vulnerability/.

Towns and cities in Iowa typically have neighborhoods with distinctive risk profiles, with some at especially high (or low) risk of harmful use of a specific substance, such as Heroin, Opioids, or Methamphetamine. Identification of these locations can guide public health outreach efforts and enable more targeted, substance-specific interventions based upon known neighborhood risk factors. To do so, we have developed a city map to identify overall substance use vulnerability, which can be used to support generalized substance use prevention, treatment, and recovery interventions (Figure 5). Maps pertaining to Opioid, Heroin, and Methamphetamine use are included to help identify trends specific to these specific drugs (Figures 6, 7, 8). Typically, areas high in overall substance use vulnerability are also high in substance use. When this is the case, it suggests that general health resources would benefit these places and their residents. If a particular neighborhood is high in a specific substance, drug-specific interventions may be an effective tool in supporting the area.

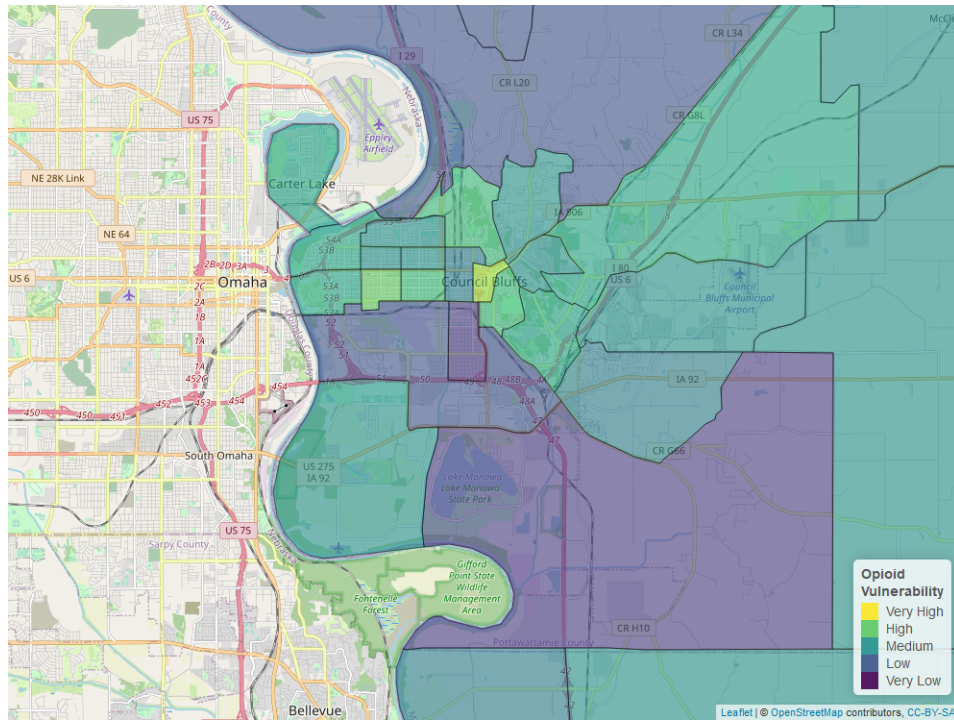
Fig. 5. *Neighborhood Vulnerability Index, All Substance Use*



Overall substance use vulnerability varies by neighborhood in Council Bluffs, but is generally higher than other communities in Iowa (see Figure 5). Due to neighborhood vulnerability, specific neighborhoods may benefit from a targeted approach rather than community wide efforts. Community-wide vulnerability was highest for

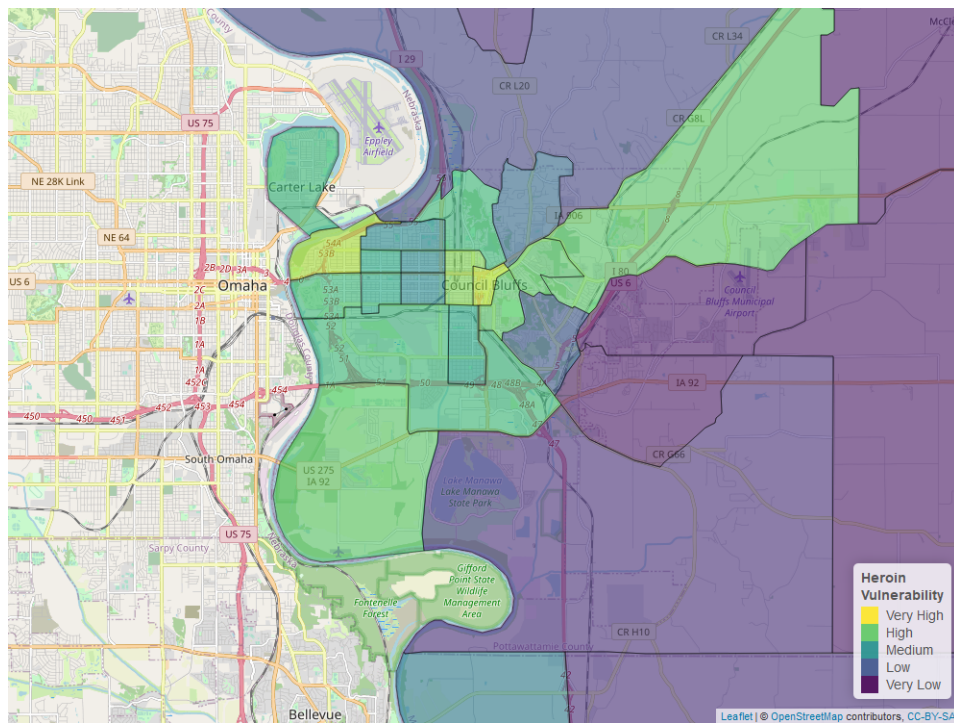
methamphetamine, and a breakdown for each substance is shown in the figures below.

Fig. 6. *Neighborhood Vulnerability Index, Opioid Use*



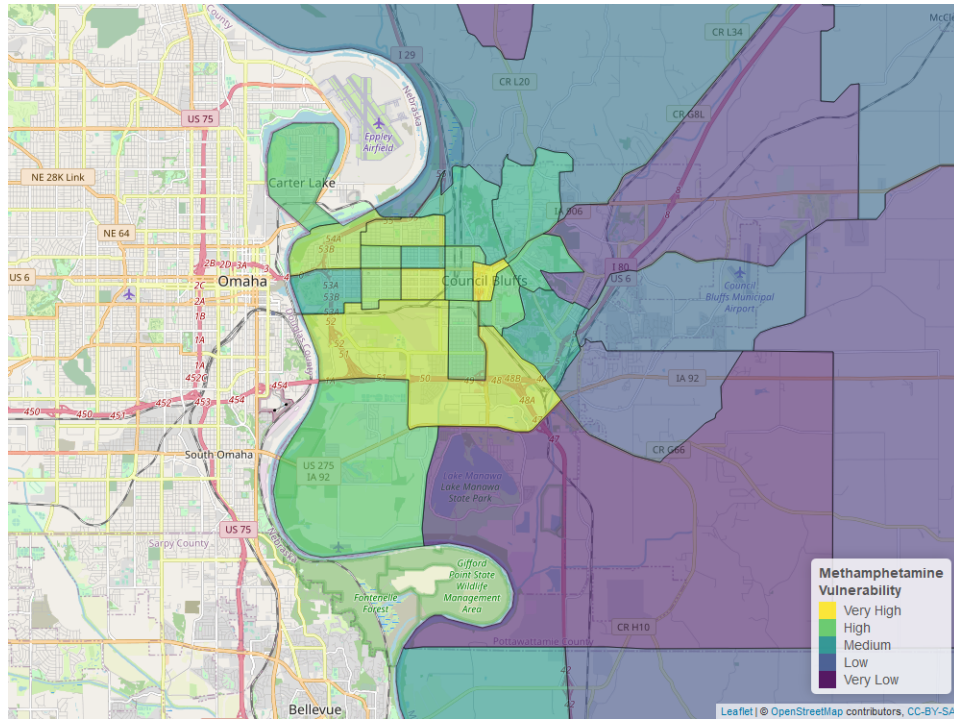
The overall opioid risk in Council Bluffs is about equal to the average for communities in Iowa (see Figure 6).

Fig. 7. *Neighborhood Vulnerability Index, Heroin Use*



The overall heroin risk in Council Bluffs is about equal to the average for communities in Iowa (see Figure 7).

Fig. 8. Neighborhood Vulnerability Index, Methamphetamine Use

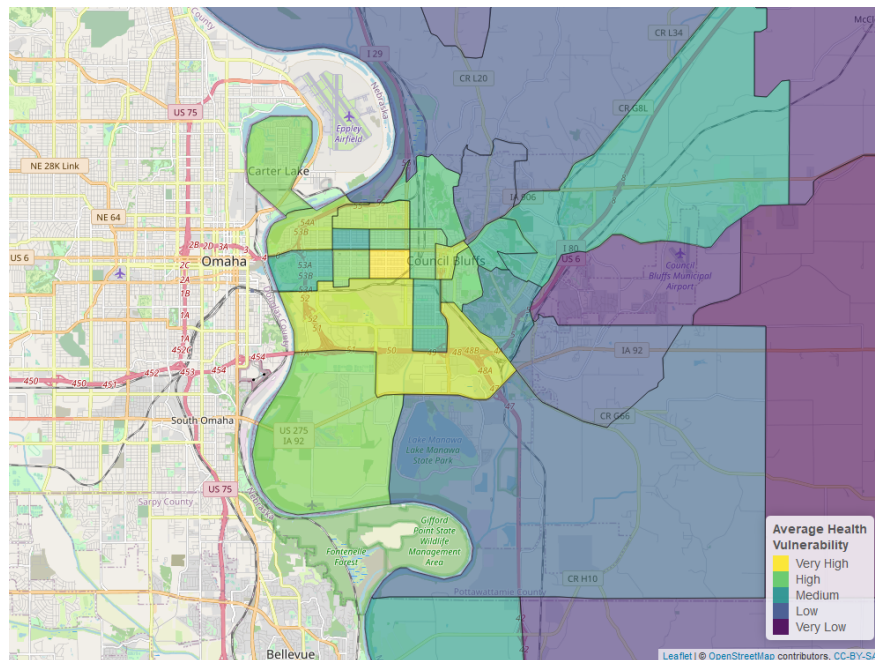


The overall meth risk in Council Bluffs is about equal to the average for communities in Iowa (see Figure 8).

What's Driving Health Disparities in Your Community?

In addition to the neighborhood vulnerability maps above, the Public Science Collaborative created a neighborhood map to understand health disparities in Council Bluffs that draws on well-established social determinants of health. By social determinants, we refer to health risks that are social in origin and tend to be unevenly distributed within a city or town. For example, in places with high average levels of education and low unemployment rates, residents tend to also have better overall health (e.g. longer life span and more healthy years of living). In places where average incomes are low and the rates of single parenting are high, people often have worse health, including higher death rates due to overdose and fewer healthy days. Knowing something about where the social determinants of health support well being and where their scarcity decreases well being can help local community organizations and governments to better target investments to reduce health disparities between neighborhoods.

Fig. 9. *Neighborhood-Level Health Disparities, Social Determinants*



According to the social determinants we considered, lack of education is the biggest risk factor for poor health and between neighborhood health disparities in Council Bluffs. Overall, health risks in Council Bluffs are about equal to the average for communities in Iowa.

APPENDIX 1: Data Used in this Report

10.1 Recovery Ready Community Index (RRCI)

Data Tool:	Recovery Ready Community Index
Data:	Data: PSC Meeting Finder Tool data; PSC Recovery Resources Locator Tool data; PSC Community Resources Tool data, U.S. Census Bureau American Community 5-year Estimates (ACS), 2015-2019

The Recovery Ready Community Index was designed to give a holistic view of a community’s “recovery readiness” and their ability to support people in recovery. The RRCI is constructed with four sub-measures: Breadth of Recovery Resources, Depth of Recovery Resources, Size of Recovery Culture, and Strength (Vibrancy) of Recovery Culture. You can read more about how the RRCI was developed on page two of this report. The specific recovery and community data collected to build the RRCI are detailed below and listed by name and source in Appendices 2, 3, and 4

10.2 PSC Meeting Finder Tool

Interactive Tool:	http://public-science.org/meetingfinder/
Data updated daily:	<i>Adult Children of Alcoholics, Al-Anon/Alateen, Alcoholics Anonymous (AA), Buddhist recovery, Celebrate Recovery, CRUSH, Crystal Meth Anonymous, Dual Recovery Anonymous, Nar-Anon, Narcotics Anonymous (NA), Pill Anonymous, Refuge Recovery, and SMART Recovery</i>

Under the hood, the PSC Meeting Finder Tool is a data pipelining system that fetches the information of the 13 different types of recovery meetings from their original sources, and integrates them into a state map (Following Figure). This system is composed of four major logical components: (1) automated robots that oversee and ‘scrape’ the peer-support websites for daily updates, (2) database infrastructure, (3) the web server infrastructure, and (4) PSC Meeting Finder web-based application. There are two types of automated program robots, called ‘bots’, utilized in this system: commander bots and scraper bots. The commander bot is in charge of running and logging the scraper bots, and reports to the system administrator when a scraper bot is unsuccessful. A scraper bot is in charge of scrapping the original listing websites, and populating the database with the cleaned data. The original listings might be unstructured and contain dirty data. It is the scraper bot’s duty to make sure that the data that is inserted into the database is clean and structured. These data are then pulled into the users’ browser by the PSC Meeting Finder Tool.

Table 1. *Peer Support Meeting Information for Council Bluffs*

Name of Meeting	Web Resource	# of locations	# of meetings per week
Al-Anon/Alateen	https://al-anon.org	8	8
Alcoholics Anonymous	https://www.aa-iowa.org/	76	72

Recovery meetings data are gathered and cleaned from 13 web-based resources via our data pipeline system. Most of these resources utilize web scraping techniques (in Python by standard requests or packages such as Selenium and BeautifulSoup packages) as well as parsing PDF (Python: PyPDF2 package) files and XLS sheets (Python: csvkit). Table 1 identifies the name of the meeting, web resource, number of locations, and number of meetings per week.

Fig. 10. PSC Meeting Finder Tool - Under the Hood



10.3 PSC Resource Recovery Tool

Interactive Tool:

<http://public-science.org/recoveryresources>

Data updated yearly:

Iowa Office of Drug Control Policy; Wikipedia of Iowa hospitals; Iowa Department of Public Health; Recovery and Resilience Coordinator with AmeriCorpAllTreatment.com; TransitionalHousing.org; WomenSoberHousing.com; Addicted.org; Recovery.org; Drug-rehabs.org; Iowa Association of Rural Health Clinics; U.S. Department of Veterans Affairs

Recovery resources include access centers, drug drop off locations, hospitals, medication assisted treatment locations, mental health centers, peer support providers, recovery housing, rural clinics, SUD and problem gambling treatment locations, and Veterans Affairs health centers. To collect this data, we used a variety of public resources, including government agencies and recovery websites. Our collection of recovery resources is not necessarily exhaustive, but represents the data accessed through our initial effort and following the advice of substance use experts and researchers. This data was acquired through a variety of means, including simple downloads, manual data entry, computer reading of PDF files, and scraping websites. See the table below for the recovery resources data sources.

Table 2. *Recovery Resource Locator Tool Data Sources (Downloaded Sept 2020-May 2021)*

Resource	Data Source	Website Link
Access Centers	Manual Addition	
Drug Drop Off Locations	Iowa Office of Drug Control Policy	https://geodata.iowa.gov/datasets/rx-drop-off-locations-1?geometry=-101.674%2C40.504%2C-84.986%2C43.364
Hospitals	Wikipedia list of Iowa hospitals	https://en.wikipedia.org/wiki/List_of_hospitals_in_Iowa
Medication Assisted Treatment Locations	Iowa Department of Public Health	https://idph.iowa.gov/mat
Mental Health Centers	Iowa Department of Public Health	https://dhs.iowa.gov/sites/default/files/MHDDAccreditedProviders_32.pdf?082320201508
Recovery Housing	AllTreatment.com; TransitionalHousing.org; WomenSoberHousing.com; Addicted.org; Recovery.org; Drug-rehabs.org	AllTreatment.com;TransitionalHousing.org;WomenSoberHousing.com;Addicted.org;Recovery.org;Drug-rehabs.org
Rural Clinics	Iowa Association of Rural Health Clinics	https://iarhc.org/find-a-rural-health-clinic?view=map
SUD and Problem Gambling Treatment Locations	Iowa Department of Public Health	https://idph.iowa.gov/Portals/1/userfiles/166/Licensure/All%20Licensed%20Substance%20Use%20Disorder%20-%20Problem%20Gambling%20Program%27s%20List.pdf
Veterans Affairs Health Centers	U.S. Department of Veterans Affairs	https://www.va.gov/directory/guide/state.asp?STATE=IA&dnum=ALL

10.4 PSC Community Resource Locator Tool

Interactive Tool:

<http://public-science.org/communityresources>

Data updated yearly:

Iowa Department of Human Services; Wikipedia of Iowa colleges; Institute of Museum and Library Services, Public Libraries Survey; MyCountyParks.com; USGS Geographic Names Information System; Iowa Dept of Education; Iowa Workforce Development

Community resources include childcare providers, colleges, libraries, parks, places of worship, K-12 schools, and workforce development centers. To collect this data, we used a variety of public resources, including government agencies and recovery websites. Our collection of community resources is not necessarily exhaustive, but represents the data accessed following the advice of substance use experts and researchers. This data was acquired through a variety of means, including simple downloads, manual data entry, computer reading of PDF files, and scraping websites. See the table below for the community resources data sources.

Table. 3. *Community Resource Locator Tool Data Sources (Downloaded Sept 2020-April 2021)*

Resource	Data Source	Website Link
Childcare Providers	Iowa Department of Human Services	http://ccmis.dhs.state.ia.us/ClientPortal/ProviderLocator.aspx
Colleges	Wikipedia list of Iowa colleges	https://en.wikipedia.org/wiki/List_of_colleges_and_universities_in_Iowa
Public Libraries	Institute of Museum and Library Services	https://www.ims.gov/research-evaluation/data-collection/public-libraries-survey
Parks	MyCountyParks.com	https://www.mycountyparks.com/County/Default.aspx
Places of Worship	USGS Geographic Names Information System	https://data.iowa.gov/Physical-Geography/Iowa-Church-Buildings/juvk-dad9
K-12 Schools	Iowa Department of Education	Public Schools: https://educateiowa.gov/documents/directories/2020/09/2020-21-iowa-public-school-building-directory
		Private Schools: https://educateiowa.gov/documents/directories/2020/09/2020-21-iowa-non-public-school-building-directory
Workforce Development Centers	Iowa Workforce Development	https://www.iowaworkforcedevelopment.gov/contact

10.5 Substance Use Vulnerability Index

Data Tool:

Substance Use Vulnerability Index

Data:

Treatment Episode Data Set-Admission and Discharge (TEDS), 2000-2018 National Survey on Drug Use and Health data (NSDUH), 2015-2019 U.S. Census Bureau American Community 5-year Estimates (ACS), 2015-2019

Geographic ‘hot spots’ of people at risk for substance use disorder were first predicted based on models of administrative data from Treatment Episode Data on admissions (TEDS) and the National Survey of Drug Use and Health (NSDUH) data that assessed significant relationships between key substances and socio-demographic characteristics known to affect health equity and substance use vulnerability (Tables 5-6 results below). Then, the significant predictions of risk for each substance were overlaid with Census Bureau’s American Community Survey 5-year estimates of these population characteristics to provide a visual representation of places with especially high concentrations of people with at-risk characteristics. The Census characteristics described in Table 4 below are reported in Figures 5-8

Table 4. *Substance Use Risk Index using U.S. Census Bureau American Community 5-year Estimates (2015-2019)*

Risk Characteristics	Census Table	Description
Age	B06001	Data table includes population by age categories.
Sex	B01001	Data table includes population by sex.
Poverty Status	S1701_C01	Data table includes poverty status by age bracket and for different income levels.
Marital Status	B12001	Data table includes marital status by sex.
Parental Status	B09002	Data table includes parental and childcare status.

Table 5. *Substance Use Risk Index using TEDS Admission Data*

Risk Characteristics	Alcohol	Cannabis	Meth	Cocaine	Other Opiates	Heroin	Benzos
Age	Older, >35	Young, <35, <25	Middle age	>45	<25	Spikes at both ends	<25
Sex	Male	Male	Female			Male	Female
Race	Black, Hispanic	Black	White	Non-white	Asian, white	Non-white	White
Education		No college	No college	Some college	Some college	Some college	Some college
Poverty	Public Assistance	Public Assistance		Retired/Disabled	Wages/Salary, Retired/Disabled	Wages/Salary, Retired/Disabled	
Employment	Employed	Part time	Unemployed	Employed	Unemployed		Part time
Marital Status			Separated, Divorced, Widowed	Single	Married	Single	
Pop Density	Rural, Micro	Rural, Micro	Micro	Metro	Metro	Metro	Metro, Micro

Table 6. *Substance Use Risk Index using NSDUH Data*

Risk Characteristics	Alcohol	Cannabis	Meth	Cocaine	Other Opiates	Heroin	Benzos
Age	26-34	Young, <35, <25	Middle age	18-34	<50	26-49	18-34
Sex	Male	Male	Male	Male	Male	Male	Male
Race	White	White, Native American	White, Native American	White, Native American	White, Native American	White	White
Education	College	Some college, maybe	No college		No college	No college	
Income	>75,000	<20,000	<40,000	<20,000	<40,000	<20,000	
Employment	Employed	Unemployed	Unemployed	Unemployed	Unemployed	Unemployed	Unemployed
Marital Status	Single, separated	Single	Separated, Divorced	Single	Single	Single	Single
Pop Density	Metro	Metro	Non-metro	Metro	Metro	Metro	Metro

10.6 Social Determinants of Health Index

Data: Social Determinants of Health Index

Data: *U.S. Census Bureau American Community 5-year Estimates (ACS), 2015-2019*

The Social Determinants of Health Index was developed to promote health equity through providing a better understanding of the environments that create and ameliorate the multifactorial risk factors of substance misuse on priority populations. All data for the Substance Use Vulnerability Index comes from the U.S. Census Bureau American Community Survey 5-year estimates (2015-2019). The 5-year pooled dataset represents 60 months of data that enable more precise multi-year estimates. Because many of Iowa’s counties have relatively small populations, the 5-year set of pooled data is the only type of ACS estimates that are available to use across all 99 counties. Following the standards set by *Washington State’s Social Determinants of Health Website* (www.doh.wa.gov/DataandStatisticalReports/HealthDataVisualization/SocialDeterminantsofHealthDashboards/CensusTractSocialDeterminantsofHealth), PSC collected information on the educational attainment level, health insurance coverage, English proficiency, unemployment, and poverty status in each county and then used this information to calculate the average health index for each of Iowa’s 99 counties

Table 7. *Substance Use Risk Index using U.S. Census Bureau American Community 5-year Estimates (2015-2019)*

Risk Characteristics	Census Table	Description
Educational Attainment	S1501	Data table includes educational attainment level for population 25+, by sex.
Health Insurance Coverage	S2701_C05_001	Variable is percent of civilian noninstitutionalized population that is uninsured.
English Proficiency	S1601_C06_001	Variable is percent of population 5+ that speaks English less than very well.
Unemployment, 16+	S2301_C04_001	Variable is percent of population 16+ that is in the labor force, but is unemployed.
Poverty Status	S1701_C01	Data table includes poverty status by age bracket and for different income levels.

The Social Determinants of Health Index was developed to promote health equity through providing a better understanding of the environments that create and ameliorate the multifactorial risk factors of substance misuse on priority populations. All data for the Substance Use Vulnerability Index comes from the U.S. Census Bureau American Community Survey 5-year estimates (2015-2019). The 5-year pooled dataset represents 60 months of data that enable more precise multi-year estimates. Because many of Iowa’s counties have relatively small populations, the 5-year set of pooled data is the only type of ACS estimates that are available to use across all 99 counties. Following the standards set by *Washington State’s Social Determinants of Health Website* (www.doh.wa.gov/DataandStatisticalReports/HealthDataVisualization/SocialDeterminantsofHealthDashboards/CensusTractSocialDeterminantsofHealth), PSC collected information on the educational attainment level, health insurance coverage, English proficiency, unemployment, and poverty status in each county and then used this information to calculate the average health index for each of Iowa’s 99 counties

Appendix 2: Peer Support Contacts in Your Area

Table 8. Appedix 2

Type	Name	Meetings per Week	Meeting Location
AA	500 Club Noon Group	3	410 S 16th St, Council Bluffs, IA 51501, USA
AA	8-80 Group	1	701 S 4th St, Council Bluffs, IA 51503, USA
AA	Alive and Sober	1	410 S 16th St, Council Bluffs, IA 51501, USA
AA	Doing Without Group	1	410 S 16th St, Council Bluffs, IA 51501, USA
AA	Eye Opener	1	410 S 16th St, Council Bluffs, IA 51501, USA
AA	Friday Night Group	1	410 S 16th St, Council Bluffs, IA 51501, USA
AA	Front Room Group	1	410 S 16th St, Council Bluffs, IA 51501, USA
AA	Happy Hour Group	1	200 16th Ave, Council Bluffs, IA 51503, USA
AA	I Want To Work The Steps Group	1	2216 27th Ave, Council Bluffs, IA 51501, USA
AA	Imperfects	1	1800 5th Ave, Council Bluffs, IA 51501, USA
AA	Interstate Group	1	410 S 16th St, Council Bluffs, IA 51501, USA
AA	It's Getting Better	1	410 S 16th St, Council Bluffs, IA 51501, USA
AA	It's Getting Better Group	1	410 S 16th St, Council Bluffs, IA 51501, USA
AA	K.I.S.S 7 PM Tuesday Group	1	410 S 16th St, Council Bluffs, IA 51501, USA
AA	Keep It Simple and Sober Group	1	410 S 16th St, Council Bluffs, IA 51501, USA
AA	Monday Night Group	1	410 S 16th St, Council Bluffs, IA 51501, USA
AA	New Life A.A. Group	1	1435 N 15th St, Council Bluffs, IA 51501, USA
AA	New Life AA	1	714 Benson St, Council Bluffs, IA 51501, USA
AA	New Womens Awareness Group	1	410 S 16th St, Council Bluffs, IA 51501, USA
AA	Primary Purpose Group	1	1500 N 15th St, Council Bluffs, IA 51501, USA
AA	Saturday Morning Group	1	410 S 16th St, Council Bluffs, IA 51501, USA
AA	Saturday Night Group	1	410 S 16th St, Council Bluffs, IA 51501, USA
AA	Seekers Group	1	3112 W Broadway, Council Bluffs, IA 51501, USA
AA	Serenity on Tap	1	410 S 16th St, Council Bluffs, IA 51501, USA
AA	Serenity Sisters	1	410 S 16th St, Council Bluffs, IA 51501, USA
AA	Sober on Sunday	1	410 S 16th St, Council Bluffs, IA 51501, USA
AA	Sunday Morning Big Room Group	1	410 S 16th St, Council Bluffs, IA 51501, USA
AA	The J Gang	1	20794 IA-92, Council Bluffs, IA 51503, USA
AA	Thursday Nite Recovery Group	1	200 16th Ave, Council Bluffs, IA 51503, USA
AA	Thursday Nite Survivors Group	1	410 S 16th St, Council Bluffs, IA 51501, USA
AA	Tuesday Night Group	1	410 S 16th St, Council Bluffs, IA 51501, USA
AA	Wednesday Step Meeting Group	1	410 S 16th St, Council Bluffs, IA 51501, USA
AA	Wednesday Winners Group	1	410 S 16th St, Council Bluffs, IA 51501, USA
AA	Wild Bunch Early Birds Group	1	2658 Avenue A, Council Bluffs, IA 51501, USA
AA	Winners Circle Group	1	701 S 4th St, Council Bluffs, IA 51503, USA
AA	Women's easy does it	1	410 S 16th St, Council Bluffs, IA 51501, USA
AA	You People	1	200 16th Ave, Council Bluffs, IA 51503, USA
	Let It Be	5	200 16th Ave, Council Bluffs, IA 51503, USA
	New Way	1	11 S 1st St, Council Bluffs, IA 51503, USA
	Visions of Hope	2	200 16th Ave, Council Bluffs, IA 51503, USA
	Visions of Hope Group	1	200 16th Ave, Council Bluffs, IA 51503, USA

AlAnon	Building Blocks AFG	1	313 Story St, Council Bluffs, IA 51503, USA
AlAnon	Sunday Morning AFG	1	410 S 16th St, Council Bluffs, IA 51501, USA
AlAnon	Thursday Morning AFG	1	410 S 16th St, Council Bluffs, IA 51501, USA
AlAnon	Wednesday Nite Alive AFG	1	313 Story St, Council Bluffs, IA 51503, USA

Appendix 3: Recovery Resources in Your Area

Table 9. Council Bluffs Recovery Resource Type, Name of Business, and Address of Business

Resource	Name	Address
Drug Drop Off Location	All Care Health Center	902 S Sixth Street, Council Bluffs, Iowa 51501
Drug Drop Off Location	CHI Health Pharmacy	3135 W Broadway, Council Bluffs, Iowa 51501
Drug Drop Off Location	Hy-Vee Drugstore Pharmacy	757 W Broadway, Council Bluffs, Iowa 51501
Drug Drop Off Location	Hy-Vee Pharmacy	1745 Madison Ave, Council Bluffs, Iowa 51503
Drug Drop Off Location	Hy-Vee Pharmacy #1 (1092)	2323 W. Broadway, Council Bluffs, Iowa 51501
Drug Drop Off Location	Pottawattamie County Sheriff's Office	1400 Big Lake Road, Council Bluffs, Iowa 51501
Drug Drop Off Location	Super Saver Pharmacy	1141 North Broadway, Council Bluffs, Iowa 51503
Drug Drop Off Location	Union Pharmacy	235 W. Broadway, Council Bluffs, Iowa 51503
Drug Drop Off Location	Walgreens	2508 West Broadway, Council Bluffs, Iowa 51501
Hospital	CHI Health Mercy Council Bluffs	800 Mercy Dr, Council Bluffs, IA 51503
Hospital	Methodist Jennie Edmundson	933 E Pierce St, Council Bluffs, IA 51503
Medication Assisted Treatment	Bluff Pain Management - Dr. Andrew Huff M.D.	201 Ridge Street, Council Bluffs, IA 51503
Medication Assisted Treatment	Heartland Family Service	705 N. 16th Street, Council Bluffs, IA 51501
Mental Health Center	CHI Health (formerly Alegent Health Psychiatric Associates)	801 Harmony Street, Council Bluffs, IA
Mental Health Center	Family Connections, Inc.	500 Willow Ave., Council Bluffs, IA
Mental Health Center	Focus Family Options and Community Support DBA Iowa Focus	601 Willow Avenue, Council Bluffs, IA
Mental Health Center	Full Circle Therapy Center, LLC	803 3rd Ave, Council Bluffs, IA
Mental Health Center	Heartland Family Services	515 E Broadway, Council Bluffs, IA
Peer Support Provider	Heartland Family Service - Integrated Health Home	120 W Water St., Council Bluffs, IA
Peer Support Provider	Heartland Family Service - Peer Center	622 South 4th Street, Council Bluffs, IA
Peer Support Provider	Heartland Family Service - Mental Health Court	515 East Broadway, Council Bluffs, IA
Recovery Housing	Oxford House Bluffs	725 5th Avenue, Council Bluffs, IA
Recovery Housing	Oxford House Loess Hills	200 South 1st St, Council Bluffs, IA

SUD and Problem Gambling Treatment Location	Alegent Health, Mercy Hospital	801 Harmony Suite 302 Council Bluffs, 51503
SUD and Problem Gambling Treatment Location	Heartland Family Service Family Service Chemical Dependency Program	515 E. Broadway Council Bluffs, 51503 Family Works: 1722 Avenue C Council Bluffs, 51503 Family Service Chemical Dep. Program 2101 S. 42nd Street Omaha, NE 68144

Appendix 4: Community Resources in Your Area

Table 10. Council Bluffs Community Resource Type, Name of Business, and Address of Business

Resource	Name	Address
Childcare Provider	A Mother's Touch Day Care and Preschool	3657 Avenue G, Council Bluffs, IA 51501
Childcare Provider	A-Z Early Learning Center	528 Woodbury Ave, Council Bluffs, IA 51503
Childcare Provider	Etta Henderson	4015 Ave D, Council Bluffs, IA 51501
Childcare Provider	Hannah Hotz	745 Perrin Ave, Council Bluffs, IA 51503
Childcare Provider	Heartland Child Development Center	710 First Ave, Council Bluffs, IA 51501
Childcare Provider	Heartland Christian School	400 Wright Road, Council Bluffs, IA 51501
Childcare Provider	Heather Neighbors	1626 Avenue I, Council Bluffs, IA 51501
Childcare Provider	Noilly Cubillo Montoya	3208 12th Ave, Council Bluffs, IA 51501
Childcare Provider	Norma Oles	2027 4th Ave, Council Bluffs, IA 51501
Childcare Provider	Patricia Duysen	802 Ave C, Council Bluffs, IA 51503
Childcare Provider	Patricia Newberry	2516 Ave G, Council Bluffs, IA 51501
Childcare Provider	Raven Walker	220 Wendy Heights Rd, Council Bluffs, IA 51503
Childcare Provider	Aileen Eatherton	4030 Ramelle Dr, Council Bluffs, IA 51501
Childcare Provider	Amanda Christo	2709 Ave G, Council Bluffs, IA 51501
Childcare Provider	Amber Durand	4025 Wakeman Dr, Council Bluffs, IA 51501
Childcare Provider	April Pelander	2403 Ave A, Council Bluffs, IA 51501
Childcare Provider	Helena Owens	1113 4th Ave, Council Bluffs, IA 51501
Childcare Provider	Hilary Beckner	2119 2nd Ave, Council Bluffs, IA 51501
Childcare Provider	Hilltop Child Development Center	16996 State Orchard Rd, Council Bluffs, IA 51503
Childcare Provider	Iowa Western Early Childhood Educ Ctr	2700 College Rd, Council Bluffs, IA 51502
Childcare Provider	Iuliia Iachtchenko	4501 North Shore Dr, Council Bluffs, IA 51501
Childcare Provider	Jenelle Boulware and Marsha Tenorio	1615 Madison Ave, Council Bluffs, IA 51503
Childcare Provider	Jennie's House Child Development Center, LLC	933 E Pierce St, Council Bluffs, IA 51503
Childcare Provider	Jennifer Cash	173 15th Ave, Council Bluffs, IA 51503
Childcare Provider	Jennifer ODell	3012 Ave E, Council Bluffs, IA 51501
Childcare Provider	Jessi Scott	611 Wilson Ave, Council Bluffs, IA 51503
Childcare Provider	Jessica Turner	525 S 1st St, Council Bluffs, IA 51503
Childcare Provider	Jill Frampton	651 Spencer Ave, Council Bluffs, IA 51503
Childcare Provider	Renee Rea	3623 2nd Ave, Council Bluffs, IA 51501
Childcare Provider	Rhonda Alvarado and LeoPoldo Avarado-Hernandez	1529 6th Ave, Council Bluffs, IA 51501
Childcare Provider	Rhonda Rochholz	215 S 9th St, Council Bluffs, IA 51501
Childcare Provider	Shannon Williams	615 Benton St, Council Bluffs, IA 51503
Childcare Provider	Shea's Learning Days Child Development Center LLC	2308 Ave J, Council Bluffs, IA 51501
Childcare Provider	Ashlee Belt	920 S 36th St, Council Bluffs, IA 51501
Childcare Provider	Barbara Patrick and Charles Patrick	3006 Margaret Ave, Council Bluffs, IA 51501
Childcare Provider	Beginning Memories Preschool	2102 Avenue E, Council Bluffs, IA 51501
Childcare Provider	Joanne Buckles	1115 27th Ave, Council Bluffs, IA 51501
Childcare Provider	Jody Bascue	307 Grace St, Council Bluffs, IA 51503

Childcare Provider	Julie Christensen	3014 Bel Air Dr, Council Bluffs, IA 51501
Childcare Provider	Julie Petry	19250 Mynster Springs Rd, Council Bluffs, IA 51503
Childcare Provider	Jumping Monkeys Childcare Inc.	7 S 4th St, Council Bluffs, IA 51503
Childcare Provider	Keeley Mabbitt	2806 Summner Dr, Council Bluffs, IA 51501
Childcare Provider	Kelsey Williams	174 Greenhaven Rd, Council Bluffs, IA 51503
Childcare Provider	Kerry Houchin	3540 Ave E, Council Bluffs, IA 51501
Childcare Provider	Kids and Company-Bloomer	210 S 7th St, Council Bluffs, IA 51501
Childcare Provider	Kids and Company-College View	1225 College Road, Council Bluffs, IA 51503
Childcare Provider	Kids and Company-Crescent	402 E Welch St, Council Bluffs, IA 51526
Childcare Provider	Kids and Company-Edison	2218 Third Ave, Council Bluffs, IA 51501
Childcare Provider	Kids and Company-Franklin	3130 Avenue C, Council Bluffs, IA 51501
Childcare Provider	Kids and Company-Hoover	1205 N Broadway, Council Bluffs, IA 51503
Childcare Provider	Kids and Company-Lewis and Clark	1603 Grand Ave, Council Bluffs, IA 51503
Childcare Provider	Kids and Company-Longfellow	2011 S 10th St, Council Bluffs, IA 51501
Childcare Provider	Kids and Company-Roosevelt	517 N 17th St, Council Bluffs, IA 51501
Childcare Provider	Kids and Company-Rue Elementary	3326 6th Ave, Council Bluffs, IA 51501
Childcare Provider	Kids and Company-Wilson Junior High	715 N 21st St, Council Bluffs, IA 51501
Childcare Provider	Sheryl K Johnson Child Care Center	400 Gleason Avenue, Council Bluffs, IA 51503
Childcare Provider	St Paul's Lutheran Early Childhood Center	1500 N 16th St, Council Bluffs, IA 51501
Childcare Provider	Stacey Gunter	1700 9th Ave, Council Bluffs, IA 51501
Childcare Provider	Stacy Socha	447 Park Ave, Council Bluffs, IA 51503
Childcare Provider	Susan St Cyr	648 Arnold Ave, Council Bluffs, IA 51503
Childcare Provider	Suzanne Wilson	3602 Katie Dr, Council Bluffs, IA 51501
Childcare Provider	Carmen Drefs	2018 1/2 Ave D, Council Bluffs, IA 51503
Childcare Provider	Carolyn Klahn	817 5th Ave, Council Bluffs, IA 51501
Childcare Provider	Children's Center	714 Avenue D, Council Bluffs, IA 51502
Childcare Provider	Children's Choice	3501 Harry Langdon Blvd #180, Council Bluffs, IA 51503
Childcare Provider	College View Elementary	1225 College Rd, Council Bluffs, IA 51503
Childcare Provider	Council Bluffs I, II, III Head Start	765 Madison Ave, Council Bluffs, IA 51503
Childcare Provider	Kitty Whisinnand	3007 Twin City Dr, Council Bluffs, IA 51501
Childcare Provider	Kristie Elliff	3002 9th Ave, Council Bluffs, IA 51501
Childcare Provider	Kristie Reel	1930 S 6th St, Council Bluffs, IA 51501
Childcare Provider	Leon's Childcare LLC	1608 15th Ave, Council Bluffs, IA 51501
Childcare Provider	Lewis Central Lucky Children	4125 Harry Langdon Blvd, Council Bluffs, IA 51503
Childcare Provider	Linda Gwennap-Kolhof	3244 Ave K, Council Bluffs, IA 51501
Childcare Provider	Teresa Young	1014 N Broadway, Council Bluffs, IA 51503
Childcare Provider	The Learning Journey	15111 214th St, Council Bluffs, IA 51503
Childcare Provider	The Learning Journey II	17544 Sunnysdale Rd, Council Bluffs, IA 51503
Childcare Provider	Tina Christensen	202 Happy Hollow Cir, Council Bluffs, IA 51503
Childcare Provider	Tracy Byrd	2312 Ave E, Council Bluffs, IA 51501
Childcare Provider	Trudi Robinson and Anthony Robinson	3901 Twin City Dr, Council Bluffs, IA 51501
Childcare Provider	Crystal Hammers	1739 Ave B, Council Bluffs, IA 51501

Childcare Provider	Cuddly Care	605 S 21st St, Council Bluffs, IA 51501
Childcare Provider	Dana Rief	20270 Perry Rd, Council Bluffs, IA 51503
Childcare Provider	Darla Johnson	611 Simms Ave, Council Bluffs, IA 51503
Childcare Provider	Dawn Rice	21496 Chestnut Rd, Council Bluffs, IA 51503
Childcare Provider	Dees Daycare LLC	3501 Ave B, Council Bluffs, IA 51501
Childcare Provider	Dorothy Binau	125 Ashland Ct, Council Bluffs, IA 51503
Childcare Provider	Mary's Little Lambs, LLC	1625 Madison Ave, Council Bluffs, IA 51503
Childcare Provider	Marybeth Vasser and Laurel Nelson	1616 3rd Ave, Council Bluffs, IA 51501
Childcare Provider	Melisa Jones	505 S 21st St, Council Bluffs, IA 51501
Childcare Provider	Melissa and Larry Williams	526 S 4th St, Council Bluffs, IA 51503
Childcare Provider	Melissa Svenningsen	505 N 35th St, Council Bluffs, IA 51501
Childcare Provider	Mom's House Child Care Center	3303 Harry Langdon Blvd, Council Bluffs, IA 51503
Childcare Provider	Montessori Children's House	400 Cloverdale Dr, Council Bluffs, IA 51503
Childcare Provider	Mother Goose Child Care and Preschool Site II	107 N 22nd St, Council Bluffs, IA 51501
Childcare Provider	Mother Goose Child Care and Preschool Site III	108 N 22nd St, Council Bluffs, IA 51501
Childcare Provider	Little Fry LLC	3020 Ave M, Council Bluffs, IA 51501
Childcare Provider	Little Hands at Work and Play	205 S 27th St, Council Bluffs, IA 51501
Childcare Provider	Little Mother Hen Daycare	101 Wildwood Rd, Council Bluffs, IA 51503
Childcare Provider	Love Kids Child Care Center LLC	901 N 35th St Bldg 8 Ste 201, Council Bluffs, IA 51501
Childcare Provider	Madison Early Head Start	755 Madison Avenue, Council Bluffs, IA 51503
Childcare Provider	YMCA Early Learning Center - Charles E Lakin	235 Harmony St, Council Bluffs, IA 51503
College	Iowa Western Community College	Iowa Western Community College, Council Bluffs, IA
Family Support Specialists	Children's Square - Integrated Health Home	520 N 7th Street, Council Bluffs, IA
Library	Council Bluffs Public Library	400 Willow Ave, Council Bluffs, IA 51503
Park	Narrows River Park	2500 N 25th St, Council Bluffs, IA 51501
Park	Pottawattamie County Conservation Office	223 S 6th St, Council Bluffs, IA 51501
Place of Worship	First Congregational Church	611 1st Ave, Council Bluffs, IA 51501
Place of Worship	B'Nai Israel Synagogue	618 Mynster St, Council Bluffs, IA 51503
Place of Worship	Light of the Word Church	Council Bluffs, IA 51501
Place of Worship	Emanuel Lutheran Church	2444 N Broadway, Council Bluffs, IA 51503
Place of Worship	Fifth Avenue United Methodist Church	1800 5th Ave, Council Bluffs, IA 51501
Place of Worship	Jehovahs Witnesses	2601 S 10th St, Council Bluffs, IA 51501
Place of Worship	Gethsemane Presbyterian Church	224 Wallace Ave, Council Bluffs, IA 51501
Place of Worship	Saint Mary and Saint George Coptic Orthodox Church	106 W Kaneshville Blvd, Council Bluffs, IA 51503
Place of Worship	Harvest Temple Church of God	Council Bluffs, IA 51501
Place of Worship	Saint Pauls Episcopal Church	22 Dillman Dr, Council Bluffs, IA 51503
Place of Worship	Pentecostal House of Prayer	2801 5th Ave, Council Bluffs, IA 51501
Place of Worship	Broadway United Methodist Church	11 S 1st St, Council Bluffs, IA 51503
Place of Worship	Saint Pauls Lutheran Church	239 Frank St, Council Bluffs, IA 51503
Place of Worship	Southside Christian Church	1919 S 10th St, Council Bluffs, IA 51501
Place of Worship	Baha'i Faith Church	Council Bluffs, IA 51503
Place of Worship	Christian Worship Center	1435 N 15th St, Council Bluffs, IA 51501

Place of Worship	First Baptist Church	540 1st Ave, Council Bluffs, IA 51503
Place of Worship	Valley View Church	30 Valley View Dr, Council Bluffs, IA 51503
Place of Worship	Calvary Assembly of God Church	2022 8th Ave, Council Bluffs, IA 51501
Place of Worship	Victory Fellowship Pentecostal Church of God	2111 23rd Ave, Council Bluffs, IA 51501
Place of Worship	El Bethel Assembly of God Church	1624 Avenue D, Council Bluffs, IA 51501
Place of Worship	Grace Presbyterian Church	30 Valley View Dr, Council Bluffs, IA 51503
Place of Worship	First Presbyterian Church	Council Bluffs, IA 51501
Place of Worship	Reorganized Church of Jesus Christ of Latter Day Saints - Central Congregation	140 W Kanesville Blvd, Council Bluffs, IA 51503
Place of Worship	Seventh Day Adventist Church	142 Valley View Dr, Council Bluffs, IA 51503
Place of Worship	East Side Christian Church	331 Bennett Ave W, Council Bluffs, IA 51503
Place of Worship	Bethany Presbyterian Church	1900 S 7th St, Council Bluffs, IA 51501
Place of Worship	Sherwood Church	2335 Sherwood Dr, Council Bluffs, IA 51503
Place of Worship	Council Bluffs Gospel Assembly Church	2022 8th Ave, Council Bluffs, IA 51501
Place of Worship	Twin Cities Church	4220 Gifford Rd, Council Bluffs, IA 51501
Place of Worship	Changing Hearts Church	2109 Railroad Hwy, Council Bluffs, IA 51503
Place of Worship	Redeemer Evangelical Lutheran Church	Council Bluffs, IA 51501
Place of Worship	Holy Family Church	2217 Avenue B, Council Bluffs, IA 51501
Place of Worship	First Church of Christ Scientist	Council Bluffs, IA 51501
Place of Worship	Our Saviors Lutheran Church	313 Story St, Council Bluffs, IA 51503
Place of Worship	Saint Patricks Catholic Church	4 Valley View Dr, Council Bluffs, IA 51503
Place of Worship	Lighthouse Temple Church of the Open Bible	1430 Avenue E, Council Bluffs, IA 51501
Place of Worship	Midwest Church of God	Council Bluffs, IA 51501
Place of Worship	Council Bluffs Bible Chapel	1525 Mcpherson Ave, Council Bluffs, IA 51503
Place of Worship	Mount Zion Refuge Church	3031 7th Ave, Council Bluffs, IA 51501
Place of Worship	Calvary Baptist Church	Council Bluffs, IA 51501
Place of Worship	Central Baptist Church	16996 State Orchard Rd, Council Bluffs, IA 51503
Place of Worship	Emanuel Church of the Nazarene	2309 S 13th St, Council Bluffs, IA 51501
Place of Worship	Tabernacle Baptist Church	1400 Avenue A, Council Bluffs, IA 51501
Place of Worship	Saint Peters Church	1 Bluff St, Council Bluffs, IA 51503
Place of Worship	Saint Marks Church	Council Bluffs, IA 51503
Place of Worship	Deaf Missions Church	21199 Greenview Rd, Council Bluffs, IA 51503
Place of Worship	First Assembly of God Church	3320 Harry Langdon Blvd #7856, Council Bluffs, IA 51501
Place of Worship	Heartland District Pentecostal Church of God	Council Bluffs, IA 51501
Place of Worship	Southview Bible Church	2007 S 7th St, Council Bluffs, IA 51501
Place of Worship	Epworth United Methodist Church	2447 Avenue B, Council Bluffs, IA 51501
Place of Worship	Faith Lutheran Church	2100 S 11th St, Council Bluffs, IA 51501
Place of Worship	Saint John Lutheran Church	633 Willow Ave, Council Bluffs, IA 51501
Place of Worship	Saint Johns United Church of Christ	400 Cloverdale Dr, Council Bluffs, IA 51503
Place of Worship	Saint John's United Church of Christ	400 Cloverdale Dr, Council Bluffs, IA 51503

School (K-12)	Thomas Jefferson High School	2501 W Broadway, Council Bluffs, IA 51501-3595
School (K-12)	Abraham Lincoln High School	1205 Bonham Ave, Council Bluffs, IA 51503
School (K-12)	Gerald W Kirn Middle School	100 North Ave, Council Bluffs, IA 51503
School (K-12)	Woodrow Wilson Middle School	712 N 21st St, Council Bluffs, IA 51501-0902
School (K-12)	Bloomer Elementary School	210 S 7th Street, Council Bluffs, IA 51501
School (K-12)	College View Elementary	1225 College Road, Council Bluffs, IA 51503
School (K-12)	Edison Elementary School	2218 3rd Avenue, Council Bluffs, IA 51501
School (K-12)	Franklin Elementary School	3130 Ave C, Council Bluffs, IA 51501
School (K-12)	Hoover Elementary School	1205 North Broadway, Council Bluffs, IA 51503
School (K-12)	Lewis and Clark Elementary School	1603 Grand Ave, Council Bluffs, IA 51503
School (K-12)	Longfellow Elementary School	2011 S 10th St, Council Bluffs, IA 51501
School (K-12)	Roosevelt Elementary School	517 N 17th St, Council Bluffs, IA 51501
School (K-12)	Rue Elementary School	3326 6th Avenue, Council Bluffs, IA 51501
School (K-12)	Lewis Central Senior High School	3504 Harry Langdon Blvd., Council Bluffs, IA 51503
School (K-12)	Lewis Central Middle School	3820 Harry Langdon Blvd., Council Bluffs, IA 51503
School (K-12)	E A Kreft Primary School	3206 Renner Dr., Council Bluffs, IA 51501
School (K-12)	Titan Hill Intermediate School	4125 Harry Langdon Blvd., Council Bluffs, IA 51503
School (K-12)	Saint Albert School	400 Gleason Ave, Council Bluffs, IA 51503
School (K-12)	OneSchool Global - Council Bluffs	525 Woodbury Ave, Council Bluffs, IA 51503
School (K-12)	Heartland Christian School	400 Wright Rd, Council Bluffs, IA 51501
Workforce Development Center	Council Bluffs IowaWORKS Office	Omni Centr<e9> Business Mall, 300 W Broadway, Suite 13,council Bluffs,ia,51503