



# Recovery Iowa - Cedar Rapids 360

*August, 2022*



Report provided to the Iowa Department of Public Health

---

*This project was supported by the Iowa Department of Public Health, Bureau of Substance Abuse (IDPH) via a sub-ward from the Substance Abuse and Mental Health Services (SAMHSA) of the U.S. Department of Health and Human Services (HHS) as part of a financial assistance award totaling 350,000 with 100 percent funded by SAMHSA/HHS. The contents are those of the author(s) and do not necessarily represent the official views of, nor an endorsement by, IDPH, SMHSA/HHS, or the U.S. Government*



## Contents

<b>1 Overview</b>	<b>3</b>
<b>2 What is Recovery?</b>	<b>3</b>
<b>3 What is a Recovery Community Center?</b>	<b>3</b>
<b>4 Is Your Community Recovery Ready?</b>	<b>4</b>
<b>5 What Peer Support Meetings are Available in Your Area?</b>	<b>5</b>
<b>6 What Recovery Resources Are Available in Your Area?</b>	<b>6</b>
<b>7 What Community Resources Are Available in Your Area?</b>	<b>7</b>
<b>8 Which Neighborhoods in Your Community Need Additional Health Resources and Support?</b>	<b>8</b>
<b>9 What's Driving Health Disparities in Your Community?</b>	<b>11</b>
<b>10 APPENDIX 1: Data Used in this Report</b>	<b>12</b>
10.1 Recovery Ready Community Index (RRCI)	12
10.2 PSC Meeting Finder Tool	12
10.3 PSC Resource Recovery Tool	14
10.4 PSC Community Resource Locator Tool	15
10.5 Substance Use Vulnerability Index	16
10.6 Social Determinants of Health Index	18
<b>11 Appendix 2: Peer Support Contacts in Your Area</b>	<b>19</b>
<b>12 Appendix 3: Recovery Resources in Your Area</b>	<b>21</b>
<b>13 Appendix 4: Community Resources in Your Area</b>	<b>24</b>

---

## Overview

---

At the request of the Iowa Department of Public Health, Bureau of Substance Abuse, the Public Science Collaborative (PSC) developed community-specific reports to support recovery efforts in Iowa. Recognizing the need to strengthen substance use recovery efforts throughout the state, we identified a large number of existing recovery-oriented resources in Cedar Rapids, which we describe and map in the pages that follow. We developed additional maps to identify at-risk neighborhoods that will benefit from targeted health interventions and additional community resources. For additional questions or information about this report, the data tools described, or the Public Science Collaborative, please reach out to the principal investigators of this study, Dr. Shawn Dorius at sdorius@iastate.edu, or Dr. Cassandra Dorius at cdorius@iastate.edu.

---

## What is Recovery?

---

Though substance use recovery is an evolving concept that has been defined in a number of ways over the years, an emerging consensus is that recovery is a voluntary path toward improved personal well-being coupled with a diminished risk of substance use relapse. As noted by Bill White (2007):

*Recovery is the experience through which individuals, families, and communities impacted by severe alcohol and other drug (AOD) problems utilize internal and external resources to voluntarily resolve these problems, heal the wounds inflicted by AOD related problems, actively manage their continued vulnerability to such problems, and develop a healthy, productive, and meaningful life.*

In White's view, resources help individuals, families, and communities in two ways. First, they help address alcohol and other drug-related problems (for example, addiction, unemployment, housing instability, family separation), and second, they support health, productivity, and meaning in post-treatment life. The appeal of this view is that it is explicit and direct in its recognition that recovery involves not only internal resources such as mental, emotional, and genetic factors but also external ones. In thinking about where to focus federal and state resources to develop a network of community-based recovery centers in Iowa, the key question is, "What kinds of external resources matter most for sustained SUD recovery?"

*If we knew which resources were most helpful to long-run recovery, we could target towns and cities with large stocks of 'recovery resources' to grow Recovery Community Centers*

---

## What is a Recovery Community Center?

---

**Recovery Community Centers (RCCs)** represent low-cost, member-driven, voluntarist, locally managed, and community-engaged pathways to sustainable recovery for people with substance use disorder, or SUD. RCCs accomplish these goals by linking people to existing resources and infrastructure and promoting a vibrant recovery culture based in a **physical community center where people in recovery can visit, engage with others in recovery, and access resources**. RCCs are an innovative, safe, and helpful source of community recovery support that provides linkages to existing local services and resources that support recovery for people with a substance use or mental health disorder. RCCs support recovery by helping people in the community who have a history of substance use to develop recovery capital, the personal resources that enable people to live healthy, productive, and community engaged lives. RCCs do this by connecting members of the recovery community, called peers, with different types of services such as recovery coaching, medication assisted treatment, connection to employment services and child care, recovery-oriented housing, or education and workforce development training services. Located in the heart of the community, Recovery Community Centers improve the ability of the local recovery community to care for one another, and they also help destigmatize the lives of people in recovery.

The RCC model of recovery is validated by academic studies and is promoted by both the SUD community and public health officials. However, finding the right communities for RCC development in Iowa has proven difficult, underscoring the fact that Iowa is one of just a few states in the U.S. that has yet to adopt the recovery community model.

## Is Your Community Recovery Ready?

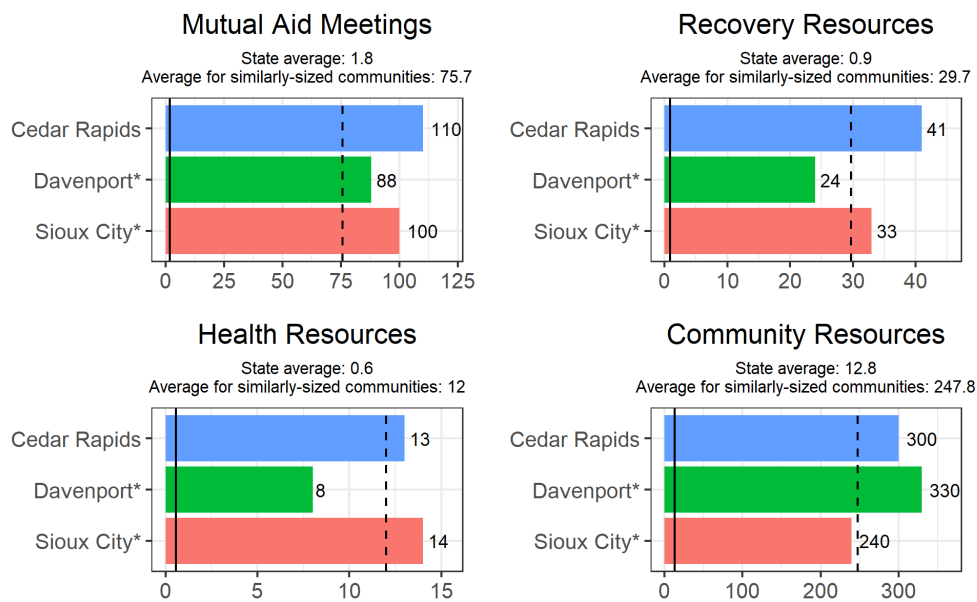
What is the RRCI and how was it created? We consulted scientific literature on substance use recovery and engaged key stakeholders who work directly with people in recovery around the country and in Iowa. This helped us to identify 17 unique community-based resources that we collected for almost all of Iowa’s 944 cities and towns. In total, we found nearly 16,000 community features that support recovery. We mapped and analyzed these resources so we could identify a short list of ‘Recovery Ready’ communities across the state, culminating in the first-of-its-kind index: **The Recovery Ready Community Index (RRCI)**.

The RRCI encompasses four dimensions: breadth, depth, size, and strength. Breadth of recovery resources was measured by counting the number of different types of recovery resources in each county and community. For example, counting if there is at least one hospital, one treatment center, and one drug drop off location in town. Depth of recovery resources was measured by first counting the total number of resources in each category and then ranking cities accordingly. This gives added importance to places that have, for example, more than one medication assisted treatment provider and many different recovery houses in town. Size of local recovery culture was measured by the total number of weekly mutual aid and peer support meetings per week in each city (e.g. total number of NA and AA meetings). Finally, the strength of the recovery community was measured as the difference between the total number of weekly peer support meetings and the number of meetings expected, based upon the total population of each town. These four dimensions were used to create the Recovery Ready Community Index. The RRCI is the simple average of each town’s ranking across the four dimensions or recovery readiness. Places that ranked high on all four dimensions are labeled as especially recovery ready.

*How recovery ready is your community? Are you well-positioned to support a Recovery Community Center in your community?* Relative to all cities, Cedar Rapids ranks low in terms of its recovery readiness. **According to the Recovery Ready Community Index (RRCI), Cedar Rapids scored 35.75, placing it at 15th when compared with other Iowa cities** (Iowa’s RRCI state average is 32.7).

Another way to understand recovery resources in Cedar Rapids is to compare them with those of the state average and other communities of similar size. This comparison is displayed in Figure 1, which compares Cedar Rapids with Davenport and Sioux City. An average across all Iowa towns as well as the subset having a comparable population level are also included as a baseline for comparison.

**Fig. 1.** Recovery Ready Community Index: Comparison of Cedar Rapids to Other Iowa Communities on ‘Recovery Readiness’



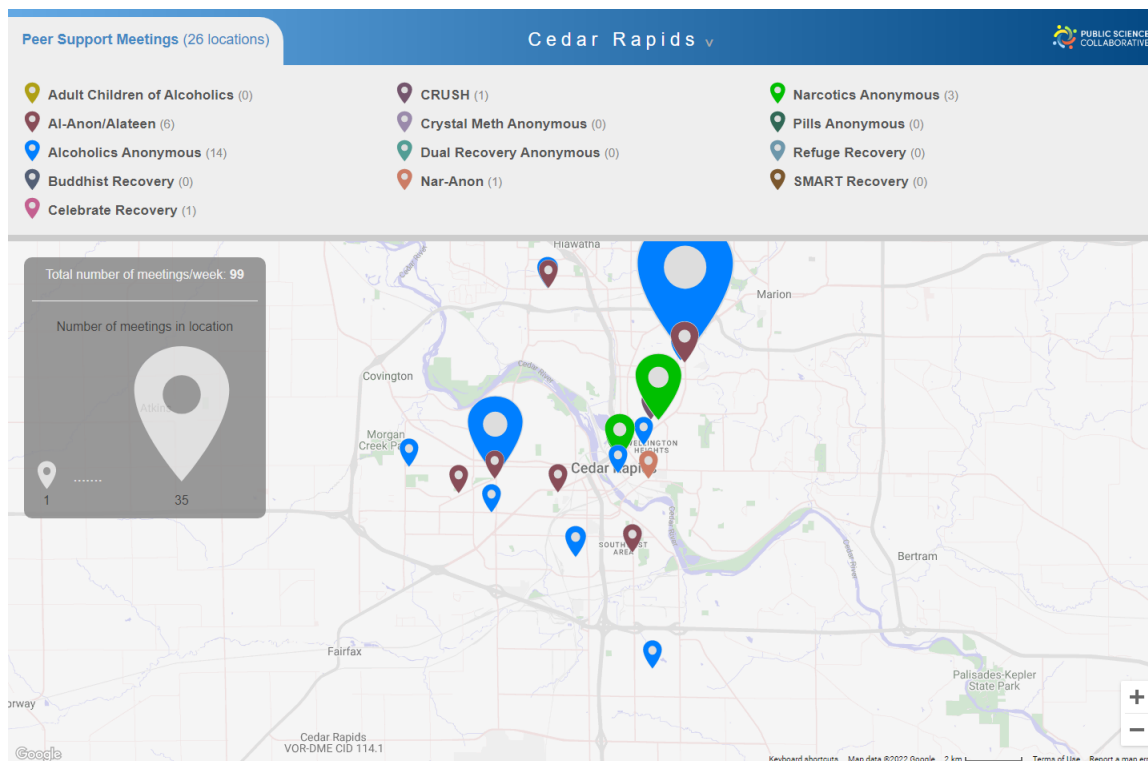
\* The Iowa cities most comparable to Cedar Rapids by population are Davenport and Sioux City.

\*\* The solid vertical line represents the average for all 944 communities in Iowa and the dashed vertical line represents the average for Iowa communities with populations of more than 50,000 people.

## What Peer Support Meetings are Available in Your Area?

Recovery meetings, such as Alcoholics and Narcotics Anonymous, play a significant role in facilitating the recovery process. Despite the importance of these meetings there is no coherent ‘one stop shop’ to find the meeting you need, when you need it. People usually need to go through several steps, such as searching for meetings on Google, or looking for a specific meeting time or place on a local listings’ website. It can be hard enough to connect with peer support during the best of times, but doubly difficult when you are in crisis and questioning your recovery. Magnifying the challenge of finding the right meeting at the right time is being new to a community, unfamiliar with the members of a local meeting, and being in a moment of duress.

**Fig. 2.** Peer Support Meetings in Cedar Rapids



Note: Larger markers indicate the locations that host more than one meeting per week. For example, in Cedar Rapids there are 107 total meetings hosted each week in the locations identified above.

We developed the PSC Meeting Finder tool above to make it easier to find local meetings. We do this by presenting a map-based list of meetings all throughout Iowa and we update the map every single day. It’s a simple interface that helps people to find the appropriate meetings nearby, right now. Users can filter meetings by time of day, day of week, or whether childcare is available, for example, to find the right meeting at the right time. Having a responsive design, PSC Meeting Finder Tool runs efficiently and quickly on many different kinds of computers and mobile devices such as smartphones. Figure 2 is a screen capture of the PSC Meeting Finder where you can see the location of all known peer support meetings in your community. A web version of this map is available at: <http://public-science.org/reportmaps/meetings/?city=Cedar%20Rapids>. Note that the peer support data is updated regularly and may not exactly match Figure 2. A full listing of these resources is provided as a table with meeting, type, group name, number of meetings per week, and location of meetings in Appendix 2.

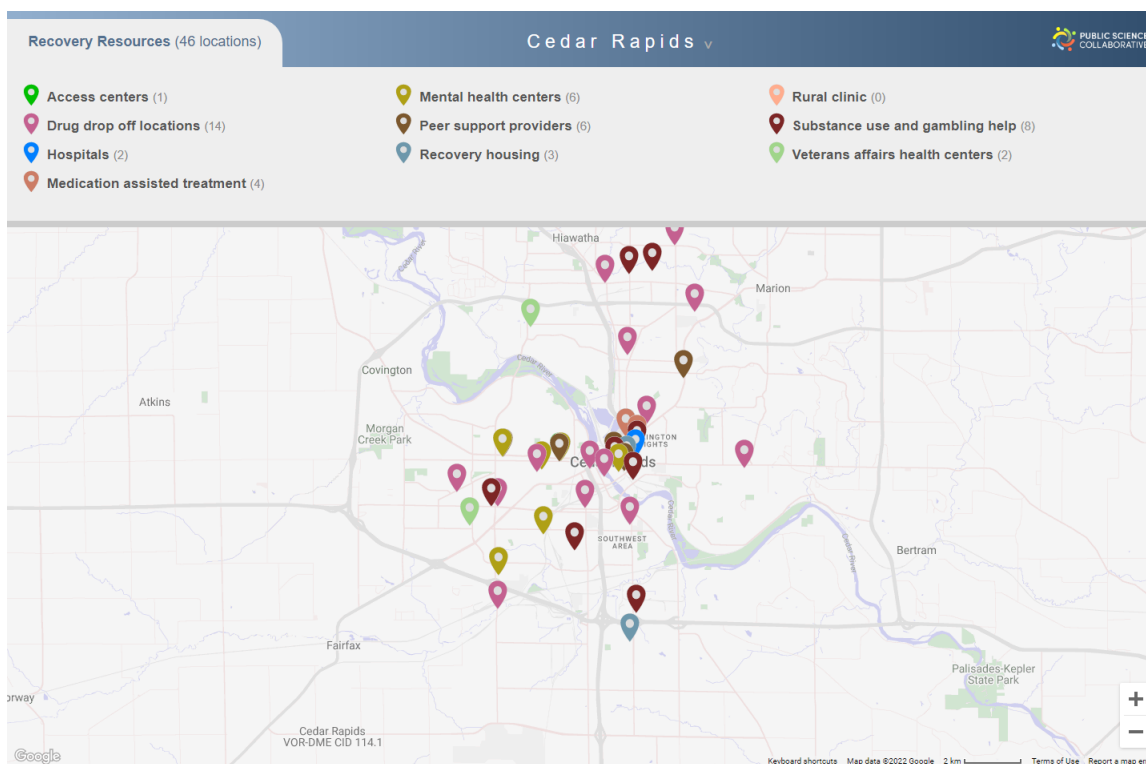
Cedar Rapids has about 107 peer support meeting locations in a given week. Figure 2. indicates the location of these meetings as well as locations where there are few or no weekly meetings, which may help local peer support groups to identify new places to sponsor a meeting and support local recovery. The number of meetings held by each group is tabulated in the top panel of this figure indicating the prominence of different peer support organizations in the community.

## What Recovery Resources Are Available in Your Area?

Despite their importance, community-based recovery resources can be hard to find. Whether a person is new to the community or a long-term resident, some resources remain unknown to many people in the community. The PSC Recovery Resource Locator aims to help solve this problem. Figure 3 is a screen capture of the PSC Recovery Resource Locator where you can see the location of some of the resources your community offers to its recovery community. A web version of this map is available at: <http://public-science.org/reportmaps/recoveryresources/?city=Cedar%20Rapids>. A full listing of these resources is provided as a table with resource name, type, and location in Appendix 3.

Cedar Rapids has 54 recovery resources available to support its residents in recovery from substance use disorders. These resources provide a variety of services and care to respond to the needs of individuals in the community. Drug drop off locations allow individuals to dispose of their unneeded prescription drugs to limit abuse of these substances. Medication assisted therapy helps alleviate withdrawal symptoms for individuals in recovery. Mental health resources are also an important resource in helping treat mental health challenges associated with SUD. Mutual aid and recovery housing groups are designed to provide a community of support to help address the material needs of people using substances. Finally, SUD treatment facilities and Veterans Affairs health clinics provide medical care to individuals using substances. These resources and others like them are tabulated in the top panel of Figure 3 to provide insight into strong and weak areas in community recovery resources.

**Fig. 3.** Recovery Resources in Cedar Rapids



---

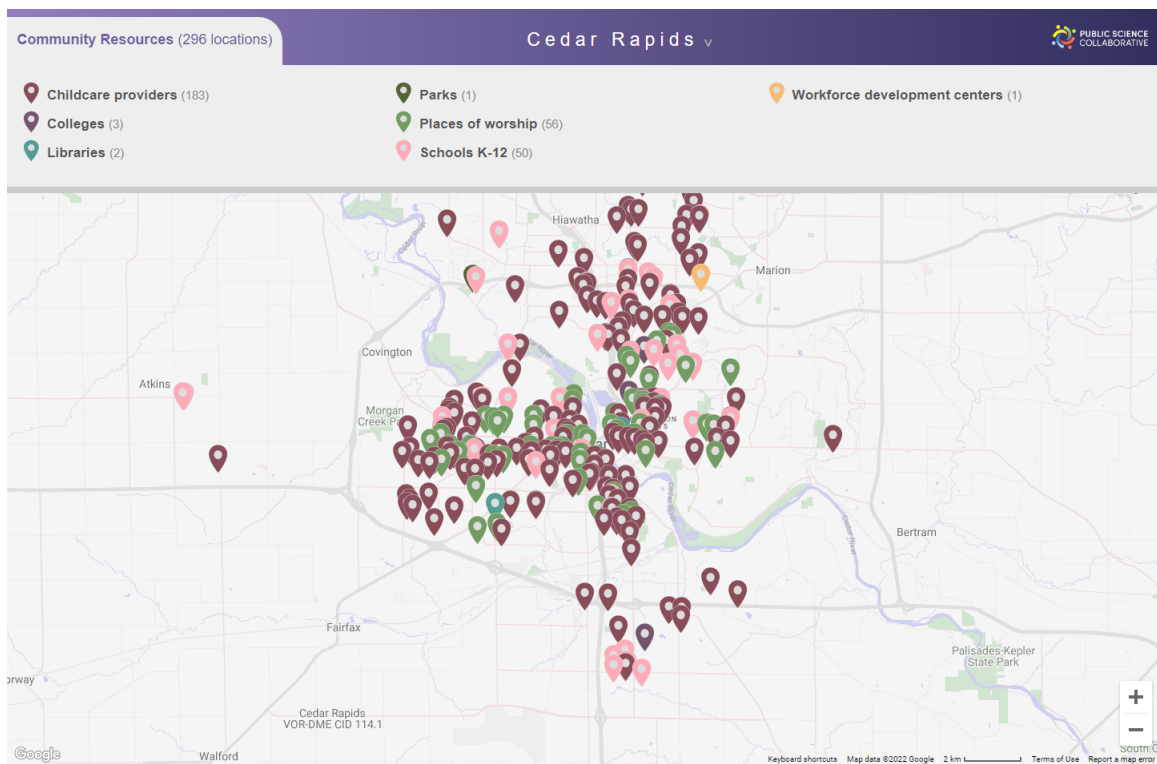
## What Community Resources Are Available in Your Area?

---

In addition to peer support meetings and clinical care, people in recovery benefit from other community resources. For example, having easy access to parks and natural areas has been shown to support substance use recovery. Participation in community groups, including religious organizations, may be a source of strength and support for many people in recovery. We have identified many additional community assets that can help people in their own recovery journey. The state of Iowa has a wide range of public and private institutions and organizations dedicated to providing health and human services, support, and activities to improve quality of life and well-being of all Iowans. The PSC Community Resource Locator is a utility for discovering many of these resources. Figure 4 is a screen capture of the PSC Community Resource Locator where you can see the location of some of the resources your community offers to its recovery community. A web version of this map is available at: <http://public-science.org/reportmaps/communityresources/?city=Cedar%20Rapids>. A full listing of these resources is provided as a table with resource name, type, and location in Appendix 4.

Cedar Rapids has 303 community resources available for its residents to live their best lives and to support those in recovery from substance use disorders. These may include childcare providers, universities and technical colleges, libraries, parks, places of worship, K-12 schools, and workforce development centers. The number of each type of resource is broken down in Figure 4., highlighting areas of success and areas for growth in your community.

**Fig. 4.** *Community Resources in Cedar Rapids*



---

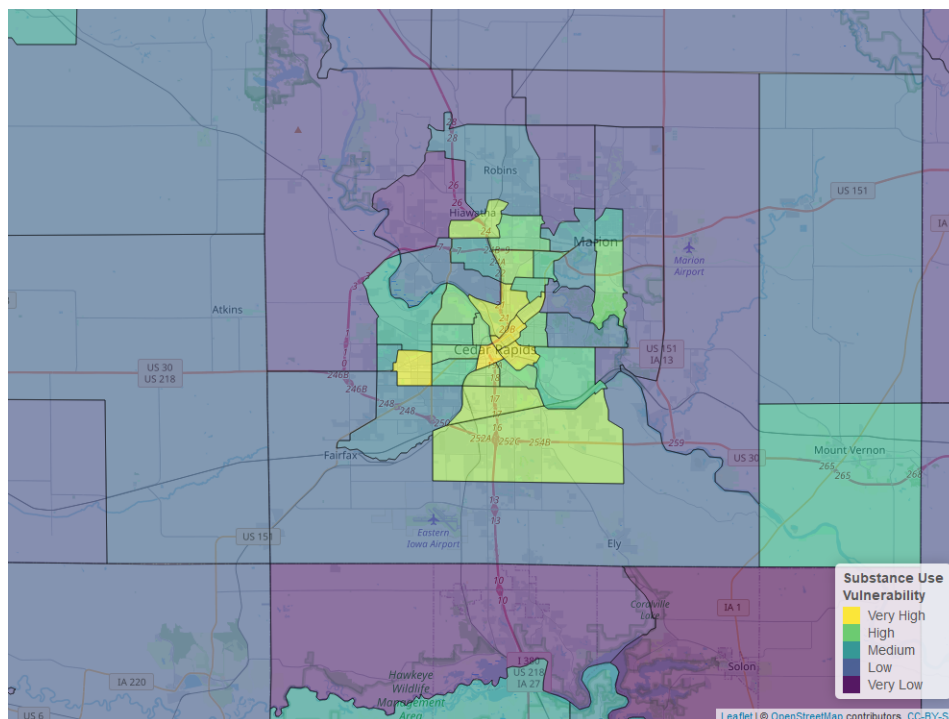
## Which Neighborhoods in Your Community Need Additional Health Resources and Support?

---

The Public Science Collaborative has developed data resources to help community organizations, local governments, and public health practitioners to more effectively target substance use prevention, treatment, and recovery interventions to the places in greatest need of resources. Geographic ‘hot spots’ identify places where local residents are at especially high risk for substance use disorder. We estimated statistical models using administrative data from the Treatment Episode Admissions Dataset (TEDS-A) and the National Survey of Drug Use and Health (NSDUH) to measure significant relationships between substances of misuse and socio-demographic characteristics known to affect health equity and substance use vulnerability. Neighborhood characteristics associated with each substance (e.g. methamphetamine, benzodiazepines) were overlaid with Census Bureau estimates of these same neighborhood characteristics, by census tract. Once mapped, these data help us to identify places with especially high concentrations of at-risk characteristics in need of targeted resources to reduce health inequities. You can learn more about the underlying models for this index in Appendix 1. The resulting maps are included in the pages that follow, and interactive maps can be found online at [https://publicsciencecollaborative.shinyapps.io/iowa\\_sдох/](https://publicsciencecollaborative.shinyapps.io/iowa_sдох/) and [https://publicsciencecollaborative.shinyapps.io/ia\\_substance\\_use\\_vulnerability/](https://publicsciencecollaborative.shinyapps.io/ia_substance_use_vulnerability/).

Towns and cities in Iowa typically have neighborhoods with distinctive risk profiles, with some at especially high (or low) risk of harmful use of a specific substance, such as Heroin, Opioids, or Methamphetamine. Identification of these locations can guide public health outreach efforts and enable more targeted, substance-specific interventions based upon known neighborhood risk factors. To do so, we have developed a city map to identify overall substance use vulnerability, which can be used to support generalized substance use prevention, treatment, and recovery interventions (Figure 5). Maps pertaining to Opioid, Heroin, and Methamphetamine use are included to help identify trends specific to these specific drugs (Figures 6, 7, 8). Typically, areas high in overall substance use vulnerability are also high in substance use. When this is the case, it suggests that general health resources would benefit these places and their residents. If a particular neighborhood is high in a specific substance, drug-specific interventions may be an effective tool in supporting the area.

**Fig. 5.** *Neighborhood Vulnerability Index, All Substance Use*

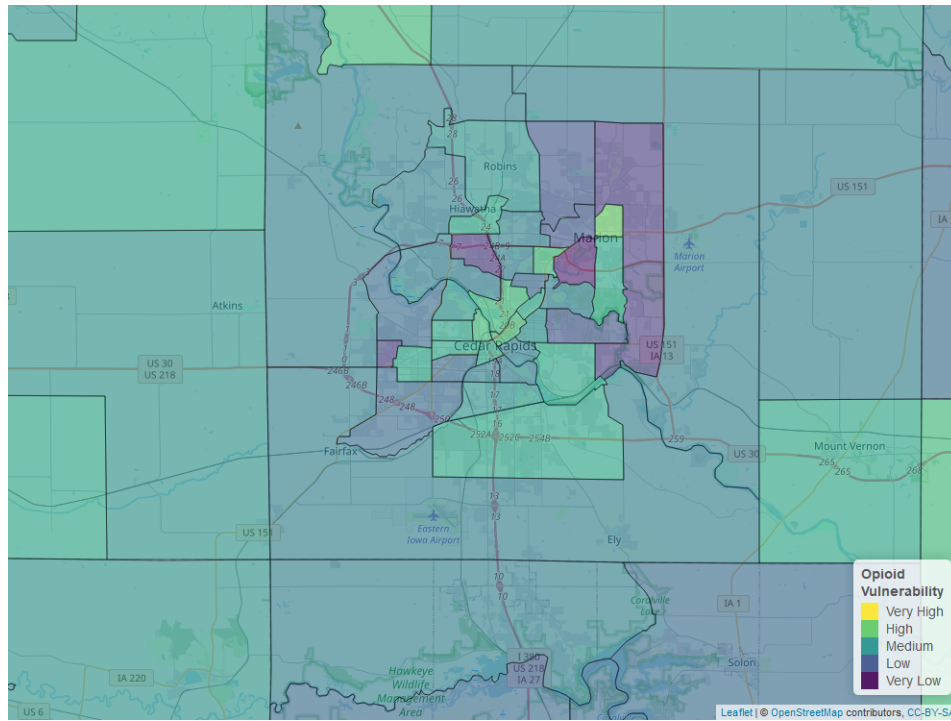


Overall substance use vulnerability varies by neighborhood in Cedar Rapids, but is generally higher than other communities in Iowa (see Figure 5). Due to neighborhood vulnerability, specific neighborhoods may benefit from a targeted approach rather than community wide efforts. Community-wide vulnerability was highest for



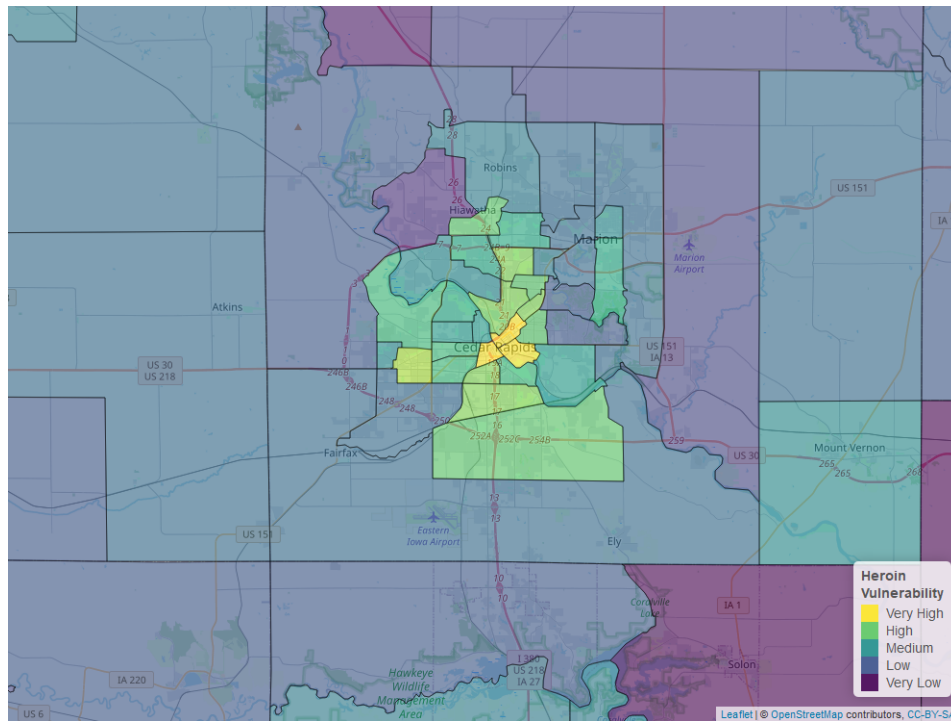
heroin, and a breakdown for each substance is shown in the figures below.

**Fig. 6.** *Neighborhood Vulnerability Index, Opioid Use*



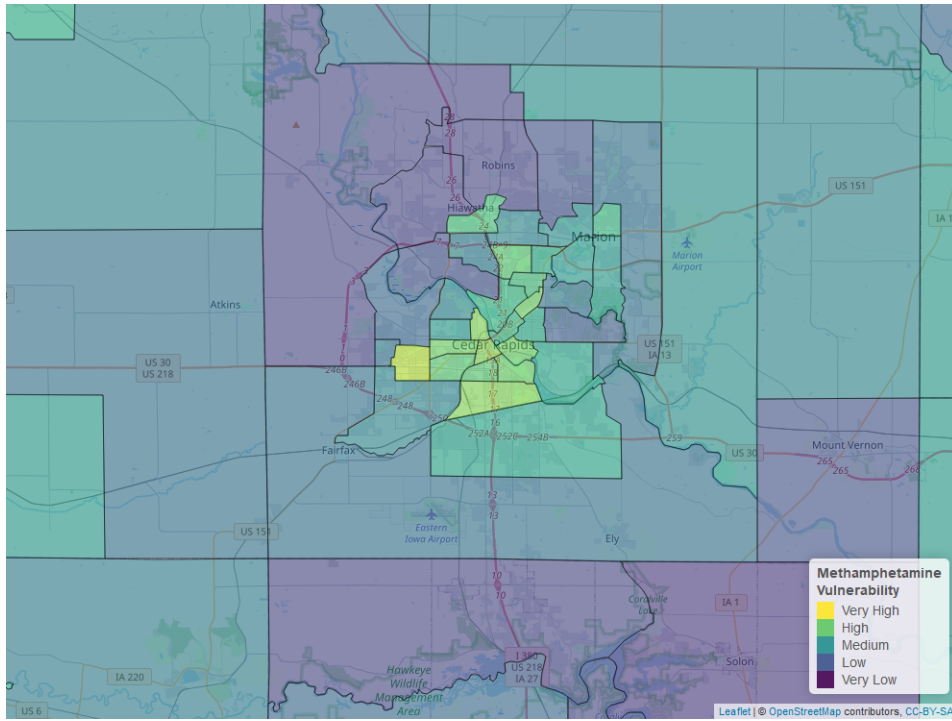
The overall opioid risk in Cedar Rapids is about equal to the average for communities in Iowa (see Figure 6).

**Fig. 7.** *Neighborhood Vulnerability Index, Heroin Use*



The overall heroin risk in Cedar Rapids is higher than the average for communities in Iowa (see Figure 7).

**Fig. 8. Neighborhood Vulnerability Index, Methamphetamine Use**



The overall meth risk in Cedar Rapids is about equal to the average for communities in Iowa (see Figure 8).

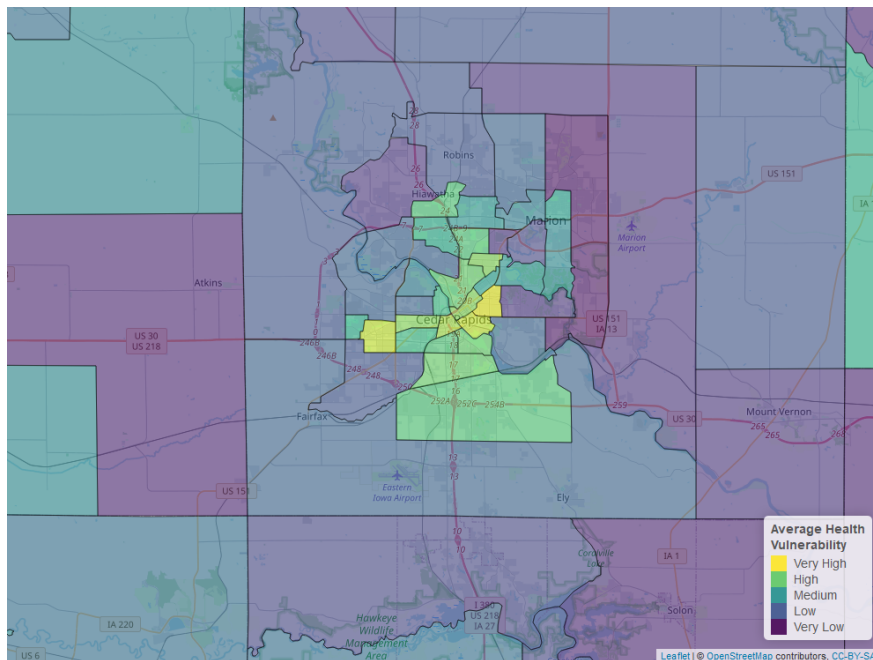
---

## What's Driving Health Disparities in Your Community?

---

In addition to the neighborhood vulnerability maps above, the Public Science Collaborative created a neighborhood map to understand health disparities in Cedar Rapids that draws on well-established social determinants of health. By social determinants, we refer to health risks that are social in origin and tend to be unevenly distributed within a city or town. For example, in places with high average levels of education and low unemployment rates, residents tend to also have better overall health (e.g. longer life span and more healthy years of living). In places where average incomes are low and the rates of single parenting are high, people often have worse health, including higher death rates due to overdose and fewer healthy days. Knowing something about where the social determinants of health support well being and where their scarcity decreases well being can help local community organizations and governments to better target investments to reduce health disparities between neighborhoods.

**Fig. 9.** *Neighborhood-Level Health Disparities, Social Determinants*



According to the social determinants we considered, lack of English is the biggest risk factor for poor health and between neighborhood health disparities in Cedar Rapids. Overall, health risks in Cedar Rapids are about equal to the average for communities in Iowa.

---

## APPENDIX 1: Data Used in this Report

---

### 10.1 Recovery Ready Community Index (RRCI)

Data Tool: Recovery Ready Community Index

Data: Data: PSC Meeting Finder Tool data; PSC Recovery Resources Locator Tool data; PSC Community Resources Tool data, U.S. Census Bureau American Community 5-year Estimates (ACS), 2015-2019

The Recovery Ready Community Index was designed to give a holistic view of a community’s “recovery readiness” and their ability to support people in recovery. The RRCI is constructed with four sub-measures: Breadth of Recovery Resources, Depth of Recovery Resources, Size of Recovery Culture, and Strength (Vibrancy) of Recovery Culture. You can read more about how the RRCI was developed on page two of this report. The specific recovery and community data collected to build the RRCI are detailed below and listed by name and source in Appendices 2, 3, and 4

### 10.2 PSC Meeting Finder Tool

Interactive Tool: <http://public-science.org/meetingfinder/>

Data updated daily: *Adult Children of Alcoholics, Al-Anon/Alateen, Alcoholics Anonymous (AA), Buddhist recovery, Celebrate Recovery, CRUSH, Crystal Meth Anonymous, Dual Recovery Anonymous, Nar-Anon, Narcotics Anonymous (NA), Pill Anonymous, Refuge Recovery, and SMART Recovery*

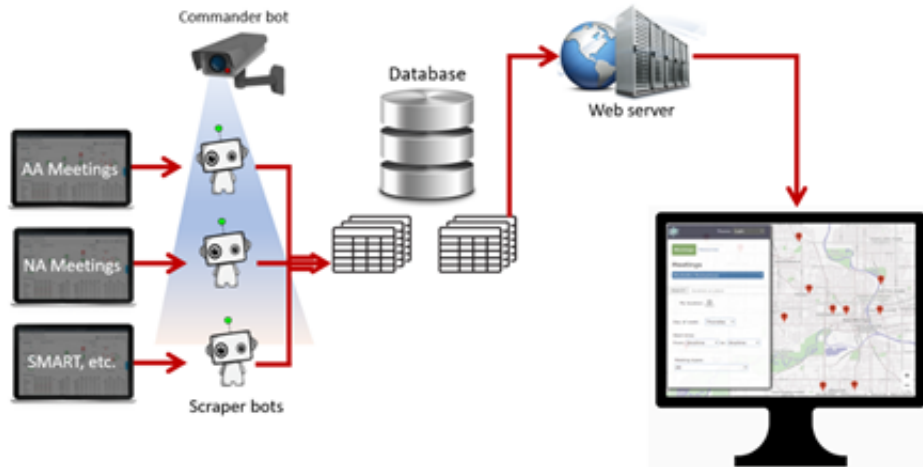
Under the hood, the PSC Meeting Finder Tool is a data pipelining system that fetches the information of the 13 different types of recovery meetings from their original sources, and integrates them into a state map (Following Figure). This system is composed of four major logical components: (1) automated robots that oversee and ‘scrape’ the peer-support websites for daily updates, (2) database infrastructure, (3) the web server infrastructure, and (4) PSC Meeting Finder web-based application. There are two types of automated program robots, called ‘bots’, utilized in this system: commander bots and scraper bots. The commander bot is in charge of running and logging the scraper bots, and reports to the system administrator when a scraper bot is unsuccessful. A scraper bot is in charge of scrapping the original listing websites, and populating the database with the cleaned data. The original listings might be unstructured and contain dirty data. It is the scraper bot’s duty to make sure that the data that is inserted into the database is clean and structured. These data are then pulled into the users’ browser by the PSC Meeting Finder Tool.

**Table 1.** Peer Support Meeting Information for Cedar Rapids

Name of Meeting	Web Resource	# of locations	# of meetings per week
Al-Anon/Alateen	<a href="https://al-anon.org">https://al-anon.org</a>	20	20
Alcoholics Anonymous	<a href="https://www.aa-iowa.org/">https://www.aa-iowa.org/</a>	150	90
CRUSH	<a href="https://www.crushofiowa.com/">https://www.crushofiowa.com/</a>	2	2
Celebrate Recovery	<a href="https://locator.crgroups.info">https://locator.crgroups.info</a>	2	2
Narcotics Anonymous	<a href="https://www.nar-anon.org/">https://www.nar-anon.org/</a>	2	2

Recovery meetings data are gathered and cleaned from 13 web-based resources via our data pipeline system. Most of these resources utilize web scraping techniques (in Python by standard requests or packages such as Selenium and BeautifulSoup packages) as well as parsing PDF (Python: PyPDF2 package) files and XLS sheets (Python: csvkit). Table 1 identifies the name of the meeting, web resource, number of locations, and number of meetings per week.

Fig. 10. PSC Meeting Finder Tool - Under the Hood



### 10.3 PSC Resource Recovery Tool

Interactive Tool:

<http://public-science.org/recoveryresources>

Data updated yearly:

*Iowa Office of Drug Control Policy; Wikipedia of Iowa hospitals; Iowa Department of Public Health; Recovery and Resilience Coordinator with AmeriCorpAllTreatment.com; TransitionalHousing.org; WomenSoberHousing.com; Addicted.org; Recovery.org; Drug-rehabs.org; Iowa Association of Rural Health Clinics; U.S. Department of Veterans Affairs*

Recovery resources include access centers, drug drop off locations, hospitals, medication assisted treatment locations, mental health centers, peer support providers, recovery housing, rural clinics, SUD and problem gambling treatment locations, and Veterans Affairs health centers. To collect this data, we used a variety of public resources, including government agencies and recovery websites. Our collection of recovery resources is not necessarily exhaustive, but represents the data accessed through our initial effort and following the advice of substance use experts and researchers. This data was acquired through a variety of means, including simple downloads, manual data entry, computer reading of PDF files, and scraping websites. See the table below for the recovery resources data sources.

**Table 2.** *Recovery Resource Locator Tool Data Sources (Downloaded Sept 2020-May 2021)*

Resource	Data Source	Website Link
Access Centers	Manual Addition	
Drug Drop Off Locations	Iowa Office of Drug Control Policy	<a href="https://geodata.iowa.gov/datasets/rx-drop-off-locations-1?geometry=-101.674%2C40.504%2C-84.986%2C43.364">https://geodata.iowa.gov/datasets/rx-drop-off-locations-1?geometry=-101.674%2C40.504%2C-84.986%2C43.364</a>
Hospitals	Wikipedia list of Iowa hospitals	<a href="https://en.wikipedia.org/wiki/List_of_hospitals_in_Iowa">https://en.wikipedia.org/wiki/List_of_hospitals_in_Iowa</a>
Medication Assisted Treatment Locations	Iowa Department of Public Health	<a href="https://idph.iowa.gov/mat">https://idph.iowa.gov/mat</a>
Mental Health Centers	Iowa Department of Public Health	<a href="https://dhs.iowa.gov/sites/default/files/MHDDAccreditedProviders_32.pdf?082320201508">https://dhs.iowa.gov/sites/default/files/MHDDAccreditedProviders_32.pdf?082320201508</a>
Recovery Housing	AllTreatment.com; TransitionalHousing.org; WomenSoberHousing.com; Addicted.org; Recovery.org; Drug-rehabs.org	<a href="https://AllTreatment.com;TransitionalHousing.org;WomenSoberHousing.com;Addicted.org;Recovery.org;Drug-rehabs.org">AllTreatment.com;TransitionalHousing.org;WomenSoberHousing.com;Addicted.org;Recovery.org;Drug-rehabs.org</a>
Rural Clinics	Iowa Association of Rural Health Clinics	<a href="https://iarhc.org/find-a-rural-health-clinic?view=map">https://iarhc.org/find-a-rural-health-clinic?view=map</a>
SUD and Problem Gambling Treatment Locations	Iowa Department of Public Health	<a href="https://idph.iowa.gov/Portals/1/userfiles/166/Licensure/All%20Licensed%20Substance%20Use%20Disorder%20-%20Problem%20Gambling%20Program%27s%20List.pdf">https://idph.iowa.gov/Portals/1/userfiles/166/Licensure/All%20Licensed%20Substance%20Use%20Disorder%20-%20Problem%20Gambling%20Program%27s%20List.pdf</a>
Veterans Affairs Health Centers	U.S. Department of Veterans Affairs	<a href="https://www.va.gov/directory/guide/state.asp?STATE=IA&amp;dnum=ALL">https://www.va.gov/directory/guide/state.asp?STATE=IA&amp;dnum=ALL</a>

## 10.4 PSC Community Resource Locator Tool

Interactive Tool:

<http://public-science.org/communityresources>

Data updated yearly:

*Iowa Department of Human Services; Wikipedia of Iowa colleges; Institute of Museum and Library Services, Public Libraries Survey; MyCountyParks.com; USGS Geographic Names Information System; Iowa Dept of Education; Iowa Workforce Development*

Community resources include childcare providers, colleges, libraries, parks, places of worship, K-12 schools, and workforce development centers. To collect this data, we used a variety of public resources, including government agencies and recovery websites. Our collection of community resources is not necessarily exhaustive, but represents the data accessed following the advice of substance use experts and researchers. This data was acquired through a variety of means, including simple downloads, manual data entry, computer reading of PDF files, and scraping websites. See the table below for the community resources data sources.

**Table 3.** *Community Resource Locator Tool Data Sources (Downloaded Sept 2020-April 2021)*

Resource	Data Source	Website Link
Childcare Providers	Iowa Department of Human Services	<a href="http://ccmis.dhs.state.ia.us/ClientPortal/ProviderLocator.aspx">http://ccmis.dhs.state.ia.us/ClientPortal/ProviderLocator.aspx</a>
Colleges	Wikipedia list of Iowa colleges	<a href="https://en.wikipedia.org/wiki/List_of_colleges_and_universities_in_Iowa">https://en.wikipedia.org/wiki/List_of_colleges_and_universities_in_Iowa</a>
Public Libraries	Institute of Museum and Library Services	<a href="https://www.ims.gov/research-evaluation/data-collection/public-libraries-survey">https://www.ims.gov/research-evaluation/data-collection/public-libraries-survey</a>
Parks	MyCountyParks.com	<a href="https://www.mycountyparks.com/County/Default.aspx">https://www.mycountyparks.com/County/Default.aspx</a>
Places of Worship	USGS Geographic Names Information System	<a href="https://data.iowa.gov/Physical-Geography/Iowa-Church-Buildings/juvk-dad9">https://data.iowa.gov/Physical-Geography/Iowa-Church-Buildings/juvk-dad9</a>
K-12 Schools	Iowa Department of Education	Public Schools: <a href="https://educateiowa.gov/documents/directories/2020/09/2020-21-iowa-public-school-building-directory">https://educateiowa.gov/documents/directories/2020/09/2020-21-iowa-public-school-building-directory</a>
		Private Schools: <a href="https://educateiowa.gov/documents/directories/2020/09/2020-21-iowa-non-public-school-building-directory">https://educateiowa.gov/documents/directories/2020/09/2020-21-iowa-non-public-school-building-directory</a>
Workforce Development Centers	Iowa Workforce Development	<a href="https://www.iowaworkforcedevelopment.gov/contact">https://www.iowaworkforcedevelopment.gov/contact</a>

## 10.5 Substance Use Vulnerability Index

Data Tool:

Substance Use Vulnerability Index

Data:

*Treatment Episode Data Set-Admission and Discharge (TEDS), 2000-2018 National Survey on Drug Use and Health data (NSDUH), 2015-2019 U.S. Census Bureau American Community 5-year Estimates (ACS), 2015-2019*

Geographic ‘hot spots’ of people at risk for substance use disorder were first predicted based on models of administrative data from Treatment Episode Data on admissions (TEDS) and the National Survey of Drug Use and Health (NSDUH) data that assessed significant relationships between key substances and socio-demographic characteristics known to affect health equity and substance use vulnerability (Tables 5-6 results below). Then, the significant predictions of risk for each substance were overlaid with Census Bureau’s American Community Survey 5-year estimates of these population characteristics to provide a visual representation of places with especially high concentrations of people with at-risk characteristics. The Census characteristics described in Table 4 below are reported in Figures 5-8

**Table 4.** *Substance Use Risk Index using U.S. Census Bureau American Community 5-year Estimates (2015-2019)*

Risk Characteristics	Census Table	Description
Age	B06001	Data table includes population by age categories.
Sex	B01001	Data table includes population by sex.
Poverty Status	S1701_C01	Data table includes poverty status by age bracket and for different income levels.
Marital Status	B12001	Data table includes marital status by sex.
Parental Status	B09002	Data table includes parental and childcare status.

**Table 5.** *Substance Use Risk Index using TEDS Admission Data*

Risk Characteristics	Alcohol	Cannabis	Meth	Cocaine	Other Opiates	Heroin	Benzos
Age	Older, >35	Young, <35, <25	Middle age	>45	<25	Spikes at both ends	<25
Sex	Male	Male	Female			Male	Female
Race	Black, Hispanic	Black	White	Non-white	Asian, white	Non-white	White
Education		No college	No college	Some college	Some college	Some college	Some college
Poverty	Public Assistance	Public Assistance		Retired/Disabled	Wages/Salary, Retired/Disabled	Wages/Salary, Retired/Disabled	
Employment	Employed	Part time	Unemployed	Employed	Unemployed		Part time
Marital Status			Separated, Divorced, Widowed	Single	Married	Single	
Pop Density	Rural, Micro	Rural, Micro	Micro	Metro	Metro	Metro	Metro, Micro



**Table 6.** *Substance Use Risk Index using NSDUH Data*

<b>Risk Characteristics</b>	<b>Alcohol</b>	<b>Cannabis</b>	<b>Meth</b>	<b>Cocaine</b>	<b>Other Opiates</b>	<b>Heroin</b>	<b>Benzos</b>
Age	26-34	Young, <35, <25	Middle age	18-34	<50	26-49	18-34
Sex	Male	Male	Male	Male	Male	Male	Male
Race	White	White, Native American	White, Native American	White, Native American	White, Native American	White	White
Education	College	Some college, maybe	No college		No college	No college	
Income	>75,000	<20,000	<40,000	<20,000	<40,000	<20,000	
Employment	Employed	Unemployed	Unemployed	Unemployed	Unemployed	Unemployed	Unemployed
Marital Status	Single, separated	Single	Separated, Divorced	Single	Single	Single	Single
Pop Density	Metro	Metro	Non-metro	Metro	Metro	Metro	Metro

## 10.6 Social Determinants of Health Index

Data: Social Determinants of Health Index

Data: *U.S. Census Bureau American Community 5-year Estimates (ACS), 2015-2019*

The Social Determinants of Health Index was developed to promote health equity through providing a better understanding of the environments that create and ameliorate the multifactorial risk factors of substance misuse on priority populations. All data for the Substance Use Vulnerability Index comes from the U.S. Census Bureau American Community Survey 5-year estimates (2015-2019). The 5-year pooled dataset represents 60 months of data that enable more precise multi-year estimates. Because many of Iowa’s counties have relatively small populations, the 5-year set of pooled data is the only type of ACS estimates that are available to use across all 99 counties. Following the standards set by *Washington State’s Social Determinants of Health Website* ([www.doh.wa.gov/DataandStatisticalReports/HealthDataVisualization/SocialDeterminantsofHealthDashboards/CensusTractSocialDeterminantsofHealth](http://www.doh.wa.gov/DataandStatisticalReports/HealthDataVisualization/SocialDeterminantsofHealthDashboards/CensusTractSocialDeterminantsofHealth)), PSC collected information on the educational attainment level, health insurance coverage, English proficiency, unemployment, and poverty status in each county and then used this information to calculate the average health index for each of Iowa’s 99 counties

**Table 7.** *Substance Use Risk Index using U.S. Census Bureau American Community 5-year Estimates (2015-2019)*

Risk Characteristics	Census Table	Description
Educational Attainment	S1501	Data table includes educational attainment level for population 25+, by sex.
Health Insurance Coverage	S2701_C05_001	Variable is percent of civilian noninstitutionalized population that is uninsured.
English Proficiency	S1601_C06_001	Variable is percent of population 5+ that speaks English less than very well.
Unemployment, 16+	S2301_C04_001	Variable is percent of population 16+ that is in the labor force, but is unemployed.
Poverty Status	S1701_C01	Data table includes poverty status by age bracket and for different income levels.

The Social Determinants of Health Index was developed to promote health equity through providing a better understanding of the environments that create and ameliorate the multifactorial risk factors of substance misuse on priority populations. All data for the Substance Use Vulnerability Index comes from the U.S. Census Bureau American Community Survey 5-year estimates (2015-2019). The 5-year pooled dataset represents 60 months of data that enable more precise multi-year estimates. Because many of Iowa’s counties have relatively small populations, the 5-year set of pooled data is the only type of ACS estimates that are available to use across all 99 counties. Following the standards set by *Washington State’s Social Determinants of Health Website* ([www.doh.wa.gov/DataandStatisticalReports/HealthDataVisualization/SocialDeterminantsofHealthDashboards/CensusTractSocialDeterminantsofHealth](http://www.doh.wa.gov/DataandStatisticalReports/HealthDataVisualization/SocialDeterminantsofHealthDashboards/CensusTractSocialDeterminantsofHealth)), PSC collected information on the educational attainment level, health insurance coverage, English proficiency, unemployment, and poverty status in each county and then used this information to calculate the average health index for each of Iowa’s 99 counties

## Appendix 2: Peer Support Contacts in Your Area

Table 8. Appedix 2

Type	Name	Meetings per Week	Meeting Location
AA	All Saints Group	1	720 29th St SE, Cedar Rapids, IA 52403, USA
AA	An AA Group	5	3224 1st Ave NE, Cedar Rapids, IA 52402, USA
AA	Basic Text Group	1	525 A Ave NE, Cedar Rapids, IA 52401, USA
AA	Big Book Meeting Group	1	3224 1st Ave NE, Cedar Rapids, IA 52402, USA
AA	Bridge to Shore	1	212 Edgewood Rd NW, Cedar Rapids, IA 52405, USA
AA	By The Big Book Group	1	212 Edgewood Rd NW, Cedar Rapids, IA 52405, USA
AA	Coffee and a Big Book	2	212 Edgewood Rd NW, Cedar Rapids, IA 52405, USA
AA	Discovery Group	1	1700 B Ave NE, Cedar Rapids, IA 52402, USA
AA	Early Bird Welcome Group	5	3224 1st Ave NE, Cedar Rapids, IA 52402, USA
AA	Early Birds Upstairs Group	5	3224 1st Ave NE, Cedar Rapids, IA 52402, USA
AA	Foxhall Group	1	3791 Blairs Ferry Rd NE, Cedar Rapids, IA 52402, USA
AA	Full Measure Discussion	1	3224 1st Ave NE, Cedar Rapids, IA 52402, USA
AA	Full Measures Speaker Group	1	6455 E Ave NW, Cedar Rapids, IA 52405, USA
AA	Happy Hour Group	7	3224 1st Ave NE, Cedar Rapids, IA 52402, USA
AA	Happy Hour Upstairs Group	3	3224 1st Ave NE, Cedar Rapids, IA 52402, USA
AA	Heard It Through The Grapevine Group	1	212 Edgewood Rd NW, Cedar Rapids, IA 52405, USA
AA	Hill Top Group	1	211 21st Ave SW, Cedar Rapids, IA 52404, USA
AA	Hope Group	1	2736 Bowling St SW, Cedar Rapids, IA 52404, USA
AA	Keep It Simple Group	1	3601 16th Ave SW, Cedar Rapids, IA 52404, USA
AA	Keep It Simple Stupid Group	1	3224 1st Ave NE, Cedar Rapids, IA 52402, USA
AA	Kenwood Group	1	175 34th St NE, Cedar Rapids, IA 52402, USA
AA	Last Call	1	509 3rd St SE, Cedar Rapids, IA 52401, USA
AA	LGBTQ Group	1	Main Campus, 6301, Kirkwood Blvd SW, Cedar Rapids, IA 52404, United States
AA	Living On The Ragged Edge Group	1	2600 1st Ave NW, Cedar Rapids, IA 52405, USA

AA	Mens Group	1	212 Edgewood Rd NW, Cedar Rapids, IA 52405, USA
AA	Mercy Group	7	212 Edgewood Rd NW, Cedar Rapids, IA 52405, USA
AA	Monday Late Nighters Group	1	509 3rd St SE, Cedar Rapids, IA 52401, USA
AA	Neighborly Group	1	512 6th St SE, Cedar Rapids, IA 52401, USA
AA	New Beginnings Group	1	3224 1st Ave NE, Cedar Rapids, IA 52402, USA
AA	One Day At A Time Group	1	212 Edgewood Rd NW, Cedar Rapids, IA 52405, USA
AA	Original Group	2	3224 1st Ave NE, Cedar Rapids, IA 52402, USA
AA	Pass It On Group	2	3224 1st Ave NE, Cedar Rapids, IA 52402, USA
AA	Read it and Weep	1	212 Edgewood Rd NW, Cedar Rapids, IA 52405, USA
AA	Serenity Seekers Group	1	3791 Blairs Ferry Rd NE, Cedar Rapids, IA 52402, USA
AA	Speaker Meeting	1	6455 E Ave NW, Cedar Rapids, IA 52405, USA
AA	Sunday Night Primary Purpose Group	1	3224 1st Ave NE, Cedar Rapids, IA 52402, USA
AA	Sunday Night Young Peoples Grp	1	525 A Ave NE, Cedar Rapids, IA 52401, USA
AA	There Is A Solution Group	1	6600 C Ave NE, Cedar Rapids, IA 52402, USA
AA	Thursday Night New Mens Meeting Group	1	3224 1st Ave NE, Cedar Rapids, IA 52402, USA
AA	We Are Not Saints Group	1	212 Edgewood Rd NW, Cedar Rapids, IA 52405, USA
AA	Welcome Wagon Group	1	3224 1st Ave NE, Cedar Rapids, IA 52402, USA
AA	West Highland Group	1	1361 7th Ave SW, Cedar Rapids, IA 52404, USA
AA	Women Into Action Group	1	2736 Bowling St SW, Cedar Rapids, IA 52404, USA
AA	Women's Step Study Group	1	212 Edgewood Rd NW, Cedar Rapids, IA 52405, USA
AA	Womens Fellowship Group	1	3224 1st Ave NE, Cedar Rapids, IA 52402, USA
AA	Young At Heart Group	1	212 Edgewood Rd NW, Cedar Rapids, IA 52405, USA
	Face Anything Fear Nothing	1	1756 1st Ave SE, Cedar Rapids, IA 52402, USA
	Face Anything, Fear Nothing	1	1756 1st Ave SE, Cedar Rapids, IA 52402, USA
	From the Streets to the Seats	3	1756 1st Ave SE, Cedar Rapids, IA 52402, USA
	New Attitudes	1	525 A Ave NE, Cedar Rapids, IA 52401, USA
	Principles Before Personalities	3	1756 1st Ave SE, Cedar Rapids, IA 52402, USA
	Sisters and Brothers of Serenity	1	1756 1st Ave SE, Cedar Rapids, IA 52402, USA
	Sisters Supporting Sisters	1	1756 1st Ave SE, Cedar Rapids, IA 52402, USA

	Steps in the Right Direction	1	1756 1st Ave SE, Cedar Rapids, IA 52402, USA
	The Gift It Works	1	601 2nd Ave SE, Cedar Rapids, IA 52401, USA
	We Do Recover	5	601 2nd Ave SE, Cedar Rapids, IA 52401, USA
	We Do Recover	2	842 14th St SE, Cedar Rapids, IA 52403, USA
AlAnon	After Work AFG	1	212 Edgewood Rd NW, Cedar Rapids, IA 52405, USA
AlAnon	Feeling Better AFG	1	3791 Blairs Ferry Rd NE, Cedar Rapids, IA 52402, USA
AlAnon	Friday Morning AFG	1	3224 1st Ave NE, Cedar Rapids, IA 52402, USA
AlAnon	Hope Fri Nite 7PM AFG	1	2736 Bowling St SW, Cedar Rapids, IA 52404, USA
AlAnon	Monday Morning Boosters AFG	1	3224 1st Ave NE, Cedar Rapids, IA 52402, USA
AlAnon	New Attitudes AFG	1	3224 1st Ave NE, Cedar Rapids, IA 52402, USA
AlAnon	New Creations AFG	1	4700 Johnson Ave NW, Cedar Rapids, IA 52405, USA
AlAnon	Serenity Sunday AFG	1	3224 1st Ave NE, Cedar Rapids, IA 52402, USA
AlAnon	Thank God It's Alateen	1	3224 1st Ave NE, Cedar Rapids, IA 52402, USA
AlAnon	West Highlands AFG	1	1361 7th Ave SW, Cedar Rapids, IA 52404, USA
CR	King of Kings Lutheran Church	1	3275 N. Center Point RD, Cedar Rapids, Iowa 52411 United States
CRUSH	Mission of Hope	1	1700 B Ave NE, Cedar Rapids, IA 52402
NarAnon	Hope Meeting	1	1202 10th St SE, Cedar Rapids, IA 52401, USA

.....

### Appendix 3: Recovery Resources in Your Area

.....

**Table 9.** Cedar Rapids Recovery Resource Type, Name of Business, and Address of Business

Resource	Name	Address
Access Center	Linn County Mental Health Access Center	501 13th St. NW, Cedar Rapids, IA 52405
Drug Drop Off Location	Cedar Rapids Police Department	505 1st Street SW, Cedar Rapids, Iowa 52404
Drug Drop Off Location	Hy-Vee (Drugtown) Drugstore	2001 Blairs Ferry Rd NE, Cedar Rapids, Iowa 52402
Drug Drop Off Location	Hy-Vee Drugstore #4 (7025)	4825 Johnson Ave., NW, Cedar Rapids, Iowa 52405
Drug Drop Off Location	Hy-Vee Drugstore #6 (7019)	505 Boyson Rd, NE, Cedar Rapids, Iowa 52402
Drug Drop Off Location	Hy-Vee Drugstore Pharmacy	1520 6th St SW, Cedar Rapids, Iowa 52404
Drug Drop Off Location	Hy-Vee Pharmacy	2001 Blairs Ferry Rd NE, Cedar Rapids, Iowa 52402

Drug Drop Off Location	Hy-Vee Pharmacy	5050 Edgewood Rd, Cedar Rapids, Iowa 52411
Drug Drop Off Location	Hy-Vee Pharmacy #1 (1054)	1843 Johnson Avenue, NW, Cedar Rapids, Iowa 52405
Drug Drop Off Location	Hy-Vee Pharmacy #2 (1055)	279 Collins Road, NE, Cedar Rapids, Iowa 52402
Drug Drop Off Location	Hy-Vee Pharmacy #3 (1056)	20 Wilson Avenue SW, Cedar Rapids, Iowa 52404
Drug Drop Off Location	Hy-Vee Pharmacy #4 (1060)	1556 1st Ave. NE, Cedar Rapids, Iowa 52402
Drug Drop Off Location	Hy-Vee Pharmacy #5 (1061)	3235 Oakland Road NE, Cedar Rapids, Iowa 52402
Drug Drop Off Location	Hy-Vee Pharmacy #6 (1063)	4035 Mt. Vernon Road, Cedar Rapids, Iowa 52403
Drug Drop Off Location	Linn County Sheriff Office	310 2nd Ave SW, Cedar Rapids, Iowa 52406
Drug Drop Off Location	Walgreens	3325 16th Ave SW, Cedar Rapids, Iowa 52404
Hospital	Mercy Medical Center-Cedar Rapids	701 10th St SE, Cedar Rapids, IA 52403
Hospital	UnityPoint Health-Saint Luke's Hospital	1026 A Ave NE, Cedar Rapids, IA 52402
Medication Assisted Treatment	Abbe Community Mental Health - Mr. Ali Safdar	520 11th St NW, Cedar Rapids, IA 52405
Medication Assisted Treatment	Abbe Community Mental Health - Barbara Lynn Williams NP	520 11th Street NW, Cedar Rapids, IA 52405
Medication Assisted Treatment	St. Luke's Hospital - Dr. Andrea Weber M.D.	1026 A Avenue NE, Cedar Rapids, IA 52402
Medication Assisted Treatment	Amy Wilson NP	1201 3rd Avenue SE, Cedar Rapids, IA 52403
Medication Assisted Treatment	Cedar Rapids Comprehensive Treatment Center - Dr. Arleen Zahn-Houser M.D.	5005 Bowling Street SW, Cedar Rapids, IA 52402
Mental Health Center	Abbe Center for Community Mental Health	520 11th Street NW, Cedar Rapids, IA
Mental Health Center	Arc of East Central Iowa, The Foundation 2	680 2nd St. SE, Cedar Rapids, IA
Mental Health Center	Grace C Mae Advocate Center, Inc.	1714 Johnson Ave. NW, Cedar Rapids, IA
Mental Health Center	Heart and Solutions, LLC	3726 Queen Ct. SW, Cedar Rapids, IA
Mental Health Center	Life Connections, L.C.	3100 E. Ave. Nw., Cedar Rapids, IA
Peer Support Provider	Abbe Community Mental Health - Club 520	2515 18th St SW, Cedar Rapids, IA
Peer Support Provider	Abbe Community Mental Health - Integrated Health Home	520 11th St. NW, Cedar Rapids, IA
Peer Support Provider	Abbe Community Mental Health - Outreach Team	317 7th Ave SE Suite 302a, Cedar Rapids, IA
Peer Support Provider	Abbe Community Mental Health - Program for Assertive Community Treatment (PACT)	520 11th St. NW, Cedar Rapids, IA
Peer Support Provider	Abbe Community Mental Health - Peer-run Warm Line	3100 E Ave NW, Suite 103, Cedar Rapids, IA
Peer Support Provider	Cedar Valley Community Support Services - CVCSS Club	520 11th St. NW, Cedar Rapids, IA
Peer Support Provider	Linn County Access Center	116 27th Street NE Suite 1a, Cedar Rapids, IA
		501 13th Street NW, Cedar Rapids, IA

Peer Support Provider	Plugged-In - Community-based Peer Support	Cedar Rapids, IA
Recovery Coaching	Abbe Community Mental Health - Outreach Team	520 11th St. NW, Cedar Rapids, IA
Recovery Housing	Area Substance Abuse Council	3601 16th Avenue SW, Cedar Rapids, IA
Recovery Housing	The Safe Place Foundation	529 6th Avenue South East, Cedar Rapids, IA
Recovery Housing	Area Substance Abuse Council The Way Home Apartments	5480 Kirkwood Blvd SW, Cedar Rapids, IA
SUD and Problem Gambling Treatment Location	A New Leaf Mental Health and Wellness Center	5925 Council Street NE, Suite 117 Cedar Rapids, 52302
SUD and Problem Gambling Treatment Location	ANCHOR Center	6th Judicial District Department of Correctional Services 951 29th Ave SW Cedar Rapids, Iowa 52404
SUD and Problem Gambling Treatment Location	Area Substance Abuse Council (ASAC)	3601 16th Avenue SW, Cedar Rapids, 52404
SUD and Problem Gambling Treatment Location	Cedar Rapids Treatment Center/CRC Recovery Inc.	5005 Bowling Street SW Ste. C Cedar Rapids, 52404
SUD and Problem Gambling Treatment Location	Life Connection, LC	215 4th Ave Suite 300, Cedar Rapids, IA 52041
SUD and Problem Gambling Treatment Location	Mercy Medical Center Sedlacek Unit	5975 Rockwell Dr NE Cedar Rapids, 52402
SUD and Problem Gambling Treatment Location	Still Waters Recovery Counseling and Wellness Services	1120 Depot Lane SE Suite 100 Cedar Rapids, 52401
SUD and Problem Gambling Treatment Location	Unity Point Health/St. Luke s Methodist Hospital	1030 Fifth Avenue SE Suite 110 Cedar Rapids, 52403
VA Health Center	Cedar Rapids CBOC	2230 Wiley Blvd SW, Cedar Rapids, IA 52404
VA Health Center	Cedar Rapids Vet Center	4250 River Center Court NE, Suite D, Cedar Rapids, IA 52402

## Appendix 4: Community Resources in Your Area

**Table 10.** Cedar Rapids Community Resource Type, Name of Business, and Address of Business

Resource	Name	Address
Childcare Provider	A Mothers Love Childcare Center	5821 C St SW, Cedar Rapids, IA 52404
Childcare Provider	Ellen Jordan	839 12th St NE, Cedar Rapids, IA 52402
Childcare Provider	Everina Kosongo	117 34th St, Cedar Rapids, IA 52402
Childcare Provider	Felicia White-Carson	2519 Bryant Blvd SW, Cedar Rapids, IA 52404
Childcare Provider	First Step Daycare	1635 13th Ave SE, Cedar Rapids, IA 52401
Childcare Provider	Five Seasons Learning Centers-Arthur	2630 B Ave NE, Cedar Rapids, IA 52402
Childcare Provider	Five Seasons Learning Centers-Coolidge	6225 1st Ave SW, Cedar Rapids, IA 52405
Childcare Provider	Five Seasons Learning Centers-Grant	254 Outlook Dr SW, Cedar Rapids, IA 52404
Childcare Provider	Five Seasons Learning Centers-Grant Wood Elem	645 26th St SE, Cedar Rapids, IA 52403
Childcare Provider	Five Seasons Learning Centers-Viola Gibson	6101 Gibson Dr NE, Cedar Rapids, IA 52411
Childcare Provider	Five Seasons Learning Centers-Wright	1524 Hollywood Blvd NE, Cedar Rapids, IA 52402
Childcare Provider	Gabriella Leonard	3215 12th Ave SE, Cedar Rapids, IA 52403
Childcare Provider	Godelive Basheka	1104 K St SW, Cedar Rapids, IA 52404
Childcare Provider	Gretchen Edson	347 Brentwood Dr NE, Cedar Rapids, IA 52402
Childcare Provider	HACAP Head Start-Hayes Center	1924 D Street SW, Cedar Rapids, IA 52404
Childcare Provider	HACAP Head Start-Inn Circle	5560 6th St SW, Cedar Rapids, IA 52404
Childcare Provider	HACAP Head Start-Jane Boyd	943 14th Ave SE, Cedar Rapids, IA 52401
Childcare Provider	HACAP Head Start-Olivet	230 10th St NW, Cedar Rapids, IA 52404
Childcare Provider	HACAP Head Start-Urban	1328 2nd Ave SE, Cedar Rapids, IA 52403
Childcare Provider	HACAP-Horizons	819 5th St SE, Cedar Rapids, IA 52401
Childcare Provider	Hand in Hand-Bowman Woods	151 Boyson Rd, Cedar Rapids, IA 52402
Childcare Provider	Hand in Hand-Tower Lane	1300 Tower Lane NE, Cedar Rapids, IA 52402
Childcare Provider	Happy Hollow Preschool and Childcare LLC	2600 1st Ave NW, Cedar Rapids, IA 52405
Childcare Provider	Harmony Young DBA Harmonys Youngsters	2169 Larry Dr NE, Cedar Rapids, IA 52402
Childcare Provider	Harvest Christian Daycare and Learning Center	4070 22nd Ave SW, Cedar Rapids, IA 52404
Childcare Provider	Nickie Cole	1512 4th St SW, Cedar Rapids, IA 52404
Childcare Provider	Noah's Ark Preschool	6455 E Ave NW, Cedar Rapids, IA 52405
Childcare Provider	Ondrea Allison	281 34th St Dr SE, Cedar Rapids, IA 52403
Childcare Provider	Our Little Haven II	143 29th Ave SW, Cedar Rapids, IA 52404
Childcare Provider	Perpetua Nsabimana	1028 Koulsi Blvd NW, Cedar Rapids, IA 52405
Childcare Provider	Pierrette Kaluhala	1315 Winchell Dr NE, Cedar Rapids, IA 52402
Childcare Provider	Precious Moments Montessori Preschool LLC	2957 Center Point Rd NE, Cedar Rapids, IA 52402



Childcare Provider	Rachelle Smith	2307 Scottsdale St SW, Cedar Rapids, IA 52404
Childcare Provider	Rebeca Furaha	357 16th St SE, Cedar Rapids, IA 52403
Childcare Provider	Rebecca English	4024 M Ave NW, Cedar Rapids, IA 52405
Childcare Provider	Afton Schulte	2024 Carolina Dr NE, Cedar Rapids, IA 52402
Childcare Provider	Akonkwa Nshangalume	5513 Mayfair St SW, Cedar Rapids, IA 52404
Childcare Provider	Albert Wakankisingi	508 C Ave NW, Cedar Rapids, IA 52405
Childcare Provider	All Saints Child Care and Preschool	720 29th St SE, Cedar Rapids, IA 52403
Childcare Provider	Amber Davenport	2428 1st St SW, Cedar Rapids, IA 52404
Childcare Provider	Amber Davidson	928 Jacolyn Dr NW, Cedar Rapids, IA 52405
Childcare Provider	Angela Genthe	2324 J St SW, Cedar Rapids, IA 52404
Childcare Provider	Angela Johnson	1039 Clifton St NE, Cedar Rapids, IA 52402
Childcare Provider	Angela Postley	905 C Ave NW, Cedar Rapids, IA 52404
Childcare Provider	Apple Kids-Cedar Rapids	1525 Hollywood Blvd, Cedar Rapids, IA 52402
Childcare Provider	HFCSS-St Jude Center	3700 1st Ave NW, Cedar Rapids, IA 52405
Childcare Provider	Holly Manley-Wirtz	7421 Berkshire Dr NE, Cedar Rapids, IA 52402
Childcare Provider	Isaac Newton Christian Academy Pre-K	1635 Linmar Dr NE, Cedar Rapids, IA 52402
Childcare Provider	Jacqueline Anderson	3816 Elmwood Dr NE, Cedar Rapids, IA 52402
Childcare Provider	Jane Boyd Achievement Academy at Johnson STEAM Aca	355 18th Street SE, Cedar Rapids, IA 52403
Childcare Provider	Janyce Gilbert	821 Pawnee Dr NW, Cedar Rapids, IA 52405
Childcare Provider	Jennifer Rasmussen	1538 Bever Ave SE, Cedar Rapids, IA 52403
Childcare Provider	Jennifer White	1642 32nd St NE, Cedar Rapids, IA 52402
Childcare Provider	Jessica Ruble	3310 Old Orchard Rd NE, Cedar Rapids, IA 52402
Childcare Provider	Receatta Roling	3000 J St SW Apt 2105, Cedar Rapids, IA 52404
Childcare Provider	REL Enterprises, LLC	1723 Bever Ave SE Apt 1, Cedar Rapids, IA 52403
Childcare Provider	Renee Dittmar	3007 Outlook Dr SW, Cedar Rapids, IA 52404
Childcare Provider	Riley Peak	820 F Ave NW, Cedar Rapids, IA 52405
Childcare Provider	Robert McMurrin	1223 Lily St SE, Cedar Rapids, IA 52403
Childcare Provider	Robynette Fox	606 Wiley Blvd NW, Cedar Rapids, IA 52405
Childcare Provider	Ruth Kimm	7273 Benton Linn Rd, Cedar Rapids, IA 52404
Childcare Provider	Sara Waddell	5021 East Rd SW, Cedar Rapids, IA 52404
Childcare Provider	Sarah Castanon-Hernandez	349 12th St SW, Cedar Rapids, IA 52404
Childcare Provider	Sarah Phipps	6700 Tennessee Dr SW, Cedar Rapids, IA 52404
Childcare Provider	Sauda Mukeshimana	5016 1st Ave NW Unit 1, Cedar Rapids, IA 52405
Childcare Provider	Selina Brown	803 35th St SE Unit 1, Cedar Rapids, IA 52403
Childcare Provider	Sha'Mique Holliday	226 Greenfield St NE, Cedar Rapids, IA 52402
Childcare Provider	Shantai Jackson	1502 26th St SE, Cedar Rapids, IA 52403

Childcare Provider	Share and Care Preschool	4210 Johnson Ave NW, Cedar Rapids, IA 52405
Childcare Provider	Shayla Dillard	134 21st Ave SW Apt 2, Cedar Rapids, IA 52404
Childcare Provider	Ariel Ridgway	2041 Coldstream Ave NE, Cedar Rapids, IA 52402
Childcare Provider	ASAC Heart Of Iowa Child Care Center	4050 Bowling St SW, Cedar Rapids, IA 52404
Childcare Provider	Ashlee Ewers	1528 Center Point Rd NE, Cedar Rapids, IA 52402
Childcare Provider	Becky Hudson	6522 Mosswood Ln NE, Cedar Rapids, IA 52402
Childcare Provider	Betty Sandford	1024 18th St NW, Cedar Rapids, IA 52405
Childcare Provider	Biengeleca Mateso	2318 Desoto St SW, Cedar Rapids, IA 52404
Childcare Provider	Big Starts Little Hearts Day-care	110 29th Ave Dr SW, Cedar Rapids, IA 52404
Childcare Provider	Brenda O'Brian	1003 Jacolyn Dr NW, Cedar Rapids, IA 52405
Childcare Provider	Brittany Mitchell	1515 14th Ave SW, Cedar Rapids, IA 52404
Childcare Provider	Calvary Christian Preschool	327 35th St NE, Cedar Rapids, IA 52402
Childcare Provider	Jodi Kenney	936 19th Ave SW, Cedar Rapids, IA 52404
Childcare Provider	Jordanne Blue	2520 Ellisview Ct NW, Cedar Rapids, IA 52405
Childcare Provider	Julia Oliver	236 19th St NW, Cedar Rapids, IA 52405
Childcare Provider	Julia Terpstra	366 Cambridge Dr NE, Cedar Rapids, IA 52402
Childcare Provider	Julienne Butoto	2123 Chandler St SW, Cedar Rapids, IA 52404
Childcare Provider	Jungle Friends	3336 Prairie Dr NE, Cedar Rapids, IA 52402
Childcare Provider	Karen Antons	724 34th St NE, Cedar Rapids, IA 52402
Childcare Provider	Karen Papich	1604 J St SW, Cedar Rapids, IA 52404
Childcare Provider	Kasasila Nyandwi	207 Ann St SW, Cedar Rapids, IA 52404
Childcare Provider	St James Kids Club Day Care	1430 Ellis Blvd NW, Cedar Rapids, IA 52405
Childcare Provider	St Matthew Early Childhood Center	2244 1st Ave NE, Cedar Rapids, IA 52402
Childcare Provider	St Paul's Early Learning Center	1340 3rd Ave SE, Cedar Rapids, IA 52403
Childcare Provider	St Pius X Early Learning Center	4925 Council St NE, Cedar Rapids, IA 52402
Childcare Provider	Summit Schools Inc	1010 Regent St NE, Cedar Rapids, IA 52402
Childcare Provider	Susan Paxson	3920 E Ave NE, Cedar Rapids, IA 52402
Childcare Provider	Care Bear Kids Inc	3400 King Dr SW, Cedar Rapids, IA 52404
Childcare Provider	Caring Corner Christian Day-care and Preschool	5200 Northland Ave NE, Cedar Rapids, IA 52402
Childcare Provider	Carleta Cherry	135 17th St SW, Cedar Rapids, IA 52404
Childcare Provider	Carlina Nash	1805 4th Ave SE, Cedar Rapids, IA 52403
Childcare Provider	Carmen Walton	1828 Rosehill Dr SW, Cedar Rapids, IA 52404
Childcare Provider	Carol Street-Lurth	820 N St SW, Cedar Rapids, IA 52404
Childcare Provider	Cathenia Offerman	2025 K St SW, Cedar Rapids, IA 52404
Childcare Provider	Cedar Valley Montessori School	110 5th Ave SE, Cedar Rapids, IA 52401
Childcare Provider	Chantal Nyandorimana	5016 1st Ave NW Apt 3, Cedar Rapids, IA 52405
Childcare Provider	Charlina Hurt	1730 Sierra Dr NE, Cedar Rapids, IA 52402
Childcare Provider	Chasidy Gustafson	1407 4th Ave SE, Cedar Rapids, IA 52403
Childcare Provider	Cheryl Mayfield	311 Norman Dr NE, Cedar Rapids, IA 52402
Childcare Provider	Children's Corner	4750 42nd St NE, Cedar Rapids, IA 52411

Childcare Provider	Christina Stearns	328 37th St NE, Cedar Rapids, IA 52402
Childcare Provider	Cinthia Jessee	8007 Turtlerun Dr NE, Cedar Rapids, IA 52402
Childcare Provider	College Community Early Childhood Center	401 76th Ave SW, Cedar Rapids, IA 52404
Childcare Provider	College Community ECC-Prairie Crest	401 76th Ave SW, Cedar Rapids, IA 52404
Childcare Provider	Collins Aerospace Day Academy	1215 Skylee Blvd NE, Cedar Rapids, IA 52402
Childcare Provider	Kids Inc-C Street	6340 Muirfield Dr SW, Cedar Rapids, IA 52404
Childcare Provider	Kids Kampus Learning Center inc.	5150 Blairs Forest Way NE, Cedar Rapids, IA 52402
Childcare Provider	KidsPoint C Street	5830 C St SW, Cedar Rapids, IA 52404
Childcare Provider	KidsPoint Cleveland	2200 First Ave NW, Cedar Rapids, IA 52405
Childcare Provider	KidsPoint Downtown Learning Center and Preschool	318 5th St SE, Cedar Rapids, IA 52401
Childcare Provider	KidsPoint Erskine	600 36th St SE, Cedar Rapids, IA 52403
Childcare Provider	KidsPoint Garfield	1201 Maplewood Dr NE, Cedar Rapids, IA 52402
Childcare Provider	KidsPoint Hoover	4141 Johnson Ave NW, Cedar Rapids, IA 52405
Childcare Provider	KidsPoint Jackson	1300 38th St NW, Cedar Rapids, IA 52405
Childcare Provider	KidsPoint Kenwood	3700 E Ave NE, Cedar Rapids, IA 52402
Childcare Provider	KidsPoint Madison	1341 Woodside Dr NW, Cedar Rapids, IA 52405
Childcare Provider	KidsPoint Pierce	4343 Marilyn Dr NE, Cedar Rapids, IA 52402
Childcare Provider	Kim Wink	221 Cherry Hill Rd SW, Cedar Rapids, IA 52404
Childcare Provider	KinderCare Learning Center #292	5351 N Park Pl NE, Cedar Rapids, IA 52402
Childcare Provider	KinderCare West #291	310 Burdette Dr SW, Cedar Rapids, IA 52404
Childcare Provider	Kingdom Kids Childcare LLC	,3511 Oakland Road NE, Cedar Rapids, IA 52402
Childcare Provider	La Petite Academy	1350 Blairs Ferry Rd NE, Cedar Rapids, IA 52402
Childcare Provider	Leah Ngendakumana	340 Lewellen Dr NW, Cedar Rapids, IA 52405
Childcare Provider	Lennora White and Maggie Greenhaw	1427 4th Ave SE, Cedar Rapids, IA 52403
Childcare Provider	Lily Pad 3.0	1500 Boyson Rd NE, Cedar Rapids, IA 52402
Childcare Provider	Lily Pad Day Care and Preschool	6880 Council St NE, Cedar Rapids, IA 52402
Childcare Provider	Linda Robinson	305 Trailridge Rd SE, Cedar Rapids, IA 52403
Childcare Provider	Linn County Child Development Center	1020 6th St SE, Cedar Rapids, IA 52401
Childcare Provider	Tami Franck	5321 Bowe Ct SW, Cedar Rapids, IA 52404
Childcare Provider	Tammy Christofferson	5100 Skyline Dr NW, Cedar Rapids, IA 52405
Childcare Provider	Tarra Stangl DBA The Growing Patch	1915 29th St NW, Cedar Rapids, IA 52405
Childcare Provider	Teddy Bear Child Care Center Inc	2730 Bowling St SW, Cedar Rapids, IA 52404

Childcare Provider	Tenisha Lambert	16 36th Ave SW, Cedar Rapids, IA 52404
Childcare Provider	The Arc of East Central Iowa- Daycare Enrichment	680 2nd St SE, Cedar Rapids, IA 52401
Childcare Provider	The Arc of East Central Iowa- Summer Day	4545 Wenig Rd NE, Cedar Rapids, IA 52402
Childcare Provider	The Cedar Rapids Day School	615 1st Ave SE, Cedar Rapids, IA 52402
Childcare Provider	The Salvation Army Summer Day Camp	1000 C Ave NW, Cedar Rapids, IA 52405
Childcare Provider	Thelma Anderson	1603 7th Ave SE, Cedar Rapids, IA 52403
Childcare Provider	Tracy Ehlert	411 Hanover Rd SW, Cedar Rapids, IA 52404
Childcare Provider	Trinity Lane Preschool	215 21st Ave SW, Cedar Rapids, IA 52404
Childcare Provider	Trinity Lutheran School Child Care	1361 7th Ave SW, Cedar Rapids, IA 52404
Childcare Provider	Crystal McMurray	611 27th St NE, Cedar Rapids, IA 52402
Childcare Provider	Das Diamonds Daycare	1226 N St SW, Cedar Rapids, IA 52404
Childcare Provider	Debra Vogel	2720 Bryant Blvd SW, Cedar Rapids, IA 52404
Childcare Provider	Denia Davis	1727 C Ave NE, Cedar Rapids, IA 52402
Childcare Provider	Diana Roberts	4825 Fruitwood Lane NW, Cedar Rapids, IA 52405
Childcare Provider	Donna Hargrove	226 11th St NW, Cedar Rapids, IA 52405
Childcare Provider	Dorothy Knoke	1109 8th St NW, Cedar Rapids, IA 52405
Childcare Provider	Edith Kendall	4209 Sherman St NE, Cedar Rapids, IA 52402
Childcare Provider	Elease Jones	416 16th St SE, Cedar Rapids, IA 52403
Childcare Provider	Mary Dabler	5121 Waterhouse Ln, Cedar Rapids, IA 52411
Childcare Provider	MaryJane Viktora	4101 16th Ave SW Lot 49a, Cedar Rapids, IA 52404
Childcare Provider	Melissa Frondle	1517 9th Ave SW, Cedar Rapids, IA 52404
Childcare Provider	Metro Parent Child Center	1212 7th St SE, Cedar Rapids, IA 52401
Childcare Provider	Michelle Osborn	260 Lynda Dr NW, Cedar Rapids, IA 52405
Childcare Provider	Mlasi Bushiri	1554 Bever Ave SE, Cedar Rapids, IA 52403
Childcare Provider	Mother Goose Daycare and Preschool - Cedar Rapids	4840 Richmar Ct NW, Cedar Rapids, IA 52405
Childcare Provider	Mukobwa Uwimana	3630 12th Ave SW Apt W2, Cedar Rapids, IA 52404
Childcare Provider	Lisa Alterbal	251 Miller Ave SW, Cedar Rapids, IA 52404
Childcare Provider	Little Cupcakes Child Care, LLC	215 Edgewood Rd SW, Cedar Rapids, IA 52404
Childcare Provider	Little GEM Learning Center	430 16th Ave SW, Cedar Rapids, IA 52404
Childcare Provider	Lori Franck	1316 Harold Dr SE, Cedar Rapids, IA 52403
Childcare Provider	Love and Hope Christian Day- Care Home	504 C Ave NW, Cedar Rapids, IA 52405
Childcare Provider	Lovely Lane Preschool and Daycare	2424 42nd St NE, Cedar Rapids, IA 52402
Childcare Provider	Lucretia Arnold	4501 Benton St NE, Cedar Rapids, IA 52402
Childcare Provider	Maombi Roussi	2505 Vicksburg St SW, Cedar Rapids, IA 52404
Childcare Provider	Marcelline Nahoza	2002 Williams Blvd SW, Cedar Rapids, IA 52404
Childcare Provider	Margie's Merry Munchkins	3912 E Ave NE, Cedar Rapids, IA 52402
Childcare Provider	Marichu Villanueva	1831 Rosehill Dr SW, Cedar Rapids, IA 52404
Childcare Provider	Wanda Johnson	60 Summer Cir NE, Cedar Rapids, IA 52402

Childcare Provider	We Care Daycare Inc	1445 Mt Vernon Rd SE, Cedar Rapids, IA 52403
Childcare Provider	We Teach 2	4370 16th Ave SW, Cedar Rapids, IA 52404
Childcare Provider	Wee Care Daycare	3224 Ravenwood Ter NW, Cedar Rapids, IA 52405
Childcare Provider	Wivine Rumwaga	417 Owen St NW, Cedar Rapids, IA 52405
Childcare Provider	YMCA-Stoney Point	300 Stoney Point Road SW, Cedar Rapids, IA 52404
Childcare Provider	YMCA-Truman Elementary Site	441 W Post Rd NW, Cedar Rapids, IA 52405
Childcare Provider	YMCA-Van Buren	2525 29th St SW, Cedar Rapids, IA 52404
College	Kirkwood Community College	Kirkwood Community College, Cedar Rapids, IA
College	Coe College	Coe College, Cedar Rapids, IA
College	Mount Mercy University	Mount Mercy University, Cedar Rapids, IA
Family Support Specialists	Abbe Community Mental Health - Outreach Team	520 11th St. NW, Cedar Rapids, IA
Family Support Specialists	Four Oaks Family and Children Services - Integrated Health Home	Cedar Rapids, IA
Family Support Specialists	Tanager - Integrated Health Home	1030 5th Ave SE Suite 100 Cedar Rapids IA 52403, Cedar Rapids, IA
Library	Cedar Rapids Public Library	450 Fifth Ave SE, Cedar Rapids, IA 52401
Library	Ladd Library	Westdale Mall, 2600 Edgewood Rd.,sw, Cedar Rapids, IA 52404
Park	Rock Island Botanical Preserve	4501 Preserve Ln, Cedar Rapids, IA 52411
Place of Worship	Seventh Day Church of God	3103 Pioneer Ave SE, Cedar Rapids, IA 52403
Place of Worship	Trinity Lutheran Church	1363 1st Ave SW, Cedar Rapids, IA 52405
Place of Worship	First Church of the Open Bible	1911 E Ave NW, Cedar Rapids, IA 52405
Place of Worship	Word of Faith Pentecostal Church	2325 16th Ave SW, Cedar Rapids, IA 52404
Place of Worship	Sharon United Methodist Church	1809 9th St SW, Cedar Rapids, IA 52404
Place of Worship	Church of the King	3750 F Ave NW, Cedar Rapids, IA 52405
Place of Worship	Edgewood Baptist Church	1900 F Ave NW, Cedar Rapids, IA 52405
Place of Worship	First Presbyterian Church	310 5th St SE, Cedar Rapids, IA 52401
Place of Worship	Asbury United Methodist Church	350 27th Ave SW, Cedar Rapids, IA 52404
Place of Worship	Saint Marks United Methodist Church	4700 Johnson Ave NW, Cedar Rapids, IA 52405
Place of Worship	Hispanic Ministry	857 3rd Ave SE, Cedar Rapids, IA 52403
Place of Worship	New Creation United Methodist Church	3715 33rd Ave SW, Cedar Rapids, IA 52404
Place of Worship	Holy Redeemer Lutheran Church	720 Edgewood Rd NW, Cedar Rapids, IA 52405
Place of Worship	Saint Pauls United Methodist Church	1340 3rd Ave SE, Cedar Rapids, IA 52403
Place of Worship	Iowa Church of God in Christ	Cedar Rapids, IA 52403
Place of Worship	Christ Presbyterian Church	2000 1st Ave NW, Cedar Rapids, IA 52405
Place of Worship	Word of God Lutheran Church	1515 29th St NE, Cedar Rapids, IA 52402
Place of Worship	Calvary Baptist Church	5338 Johnson Ave SW, Cedar Rapids, IA 52404
Place of Worship	Ellis Park Church of God	2260 Edgewood Rd NW, Cedar Rapids, IA 52405
Place of Worship	First Church of the Nazarene	3113 1st Ave SW, Cedar Rapids, IA 52405
Place of Worship	Olivet Presbyterian Church	237 10th St NW, Cedar Rapids, IA 52405

Place of Worship	Grace Brethren Church	Cedar Rapids, IA 52402
Place of Worship	New Jerusalem Church of God in Christ	631 9th Ave SE, Cedar Rapids, IA 52401
Place of Worship	Central Church of Christ	1500 1st Ave NW, Cedar Rapids, IA 52405
Place of Worship	Church of God of Prophecy	3211 Edgewood Rd SW, Cedar Rapids, IA 52404
Place of Worship	Central Park Presbyterian Church	1285 3rd Ave SE, Cedar Rapids, IA 52403
Place of Worship	Saint Judes Church	50 Edgewood Rd NW, Cedar Rapids, IA 52405
Place of Worship	Hus Memorial Presbyterian Church	2808 Schaeffer Dr SW, Cedar Rapids, IA 52404
Place of Worship	Gloria Dei Lutheran Church	153 Cherry Hill Rd NW, Cedar Rapids, IA 52405
Place of Worship	Hope Lutheran Church	2736 Bowling St SW, Cedar Rapids, IA 52404
Place of Worship	All Saints Catholic Church	720 29th St SE #2, Cedar Rapids, IA 52403
Place of Worship	Saint Ludmilas Church	211 21st Ave SW, Cedar Rapids, IA 52404
Place of Worship	Cedar Hills Evangelical Free Church	6455 E Ave NW, Cedar Rapids, IA 52405
Place of Worship	Bethany Lutheran Church	2202 Forest Dr SE, Cedar Rapids, IA 52403
Place of Worship	Shekinah Glory Missionary Church	Cedar Rapids, IA 52404
Place of Worship	Hillside Wesleyan Church	2600 1st Ave NW, Cedar Rapids, IA 52405
Place of Worship	Westminster Presbyterian Church	1285 3rd Ave SE, Cedar Rapids, IA 52403
Place of Worship	Fellowship Missionary Baptist Church	1030 7th St SE, Cedar Rapids, IA 52401
Place of Worship	Eden United Church of Christ	Cedar Rapids, IA 52404
Place of Worship	Church of God of Cleveland	Cedar Rapids, IA 52402
Place of Worship	Cedar Christian Church	526 3rd Ave SW, Cedar Rapids, IA 52404
Place of Worship	Saint Patricks Church	120 5th St NW, Cedar Rapids, IA 52405
Place of Worship	Cedar Hills Community Church	6455 E Ave NW, Cedar Rapids, IA 52405
Place of Worship	Trinity United Methodist Church	1430 Ellis Blvd NW, Cedar Rapids, IA 52405
Place of Worship	Concordia Lutheran Church	4210 Johnson Ave NW, Cedar Rapids, IA 52405
Place of Worship	Central Assembly of God Church	3030 F Ave NW, Cedar Rapids, IA 52405
Place of Worship	Poe Chapel	1221 1st Ave SW, Cedar Rapids, IA 52404
Place of Worship	Immaculate Conception Catholic Church	857 3rd Ave SE, Cedar Rapids, IA 52403
Place of Worship	Immanuel Baptist Church	1900 F Ave NW, Cedar Rapids, IA 52405
Place of Worship	Calvin-Sinclair Presyterian Church	715 38th St SE, Cedar Rapids, IA 52403
Place of Worship	Saint James United Methodist Church	1430 Ellis Blvd NW, Cedar Rapids, IA 52405
Place of Worship	Good News Baptist Church	1203 3rd Ave SW, Cedar Rapids, IA 52404
Place of Worship	Grace Episcopal Church	525 A Ave NE, Cedar Rapids, IA 52401
Place of Worship	Marantha Bible Church	526 3rd Ave SW, Cedar Rapids, IA 52404
Place of Worship	Saint Wenceslaus Church	1224 5th St SE, Cedar Rapids, IA 52401
Place of Worship	Fathers House Vineyard Christian Church	Cedar Rapids, IA 52401
Place of Worship	Hope Church	2736 Bowling St SW, Cedar Rapids, IA 52404
Place of Worship	Cedar Bible Church	3636 Cottage Grove Ave SE, Cedar Rapids, IA 52403

Place of Worship	Spirit of Faith Family Church	4070 22nd Ave SW, Cedar Rapids, IA 52404
School (K-12)	Thomas Jefferson High School	1243 20th St SW , Cedar Rapids, IA 52404
School (K-12)	John F Kennedy High School	4545 Wenig Rd NE , Cedar Rapids, IA 52405
School (K-12)	George Washington High School	2205 Forest Dr SE, Cedar Rapids, IA 52403
School (K-12)	Metro High School	1212 7th St SE, Cedar Rapids, IA 52401
School (K-12)	Cedar Rapids Virtual Academy	2500 Edgewood Rd, Cedar Rapids, IA 52405
School (K-12)	Franklin Middle School	300 20th St NE, Cedar Rapids, IA 52402
School (K-12)	Harding Middle School	4801 Golf St NE , Cedar Rapids, IA 52405
School (K-12)	McKinley STEAM Academy	620 10th St SE, Cedar Rapids, IA 52403
School (K-12)	Roosevelt Creative Corridor Business Academy	300 13th St NW, Cedar Rapids, IA 52405
School (K-12)	Taft Middle School	5200 E Ave NW, Cedar Rapids, IA 52405
School (K-12)	Wilson Middle School	2301 J St SW, Cedar Rapids, IA 52404
School (K-12)	Arthur Elementary School	2630 B Ave NE, Cedar Rapids, IA 52402
School (K-12)	Cleveland Elementary School	2200 1st Ave NW, Cedar Rapids, IA 52405
School (K-12)	Coolidge Elementary School	6225 1st Ave SW, Cedar Rapids, IA 52405
School (K-12)	Erskine Elementary School	600 36th St SE, Cedar Rapids, IA 52403
School (K-12)	Garfield Elementary School	1201 Maplewood Dr NE, Cedar Rapids, IA 52402
School (K-12)	Grant Wood Elementary School	645 26th St SE, Cedar Rapids, IA 52403
School (K-12)	Harrison Elementary School	1310 11th St NW, Cedar Rapids, IA 52405
School (K-12)	Hoover Elementary School	4141 Johnson Ave NW, Cedar Rapids, IA 52405
School (K-12)	Johnson STEAM Academy School	355 18th St SE, Cedar Rapids, IA 52403
School (K-12)	Kenwood Leadership Academy School	3700 E Ave NE, Cedar Rapids, IA 52402
School (K-12)	Madison Elementary School	1341 Woodside Dr NW, Cedar Rapids, IA 52405
School (K-12)	Pierce Elementary School	4343 Marilyn Dr NE, Cedar Rapids, IA 52402
School (K-12)	Cedar River Academy at Taylor	720 7th Ave SW, Cedar Rapids, IA 52404
School (K-12)	Truman Elementary School	441 West Post Rd NW, Cedar Rapids, IA 52405
School (K-12)	Van Buren Elementary School	2525 29th St SW, Cedar Rapids, IA 52404
School (K-12)	Grant Elementary School	254 Outlook Dr SW, Cedar Rapids, IA 52404
School (K-12)	Wright Elementary School	1524 Hollywood Blvd NE, Cedar Rapids, IA 52402
School (K-12)	Jackson Elementary School	1300 38th St NW, Cedar Rapids, IA 52405
School (K-12)	Viola Gibson Elementary School	6101 Gibson Dr NE , Cedar Rapids, IA 52411
School (K-12)	Prairie High School	401 76th Ave SW, Cedar Rapids, IA 52404
School (K-12)	Prairie Point	8015 Kirkwood Blvd, Cedar Rapids, IA 52404
School (K-12)	Prairie Creek	380 South Prairie Rd SW, Cedar Rapids, IA 52404
School (K-12)	Prairie Crest Elementary	301 76th Ave SW, Cedar Rapids, IA 52404
School (K-12)	Prairie Heights Elementary School	190 76th Ave SW, Cedar Rapids, IA 52404
School (K-12)	Prairie View Elementary School	251 Prairie Hill Ct SW, Cedar Rapids, IA 52404
School (K-12)	Prairie Ridge Elementary	278 South Prairie Rd SW, Cedar Rapids, IA 52404
School (K-12)	Prairie Hill Elementary School	151 Prairie Hill Ct SW, Cedar Rapids, IA 52404

School (K-12)	Prairie Early Childhood Center	125 Prairie Hill Ct SW, Cedar Rapids, IA 52404
School (K-12)	Prairie Edge	401 76th Ave SW, Cedar Rapids, IA 52404
School (K-12)	Bowman Woods Elementary School	151 Boyson Rd NE, Cedar Rapids, IA 52402
School (K-12)	All Saints School	720 29th St SE, Cedar Rapids, IA 52403
School (K-12)	Cedar Valley Christian School	3636 Cottage Grove SE, Cedar Rapids, IA 52403
School (K-12)	Xavier High School	6300 42nd Stne, Cedar Rapids, IA 52411
School (K-12)	St Matthew School	2244 1st Ave N.e., Cedar Rapids, IA 52402
School (K-12)	St Pius X School	4901 Council St., NE, Cedar Rapids, IA 52402-2402
School (K-12)	St Jude Center	3700 1st Avenue NW, Cedar Rapids, IA 52405
School (K-12)	Summit Schools Inc	1010 Regent St NE, Cedar Rapids, IA 52402
School (K-12)	Trinity Lutheran School	1361 7th Ave SW, Cedar Rapids, IA 52404-1831
School (K-12)	Regis Middle School	735 Prairie Dr. NE, Cedar Rapids, IA 52402
School (K-12)	LaSalle Middle School	3700 First Ave. NW, Cedar Rapids, IA 52405
School (K-12)	Isaac Newton Christian Academy	1635 Linmar Drive NE, Cedar Rapids, IA 52402
Workforce Development Center	Cedar Rapids IowaWORKS Office	Lindale Mall, 4444 1st Avenue NE, Suite #436, Cedar Rapids, IA, 52402