



Recovery Iowa - Bettendorf 360

August, 2022



Report provided to the Iowa Department of Public Health

This project was supported by the Iowa Department of Public Health, Bureau of Substance Abuse (IDPH) via a sub-ward from the Substance Abuse and Mental Health Services (SAMHSA) of the U.S. Department of Health and Human Services (HHS) as part of a financial assistance award totaling 350,000 with 100 percent funded by SAMHSA/HHS. The contents are those of the author(s) and do not necessarily represent the official views of, nor an endorsement by, IDPH, SMHSA/HHS, or the U.S. Government



Contents

1 Overview	3
2 What is Recovery?	3
3 What is a Recovery Community Center?	3
4 Is Your Community Recovery Ready?	4
5 What Peer Support Meetings are Available in Your Area?	5
6 What Recovery Resources Are Available in Your Area?	6
7 What Community Resources Are Available in Your Area?	7
8 Which Neighborhoods in Your Community Need Additional Health Resources and Support?	8
9 What's Driving Health Disparities in Your Community?	11
10 APPENDIX 1: Data Used in this Report	12
10.1 Recovery Ready Community Index (RRCI)	12
10.2 PSC Meeting Finder Tool	12
10.3 PSC Resource Recovery Tool	14
10.4 PSC Community Resource Locator Tool	15
10.5 Substance Use Vulnerability Index	16
10.6 Social Determinants of Health Index	18
11 Appendix 2: Peer Support Contacts in Your Area	19
12 Appendix 3: Recovery Resources in Your Area	19
13 Appendix 4: Community Resources in Your Area	20

Overview

At the request of the Iowa Department of Public Health, Bureau of Substance Abuse, the Public Science Collaborative (PSC) developed community-specific reports to support recovery efforts in Iowa. Recognizing the need to strengthen substance use recovery efforts throughout the state, we identified a large number of existing recovery-oriented resources in Bettendorf, which we describe and map in the pages that follow. We developed additional maps to identify at-risk neighborhoods that will benefit from targeted health interventions and additional community resources. For additional questions or information about this report, the data tools described, or the Public Science Collaborative, please reach out to the principal investigators of this study, Dr. Shawn Dorius at sdorius@iastate.edu, or Dr. Cassandra Dorius at cdorius@iastate.edu.

What is Recovery?

Though substance use recovery is an evolving concept that has been defined in a number of ways over the years, an emerging consensus is that recovery is a voluntary path toward improved personal well-being coupled with a diminished risk of substance use relapse. As noted by Bill White (2007):

Recovery is the experience through which individuals, families, and communities impacted by severe alcohol and other drug (AOD) problems utilize internal and external resources to voluntarily resolve these problems, heal the wounds inflicted by AOD related problems, actively manage their continued vulnerability to such problems, and develop a healthy, productive, and meaningful life.

In White's view, resources help individuals, families, and communities in two ways. First, they help address alcohol and other drug-related problems (for example, addiction, unemployment, housing instability, family separation), and second, they support health, productivity, and meaning in post-treatment life. The appeal of this view is that it is explicit and direct in its recognition that recovery involves not only internal resources such as mental, emotional, and genetic factors but also external ones. In thinking about where to focus federal and state resources to develop a network of community-based recovery centers in Iowa, the key question is, "What kinds of external resources matter most for sustained SUD recovery?"

If we knew which resources were most helpful to long-run recovery, we could target towns and cities with large stocks of 'recovery resources' to grow Recovery Community Centers

What is a Recovery Community Center?

Recovery Community Centers (RCCs) represent low-cost, member-driven, voluntarist, locally managed, and community-engaged pathways to sustainable recovery for people with substance use disorder, or SUD. RCCs accomplish these goals by linking people to existing resources and infrastructure and promoting a vibrant recovery culture based in a **physical community center where people in recovery can visit, engage with others in recovery, and access resources**. RCCs are an innovative, safe, and helpful source of community recovery support that provides linkages to existing local services and resources that support recovery for people with a substance use or mental health disorder. RCCs support recovery by helping people in the community who have a history of substance use to develop recovery capital, the personal resources that enable people to live healthy, productive, and community engaged lives. RCCs do this by connecting members of the recovery community, called peers, with different types of services such as recovery coaching, medication assisted treatment, connection to employment services and child care, recovery-oriented housing, or education and workforce development training services. Located in the heart of the community, Recovery Community Centers improve the ability of the local recovery community to care for one another, and they also help destigmatize the lives of people in recovery.

The RCC model of recovery is validated by academic studies and is promoted by both the SUD community and public health officials. However, finding the right communities for RCC development in Iowa has proven difficult, underscoring the fact that Iowa is one of just a few states in the U.S. that has yet to adopt the recovery community model.

Is Your Community Recovery Ready?

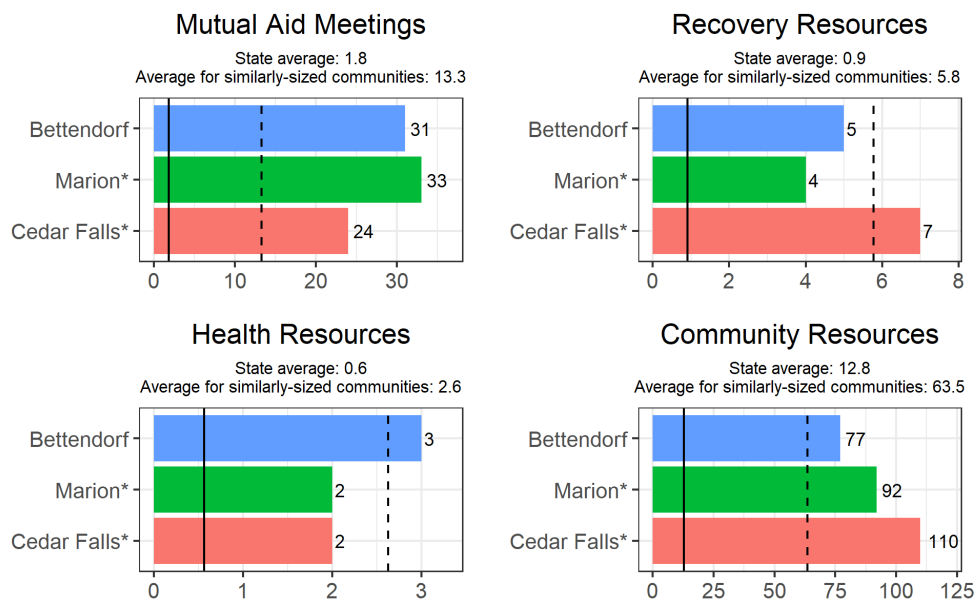
What is the RRCI and how was it created? We consulted scientific literature on substance use recovery and engaged key stakeholders who work directly with people in recovery around the country and in Iowa. This helped us to identify 17 unique community-based resources that we collected for almost all of Iowa’s 944 cities and towns. In total, we found nearly 16,000 community features that support recovery. We mapped and analyzed these resources so we could identify a short list of ‘Recovery Ready’ communities across the state, culminating in the first-of-its-kind index: **The Recovery Ready Community Index (RRCI)**.

The RRCI encompasses four dimensions: breadth, depth, size, and strength. Breadth of recovery resources was measured by counting the number of different types of recovery resources in each county and community. For example, counting if there is at least one hospital, one treatment center, and one drug drop off location in town. Depth of recovery resources was measured by first counting the total number of resources in each category and then ranking cities accordingly. This gives added importance to places that have, for example, more than one medication assisted treatment provider and many different recovery houses in town. Size of local recovery culture was measured by the total number of weekly mutual aid and peer support meetings per week in each city (e.g. total number of NA and AA meetings). Finally, the strength of the recovery community was measured as the difference between the total number of weekly peer support meetings and the number of meetings expected, based upon the total population of each town. These four dimensions were used to create the Recovery Ready Community Index. The RRCI is the simple average of each town’s ranking across the four dimensions or recovery readiness. Places that ranked high on all four dimensions are labeled as especially recovery ready.

How recovery ready is your community? Are you well-positioned to support a Recovery Community Center in your community? Relative to all cities, Bettendorf ranks low in terms of its recovery readiness. **According to the Recovery Ready Community Index (RRCI), Bettendorf scored 54.75, placing it at 37th when compared with other Iowa cities** (Iowa’s RRCI state average is 32.7).

Another way to understand recovery resources in Bettendorf is to compare them with those of the state average and other communities of similar size. This comparison is displayed in Figure 1, which compares Bettendorf with Marion and Cedar Falls. An average across all Iowa towns as well as the subset having a comparable population level are also included as a baseline for comparison.

Fig. 1. Recovery Ready Community Index: Comparison of Bettendorf to Other Iowa Communities on ‘Recovery Readiness’



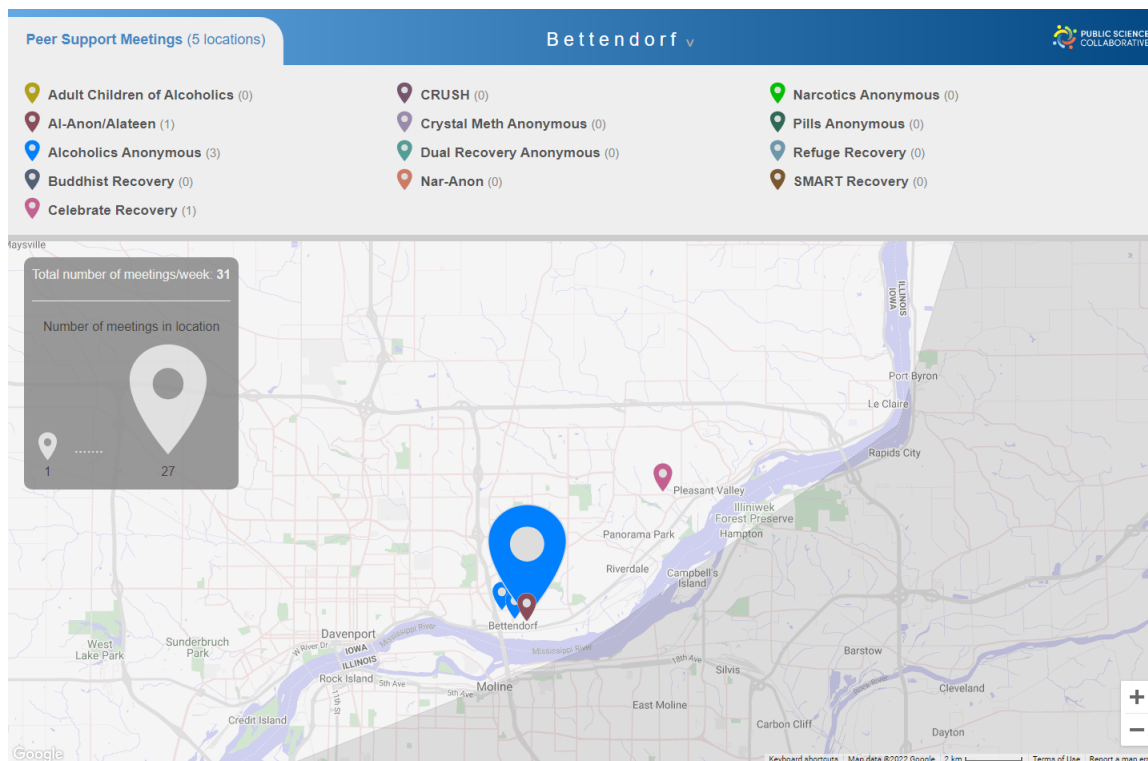
* The Iowa cities most comparable to Bettendorf by population are Marion and Cedar Falls.

** The solid vertical line represents the average for all 944 communities in Iowa and the dashed vertical line represents the average for Iowa communities with populations between 10,000 and 49,999 people.

What Peer Support Meetings are Available in Your Area?

Recovery meetings, such as Alcoholics and Narcotics Anonymous, play a significant role in facilitating the recovery process. Despite the importance of these meetings there is no coherent ‘one stop shop’ to find the meeting you need, when you need it. People usually need to go through several steps, such as searching for meetings on Google, or looking for a specific meeting time or place on a local listings’website. It can be hard enough to connect with peer support during the best of times, but doubly difficult when you are in crisis and questioning your recovery. Magnifying the challenge of finding the right meeting at the right time is being new to a community, unfamiliar with the members of a local meeting, and being in a moment of duress.

Fig. 2. Peer Support Meetings in Bettendorf



Note: Larger markers indicate the locations that host more than one meeting per week. For example, in Bettendorf there are 30 total meetings hosted each week in the locations identified above.

We developed the PSC Meeting Finder tool above to make it easier to find local meetings. We do this by presenting a map-based list of meetings all throughout Iowa and we update the map every single day. It’s a simple interface that helps people to find the appropriate meetings nearby, right now. Users can filter meetings by time of day, day of week, or whether childcare is available, for example, to find the right meeting at the right time. Having a responsive design, PSC Meeting Finder Tool runs efficiently and quickly on many different kinds of computers and mobile devices such as smartphones. Figure 2 is a screen capture of the PSC Meeting Finder where you can see the location of all known peer support meetings in your community. A web version of this map is available at: <http://public-science.org/reportmaps/meetings/?city=Bettendorf>. Note that the peer support data is updated regularly and may not exactly match Figure 2. A full listing of these resources is provided as a table with meeting, type, group name, number of meetings per week, and location of meetings in Appendix 2.

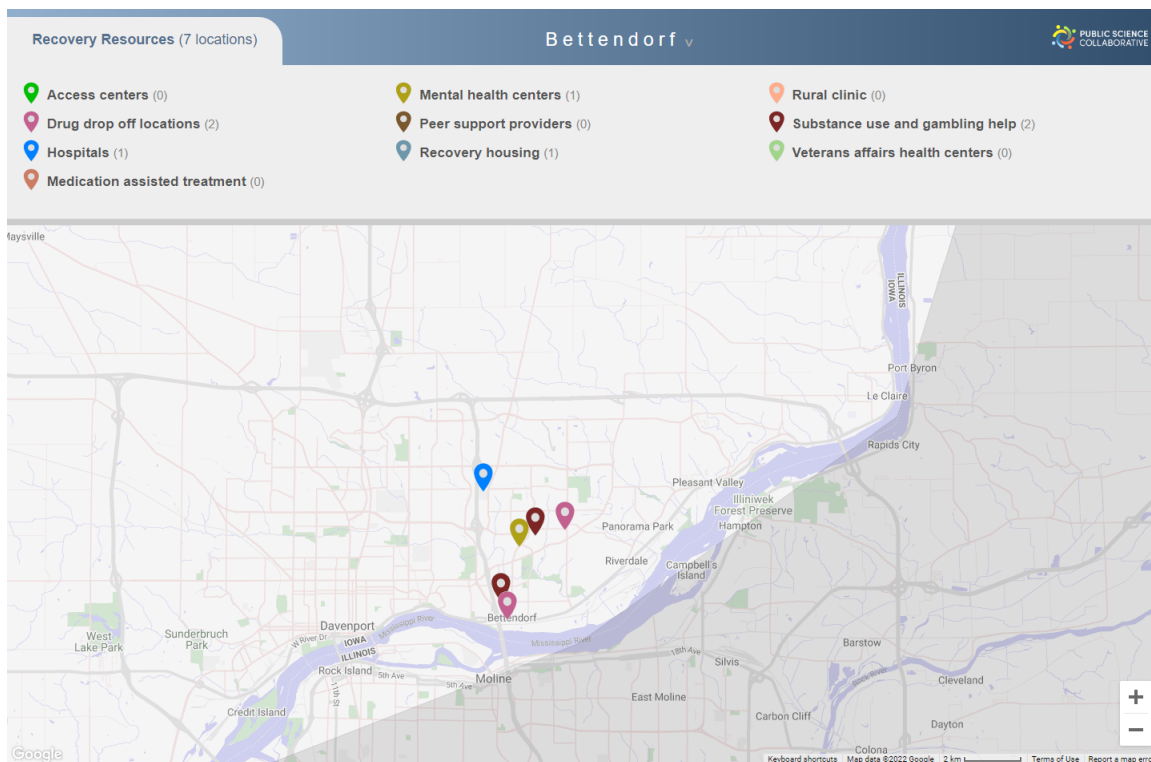
Bettendorf has about 30 peer support meeting locations in a given week. Figure 2. indicates the location of these meetings as well as locations where there are few or no weekly meetings, which may help local peer support groups to identify new places to sponsor a meeting and support local recovery. The number of meetings held by each group is tabulated in the top panel of this figure indicating the prominence of different peer support organizations in the community.

What Recovery Resources Are Available in Your Area?

Despite their importance, community-based recovery resources can be hard to find. Whether a person is new to the community or a long-term resident, some resources remain unknown to many people in the community. The PSC Recovery Resource Locator aims to help solve this problem. Figure 3 is a screen capture of the PSC Recovery Resource Locator where you can see the location of some of the resources your community offers to its recovery community. A web version of this map is available at: <http://public-science.org/reportmaps/recoveryresources/?city=Bettendorf>. A full listing of these resources is provided as a table with resource name, type, and location in Appendix 3.

Bettendorf has 8 recovery resources available to support its residents in recovery from substance use disorders. These resources provide a variety of services and care to respond to the needs of individuals in the community. Drug drop off locations allow individuals to dispose of their unneeded prescription drugs to limit abuse of these substances. Medication assisted therapy helps alleviate withdrawal symptoms for individuals in recovery. Mental health resources are also an important resource in helping treat mental health challenges associated with SUD. Mutual aid and recovery housing groups are designed to provide a community of support to help address the material needs of people using substances. Finally, SUD treatment facilities and Veterans Affairs health clinics provide medical care to individuals using substances. These resources and others like them are tabulated in the top panel of Figure 3 to provide insight into strong and weak areas in community recovery resources.

Fig. 3. *Recovery Resources in Bettendorf*

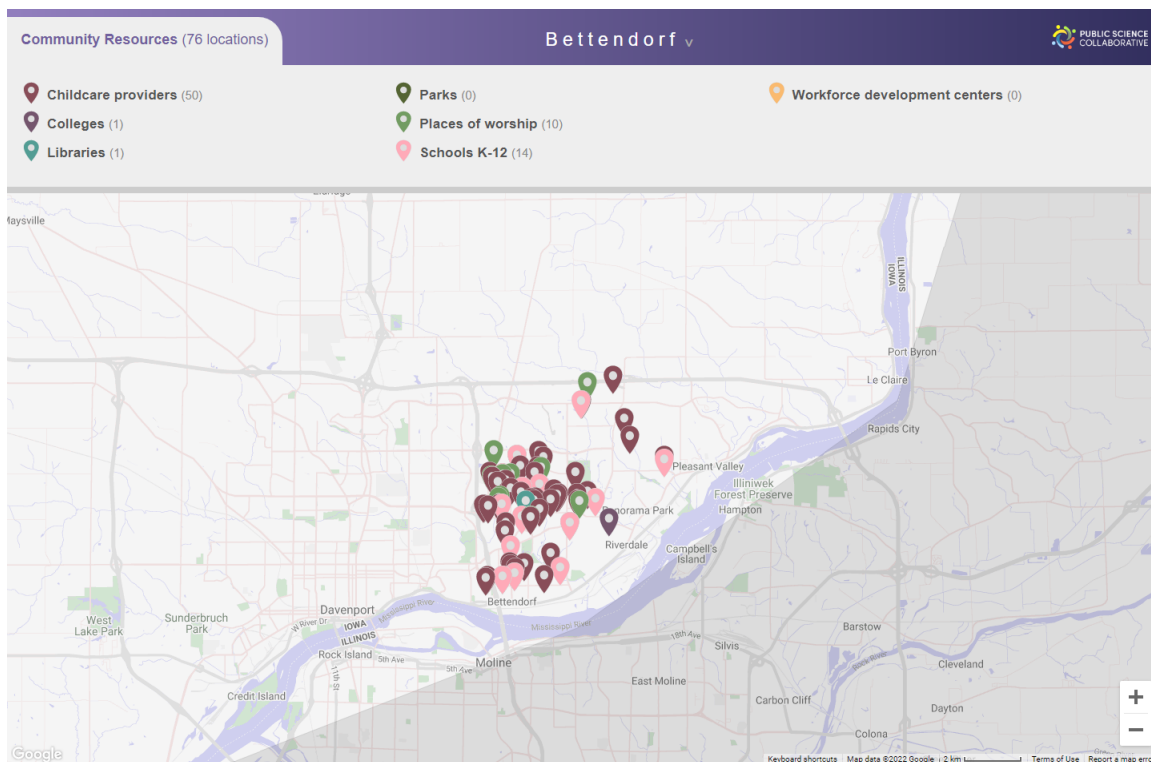


What Community Resources Are Available in Your Area?

In addition to peer support meetings and clinical care, people in recovery benefit from other community resources. For example, having easy access to parks and natural areas has been shown to support substance use recovery. Participation in community groups, including religious organizations, may be a source of strength and support for many people in recovery. We have identified many additional community assets that can help people in their own recovery journey. The state of Iowa has a wide range of public and private institutions and organizations dedicated to providing health and human services, support, and activities to improve quality of life and well-being of all Iowans. The PSC Community Resource Locator is a utility for discovering many of these resources. Figure 4 is a screen capture of the PSC Community Resource Locator where you can see the location of some of the resources your community offers to its recovery community. A web version of this map is available at: <http://public-science.org/reportmaps/communityresources/?city=Bettendorf>. A full listing of these resources is provided as a table with resource name, type, and location in Appendix 4.

Bettendorf has 77 community resources available for its residents to live their best lives and to support those in recovery from substance use disorders. These may include childcare providers, universities and technical colleges, libraries, parks, places of worship, K-12 schools, and workforce development centers. The number of each type of resource is broken down in Figure 4., highlighting areas of success and areas for growth in your community.

Fig. 4. *Community Resources in Bettendorf*

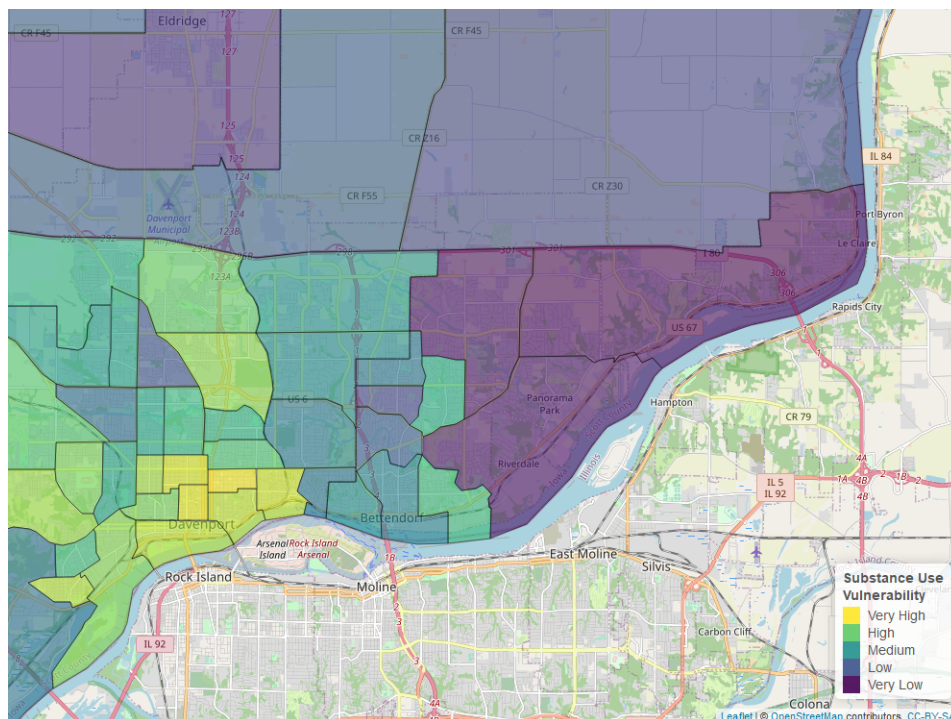


Which Neighborhoods in Your Community Need Additional Health Resources and Support?

The Public Science Collaborative has developed data resources to help community organizations, local governments, and public health practitioners to more effectively target substance use prevention, treatment, and recovery interventions to the places in greatest need of resources. Geographic ‘hot spots’ identify places where local residents are at especially high risk for substance use disorder. We estimated statistical models using administrative data from the Treatment Episode Admissions Dataset (TEDS-A) and the National Survey of Drug Use and Health (NSDUH) to measure significant relationships between substances of misuse and socio-demographic characteristics known to affect health equity and substance use vulnerability. Neighborhood characteristics associated with each substance (e.g. methamphetamine, benzodiazepines) were overlaid with Census Bureau estimates of these same neighborhood characteristics, by census tract. Once mapped, these data help us to identify places with especially high concentrations of at-risk characteristics in need of targeted resources to reduce health inequities. You can learn more about the underlying models for this index in Appendix 1. The resulting maps are included in the pages that follow, and interactive maps can be found online at https://publicsciencecollaborative.shinyapps.io/iowa_sdoh/ and https://publicsciencecollaborative.shinyapps.io/ia_substance_use_vulnerability/.

Towns and cities in Iowa typically have neighborhoods with distinctive risk profiles, with some at especially high (or low) risk of harmful use of a specific substance, such as Heroin, Opioids, or Methamphetamine. Identification of these locations can guide public health outreach efforts and enable more targeted, substance-specific interventions based upon known neighborhood risk factors. To do so, we have developed a city map to identify overall substance use vulnerability, which can be used to support generalized substance use prevention, treatment, and recovery interventions (Figure 5). Maps pertaining to Opioid, Heroin, and Methamphetamine use are included to help identify trends specific to these specific drugs (Figures 6, 7, 8). Typically, areas high in overall substance use vulnerability are also high in substance use. When this is the case, it suggests that general health resources would benefit these places and their residents. If a particular neighborhood is high in a specific substance, drug-specific interventions may be an effective tool in supporting the area.

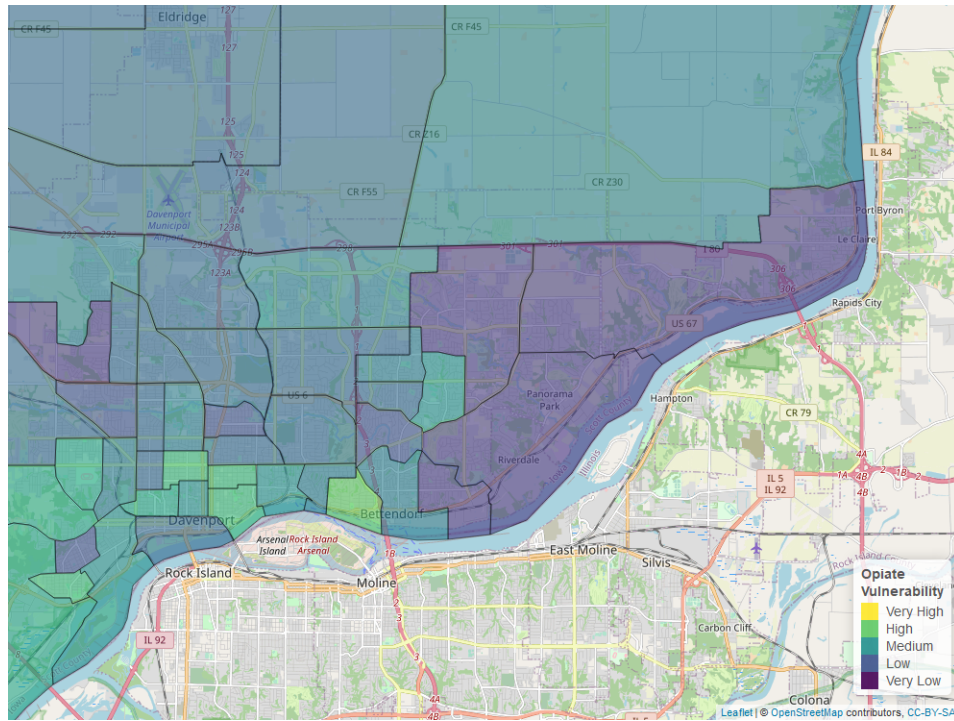
Fig. 5. *Neighborhood Vulnerability Index, All Substance Use*



Overall substance use vulnerability varies by neighborhood in Bettendorf, but is generally about equal to other communities in Iowa (see Figure 5). Due to neighborhood vulnerability, specific neighborhoods may benefit from a targeted approach rather than community wide efforts. Community-wide vulnerability was highest for

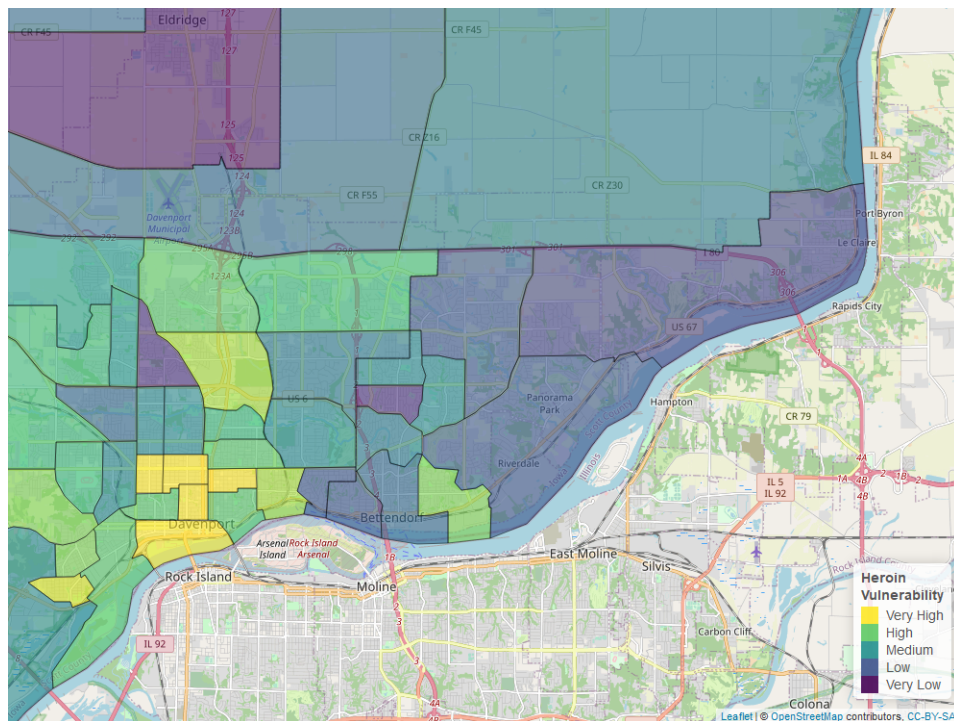
heroin, and a breakdown for each substance is shown in the figures below.

Fig. 6. Neighborhood Vulnerability Index, Opioid Use



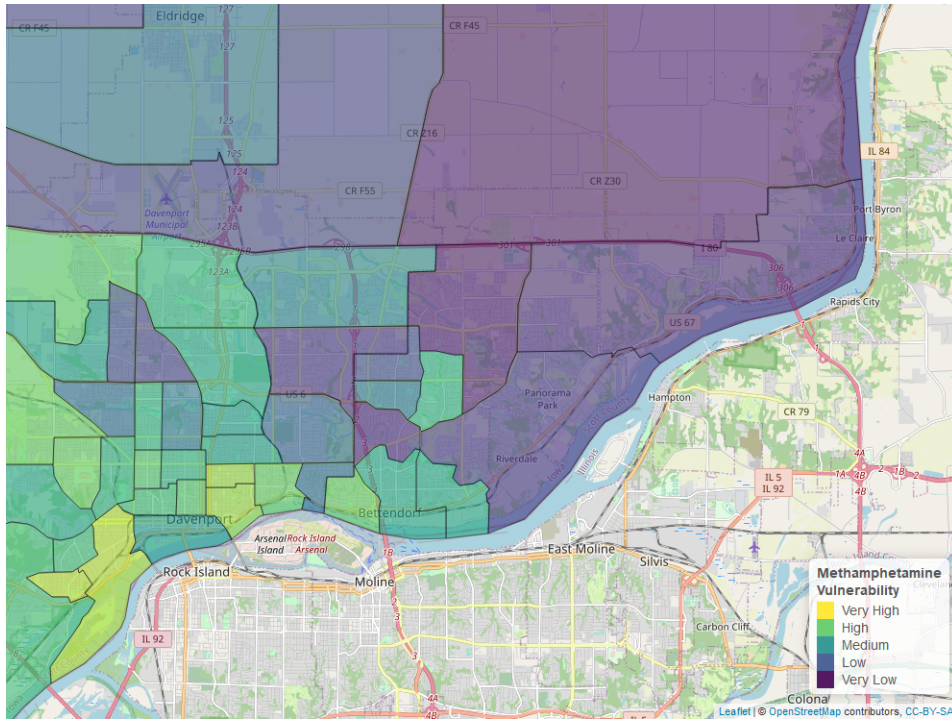
The overall opioid risk in Bettendorf is lower than the average for communities in Iowa (see Figure 6).

Fig. 7. Neighborhood Vulnerability Index, Heroin Use



The overall heroin risk in Bettendorf is about equal to the average for communities in Iowa (see Figure 7).

Fig. 8. Neighborhood Vulnerability Index, Methamphetamine Use

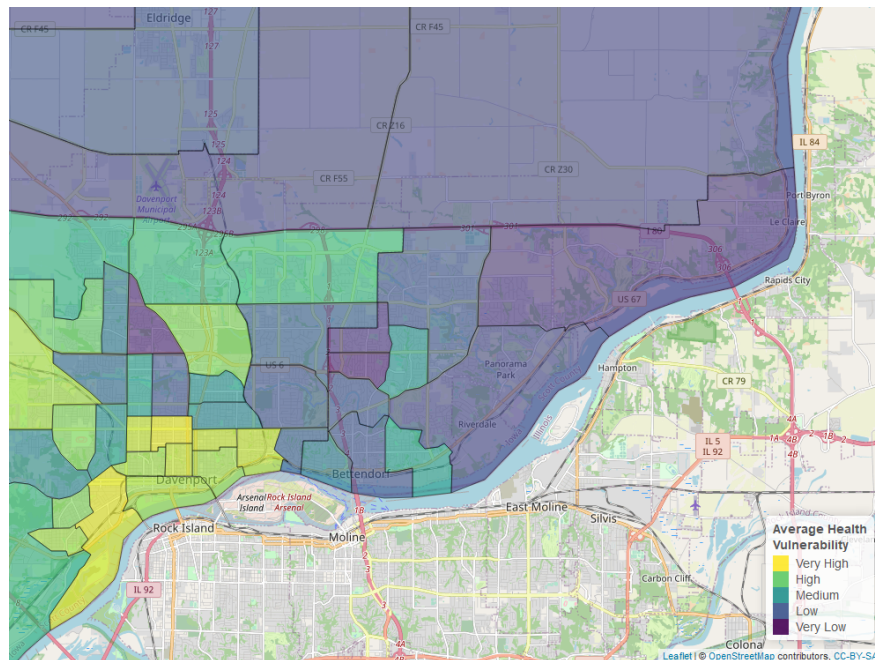


The overall meth risk in Bettendorf is about equal to the average for communities in Iowa (see Figure 8).

What's Driving Health Disparities in Your Community?

In addition to the neighborhood vulnerability maps above, the Public Science Collaborative created a neighborhood map to understand health disparities in Bettendorf that draws on well-established social determinants of health. By social determinants, we refer to health risks that are social in origin and tend to be unevenly distributed within a city or town. For example, in places with high average levels of education and low unemployment rates, residents tend to also have better overall health (e.g. longer life span and more healthy years of living). In places where average incomes are low and the rates of single parenting are high, people often have worse health, including higher death rates due to overdose and fewer healthy days. Knowing something about where the social determinants of health support well being and where their scarcity decreases well being can help local community organizations and governments to better target investments to reduce health disparities between neighborhoods.

Fig. 9. *Neighborhood-Level Health Disparities, Social Determinants*



According to the social determinants we considered, lack of English is the biggest risk factor for poor health and between neighborhood health disparities in Bettendorf. Overall, health risks in Bettendorf are about equal to the average for communities in Iowa.

APPENDIX 1: Data Used in this Report

10.1 Recovery Ready Community Index (RRCI)

Data Tool:	Recovery Ready Community Index
Data:	Data: PSC Meeting Finder Tool data; PSC Recovery Resources Locator Tool data; PSC Community Resources Tool data, U.S. Census Bureau American Community 5-year Estimates (ACS), 2015-2019

The Recovery Ready Community Index was designed to give a holistic view of a community’s “recovery readiness” and their ability to support people in recovery. The RRCI is constructed with four sub-measures: Breadth of Recovery Resources, Depth of Recovery Resources, Size of Recovery Culture, and Strength (Vibrancy) of Recovery Culture. You can read more about how the RRCI was developed on page two of this report. The specific recovery and community data collected to build the RRCI are detailed below and listed by name and source in Appendices 2, 3, and 4

10.2 PSC Meeting Finder Tool

Interactive Tool:	http://public-science.org/meetingfinder/
Data updated daily:	<i>Adult Children of Alcoholics, Al-Anon/Alateen, Alcoholics Anonymous (AA), Buddhist recovery, Celebrate Recovery, CRUSH, Crystal Meth Anonymous, Dual Recovery Anonymous, Nar-Anon, Narcotics Anonymous (NA), Pill Anonymous, Refuge Recovery, and SMART Recovery</i>

Under the hood, the PSC Meeting Finder Tool is a data pipelining system that fetches the information of the 13 different types of recovery meetings from their original sources, and integrates them into a state map (Following Figure). This system is composed of four major logical components: (1) automated robots that oversee and ‘scrape’ the peer-support websites for daily updates, (2) database infrastructure, (3) the web server infrastructure, and (4) PSC Meeting Finder web-based application. There are two types of automated program robots, called ‘bots’, utilized in this system: commander bots and scraper bots. The commander bot is in charge of running and logging the scraper bots, and reports to the system administrator when a scraper bot is unsuccessful. A scraper bot is in charge of scrapping the original listing websites, and populating the database with the cleaned data. The original listings might be unstructured and contain dirty data. It is the scraper bot’s duty to make sure that the data that is inserted into the database is clean and structured. These data are then pulled into the users’ browser by the PSC Meeting Finder Tool.

Table 1. *Peer Support Meeting Information for Bettendorf*

Name of Meeting	Web Resource	# of locations	# of meetings per week
Al-Anon/Alateen	https://al-anon.org	2	2
Alcoholics Anonymous	https://www.aa-iowa.org/	58	6
Celebrate Recovery	https://locator.ergroups.info	1	1

Recovery meetings data are gathered and cleaned from 13 web-based resources via our data pipeline system. Most of these resources utilize web scraping techniques (in Python by standard requests or packages such as Selenium and BeautifulSoup packages) as well as parsing PDF (Python: PyPDF2 package) files and XLS sheets (Python: csvkit). Table 1 identifies the name of the meeting, web resource, number of locations, and number of meetings per week.

Fig. 10. PSC Meeting Finder Tool - Under the Hood



10.3 PSC Resource Recovery Tool

Interactive Tool:

<http://public-science.org/recoveryresources>

Data updated yearly:

Iowa Office of Drug Control Policy; Wikipedia of Iowa hospitals; Iowa Department of Public Health; Recovery and Resilience Coordinator with AmeriCorpAllTreatment.com; TransitionalHousing.org; WomenSoberHousing.com; Addicted.org; Recovery.org; Drug-rehabs.org; Iowa Association of Rural Health Clinics; U.S. Department of Veterans Affairs

Recovery resources include access centers, drug drop off locations, hospitals, medication assisted treatment locations, mental health centers, peer support providers, recovery housing, rural clinics, SUD and problem gambling treatment locations, and Veterans Affairs health centers. To collect this data, we used a variety of public resources, including government agencies and recovery websites. Our collection of recovery resources is not necessarily exhaustive, but represents the data accessed through our initial effort and following the advice of substance use experts and researchers. This data was acquired through a variety of means, including simple downloads, manual data entry, computer reading of PDF files, and scraping websites. See the table below for the recovery resources data sources.

Table 2. *Recovery Resource Locator Tool Data Sources (Downloaded Sept 2020-May 2021)*

Resource	Data Source	Website Link
Access Centers	Manual Addition	
Drug Drop Off Locations	Iowa Office of Drug Control Policy	https://geodata.iowa.gov/datasets/rx-drop-off-locations-1?geometry=-101.674%2C40.504%2C-84.986%2C43.364
Hospitals	Wikipedia list of Iowa hospitals	https://en.wikipedia.org/wiki/List_of_hospitals_in_Iowa
Medication Assisted Treatment Locations	Iowa Department of Public Health	https://idph.iowa.gov/mat
Mental Health Centers	Iowa Department of Public Health	https://dhs.iowa.gov/sites/default/files/MHDDAccreditedProviders_32.pdf?082320201508
Recovery Housing	AllTreatment.com; TransitionalHousing.org; WomenSoberHousing.com; Addicted.org; Recovery.org; Drug-rehabs.org	AllTreatment.com;TransitionalHousing.org;WomenSoberHousing.com;Addicted.org;Recovery.org;Drug-rehabs.org
Rural Clinics	Iowa Association of Rural Health Clinics	https://iarhc.org/find-a-rural-health-clinic?view=map
SUD and Problem Gambling Treatment Locations	Iowa Department of Public Health	https://idph.iowa.gov/Portals/1/userfiles/166/Licensure/All%20Licensed%20Substance%20Use%20Disorder%20-%20Problem%20Gambling%20Program%27s%20List.pdf
Veterans Affairs Health Centers	U.S. Department of Veterans Affairs	https://www.va.gov/directory/guide/state.asp?STATE=IA&dnum=ALL

10.4 PSC Community Resource Locator Tool

Interactive Tool:

<http://public-science.org/communityresources>

Data updated yearly:

Iowa Department of Human Services; Wikipedia of Iowa colleges; Institute of Museum and Library Services, Public Libraries Survey; MyCountyParks.com; USGS Geographic Names Information System; Iowa Dept of Education; Iowa Workforce Development

Community resources include childcare providers, colleges, libraries, parks, places of worship, K-12 schools, and workforce development centers. To collect this data, we used a variety of public resources, including government agencies and recovery websites. Our collection of community resources is not necessarily exhaustive, but represents the data accessed following the advice of substance use experts and researchers. This data was acquired through a variety of means, including simple downloads, manual data entry, computer reading of PDF files, and scraping websites. See the table below for the community resources data sources.

Table 3. *Community Resource Locator Tool Data Sources (Downloaded Sept 2020-April 2021)*

Resource	Data Source	Website Link
Childcare Providers	Iowa Department of Human Services	http://ccmis.dhs.state.ia.us/ClientPortal/ProviderLocator.aspx
Colleges	Wikipedia list of Iowa colleges	https://en.wikipedia.org/wiki/List_of_colleges_and_universities_in_Iowa
Public Libraries	Institute of Museum and Library Services	https://www.ims.gov/research-evaluation/data-collection/public-libraries-survey
Parks	MyCountyParks.com	https://www.mycountyparks.com/County/Default.aspx
Places of Worship	USGS Geographic Names Information System	https://data.iowa.gov/Physical-Geography/Iowa-Church-Buildings/juvk-dad9
K-12 Schools	Iowa Department of Education	Public Schools: https://educateiowa.gov/documents/directories/2020/09/2020-21-iowa-public-school-building-directory
		Private Schools: https://educateiowa.gov/documents/directories/2020/09/2020-21-iowa-non-public-school-building-directory
Workforce Development Centers	Iowa Workforce Development	https://www.iowaworkforcedevelopment.gov/contact

10.5 Substance Use Vulnerability Index

Data Tool:

Substance Use Vulnerability Index

Data:

Treatment Episode Data Set-Admission and Discharge (TEDS), 2000-2018 National Survey on Drug Use and Health data (NSDUH), 2015-2019 U.S. Census Bureau American Community 5-year Estimates (ACS), 2015-2019

Geographic ‘hot spots’ of people at risk for substance use disorder were first predicted based on models of administrative data from Treatment Episode Data on admissions (TEDS) and the National Survey of Drug Use and Health (NSDUH) data that assessed significant relationships between key substances and socio-demographic characteristics known to affect health equity and substance use vulnerability (Tables 5-6 results below). Then, the significant predictions of risk for each substance were overlaid with Census Bureau’s American Community Survey 5-year estimates of these population characteristics to provide a visual representation of places with especially high concentrations of people with at-risk characteristics. The Census characteristics described in Table 4 below are reported in Figures 5-8

Table 4. *Substance Use Risk Index using U.S. Census Bureau American Community 5-year Estimates (2015-2019)*

Risk Characteristics	Census Table	Description
Age	B06001	Data table includes population by age categories.
Sex	B01001	Data table includes population by sex.
Poverty Status	S1701_C01	Data table includes poverty status by age bracket and for different income levels.
Marital Status	B12001	Data table includes marital status by sex.
Parental Status	B09002	Data table includes parental and childcare status.

Table 5. *Substance Use Risk Index using TEDS Admission Data*

Risk Characteristics	Alcohol	Cannabis	Meth	Cocaine	Other Opiates	Heroin	Benzos
Age	Older, >35	Young, <35, <25	Middle age	>45	<25	Spikes at both ends	<25
Sex	Male	Male	Female			Male	Female
Race	Black, Hispanic	Black	White	Non-white	Asian, white	Non-white	White
Education		No college	No college	Some college	Some college	Some college	Some college
Poverty	Public Assistance	Public Assistance		Retired/Disabled	Wages/Salary, Retired/Disabled	Wages/Salary, Retired/Disabled	
Employment	Employed	Part time	Unemployed	Employed	Unemployed		Part time
Marital Status			Separated, Divorced, Widowed	Single	Married	Single	
Pop Density	Rural, Micro	Rural, Micro	Micro	Metro	Metro	Metro	Metro, Micro

Table 6. *Substance Use Risk Index using NSDUH Data*

Risk Characteristics	Alcohol	Cannabis	Meth	Cocaine	Other Opiates	Heroin	Benzos
Age	26-34	Young, <35, <25	Middle age	18-34	<50	26-49	18-34
Sex	Male	Male	Male	Male	Male	Male	Male
Race	White	White, Native American	White, Native American	White, Native American	White, Native American	White	White
Education	College	Some college, maybe	No college		No college	No college	
Income	>75,000	<20,000	<40,000	<20,000	<40,000	<20,000	
Employment	Employed	Unemployed	Unemployed	Unemployed	Unemployed	Unemployed	Unemployed
Marital Status	Single, separated	Single	Separated, Divorced	Single	Single	Single	Single
Pop Density	Metro	Metro	Non-metro	Metro	Metro	Metro	Metro

10.6 Social Determinants of Health Index

Data: Social Determinants of Health Index

Data: *U.S. Census Bureau American Community 5-year Estimates (ACS), 2015-2019*

The Social Determinants of Health Index was developed to promote health equity through providing a better understanding of the environments that create and ameliorate the multifactorial risk factors of substance misuse on priority populations. All data for the Substance Use Vulnerability Index comes from the U.S. Census Bureau American Community Survey 5-year estimates (2015-2019). The 5-year pooled dataset represents 60 months of data that enable more precise multi-year estimates. Because many of Iowa’s counties have relatively small populations, the 5-year set of pooled data is the only type of ACS estimates that are available to use across all 99 counties. Following the standards set by *Washington State’s Social Determinants of Health Website* (www.doh.wa.gov/DataandStatisticalReports/HealthDataVisualization/SocialDeterminantsofHealthDashboards/CensusTractSocialDeterminantsofHealth), PSC collected information on the educational attainment level, health insurance coverage, English proficiency, unemployment, and poverty status in each county and then used this information to calculate the average health index for each of Iowa’s 99 counties

Table. 7. *Substance Use Risk Index using U.S. Census Bureau American Community 5-year Estimates (2015-2019)*

Risk Characteristics	Census Table	Description
Educational Attainment	S1501	Data table includes educational attainment level for population 25+, by sex.
Health Insurance Coverage	S2701_C05_001	Variable is percent of civilian noninstitutionalized population that is uninsured.
English Proficiency	S1601_C06_001	Variable is percent of population 5+ that speaks English less than very well.
Unemployment, 16+	S2301_C04_001	Variable is percent of population 16+ that is in the labor force, but is unemployed.
Poverty Status	S1701_C01	Data table includes poverty status by age bracket and for different income levels.

The Social Determinants of Health Index was developed to promote health equity through providing a better understanding of the environments that create and ameliorate the multifactorial risk factors of substance misuse on priority populations. All data for the Substance Use Vulnerability Index comes from the U.S. Census Bureau American Community Survey 5-year estimates (2015-2019). The 5-year pooled dataset represents 60 months of data that enable more precise multi-year estimates. Because many of Iowa’s counties have relatively small populations, the 5-year set of pooled data is the only type of ACS estimates that are available to use across all 99 counties. Following the standards set by *Washington State’s Social Determinants of Health Website* (www.doh.wa.gov/DataandStatisticalReports/HealthDataVisualization/SocialDeterminantsofHealthDashboards/CensusTractSocialDeterminantsofHealth), PSC collected information on the educational attainment level, health insurance coverage, English proficiency, unemployment, and poverty status in each county and then used this information to calculate the average health index for each of Iowa’s 99 counties

Appendix 2: Peer Support Contacts in Your Area

Table 8. Appedix 2

Type	Name	Meetings per Week	Meeting Location
AA	Bettendorf Group	27	2204 Grant St, Bettendorf, IA 52722, USA
AA	Big Book Study Group	1	1809 Mississippi Blvd, Bettendorf, IA 52722, USA
AA	W.E T.W.O	1	1401 Central Ave, Bettendorf, IA 52722, USA
AlAnon	Bettendorf AFG	1	2204 Grant St, Bettendorf, IA 52722, USA
CR	Pleasant View Celebrate Recovery	1	6400 Crow Creek Road, Bettendorf, IA 52722

Appendix 3: Recovery Resources in Your Area

Table 9. Bettendorf Recovery Resource Type, Name of Business, and Address of Business

Resource	Name	Address
Drug Drop Off Location	Bettendorf Police Department	1609 State Street, Bettendorf, Iowa 52722
Drug Drop Off Location	Hy-Vee Pharmacy	2900 Devils Glen Rd, Bettendorf, Iowa 52722
Hospital	UnityPoint Health-Trinity Bettendorf	4500 Utica Ridge Rd, Bettendorf, IA 52722
Mental Health Center	New Choices, Inc.	2501 18th Street, Bettendorf, IA
Recovery Housing	The Abbey Addiction Treatment Center	1401 Central Ave, Bettendorf, IA
SUD and Problem Gambling Treatment Location	OWI Program	2485 Tech Drive Bettendorf, 52722
SUD and Problem Gambling Treatment Location	The Abbey, LLC	1401 Central Avenue Bettendorf, 52722

Appendix 4: Community Resources in Your Area

Table 10. Bettendorf Community Resource Type, Name of Business, and Address of Business

Resource	Name	Address
Childcare Provider	Erica Clifton-Saunders and Penny Miller	1420 30th St, Bettendorf, IA 52722
Childcare Provider	Growing With Grace Early Learning Center	2395 Tech Dr Ste 6, Bettendorf, IA 52722
Childcare Provider	Hand In Hand	3860 Middle Rd, Bettendorf, IA 52722
Childcare Provider	Our Savior Lutheran Preschool	3775 Middle Rd, Bettendorf, IA 52722
Childcare Provider	Pamela Kehn	3194 S Hampton Dr, Bettendorf, IA 52722
Childcare Provider	Ready Set Grow Preschool	2400 Middle Rd, Bettendorf, IA 52722
Childcare Provider	Amy Dowell	2131 Bellevue Ave, Bettendorf, IA 52722
Childcare Provider	APK Early Learning Academy Bettendorf	2711 Happy Joe Drive, Bettendorf, IA 52722
Childcare Provider	Hugs Kids Daycare	3211 Maplecrest Rd, Bettendorf, IA 52722
Childcare Provider	Jami Sherman	1828 Sunset Dr, Bettendorf, IA 52722
Childcare Provider	Jana Michaelis	1403 Hillside Dr, Bettendorf, IA 52722
Childcare Provider	Jennifer Abbott	1023 Holmes St, Bettendorf, IA 52722
Childcare Provider	Jessica Gilmore	2914 Camden Dr, Bettendorf, IA 52722
Childcare Provider	Redeemer Preschool	1109 Tanglefoot Lane, Bettendorf, IA 52722
Childcare Provider	Rivermont Collegiate	1821 Sunset Dr, Bettendorf, IA 52722
Childcare Provider	Sara Young	2565 Crow Creek Rd, Bettendorf, IA 52722
Childcare Provider	SCFY Bettendorf Y	3800 Tanglefoot Ln, Bettendorf, IA 52722
Childcare Provider	SCFY Grant Wood Kids Club	1423 Hillside Dr, Bettendorf, IA 52722
Childcare Provider	SCFY Herbert Hoover Kids Club	3223 S Hampton Dr, Bettendorf, IA 52722
Childcare Provider	SCFY Hopewell Kids Club	3900 Hopewell, Bettendorf, IA 52722
Childcare Provider	SCFY Pleasant View Kids Club	6333 Crow Creek Rd, Bettendorf, IA 52722
Childcare Provider	SCFY Riverdale Heights Kids Club	2125 Devils Glenn Rd, Bettendorf, IA 52722
Childcare Provider	SCFY TBK	4850 Competition Dr, Bettendorf, IA 52722
Childcare Provider	SCFY-Paul Norton Kids Club	4485 Greenbrier Dr, Bettendorf, IA 52722
Childcare Provider	Shardae McGowan	5581 Kristi Ln, Bettendorf, IA 52722
Childcare Provider	Sharon Schieberl	4350 Aspen Hills Cir, Bettendorf, IA 52722
Childcare Provider	Barbara Pass	3887 18th St, Bettendorf, IA 52722
Childcare Provider	Brigitte Watson	3021 Sunburst Dr, Bettendorf, IA 52722
Childcare Provider	Joanne Anderson	3907 Utica Ridge Rd, Bettendorf, IA 52722
Childcare Provider	Kathy Mahlstedt	1623 Davenshire Dr, Bettendorf, IA 52722
Childcare Provider	Katie Hill	1320 Medina Ct, Bettendorf, IA 52722
Childcare Provider	St John Vianney Preschool	4097 18th St, Bettendorf, IA 52722
Childcare Provider	Suzanne Kerr and Judy Steffen	1006 Brown St, Bettendorf, IA 52722
Childcare Provider	Suzanne Rice	4105 Kings Ct, Bettendorf, IA 52722
Childcare Provider	Tamarra Home Daycare LLC	2211 Parkway Dr, Bettendorf, IA 52722
Childcare Provider	Carebear Day Care	3602 Wakonda Dr, Bettendorf, IA 52722
Childcare Provider	Cleunia Young	823 Hillside Dr, Bettendorf, IA 52722
Childcare Provider	Cori Barker	1111 16 1/2 St, Bettendorf, IA 52722
Childcare Provider	KinderCare Bettendorf East	2986 Victoria St, Bettendorf, IA 52722
Childcare Provider	Lakesha Roper	1704 Central Ave, Bettendorf, IA 52722
Childcare Provider	Lindsay Asta	5361 Century Heights Ave, Bettendorf, IA 52722
Childcare Provider	Tenea Harris	1002 Hillside Dr, Bettendorf, IA 52722

Childcare Provider	The Bettendorf KinderCare #301113	2330 Tech Dr, Bettendorf, IA 52722
Childcare Provider	The Red Apple Child Care Center	3265 Ridge Point, Bettendorf, IA 52722
Childcare Provider	Daffy's Daycare	617 28th St, Bettendorf, IA 52722
Childcare Provider	Morning Star Academy	1426 Tanglefoot Lane, Bettendorf, IA 52722
Childcare Provider	Liza Wellman	3114 Dundee Ln, Bettendorf, IA 52722
Childcare Provider	Lourdes Little Lancers	1453 Mississippi Blvd, Bettendorf, IA 52722
Childcare Provider	Lynell Terrell	1925 Parkway Drive, Bettendorf, IA 52722
Childcare Provider	Mamie Levi	901 Hillside Dr, Bettendorf, IA 52722
College	Scott Community College	Scott Community College, Bettendorf, IA
Family Support Specialists	Child Health Specialty Clinics (CHSC) - Community Regional Center	865 Lincoln Road Suite 500, Bettendorf, IA
Library	Bettendorf Public Library Information Center	2950 Learning Campus Dr, Bettendorf, IA 52722
Place of Worship	United Methodist Church	1809 Mississippi Blvd, Bettendorf, IA 52722
Place of Worship	Redeemer Lutheran Church	1107 Tanglefoot Ln, Bettendorf, IA 52722
Place of Worship	Saint Peters Episcopal Church	2400 Middle Rd, Bettendorf, IA 52722
Place of Worship	River of Life Church	4855 Forest Grove Dr, Bettendorf, IA 52722
Place of Worship	Community of Joy Church	Bettendorf, IA 52722
Place of Worship	Bettendorf Christian Church	3487 Towne Pointe Dr, Bettendorf, IA 52722
Place of Worship	Harmony Hills Baptist Church	1642 Tanglefoot Ln, Bettendorf, IA 52722
Place of Worship	Our Savior Lutheran Church	3775 Middle Rd, Bettendorf, IA 52722
Place of Worship	Christ Family Reformed Church	4601 Utica Ridge Rd, Davenport, IA 52807
Place of Worship	Saint John Vianney Church	4097 18th St, Bettendorf, IA 52722
Place of Worship	Broadview United Church	1809 Mississippi Blvd, Bettendorf, IA 52722
School (K-12)	Bettendorf High School	3333 18th Street, Bettendorf, IA 52722
School (K-12)	Bettendorf Middle School	2030 Middle Road, Bettendorf, IA 52722
School (K-12)	Grant Wood Elementary School	1423 Hillside Dr, Bettendorf, IA 52722
School (K-12)	Herbert Hoover Elementary School	3223 South Hampton Drive, Bettendorf, IA 52722
School (K-12)	Paul Norton Elementary School	4485 Greenbrier Dr, Bettendorf, IA 52722
School (K-12)	Mark Twain Elementary School	1620 Lincoln Rd, Bettendorf, IA 52722
School (K-12)	Neil Armstrong Elementary School	3311 Central Avenue, Bettendorf, IA 52722
School (K-12)	Pleasant Valley High School	604 Belmont Road, Bettendorf, IA 52722
School (K-12)	Hopewell Elementary	3900 Hopewell Ave, Bettendorf, IA 52722
School (K-12)	Pleasant View Elementary School	6333 Crow Creek Road, Bettendorf, IA 52722
School (K-12)	Riverdale Heights Elem School	2125 Devils Glen Road, Bettendorf, IA 52722
School (K-12)	Morning Star Academy	1426 Tanglefoot Ln, Bettendorf, IA 52722
School (K-12)	Rivermont Collegiate	1821 Sunset Drive, Bettendorf, IA 52722
School (K-12)	Lourdes Catholic School	1453 Mississippi Blvd, Bettendorf, IA 52722